

FTPS SCR Controller Wiring Arrangement

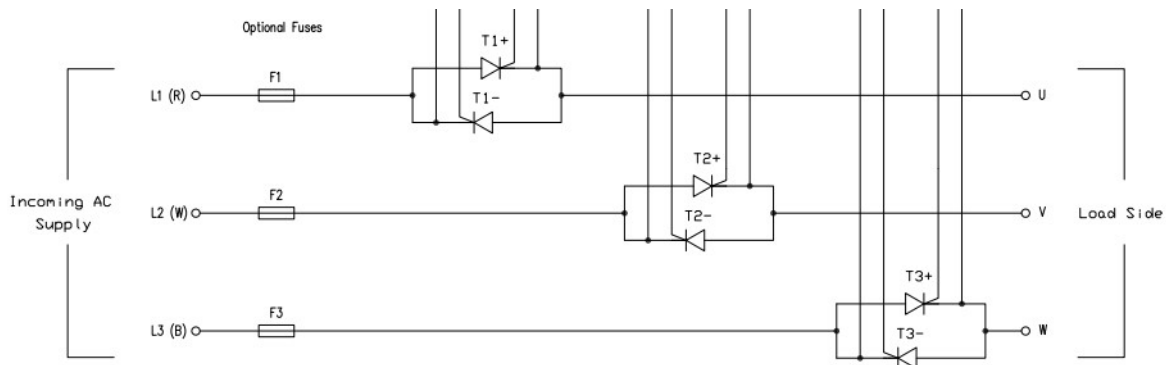
A) Power connections

There are 3 input and 3 output connections for the power side. Note the phase sequence must be correct on both sides for the controller to operate correctly.

Red = L1 -> U

White = L2 -> V

Blue = L3 -> W



B) Control Connections

4-20mA/0-20mA -> Pins 7 and 8 (-)

0-10V/0-5V/2-10V/1-5V -> Pins 7 and 8 (-)

- 1) For POT input, remove link between terminals 6 and 7 and connect POT to 5,6,8
- 2) For 0-10V input (Factory set) there will be no link between terminals 6 and 7
- Control input connects to terminals 7(+) and 8(-). You can scale input to 0-5V,1-5V,2-10V
- 3) 4-20mA/POT input version are the same calibration, once link is removed, control input goes to terminals 7(+) and 8(-) for 4-20mA/0-20mA.
- 4) Pins 1 and 2 require auxiliary power and are also connected to the internal fan

S-S Type terminal connection diagram

