



Distribution Outlets



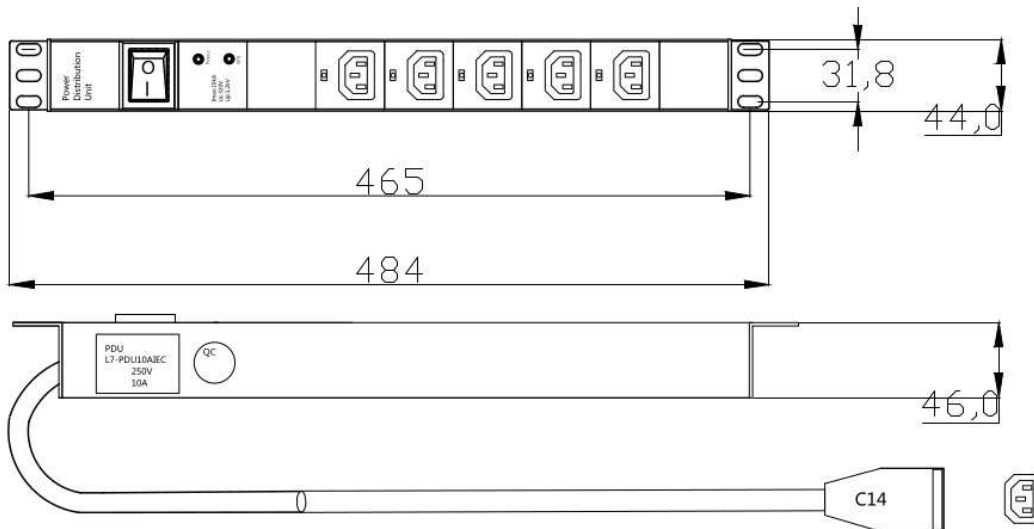
Features:

- C14 Input, Multiple Outlet
- Up to 12 Outlet
- Choice of Type of Outlet
- Red Power Indicator Switch
- Optional Overload Protection
- Optional 2M inlet cable
- Rack Panel Mount

- Ordering Example 1):** DSTO-C14-5F-R-N-N-H = C14 Inlet, 5 x F Outlet, Red Indicator Switch, No Entry Cable, No Overload Protection, Rear Mounting Hooks
- Ordering Example 2):** DSTO-C14-5F-N-2M-O-R = C14 Inlet, 5 x F Outlet, Red Indicator Switch, 1.8 Meter Cable, Overload Protection, Rack Mounted

Outline & Installation Dimensions

Model with 1.8M C14 Extension Cable and rack mountable Wings

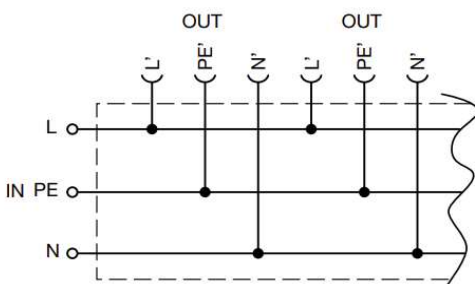


Technical Specifications

Voltage Range	100-240VAC
Maximum Current	10 Amp
Maximum Wattage	2400W
Illumination	RED Standard LED

Internal Wiring

Without Rocker Switch



With Rocker Switch

