



FASTRON

Thermal analysis

For any information, please refer to code

FASTRON_21_23_5

(All declared values and parameters refers to the shown model. All given data and results can be rather different from the testing values, taking into account the real customer's working conditions)

System analysed



Heat sink = aluminium cold plate 195x23/290 (mm) with copper tube $\text{\O}10 \times 0,9$ (mm)

Coolant = water-glycol 70-30%

Inlet coolant temperature = 65 °C

Coolant flow rate = 20 L/min

Total thermal power = 8400 W

Results

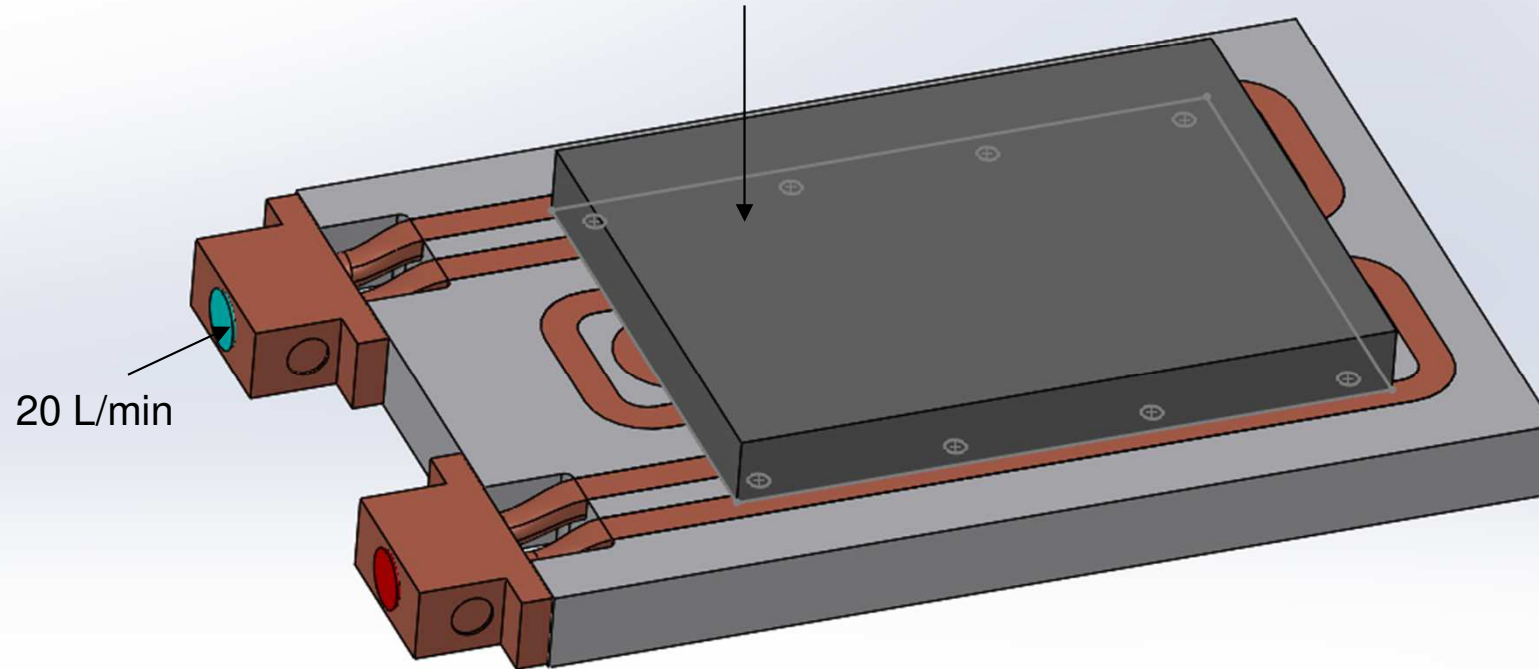
Maximum temperature on the cold plate = 112 °C

Outlet coolant temperature = 71,5 °C

Pressure drop = 0,42 bar (connectors excluded)

3D model

8400 W (uniformly
distributed on the IGBT
base 140x190)



Temperature on the IGBT side

