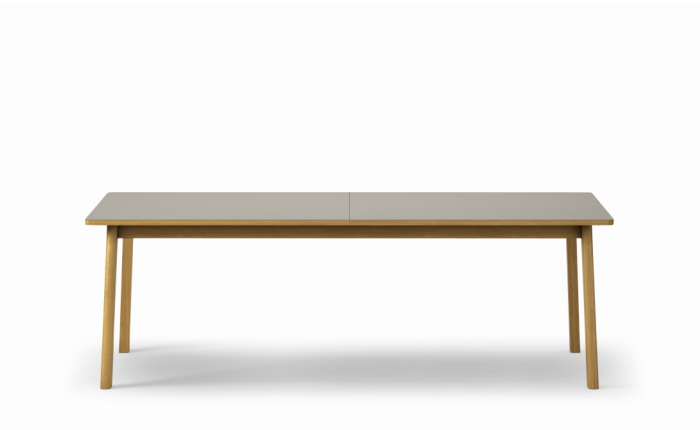


Ana Table

Designed By Arde, 2018

The Ana Table is a dining table with a solid wood frame and an extendable table top. Underneath is a butterfly folding system, providing a discrete place to store the leaves of the table when not in use. Conceived with agility in mind, the easy-to-use extension mechanism makes the Ana Table an enduring design that allows for up to 12 guests. The choice of table tops includes nanolaminate versions in a variety of colours, each with a different type of oak edge as an accent.



MODEL
6490 - Extension Table 220/320 cm

MATERIALS
Table with legs of solid wood. Table top of laminated chipboard with solid wood edges, and topped with Fenix NTM laminate. Integrated butterfly extension mechanism automatically hides the extension leaves under the table top when not in use. Knock-down, delivered unassembled.

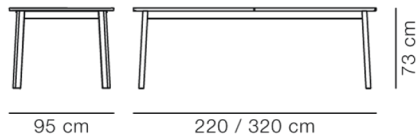
COUNTRY OF ORIGIN
DK

TEST & CERTIFICATES
EN 15372:2016 (L1)

ESSENTIAL ASSORTMENT

SURFACE	FRAME
Laminate Fenix NTM White, edge oak soap	Oak soap
Laminate Fenix NTM Black, smoked oak oil stained	Smoked oak oil stained

DIMENSIONS



Weight: 75 kg

PACKAGING INFORMATION

L: 228 cm, W: 103 cm, H: 14 cm,

Cbm: 0.3m³ (1 Pcs.)

80.6 kg

CARE & MAINTENANCE

Our Care & Maintenance offers guidance for best maintenance of our furniture. It includes advice and instructions on cleaning and caring for specific materials to ensure a long life of your furniture. Find your product on our product site and navigate to the Product Care menu:

[Link to Cleaning & Maintenance](#)

SUSTAINABILITY

Fredericia's furniture is intended to be passed on from generation to generation. The core values of good design are rooted in the sense of responsibility and use of natural materials, ethical methods of production and respect for the people using our furniture every day.

Transparency, sustainability, and circularity are essential, and with a growing number of certifications and ambitious initiatives, Fredericia takes pride in continuously improving its performance while facilitating sustainable customer choices. Download our Sustainability report, Fredericia for People & Planet, here:

[Fredericia for People & Planet](#)

WARRANTY

Fredericia Furniture A/S offers a 7-year guarantee against manufacturing defects in standard products (materials and construction). The warranty does not cover wear and damage to covers, surface treatment, inappropriate use and the like.

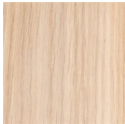
For further information regarding our guarantee, please visit [Fredericia.com](#).

DOWNLOADS

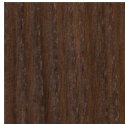
Download images, architect files at our partner portal on [www.fredericia.com](#)

SURFACES & COLOURS

FRAME

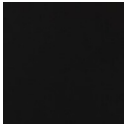


OAK SOAP

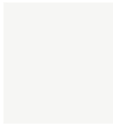


SMOKED OAK
OIL STAINED

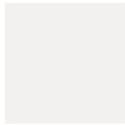
TABLE TOPS



BLACK NANO
LAMINATE



LAMINATE
FENIX NTM
WHITE, EGDE



WHITE NANO
LAMINATE

WOOD



OAK OIL
TREATED