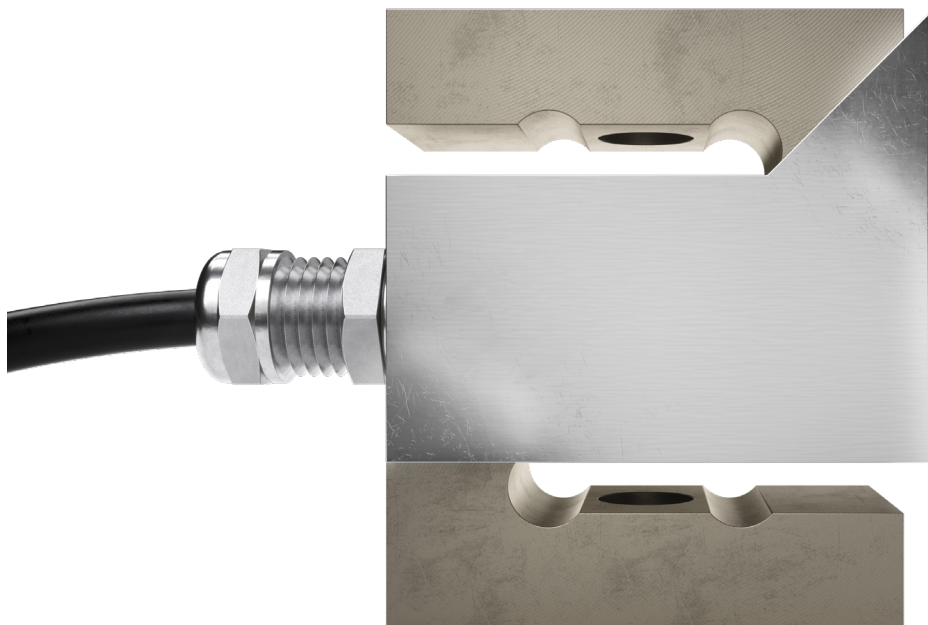


UXT tension load cell



product description

The UXT tension load cell offers a wide range of capacities, extending from 50kg to 7,500kg. Constructed from alloy steel with an electroless nickel-plated surface, it's a robust and reliable choice and an economical alternative to our popular ULB tension load cell.

applications

Suspended tanks and hoppers, crane scale. Suitable for general applications in the process weighing and process automation and control sectors.

approvals

OIML approval to C3 (Y=10,000).

Optional Y=24,000 available for 50-250kg models

NTEP approval to 5,000 intervals, Class III & 10,000 intervals, Class IIIL

ATEX hazardous area approval for zones 0, 1, 2, 20, 21 and 22 (pending)

FM hazardous area approval (pending)

key features

A wide range of capacities from 50kg to 7,500kg

Electroless nickel-plated alloy steel body with protective cover

Environmentally sealed by potting to IP67

Tension and compression loading (bi-directional)

Available in metric and imperial thread form

accessories

Compatible range of hardware

Compatible range of electronics



RoHS
compliant

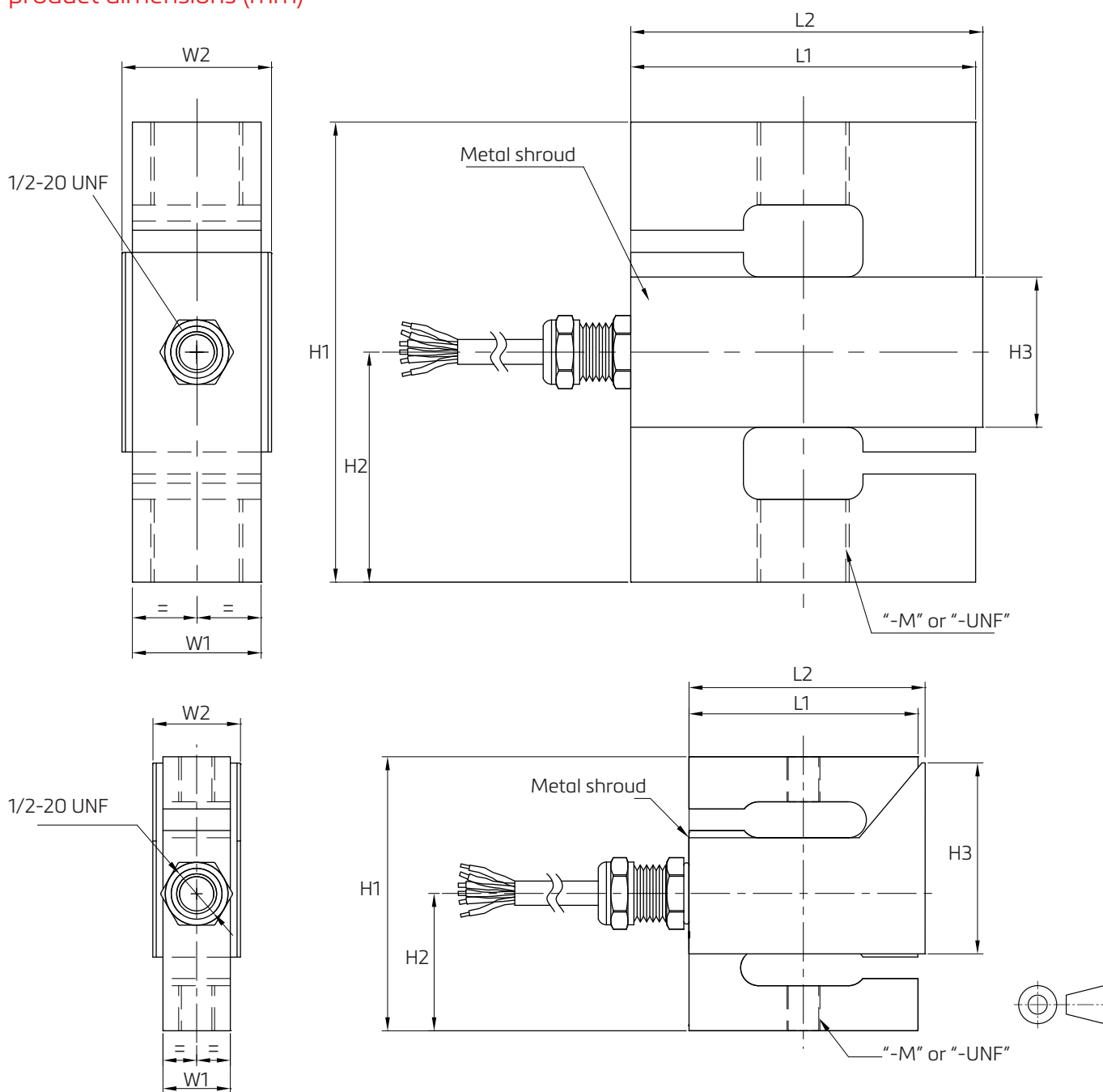


specifications

Maximum capacity (E_{\max})	kg	50/100/250/500/1,000/2,000/5,000/7,500	
Rated Output (RO)	mV/V	$3 \pm 0.25\%$	
Calibration in mV/V/W (A...I classified)	%RO	≤ 0.05 (≤ 0.005)	
Accuracy class according to OIML R60	-	GP	C3
Maximum number of verification intervals (n_{\max})	-	n/a	3,000
Minimum load cell verification interval (v_{\min})	-	n/a	$E_{\max}/10,000$ (Optional $E_{\max}/24,000$ for 50-250kg models)
Non-linearity	%RO	± 0.0400	± 0.0200
Hysteresis	%RO	± 0.0400	± 0.0200
Combined error	%RO	± 0.0400	± 0.0200
Creep error (30 mins)	%RO	± 0.0600	± 0.0166
Temperature effect on minimum dead-load output (TC_0)	%RO/10°C	± 0.0400	± 0.0116
Temperature effect on sensitivity (TC_{RO})	%RO/10°C	± 0.0200	± 0.0100
Excitation voltage	V	5...15	
Zero balance	%RO	± 5	
Input resistance	Ω	400 \pm 50	
Output resistance	Ω	350 \pm 2	
Insulation resistance	M Ω	$\geq 5,000$	
Compensated temperature range	°C	-10...+40	
Operating temperature range	°C	-20...+65	
Safe load limit	% E_{\max}	150	
Ultimate load	% E_{\max}	300	
Load cell material	-	Alloy steel (AISI 4140)	
Sealing	-	Potted	
Protection according to DIN 40.050	-	IP67	
Cable length and type	-	6m, 6 cond. 26AWG black jacket polyurethane cable	

The limits for Non-Linearity, Hysteresis, and TC_{RO} are typical values. The sum of Non-linearity, Hysteresis and TC_{RO} meets the requirements according to OIML R60 with $p_{LC}=0.7$

product dimensions (mm)



Capacity (kg)	H1	H2	W1	L1	W2	L2	H3	-M	-UNF
50, 100	61	30.5	15	51	19.52	53.35	43.2	M8x1.25	3/8-24
250, 500	61	30.5	21	51	25.52	53.35	43.5	M12x1.75	1/2-20
1,000	61	30.5	28	51	32.52	53.35	27.6	M12x1.75	1/2-20
2,000	100	50	28	75	32.52	77.76	32.4	M20x1.5	3/4-16
5,000	100	50	34	75	38.52	77.76	36.0	M20x1.5	3/4-16
7,500	140	70	40	87	44.52	89.76	37.56	M24x2.0	1-14

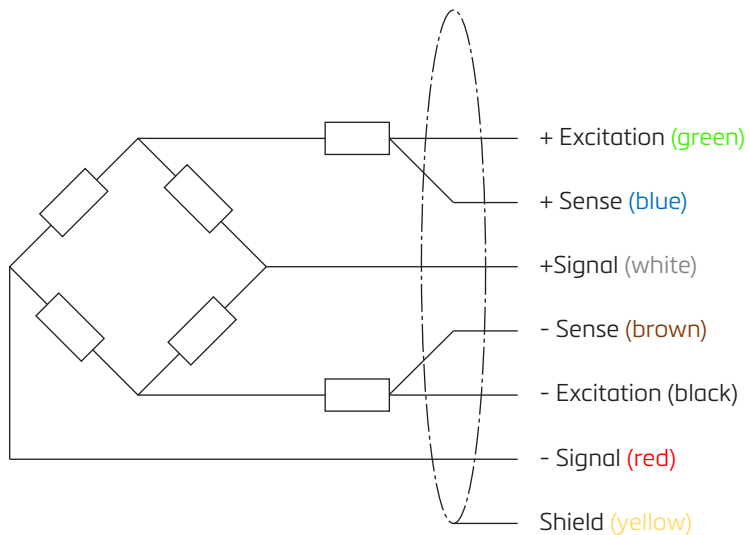
wiring

The load cell is provided with a black 26AWG 6-conductor cable

Standard cable jacket: Polyurethane

Standard cable length: 6m

The shield is floating



Performance, dimensions and wiring specifications based on DWG 0080497. Tolerances to ISO 2768-m. Specifications and dimensions are subject to change without notice.