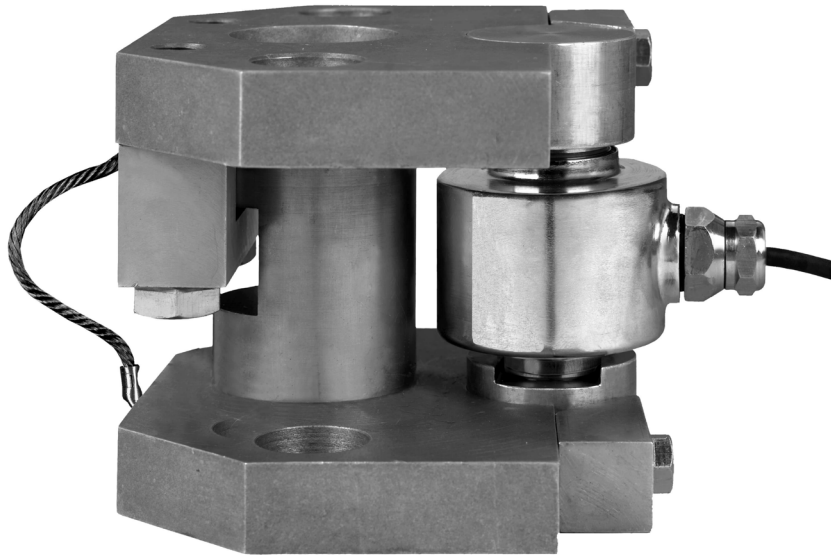


55-01-10 weigh module



product description

Flintec load cell supports are designed to prevent unwanted forces from affecting load cell performance.

The type 55-01-10 is a self-aligning weigh module, with excellent load introduction. The module is especially designed for using Flintec rocker column load cells in hopper and tank weighing applications. The module incorporates an integrated bumper stop eliminating the need for check links thereby offering highest possible precision. The Weigh Module will be shipped pre-assembled; ready for installation by bolting or welding.

applications

Hopper and tank weighing systems.

key features

All stainless-steel construction

Capacities 7.5t, 15t and 22.5t

Self-aligning

Very easy to install

Very rugged

Especially designed for hopper and tank weighing

Integrated bumper-stop for highest accuracy

Integrated lift-off protection

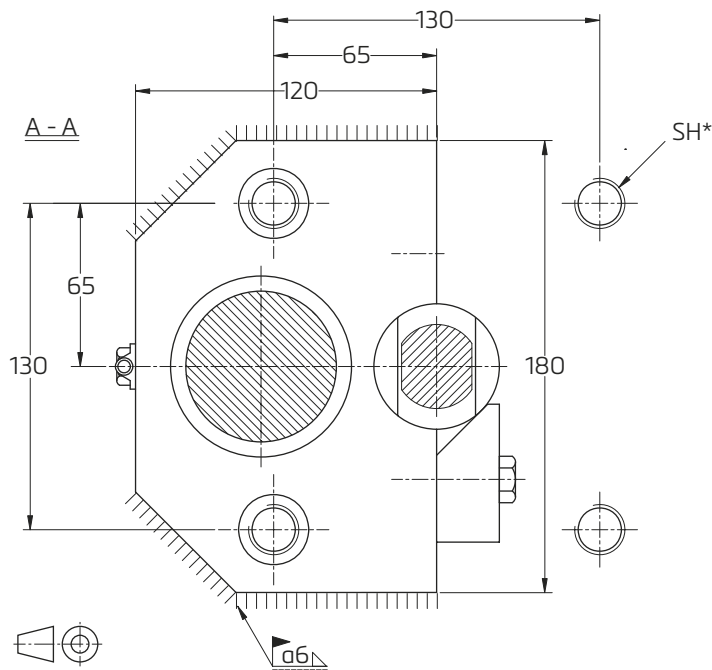
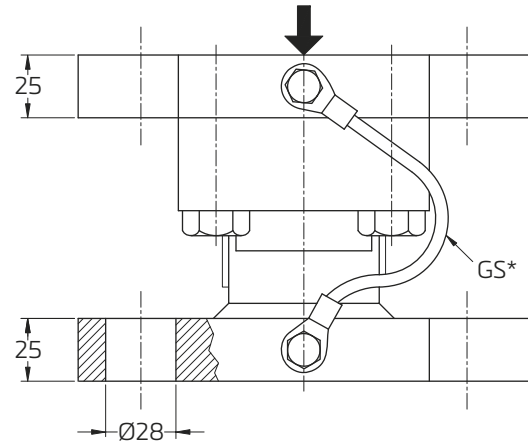
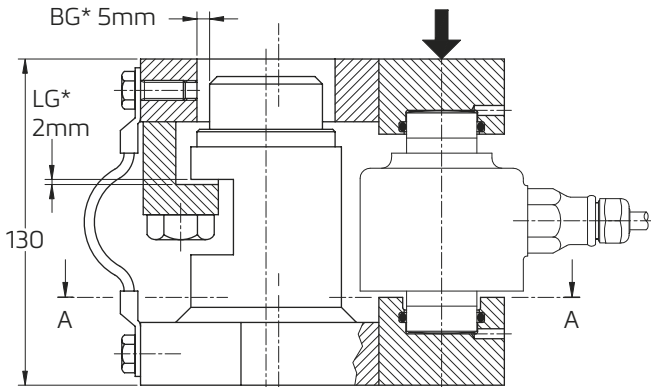
Load cell replacement requires minimum lifting height

W&M certified

RoHS
compliant

 **flintec**

product dimensions (mm)



BG* - bumper gap 5mm

GS* - ground strap

SH* - Symmetrical hole picture with 4 holes allows orientation at installation in 90° steps.

M20 mounting screws (4x) to be used in combination with washer 21x37x3. Screws to be torqued 400Nm.

Tank foot and foundation plate to be horizontal:

-within 0.4/100 for legal for trade applications

-within 0.8/100 for general applications

Maximum force on bumper: 75kN

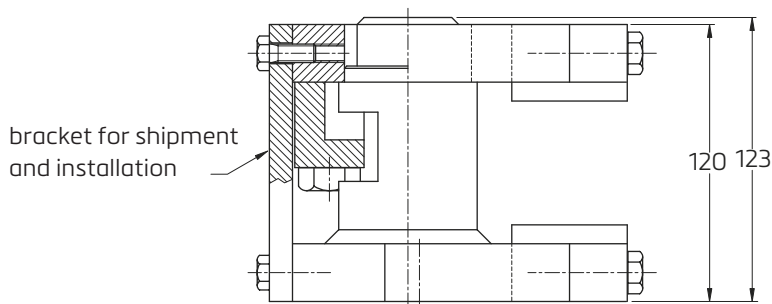
Maximum force on lift off protection: 75kN

Module weight excluding load cell: 11kg

REMARK: Welding instead of bolting is a very practical alternative eliminating problems of getting holes on top and bottom lined up. (Weld as shown)

CAD files for customer's own application drawings are available for download from the Flintec homepage.

module assembled for shipment and installation



Dimensions and specifications are subject to change without notice.