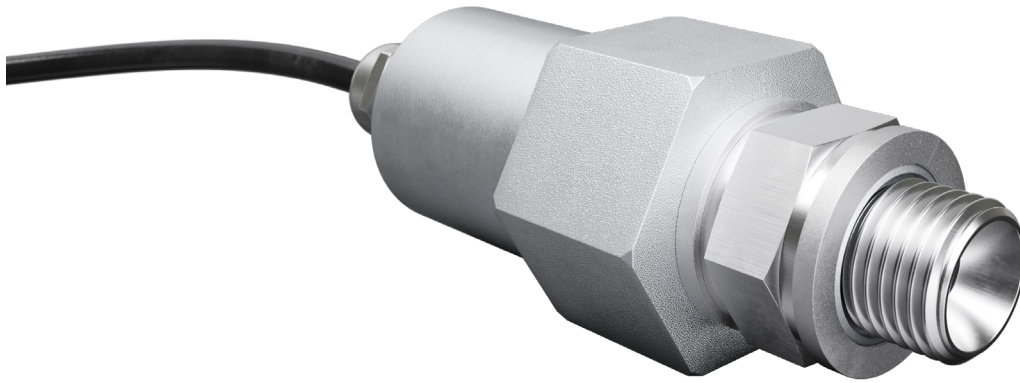


J25 pressure sensor



product description

The J25 pressure sensor offers a reliable and economical way to monitor gas or fluid pressures. By utilising bonded strain-gauge technology and unique manufacturing techniques, it delivers a low-cost, high-quality solution, ideal for both OEM and retrofit applications.

The J25 is a compact and rugged sensor designed to be environmentally resilient. Manufactured entirely from stainless steel and fully welded, it meets the needs of even the most demanding industrial applications. Available in three versions; 20, 150 and 250 bar.

Applications include the continuous monitoring of air pressure on vehicle suspension systems, lifting cylinders used on fork-lift trucks, wheeled loaders, and numerous other agricultural-industrial vehicles and machinery.

applications

20 bar - for rigid vehicle, trailer and tractor air suspensions

150 bar - for lifting cylinders on tipper trucks and agricultural machines

250 bar - for lifting cylinders on forklift trucks, wheeled loaders and excavators

key features

Three pressure sensor ratings; 20, 150 and 250 bar

17-4 stainless steel construction

Hermetically sealed to IP68

Combined error of +/- 0.25% (150 & 250 bar) and +/- 1% (20 bar)

Safe overload 150%. Ultimate overload 300%

Female thread ¼ inch BSP

Male-to-male ¼ inch BSP adaptor fitted as standard

Doughty (MB45-222 VIT FPM) sealing washer included



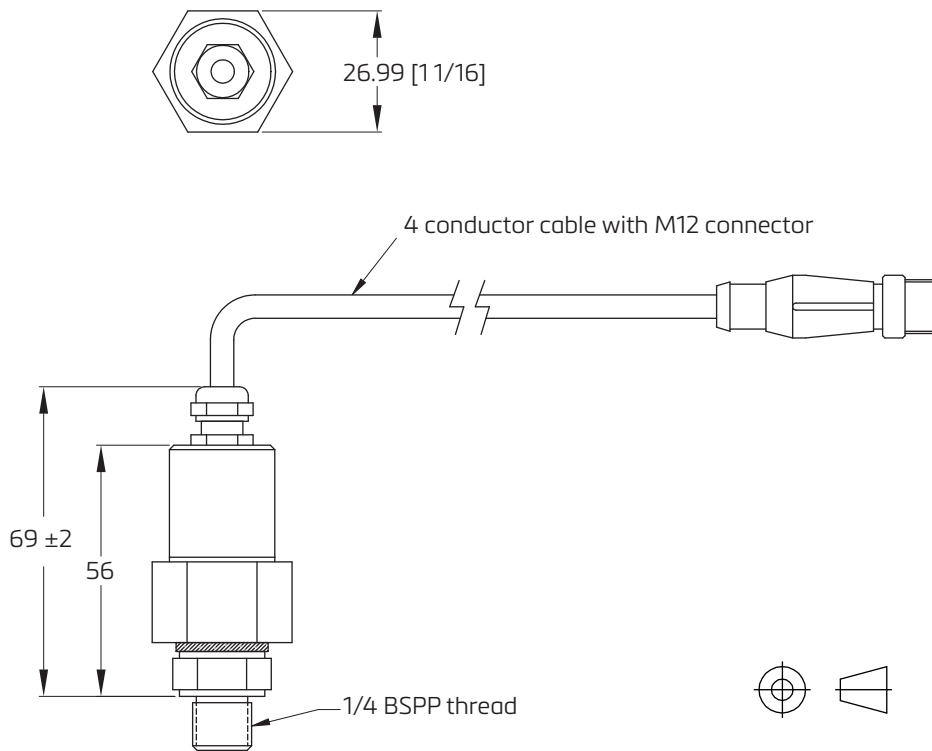
RoHS
compliant



specifications

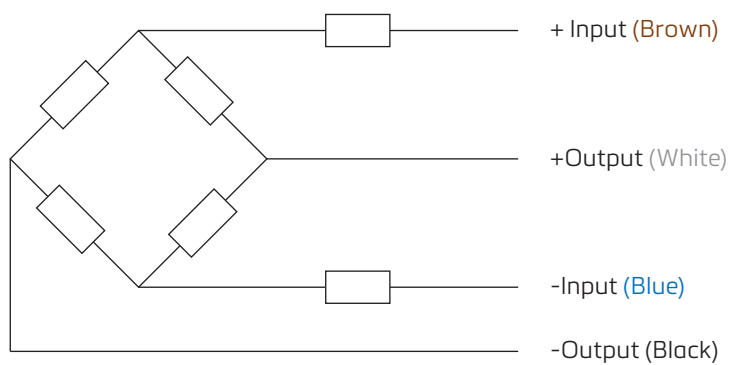
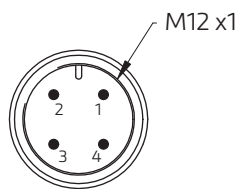
Maximum capacity (E_{max})	bar	20	150	250
Rated Output (RO)	mV/V	2 ±0.2		
Combined Error	%RO	±1	±0.25	
Temperature effect on min dead load output	%RO/ °C	±0.003		
Excitation Voltage	V	5..15		
Zero Balance	mV/V	±0.04		
Input Resistance	Ω	375 ±10		
Output Resistance	Ω	280 - 360		
Insulation Resistance (100V DC)	M Ω	>5,000		
Operating Temperature Range	°C	-20...+125		
Compensated Temperature Range	°C	25...+80		
Safe Load Limit (E_{lim})	% E_{max}	150		
Ultimate Load	% E_{max}	300		
Transducer Material	-	Stainless Steel 15-5ph		
Protection according to EN 60529	-	IP68		
Cable	-	4-conductor cable with M12 connector		
Cable length	m	2		
Mounting Torque	Nm	25		
Source technical document	-	DWG No. 0090581		

product dimensions (mm)



wiring

Connector pin	Colour
1	Brown
2	White
3	Blue
4	Black



Specifications and dimensions are subject to change without notice.