

---

# load mounts for SB8 load cell



## product description

The SB8 load mount provides durable and yet precise load introduction for the SB8 family of bending beam load cells. Consisting of natural rubber with steel plates the mount is an economic, highly engineered solution. Available with either a threaded or cone interface to the load cell.

## applications

Industrial platform scales, low capacity vessel weighing systems.

## key features

Durable rubber and metal plate construction

---

Ensure high accuracy measurement results

---

## options

Threaded 'type C' load mount for  
10kg-500kg capacities

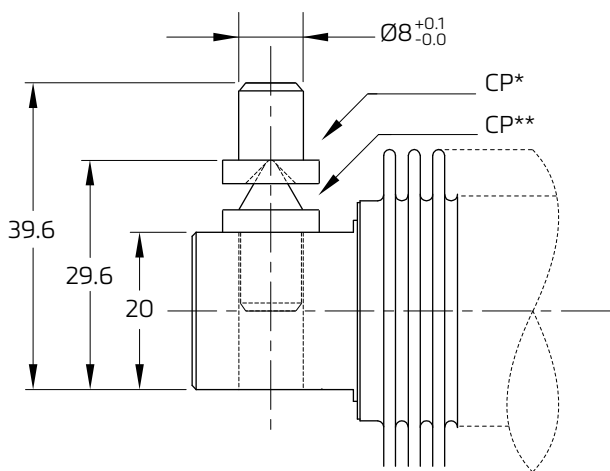
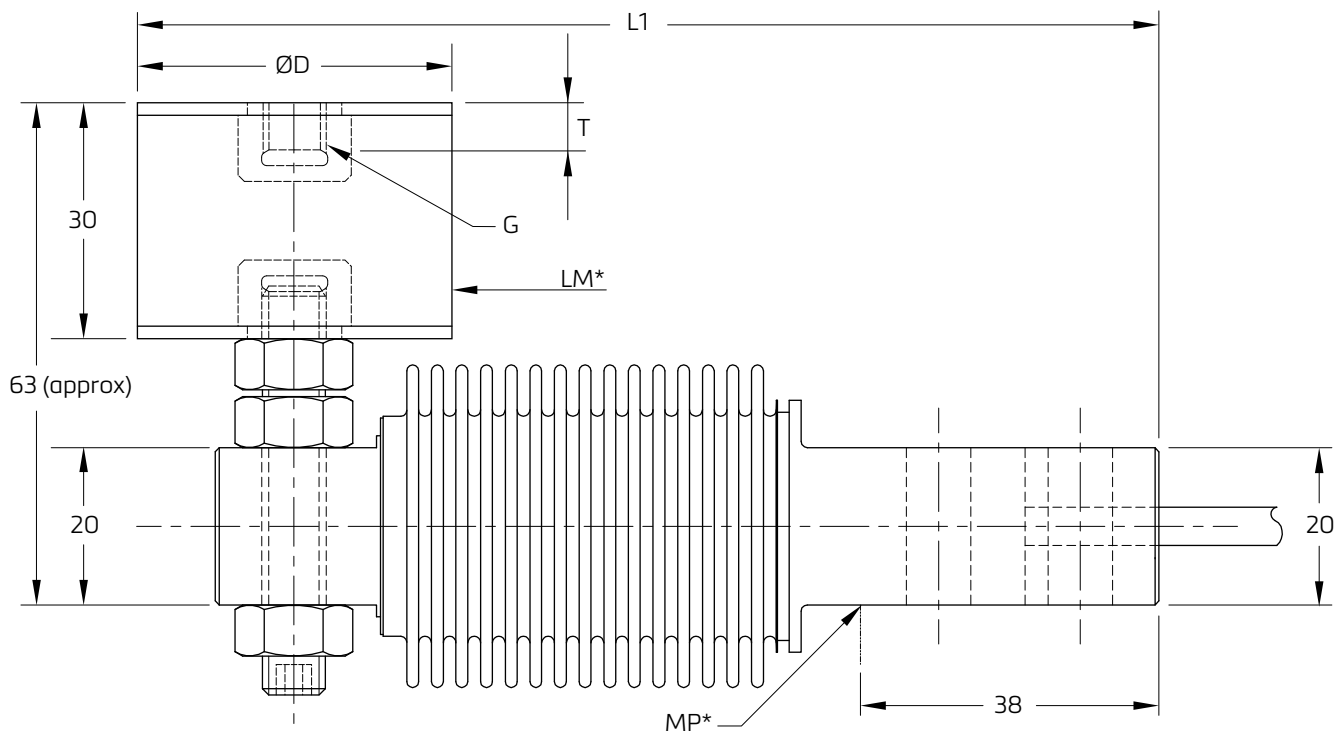
---

Conical interface load mount for  
10kg-250kg capacities

---



product dimensions (mm)



Capacity	$\varnothing D$	L1	G	T
10...250 kg	40	130	M8	8
500 kg	60	140	M10	10

LM\* - Load mount type C  
 MP\* - Edge of mounting plate  
 CP\* - Conical pan 90°  
 CP\*\* - Conical point 60°

Specifications and dimensions are subject to change without notice.