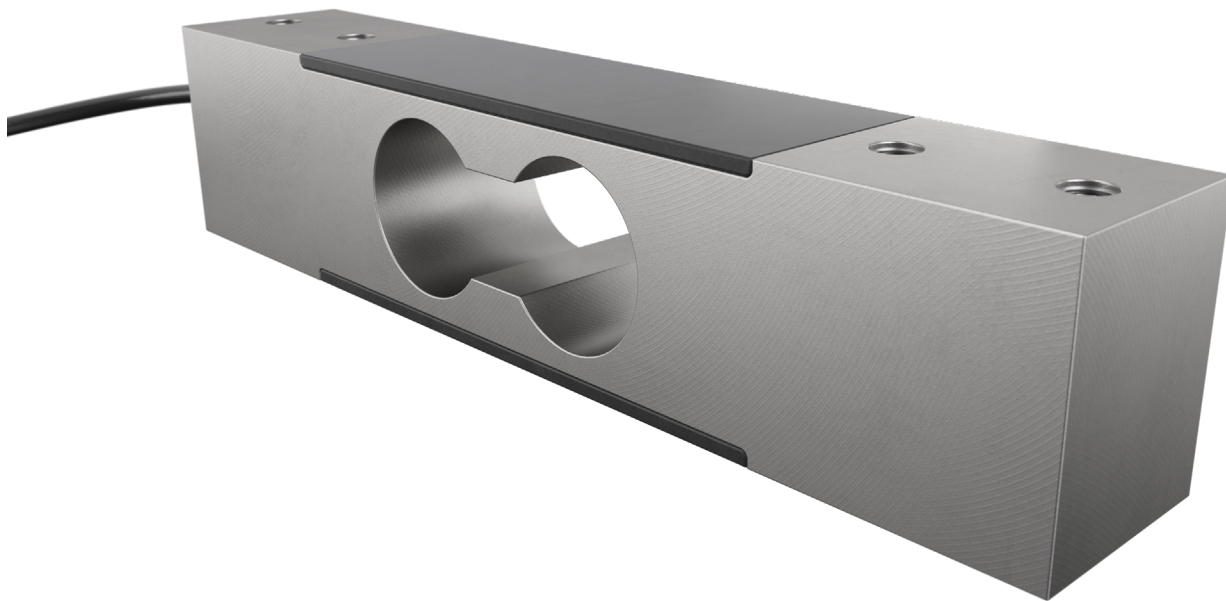


PC3 single point load cell



product description

The PC3 is a high-accuracy, single-point load cell ideal for a wide variety of weighing tasks. The PC3 is constructed from stainless steel and is environmentally protected with durable potting material. Capacities ranging from 7kg through to 150kg and certification from OIML and NTEP for use in trade-approved applications.

The PC3 is similar to both the PC1 and PC30, offering alternative mounting hole pattern.

applications

Bench scales, packaging and grading machines, bag filling equipment, bottle filling machinery.

approvals

OIML approval to C3 (Y=10,000 optional 15,000)

NTEP approval to 5,000, Single Cell, Class III & 10,000, Single Cell, Class III

ATEX

key features

Stainless steel construction

Wide range of capacities from 7kg through to 150kg

High accuracy

Environmentally sealed by potting to IP67

For platform sizes of up to 350x350 (7...3kg) & 450x450 (60...15kg)

accessories

Compatible range of hardware

Compatible range of electronics



RoHS
compliant



UK
CA

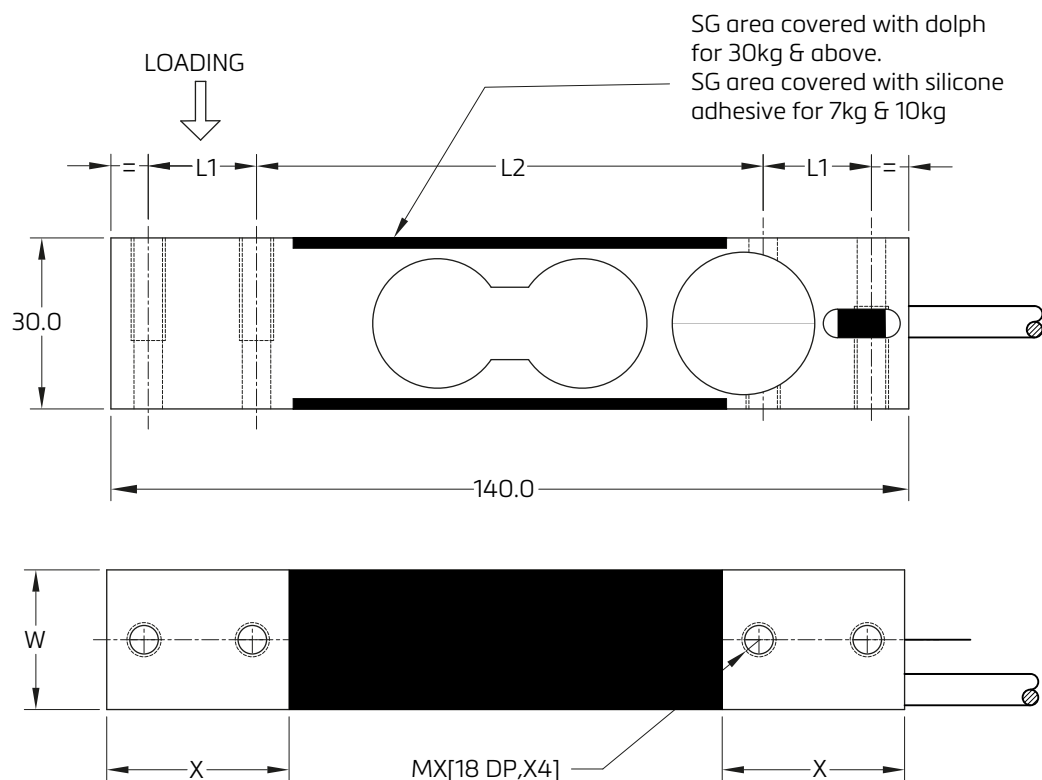


 **flintec**

specifications

| | | | |
|---|---------------|---|---------------------|
| Maximum capacity (E_{\max}) | kg | 7/10/30/60/100/150 | |
| Accuracy class according to OIML R60 | - | (GP) | C3 |
| Maximum number of verification intervals (n_{\max}) | - | n.a. | 3,000 |
| Minimum load cell verification interval (v_{\min}) | - | n.a. | $E_{\max} / 10,000$ |
| Temperature effect on minimum dead load output (TC_0) | %*RO/10°C | ± 0.040 | ± 0.0140 |
| Temperature effect on sensitivity (TC_{RO}) | %*RO/10°C | ± 0.020 | ± 0.010 |
| Combined error | %*RO | ± 0.040 | ± 0.020 |
| Creep error (30 minutes) / DR | %*RO | ± 0.060 | ± 0.016 |
| Optional: Min, load cell verification interval (min opt) | - | n.a. | $E_{\max} / 15,000$ |
| Optional: Temp, effect on min. dead load output (TC_0 opt) | %*RO/10°C | n.a. | ± 0.0093 |
| Rated Output (RO) | mV/V | $2 \pm 10\%$ | |
| Zero balance | %*RO | 0 ± 5 | |
| Excitation voltage | V | 5...15 | |
| Input resistance (R_{LC}) | Ω | 385 ± 15 | |
| Output resistance (R_{out}) | Ω | 350 ± 10 | |
| Insulation resistance (100 V DC) | M Ω | $\geq 5,000$ | |
| Safe load limit (E_{lim}) | %* E_{\max} | 200 | |
| Ultimate load | %* E_{\max} | 300 | |
| Safe side load | %* E_{\max} | 100 | |
| Max platform size load according to OIML | mm | 350x350 for 7...30kg / 450x450 for 60...150kg | |
| Compensated temperature range | °C | -10...+40 | |
| Operating temperature range | °C | -20...+70 | |
| Load cell material | - | Stainless steel 17-4 PH | |
| Sealing | - | Potted | |
| Protection according to DIN 40.050 | - | IP67 | |

product dimensions (mm)

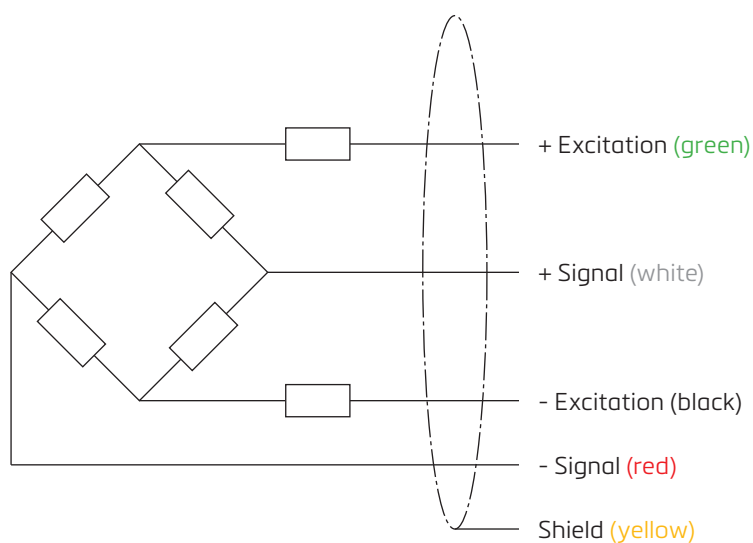


| Capacity (kg) | W | L1 | L2 | X | MX |
|---------------|------|------|------|----|---------|
| 7 - 30 | 18.2 | 19 | 88.9 | 32 | M6x1 |
| 60 | 24.5 | 19 | 88.9 | 32 | M6x1 |
| 100 - 150 | 30.8 | 22.4 | 79.3 | 38 | M10x1.5 |

wiring

24AWG 4 CCOND FOIL SHIELDED TPR

Cable length: 3m



Specifications and dimensions are subject to change without notice.