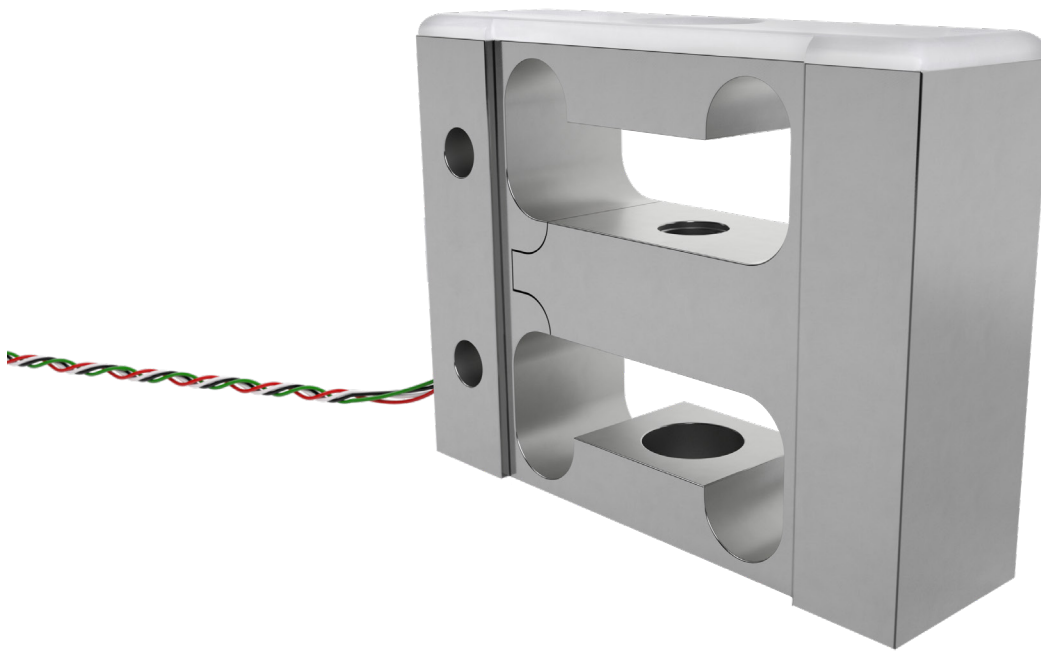


PD3 parallelogram load cell



product description

The PD3 is a high-performance load cell capable of 0.05% non-linearity in capacities from 2.2 pounds up to 100 pounds in both tension and compression.

The internal overload stops provide protection up to 1000% of the rated capacity which is especially important with lower capacity designs. With a length of 1.75" and a height of 1.27", the compact size PD3 makes it an ideal choice in applications where space is limited.

The PD3 is also available in 2 different design alternatives that offer varying load introduction techniques. The standard design includes a threaded hole in the center beam while the optional "saddle" design provides some additional flexibility in terms of mounting.

The standard PD3 provides an environmental seal consistent with an IP65 rating. It also includes flying leads but can be fitted with a variety of user preferred connectors suitable for your application.

applications

Force testing machines across a wide variety of applications.

key features

Capacity range from 2.2lb to 100lb

Overload protection

Built from high-grade aluminium

Environmental protection to IP65

Accurate and compact

options + accessories

Range of cable lengths

Flying leads or cable connectors

A comprehensive range of electronic modules and accessories available

Optional saddle mounted adapter



RoHS
compliant



specifications

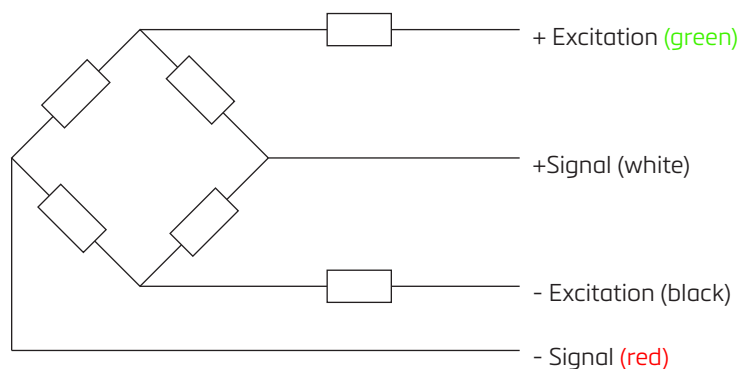
Maximum Capacity (E _{max})	lb	2.2	5	10	25	50	100
Maximum Capacity (E _{max})	N	9.8	22.2	44.5	111	222	445
Rated Output (RO)	mV/V	2.0					
Rated Output Tolerance	% RO	±10					
Non-linearity	% RO	<±0.05					
Hysteresis	% RO	<±0.05					
Zero Balance	% RO	<±2					
Temperature effect on Zero Balance	%RO/ F	<±0.005					
Temperature effect on Sensitivity	%RO/ F	<±0.005					
Creep (30 Minutes)	% RO	<±0.05					
Nonrepeatability	% RO	<±0.01					
Excitation Voltage	VAC/VDC	5...15					
Input Resistance	Ω	1,000 NOM					
Output Resistance	Ω	1,000 NOM					
Insulation Resistance	@ 50VDC	>10G Ω					
Compensated Temperature Range	°F	60...160					
Operating Temperature Range	°F	0...160					
Overload Engagement	%RO	>120					
Maximum Safe Overload	lbs	50	50	100	100	200	250
Load Cell Material (2.2...100lb)	-	Aluminum					
IP Rating	-	65					

tolerances (in)

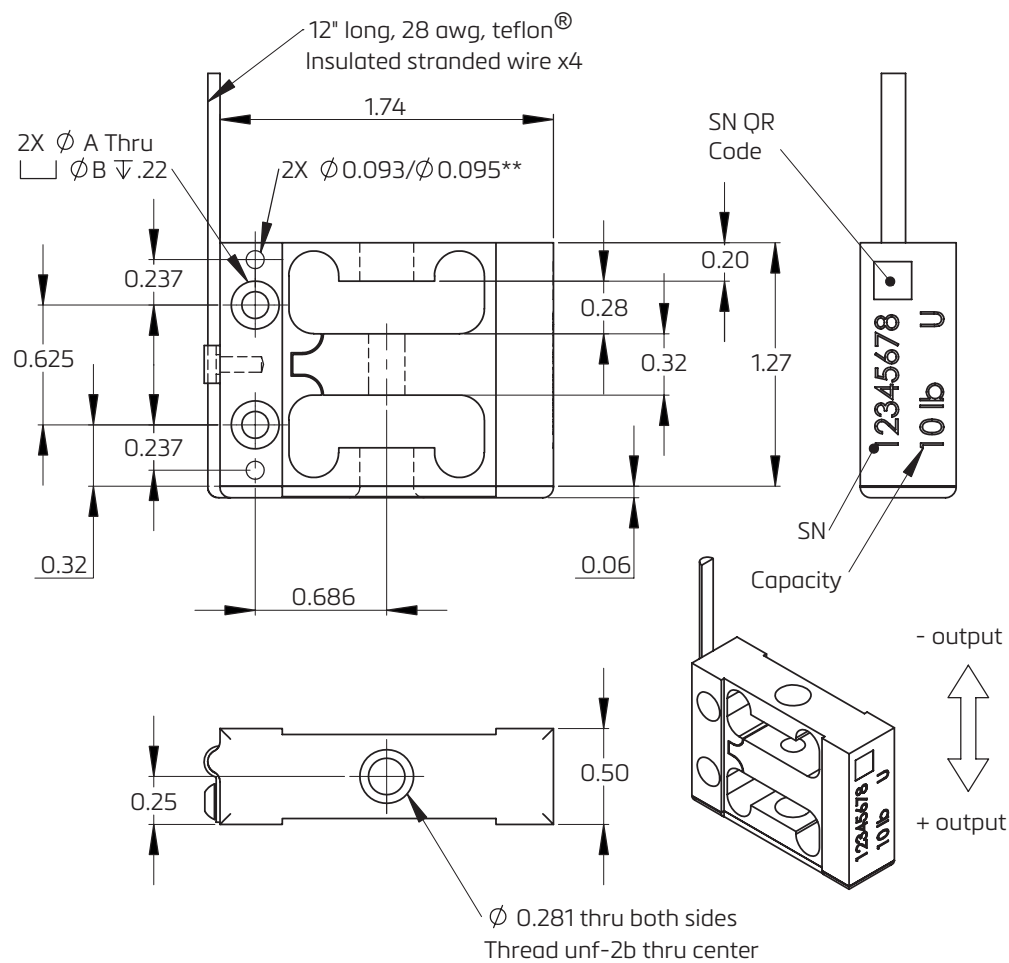
X.XX - ±0.010

X.XXX - ±0.005

(Unless otherwise stated)



product dimensions (in)



Capacity (lb)	Capacity (N)	Thread	A	B	Safe overload (lb)
2.2	9.8	#10-32	0.14	0.25	50
5	22.2				50
10	44.5				100
25	111				100
50	222				200
100	445				250
* Pins required in diam. 0.094 holes					

Specifications and dimensions are subject to change without notice.