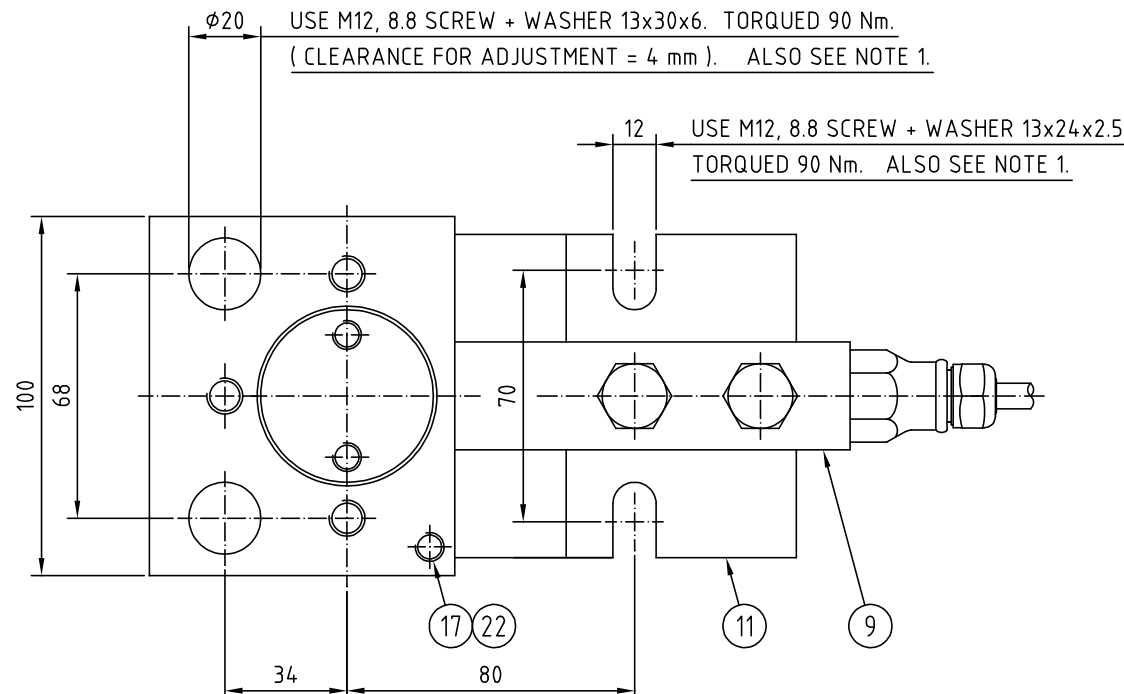
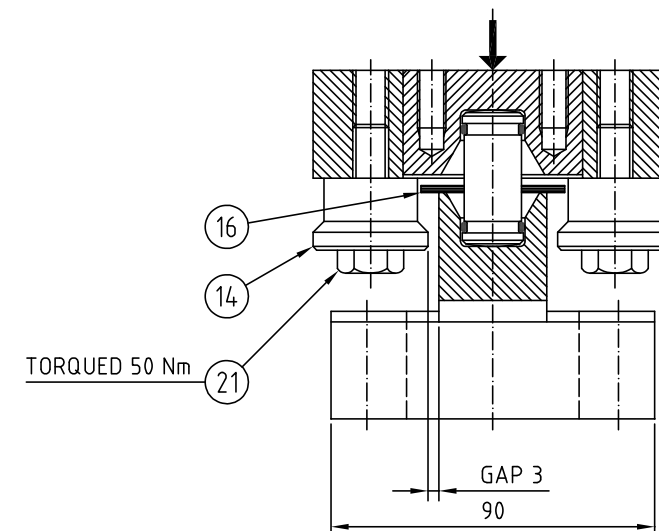
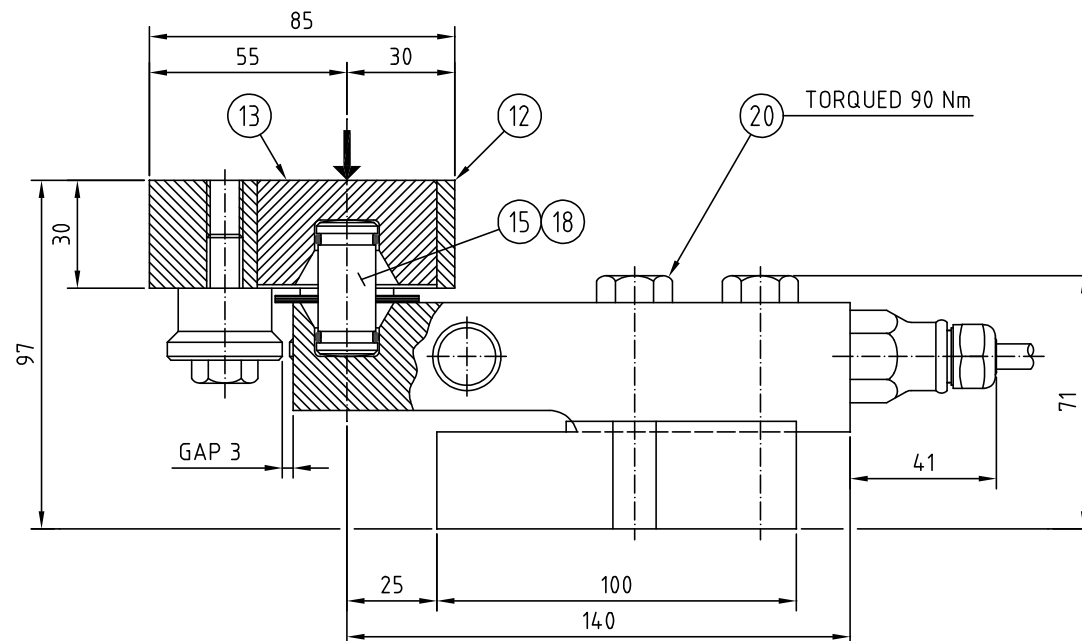
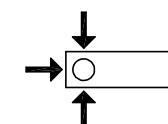


Rev	Date	Sign/Appro	Description
1	03/01/01	N.A	Item 17 and 22 added



#### NOTE:

1. AS AN ALTERNATIVE TO BOLTING, THE MODULES CAN BE WELDED TO LOAD CARRIER AND SUPPORTING STRUCTURE.
2. SAFE VERTICAL LOAD: 40 kN  
SAFE SIDE FORCE: 15 kN
3. PART NUMBERS REFER TO PARTS LIST 4-7609-A.



DRAWING SYMBOL

3-DIRECTIONAL  
BUMPER MODULE

Qty	Group	Item	Description	Material/Drg No	Remarks
D	C	B	A	N.A	N.A
			020321	1:1	
WEIGH MODULE TYPE 52-XX, WITH SB4-20 kN AND BASE PLATE TYPE 52-13 ASSEMBLY / OUTLINE DRAWING					Tolerances, un- less otherwise specified, acc. to ISO 2768 medium. Hole tol. acc. to ISO tol. H12.
					Drawing No. <b>2-7610</b> Sheet
					Rev. No. <b>1</b>