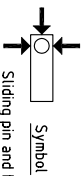
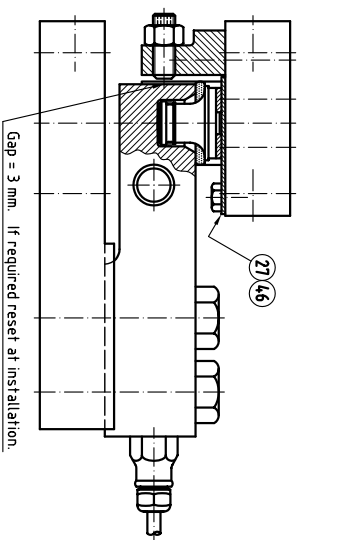


TYPE 52-18SS-A

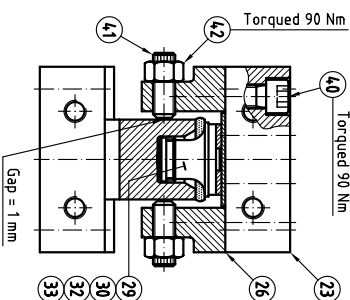


Parts list, zinc plated: 4-9024-A
Parts list, stainless: 4-9025-A

Sliding pin and bumpers
One, two or three bumpers

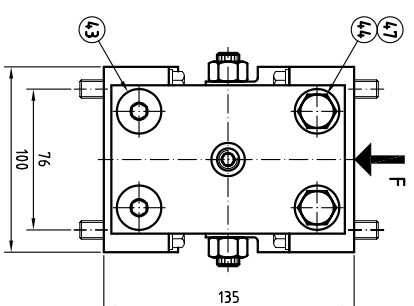
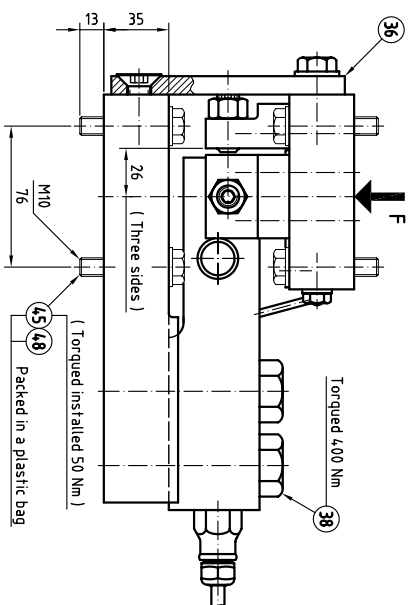


Final bumping gap will be set at installation

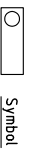


(TYPE 52-18SS-A)

Sections and additional details to the left

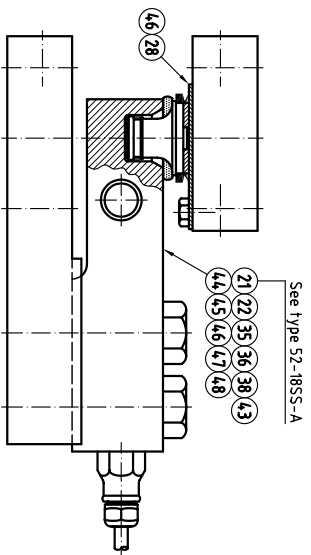


TYPE 52-18SS-B

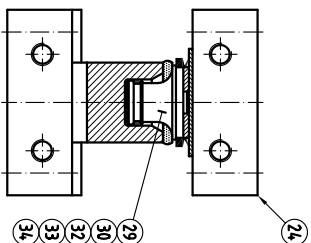


Parts list, zinc plated: 4-9024-B

Free sliding pin



See type 52-18SS-A

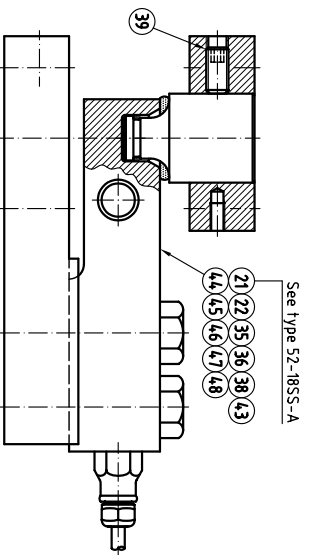


TYPE 52-18SS-C

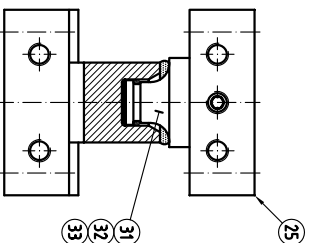


Parts list, zinc plated: 4-9024-C



Fixed pin



See type 52-18SS-A



MODULE TYPE	MAX FORCE F	MAX SIDE FORCE	MAX LIFT OFF FORCE	MAX JACKING FORCE
52-18SS-A	200% of E max	100% of E max	4.0 kN	100 kN
52-18SS-B	200% of E max	n. a.	4.0 kN	100 kN
52-18SS-C	200% of E max	100% of E max	4.0 kN	100 kN

Qty	Group	Item	Description	Material/Grp No	Remarks
1	C	B	A	INAINA KN	
			07-03-26	12	
WEIGH MODEL TYPE 52-185S (SLIDING SYSTEM)					
WITH SB4/SB5-50 KN AND SB14/-10 KIB					
ASSEMBLY / OUTLINE DRAWING					
					
				Tolerance, un- less otherwise specified acc. to ISO 2768 medium hole 2-9026 ISO 10122-1 Sheet	
					
				2-9026	
				1	
				FLINTEC	

RELATED DRAWINGS:

- 4-9123 CAD-file drawing with SBA/SBS-50 kN
- 4-9124 CAD-file drawing with SBA/SLB-10 kN
- 4-9086 Assembly / cad-file for lift off protection
- 4-9129 Orientation drawing
- 4-9130 Installation examples
- 4-9131 Application guidelines