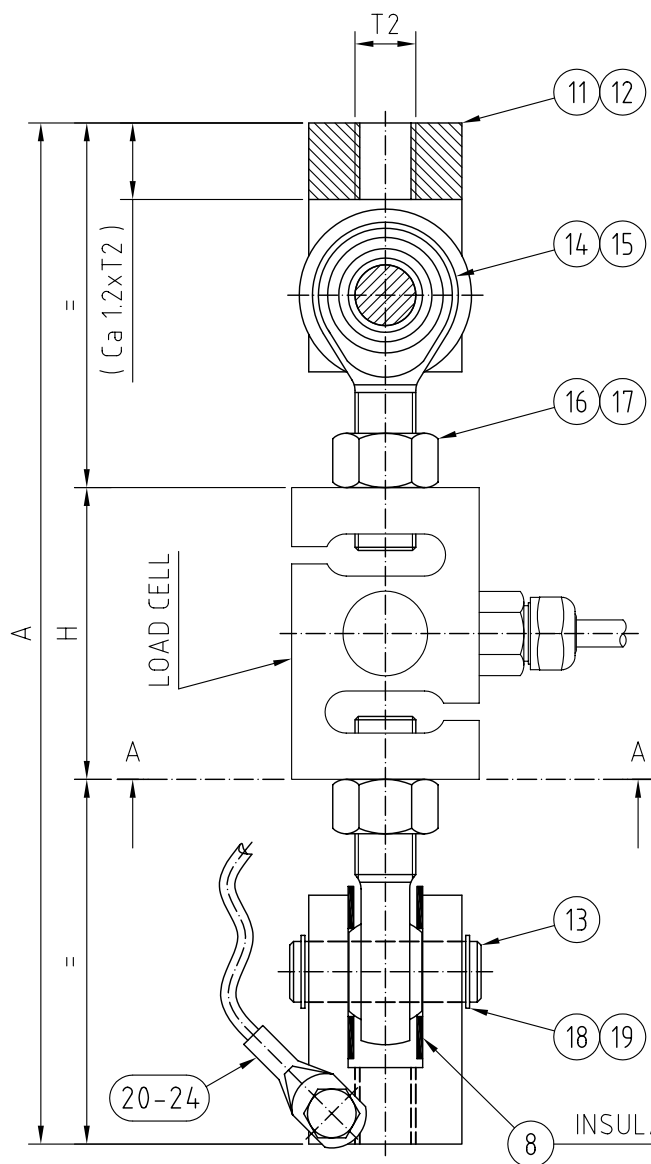


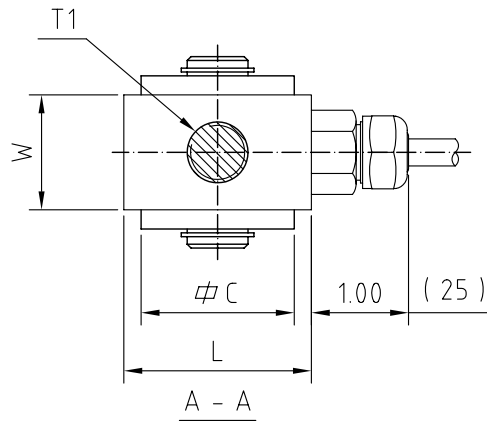
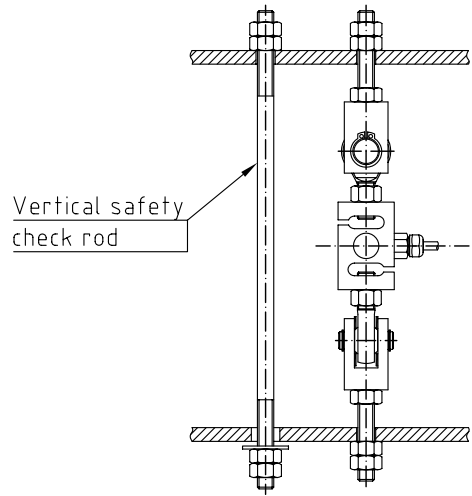
This document must not be copied without our written permission, and the contents thereof must not be imparted to a third party nor be used for any unauthorized purpose. Contravention will be prosecuted.

Rev	Date	Sign/Appr	Description	Rev	Date	Sign/Appr	Description
1	040131	N.A	Parts list changed	2	040709	N.A	ULB-2000kg/3000kg/5000kg-U added
3	040723	N.A	Max safe static load changed	4	040812	N.A	H was 92 / L was 86 for ULB-3000kg
5	060223	PN/KN	NOTE added.				



#### NOTE:

For applications where breakage could cause hazard to human beings, vertical safety check rods shall always be used.



PARTS LIST ZINC PLATED	PARTS LIST STAINLESS	FOR LOAD CELL TYPE AND CAPACITY	A		C		H		L		W		T1 ( UNF )	T2 ( UNC )	MAX SAFE STATIC LOAD	
			inch	mm	inch	mm	inch	mm	inch	mm	inch	mm				
4-6971-A	4-6971-B	ULB-100kg-U	9.25	235	1.18	30	3.00	76.2	1.93	49	1.18	30	1/2"-20	1/2"-13	2	0.45
		ULB-200kg-U													4	0.90
		ULB-500kg-U													10	2.25
		ULB-1000kg-U													15	3.37
4-6972-A	4-6972-B	ULB-1000kg-H	10.50	267	1.57	40	3.00	76.2	1.93	49	1.18	30	5/8"-18	5/8"-11	20	4.50
		ULB-2000kg-U	10.50	267	1.57	40	3.39	86	3.00	76.2	1.18	30	5/8"-18	5/8"-11	30	6.74
4-8044-A	4-8044-B	ULB-3000kg-U	12.00	305	1.97	50	3.49	89	3.49	89	1.57	40	3/4"-16	3/4"-10	45	10.12
4-6973-A	4-6973-B	ULB-5000kg-U	17.00	432	2.36	60	5.75	146	3.59	91.2	2.22	56.4	1"-12	1"-8	75	16.86

Qty				Group	Item	Description				Material/Drg No		Remarks	
D	C	B	A			Designed	Drawn	Checked	Date	Scale			
						N.A	N.A	K.N	04-01-10	-		<b>FLINTEC</b>	
TENSION ASSEMBLY TYPE 53-04, UNIFIED THREAD FOR LOAD CELL TYPE ULB WITH UNIFIED THREAD ASSEMBLY / OUTLINE DRAWING													
												Drawing No. <b>4-8043</b>	
												Rev. No. <b>5</b>	
												Sheet of	