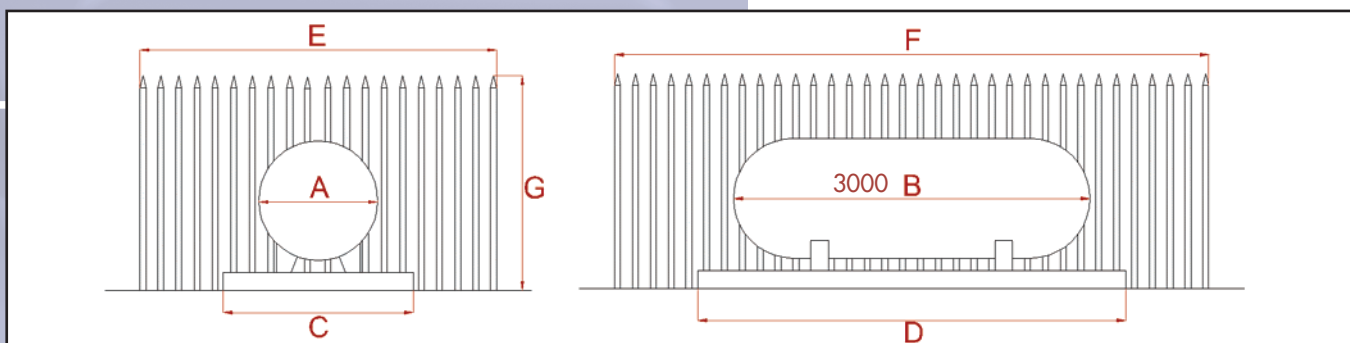


## Dimensions of Tanks and Compounds



	TANK			BASE		COMPOUND	
	A	B	C	D	E	F	G
1x1 Tonne	2000mm	4000mm	2600mm	4600mm	4000mm	6000mm	1800mm
2x1 Tonne			4600mm	4600mm	5000mm	6000mm	1800mm
3x1 Tonne			6600mm	4600mm	8000mm	6000mm	1800mm
1x2 Tonne	2200mm	4700mm	2800mm	5300mm	4200mm	6700mm	1800mm
2x2 Tonne			5000mm	5300mm	6400mm	6700mm	1800mm
3x2 Tonne			7200mm	5300mm	8600mm	6700mm	1800mm
1x4 Tonne	2500mm	6400mm	3100mm	7000mm	5500mm	9400mm	1800mm
2x4 Tonne			5600mm	7000mm	8000mm	9400mm	1800mm
3x4 Tonne			8100mm	7000mm	10500mm	9400mm	1800mm

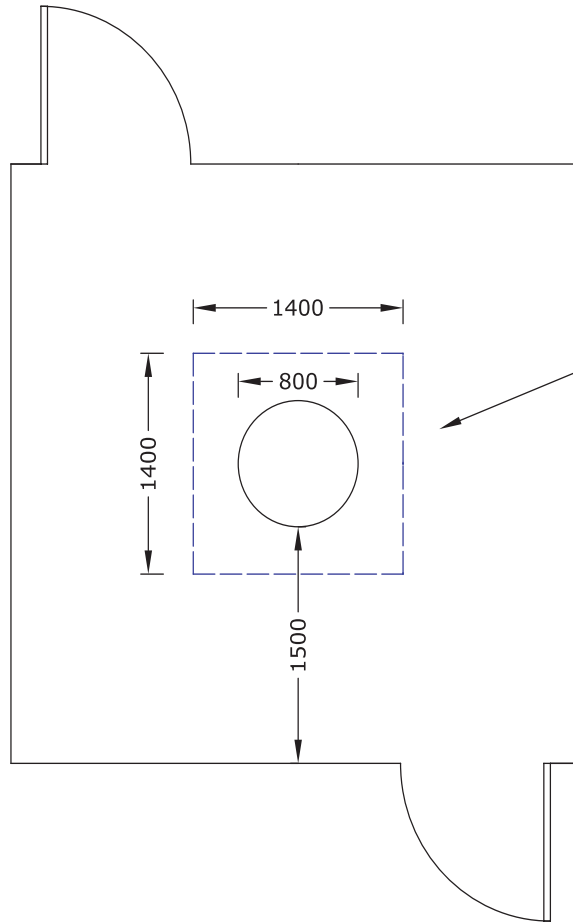
Note: For arrangements which are not given in the above table, please contact Flogas Technical Services on 028 9073 2611

## Vaporisation Capacity of Tanks

Gas off-take / vaporisation capacity for conventional above ground tanks (Reduce by 50% for underground\* tanks where available)

Tank Size	kw/hr	m3/hr	Btu/hr
200kg	53	2	181,000
600kg	132	5	450,000
1000kg*	170	6.6	580,000
2000kg*	322	12.5	1,100,000
4000kg*	528	20.4	1,800,000

An industrial type fence is required, e.g. open mesh or palisade types, which: ensures adequate ventilation, is at least 1.8m high and is at a distance not less than 1.5m from the storage vessels. Fences should have at least two means of exit, gates should open outwards and should not be self locking.



Tank base should extend at least 300mm around tanks i.e. 1400mm x 1400mm Minimum depth of 100mm concrete on a hardcore fill. For ease of maintenance it is recommended to concrete all area inside the compound

## SEPARATION DISTANCES

Tank must be 2.5m from buildings, boundaries and fixed sources of ignition. This may be reduced to 0.3m by using a firewall (normally on one side only).  
Tank must be 3m from oil tanks where oil tank capacity is <3000 litres.  
Tank must be 6m from oil tanks where oil tank capacity is >3000 litres.



Airport Road West,  
Belfast, BT3 9ED  
Telephone: 028 9073 2611  
Fax: 028 9073 2020  
Web: [www.flogasni.com](http://www.flogasni.com)

PROJECT:  
TECHNICAL SERVICES MANUAL

TITLE:  
100 GALLON BULK TANK (VERTICAL)

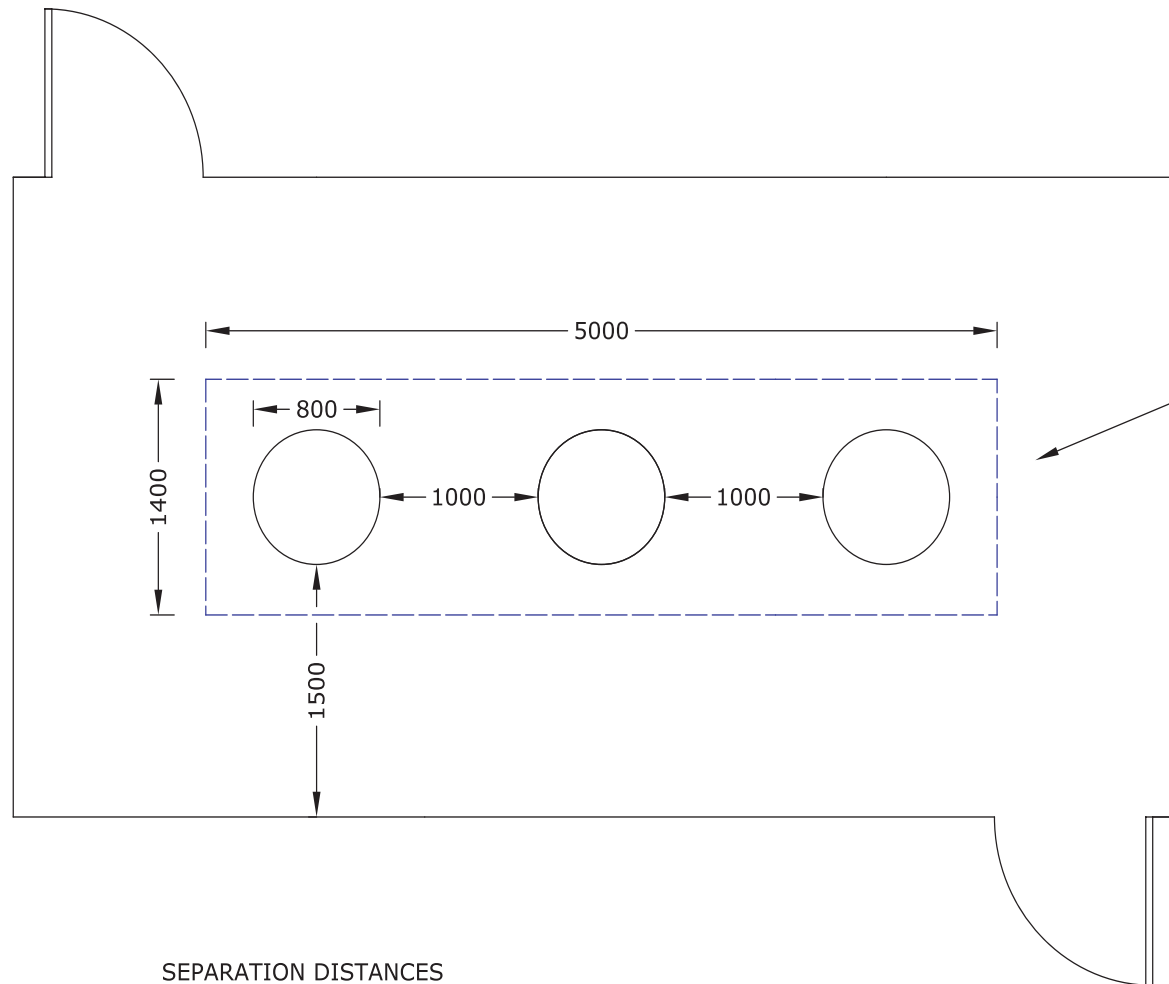
DATE: JULY 2008 SCALE: NTS

DRAWN BY: SP DRAWING NO. FG1001

PRIVATE & CONFIDENTIAL  
This drawing is the property of  
DCC Energy Ltd and must not be  
altered or reproduced without the  
written permission of the company

# ABOVE GROUND TANKS 100 GALLON BULK TANK (VERTICAL) (3 TANK LAYOUT)

An industrial type fence is required, e.g. open mesh or palisade types, which: ensures adequate ventilation, is at least 1.8m high and is at a distance not less than 1.5m from the storage vessels. Fences should have at least two means of exit, gates should open outwards and should not be self locking.



Tank base should extend at least 300mm around tanks i.e. 5000mm x 1400mm  
Minimum depth of 100mm concrete on a hardcore fill. For ease of maintenance it is recommended to concrete all area inside the compound

## SEPARATION DISTANCES

Tank must be 2.5m from buildings, boundaries and fixed sources of ignition. This may be reduced to 0.3m by using a firewall (normally on one side only).  
Tank must be 3m from oil tanks where oil tank capacity is <3000 litres.  
Tank must be 6m from oil tanks where oil tank capacity is >3000 litres.

### PROJECT:

TECHNICAL SERVICES MANUAL

### TITLE:

100 GALLON BULK TANK (VERTICAL)  
THREE TANK LAYOUT

DATE: JULY 2008

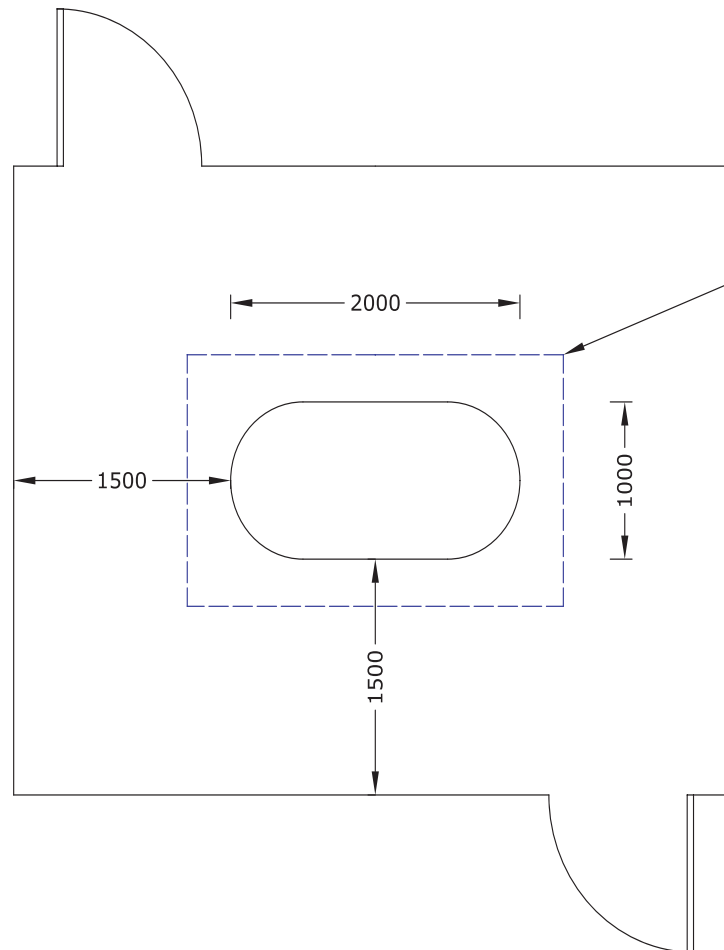
SCALE: NTS

DRAWN BY: SP

DRAWING NO. FG1002

PRIVATE & CONFIDENTIAL  
This drawing is the property of  
DC Energy Ltd and must not be  
altered or reproduced without the  
written permission of the company

An industrial type fence is required, e.g. open mesh or palisade types, which: ensures adequate ventilation, is at least 1.8m high and is at a distance not less than 1.5m from the storage vessels. Fences should have at least two means of exit, gates should open outwards and should not be self locking.



Tank base should extend at least 300mm around tanks i.e. 2600mm x 1600mm Minimum depth of 100mm concrete on a hardcore fill. For ease of maintenance it is recommended to concrete all area inside the compound

## SEPARATION DISTANCES

Tank must be 3m from buildings, boundaries and fixed sources of ignition. This may be reduced to 1.5m by using a firewall (normally on one side only).  
Tank must be 3m from oil tanks where oil tank capacity is <3000 litres.  
Tank must be 6m from oil tanks where oil tank capacity is >3000 litres.



Airport Road West,  
Belfast, BT3 9ED  
Telephone: 028 9073 2611  
Fax: 028 9073 2020  
Web: [www.flogasni.com](http://www.flogasni.com)

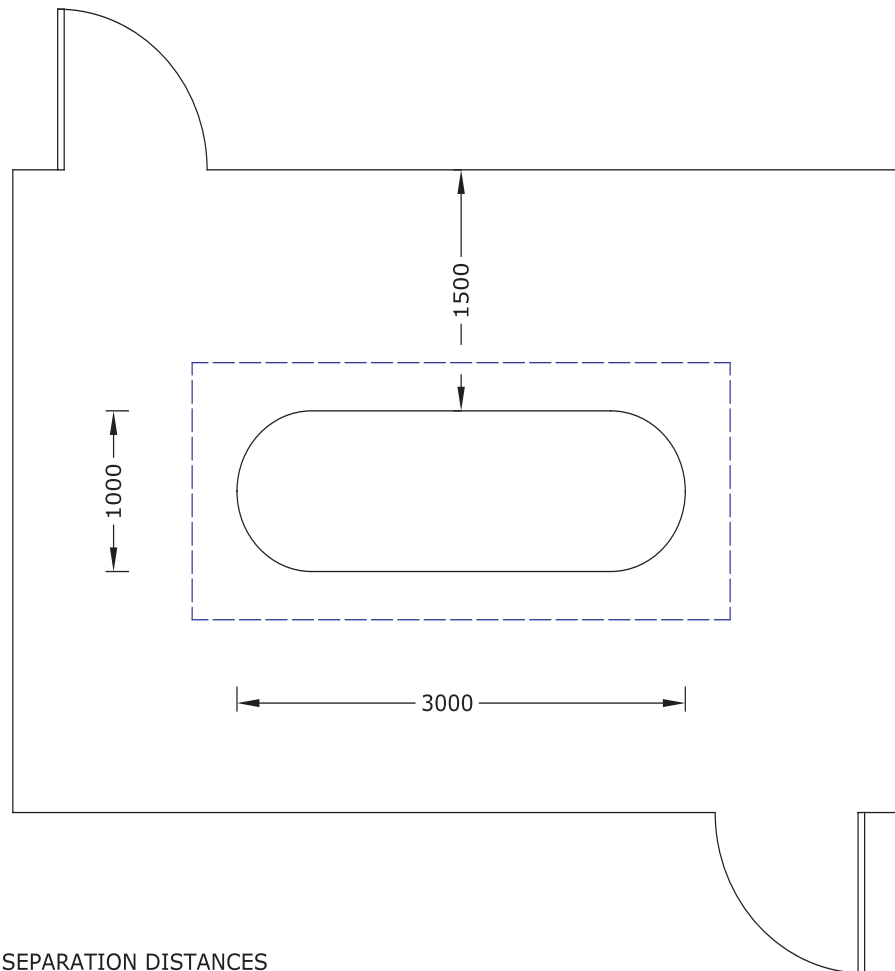
PROJECT:  
TECHNICAL SERVICES MANUAL

TITLE:  
1/2 TONNE BULK TANK

DATE: JULY 2008	SCALE: NTS
DRAWN BY: SP	DRAWING NO: FG1003

PRIVATE & CONFIDENTIAL  
This drawing is the property of  
DCC Energy Ltd and must not be  
altered or reproduced without the  
written permission of the company

An industrial type fence is required, e.g. open mesh or palisade types, which: ensures adequate ventilation, is at least 1.8m high and is at a distance not less than 1.5m from the storage vessels. Fences should have at least two means of exit, gates should open outwards and should not be self locking.



Tank base should extend at least 300mm around tanks i.e. 3600mm x 1600mm  
Minimum depth of 100mm concrete on a hardcore fill. For ease of maintenance it is recommended to concrete all area inside the compound

## SEPARATION DISTANCES

Tank must be 3m from buildings, boundaries and fixed sources of ignition. This may be reduced to 1.5m by using a firewall (normally on one side only).  
Tank must be 3m from oil tanks where oil tank capacity is <3000 litres.  
Tank must be 6m from oil tanks where oil tank capacity is >3000 litres.



Airport Road West,  
Belfast, BT3 9ED  
Telephone: 028 9073 2611  
Fax: 028 9073 2020  
Web: [www.flogasni.com](http://www.flogasni.com)

## PROJECT:

TECHNICAL SERVICES MANUAL

## TITLE:

1 TONNE BULK TANK

DATE: JULY 2008

SCALE: NTS

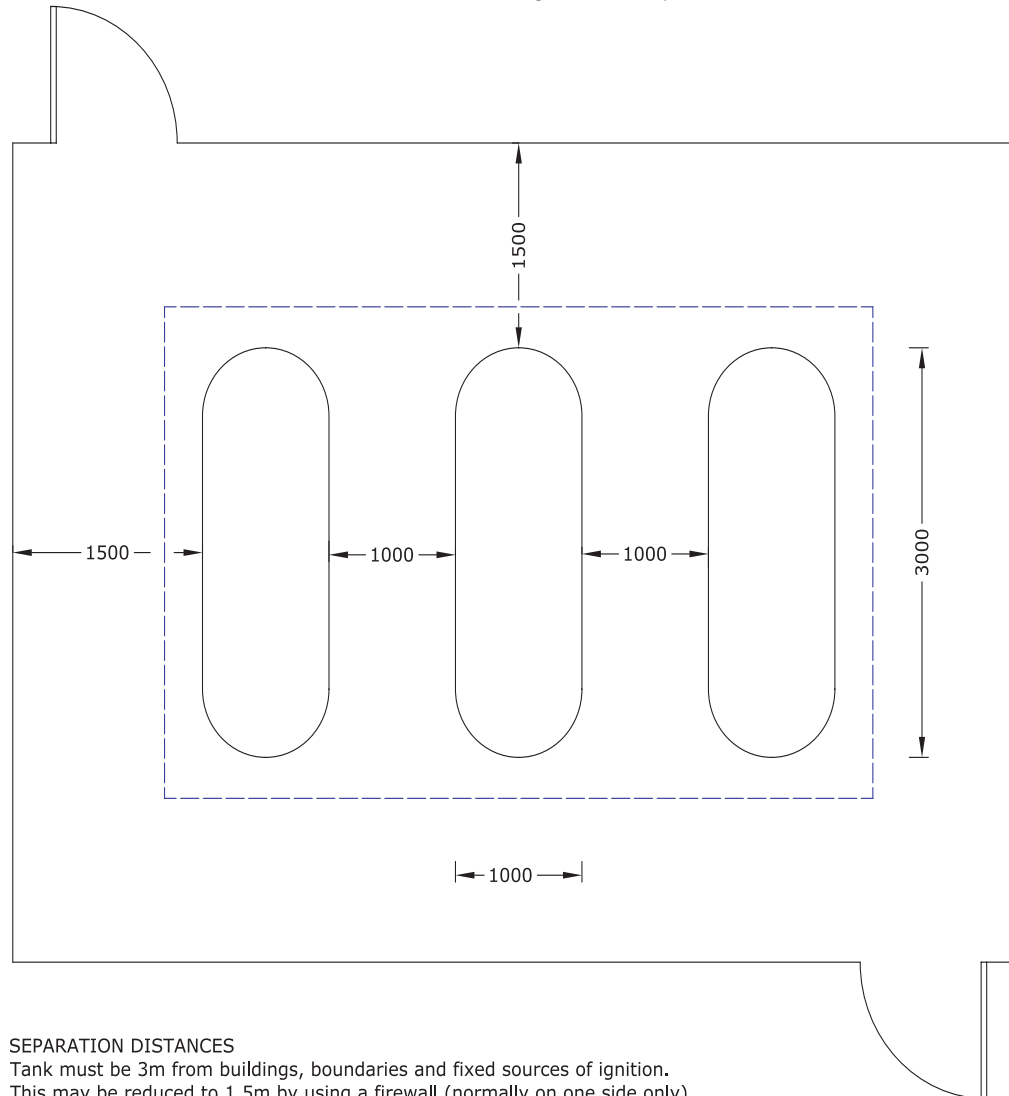
DRAWN BY: SP

DRAWING NO: FG1004

PRIVATE & CONFIDENTIAL  
This drawing is the property of  
DCC Energy Ltd and must not be  
altered or reproduced without the  
written permission of the company

# ABOVE GROUND TANKS 1 TONNE BULK TANK (3 TANK LAYOUT)

An industrial type fence is required, e.g. open mesh or palisade types, which: ensures adequate ventilation, is at least 1.8m high and is at a distance not less than 1.5m from the storage vessels. Fences should have at least two means of exit, gates should open outwards and should not be self locking.



Tank base should extend at least 300mm around tanks i.e. 5600mm x 3600mm Minimum depth of 100mm concrete on a hardcore fill. For ease of maintenance it is recommended to concrete all area inside the compound

## SEPARATION DISTANCES

Tank must be 3m from buildings, boundaries and fixed sources of ignition. This may be reduced to 1.5m by using a firewall (normally on one side only).  
Tank must be 3m from oil tanks where oil tank capacity is <3000 litres.  
Tank must be 6m from oil tanks where oil tank capacity is >3000 litres.



Airport Road West,  
Belfast, BT3 9ED  
Telephone: 028 9073 2611  
Fax: 028 9073 2020  
Web: [www.flogasni.com](http://www.flogasni.com)

## PROJECT:

TECHNICAL SERVICES MANUAL

## TITLE:

1 TONNE BULK TANK  
THREE TANK LAYOUT

DATE: JULY 2008

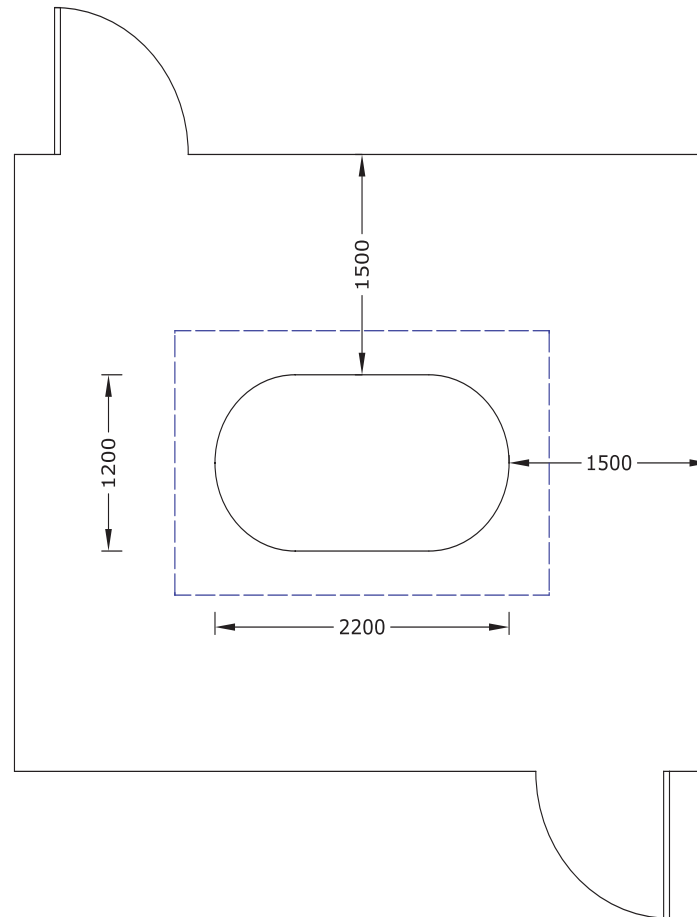
SCALE: NTS

DRAWN BY: SP

DRAWING NO. FG1005

**PRIVATE & CONFIDENTIAL**  
This drawing is the property of  
DCC Energy Ltd and must not be  
altered or reproduced without the  
written permission of the company

An industrial type fence is required, e.g. open mesh or palisade types, which: ensures adequate ventilation, is at least 1.8m high and is at a distance not less than 1.5m from the storage vessels. Fences should have at least two means of exit, gates should open outwards and should not be self locking.



Tank base should extend at least 300mm around tanks i.e. 2800mm x 1800mm  
Minimum depth of 100mm concrete on a hardcore fill. For ease of maintenance it is recommended to concrete all area inside the compound

## SEPARATION DISTANCES

Tank must be 3m from buildings, boundaries and fixed sources of ignition.  
This may be reduced to 1.5m by using a firewall (normally on one side only).  
Tank must be 3m from oil tanks where oil tank capacity is <3000 litres.  
Tank must be 6m from oil tanks where oil tank capacity is >3000 litres.



Airport Road West,  
Belfast, BT3 9ED  
Telephone: 028 9073 2611  
Fax: 028 9073 2020  
Web: [www.flogasni.com](http://www.flogasni.com)

## PROJECT:

TECHNICAL SERVICES MANUAL

## TITLE:

1 TONNE BULK TANK (SHORT)

DATE: JULY 2008

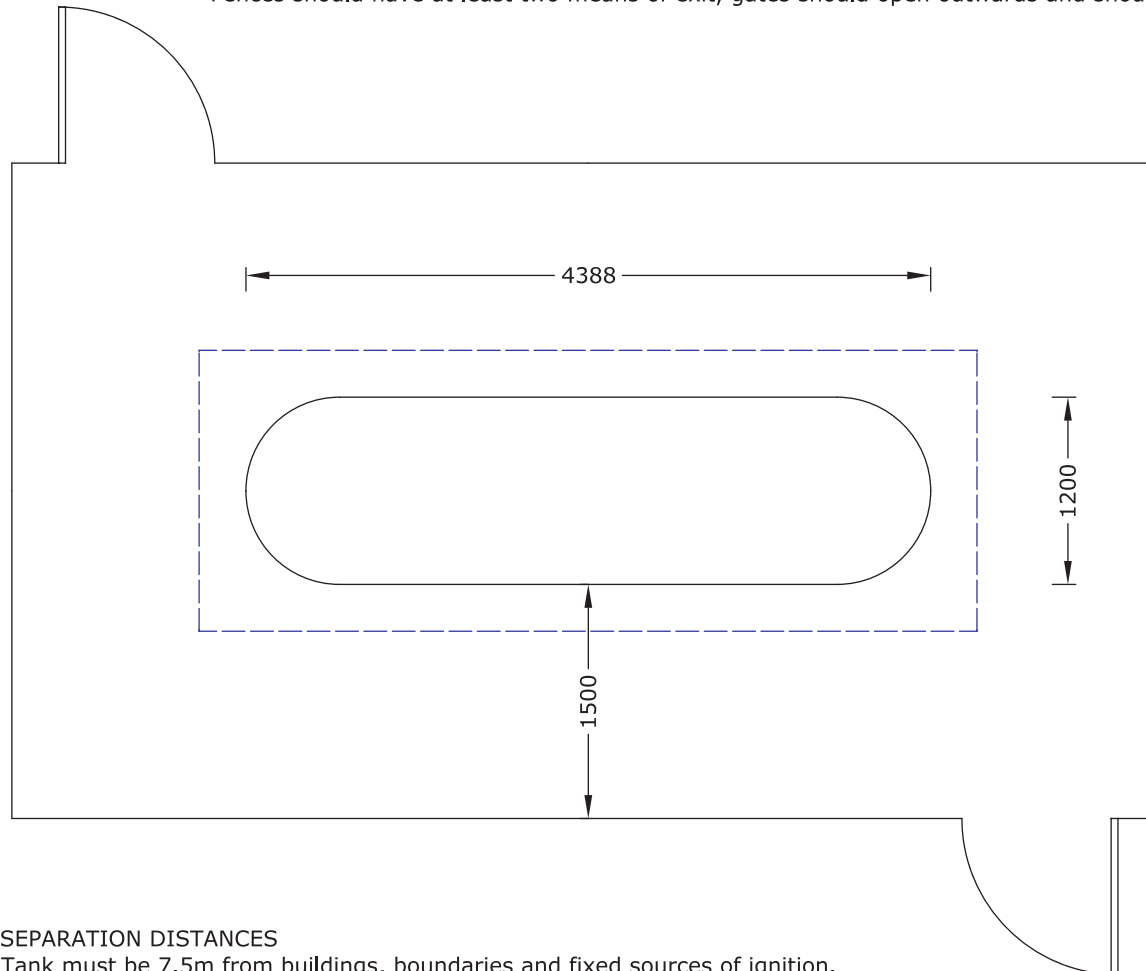
SCALE: NTS

DRAWN BY: SP

DRAWING NO. FG1006

**PRIVATE & CONFIDENTIAL**  
This drawing is the property of  
DCC Energy Ltd and must not be  
altered or reproduced without the  
written permission of the company

An industrial type fence is required, e.g. open mesh or palisade types, which: ensures adequate ventilation, is at least 1.8m high and is at a distance not less than 1.5m from the storage vessels. Fences should have at least two means of exit, gates should open outwards and should not be self locking.



Tank base should extend at least 300mm around tanks i.e. 4988mm x 1800mm  
Minimum depth of 100mm concrete on a hardcore fill. For ease of maintenance it is recommended to concrete all area inside the compound

## SEPARATION DISTANCES

Tank must be 7.5m from buildings, boundaries and fixed sources of ignition. This may be reduced to 4m by using a firewall (normally on one side only).  
Tank must be 3m from oil tanks where oil tank capacity is <3000 litres.  
Tank must be 6m from oil tanks where oil tank capacity is >3000 litres.



Airport Road West,  
Belfast, BT3 9ED  
Telephone: 028 9073 2611  
Fax: 028 9073 2020  
Web: www.flogasni.com

PROJECT:  
TECHNICAL SERVICES MANUAL

TITLE:  
2 TONNE BULK TANK

DATE: JULY 2008

SCALE: NTS

DRAWN BY: SP

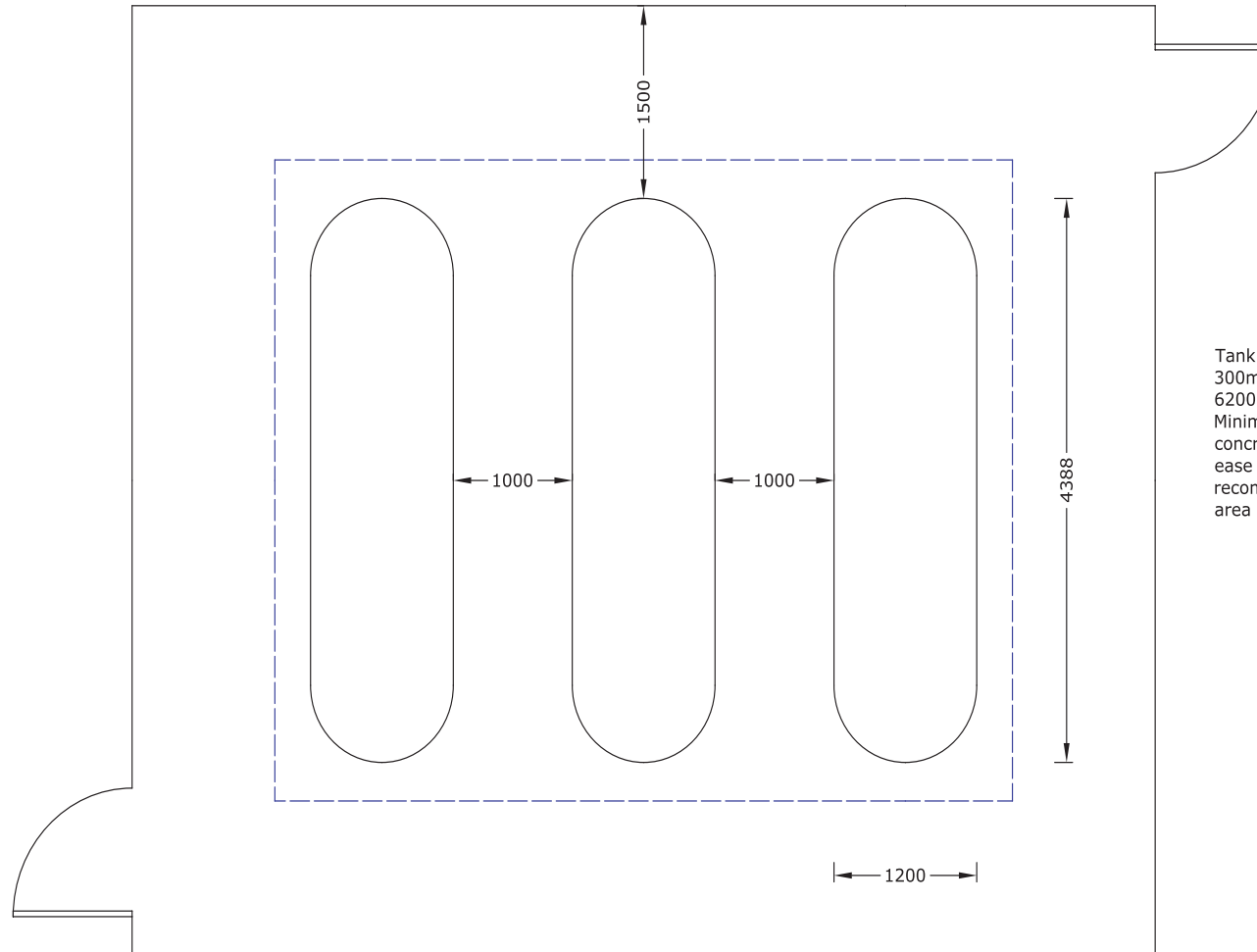
DRAWING NO: FG1007

PRIVATE & CONFIDENTIAL  
This drawing is the property of  
DCC Energy Ltd and must not be  
altered or reproduced without the  
written permission of the company



# ABOVE GROUND TANKS 2 TONNE BULK TANK (3 TANK LAYOUT)

An industrial type fence is required, e.g. open mesh or palisade types, which: ensures adequate ventilation, is at least 1.8m high and is at a distance not less than 1.5m from the storage vessels. Fences should have at least two means of exit, gates should open outwards and should not be self locking.



Tank base should extend at least 300mm around tanks i.e. 6200mm x 4988mm  
Minimum depth of 100mm concrete on a hardcore fill. For ease of maintenance it is recommended to concrete all area inside the compound

## SEPARATION DISTANCES

Tank must be 7.5m from buildings, boundaries and fixed sources of ignition. This may be reduced to 4m by using a firewall (normally on one side only).  
Tank must be 3m from oil tanks where oil tank capacity is <3000 litres.  
Tank must be 6m from oil tanks where oil tank capacity is >3000 litres.



Airport Road West,  
Belfast, BT3 9ED  
Telephone: 028 9073 2611  
Fax: 028 9073 2020  
Web: www.flogasni.com

## PROJECT:

TECHNICAL SERVICES MANUAL

## TITLE:

2 TONNE BULK TANK  
THREE TANK LAYOUT

DATE: JULY 2008

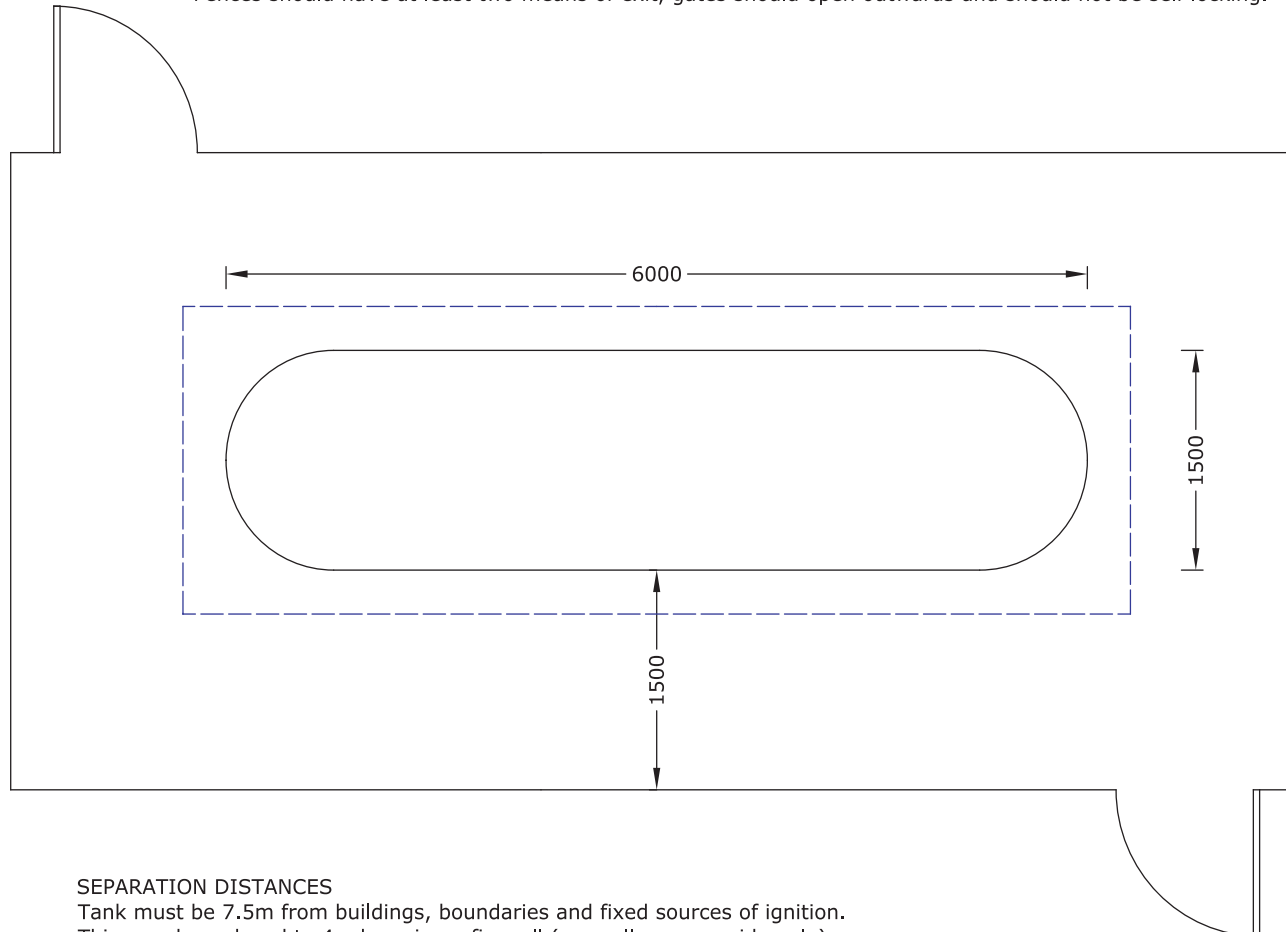
SCALE: NTS

DRAWN BY: SP

DRAWING NO. FG1008

**PRIVATE & CONFIDENTIAL**  
This drawing is the property of  
DCC Energy Ltd and must not be  
altered or reproduced without the  
written permission of the company

An industrial type fence is required, e.g. open mesh or palisade types, which: ensures adequate ventilation, is at least 1.8m high and is at a distance not less than 1.5m from the storage vessels. Fences should have at least two means of exit, gates should open outwards and should not be self locking.



Tank base should extend at least 300mm around tanks i.e. 6600mm x 2100mm  
Minimum depth of 150mm concrete on a hardcore fill. For ease of maintenance it is recommended to concrete all area inside the compound

## SEPARATION DISTANCES

Tank must be 7.5m from buildings, boundaries and fixed sources of ignition. This may be reduced to 4m by using a firewall (normally on one side only).  
Tank must be 3m from oil tanks where oil tank capacity is <3000 litres.  
Tank must be 6m from oil tanks where oil tank capacity is >3000 litres.



Airport Road West,  
Belfast, BT3 9ED  
Telephone: 028 9073 2611  
Fax: 028 9073 2020  
Web: [www.flogasni.com](http://www.flogasni.com)

## PROJECT:

TECHNICAL SERVICES MANUAL

## TITLE:

4 TONNE BULK TANK

DATE: JULY 2008

SCALE: NTS

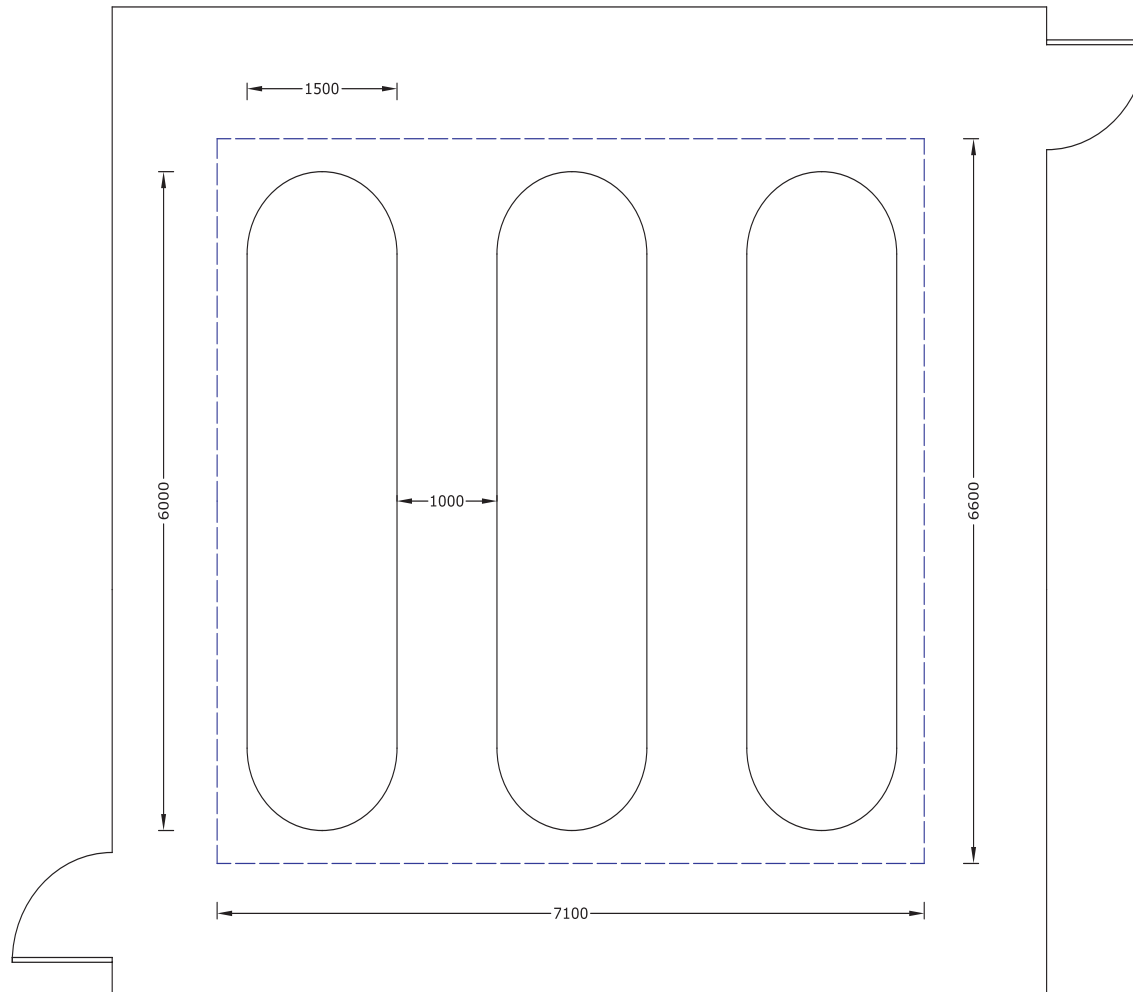
DRAWN BY: SP

DRAWING NO. FG009

**PRIVATE & CONFIDENTIAL**  
This drawing is the property of  
DCC Energy Ltd and must not be  
altered or reproduced without the  
written permission of the company

# ABOVE GROUND TANKS 4 TONNE BULK TANK (3 TANK LAYOUT)

An industrial type fence is required, e.g. open mesh or palisade types, which: ensures adequate ventilation, is at least 1.8m high and is at a distance not less than 1.5m from the storage vessels. Fences should have at least two means of exit, gates should open outwards and should not be self locking.



Tank base should extend at least 300mm around tanks i.e. 7100mm x 6600mm  
Minimum depth of 150mm concrete on a hardcore fill. For ease of maintenance it is recommended to concrete all area inside the compound

## SEPARATION DISTANCES

Tank must be 7.5m from buildings, boundaries and fixed sources of ignition. This may be reduced to 4m by using a firewall (normally on one side only).  
Tank must be 3m from oil tanks where oil tank capacity is <3000 litres.  
Tank must be 6m from oil tanks where oil tank capacity is >3000 litres.



Airport Road West,  
Belfast, BT3 9ED  
Telephone: 028 9073 2611  
Fax: 028 9073 2020  
Web: [www.flogasni.com](http://www.flogasni.com)

PROJECT:  
TECHNICAL SERVICES MANUAL

TITLE:  
4 TONNE BULK TANK  
THREE TANK LAYOUT

DATE: JULY 2008

SCALE: NTS

DRAWN BY: SP

DRAWING NO. FG1010

PRIVATE & CONFIDENTIAL  
This drawing is the property of  
DCC Energy Ltd and must not be  
altered or reproduced without the  
written permission of the company