

**Florida
Studio
Theatre**

Richard Hopkins
Producing Artistic Director

Stage III Playbill



THE
LAST MATCH

BY ANNA ZIEGLER



Sponsored in part by the State of Florida, Department of State, Division of Arts and Culture, the Florida Council on Arts and Culture, and the National Endowment for the Arts.

THE LAST MATCH

by Anna Ziegler

CAST

(in alphabetical order)

Mallory Anique Clements*
Galina Lucy Lavelly*
Tim.....Tom Patterson*
Sergei.....Michael Perrie Jr.*

Scenic Designer
Clint Wright

Costume Designer
Erin Barnett

Lighting Designer
Andrew Gray

Sound Designer
Louis Vetter Torres

Movement Coordinator
Ellie Mooney

Tennis Consultants
Benjamin Brandt & GI Hodges

Stage Manager
Shira Lebovich*

Directed by
Kate Alexander

Underwriters

Gaele Barthold, Ed & Judy Christian, Georgia Court, Wendy & Bob Grady,
Dennis & Graci McGillicuddy, Patrick & Mary Mulva, Anne H.S. Nethercott, Carol B. Williams

THE LAST MATCH IS PRESENTED BY SPECIAL ARRANGEMENT WITH
DRAMATISTS PLAY SERVICE, INC., NEW YORK.

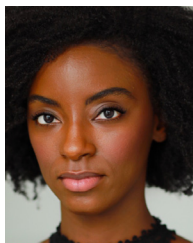
THE LAST MATCH was originally produced in New York City by Roundabout Theatre Company
(Todd Haimes, Artistic Director; Julia C.Levy, Executive Director; Sydney Beers, General Manager)
at the Harold and Miriam Steinberg Center for Theatre/Laura Pels Theatre on October 24, 2017

THE LAST MATCH had its world premiere at The Old Globe Theatre in San Diego, California
(Barry Edelstein, Artistic Director; Michael G. Murphy, Managing Director)

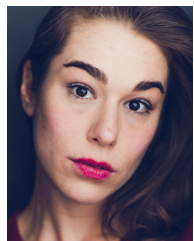
A workshop production of *THE LAST MATCH* was presented at New York Stage and Film & Vassar
at Powerhouse Theatre, Summer 2015

The video or audio recording of this performance by any means is strictly prohibited.

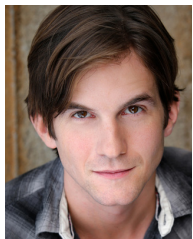
ARTIST PROFILES



ANIQUE CLEMENTS (Mallory) is an NYC based actress. Ever grateful to be post-Pandemic shutdown, she is elated to perform for FST Stage III again. Previously at FST, she appeared as Renee in *Babel*, as Det. Morris in *The Nether*, and Kerry in *Kunstler* alongside her cast mate and friend, the late Sam Mossler. Other recent credits include NYC: *The Savage Queen* (National Black Theatre); *Thou Wilt Scream* (Random Access Theatre). Regional: *Cymbeline*, *The Scottish Play*, *White Rabbit*, *Red Rabbit*, and *A Midsummer Night's Dream* (Great River Shakespeare Festival).



LUCY LAVELLY (Galina) is from NYC and was most recently seen in *Babel* at FST. She loves Shakespeare, Sondheim, the sun, salsa, chips, & all the cool plays she's done! Favorite credits include: *Macbeth* (Orlando Shakes), *Grapes of Wrath & Other Desert Cities* (Asolo Rep), *Chicken Shop* (Urbanite) and more across the country. University of Notre Dame (BA) & FSU/Asolo Conservatory (MFA), AEA/SAG/AFTRA. Lucy runs the Night Shift Theatre Company, and is a licensed NYC tour guide. @rainbowdaylucy



TOM PATTERSON (Tim) Previously at FST: *Babel*, *Cherry Docs*, *Hand to God*, *The Hound of the Baskervilles*, *Shotgun*. Broadway: *1984*. Off-Broadway: *Three Sisters* (Sheen Center); *About Love* (Culture Project). Regional: *Delmonico* (Bay Street Theater); *Constellations* (Studio Theatre, Helen Hayes Award); *Ether Dome* (Hartford Stage, Huntington Theatre Company); *Sideways* (La Jolla Playhouse); *Of Mice and Men*

(Northern Stage); *Murder on the Nile*, *Bedroom Farce* (The Barnstormers). TV/Film: *Thorp*, "The Equalizer." MFA: UCSD. He is originally from South Bend, Indiana.



MICHAEL PERRIE JR. (Sergei) is a Virginia-based Actor/Playwright/Musician, originally from Baltimore, MD. National Tours: *Million Dollar Quartet*, and *BUDDY*. Regional credits include; *The Nerd*, *Hank Williams: Lost Highway* (Maples Rep), *BUDDY* (FST, FloridaRep, Maples, Engeman, TBTS), *Million Dollar Quartet* (MMT, Laguna Playhouse, BBBay), *Matilda* (Engeman), *The Full Monty* (Maples Rep), *The Music Man*, *Beauty & The Beast*, *The Producers* (TBTS), and more. Film/TV: *Death of An Underling*, *Girl Watching*, *The Food That Built America S2:E1*, *F'd*, *Silver*, *Adam & Eve*. michaelperriejr.com

KATE ALEXANDER (Director) is the Associate Director At-Large of FST and the Founder of the FST Theatre School with its acting method of training. Ms. Alexander has directed numerous productions and premieres on the FST stages, including but not limited to: *What the Constitution Means to Me*; *Maytag Virgin*; *The Legend of Georgia McBride*; *America in One Room*; *Bright Star*; *Ethel Waters*; *His Eye is on the Sparrow*; *Wednesday's Child*; *Cherry Docs*; *Straight White Men*; *Always...Patsy Cline*; *The Things They Carried*; *Native Gardens*; *Heisenberg*; *The Absolute Brightness of Leonard Pelkey*; and *brownsville song (b-side for tray)*. Ms. Alexander has also been a resident actress for over 25 years. Some of her leading roles were in the plays: Edward Albee's *The Goat*; *Filumena*; *Master Class*; Edward Albee's *Three Tall Women*; *The Occupant*; *The Play About the Baby*; *Golda's Balcony*; and *Taking Shakespeare*. Ms. Alexander is the recipient of numerous acting, directing, and public service awards, including FAER, She Knows Where She's Going Award (Girls, Inc.), The Woman

ARTIST PROFILES

of Light Award, National Council of Jewish Women Award, The Woman of Power Award, the Sarasota County Arts Leadership Award, Education Award, Sarasota Manatee Jewish Federation, The Unity Award, and most recently, the Suncoast Woman of Action Award. Ms. Alexander leads the FST Forums Series and developed the Blue Butterfly Theatre Program, a program for teens suffering from grief or loss. She created the Art of The Gesture program at Ringling College of Animation and is the co-author of *The Animated Short*, with Karen Sullivan, now in its 2nd edition.

SHIRA LEBOVICH (Stage Manager) is a graduate from the University of North Carolina at Greensboro, where she earned her BFA in Design and Technical Production with a concentration on Stage Management. She spent two years working as a Stage Management Intern at Florida Studio Theatre. Her most recent Stage Management credits include *Babel*, *Something Rotten!* (Equity ASM-FST), *Every Brilliant Thing* (Horizon Theatre Company) and *Glorious!* (Winnepesaukee Playhouse). After a stint of teaching, she's thrilled to be returning to FST, professionally.

CLINT WRIGHT (Scenic Designer) The 2022-2023 Winter Season marks Clint's first season as FST's Technical Director. Before joining FST's production staff, Clint was the Broadcast Studio Managing Engineer for Communication Studies at Longwood University for six years. He has worked at several regional summer theatres, including the Post Playhouse (Crawford, NE), Timber Lake Playhouse (Mt. Carroll, IL), and Shawnee Summer Theatre (Bloomfield, IN). Favorite shows he's worked on include *Godspell* (multiple theatres), *The Underpants by Steve Martin* (Longwood University), *Reel Music*, and *What the Constitution Means to Me* (FST). MFA from Full Sail University.

ERIN BARNETT (Costume Designer) is a costume designer originally from Marietta, GA and is currently Florida Studio Theatre's Assistant Costume Shop Manager. Costume design credits include: *The Lion, The Witch and the Wardrobe*;

Deck the Halls; Playmakers; Smoke and Mirrors (FST); *Blood at the Root, Commedia, Thurgood* (Chautauqua Theater Company); *Footloose, The Robber Bridegroom* (Jenny Wiley Theatre); *By the Bog of Cats* (Indiana University). MFA: Indiana University. BA: Furman University. erin-barnett.com

ANDREW GRAY (Lighting Designer) Originally from Scotland, Andrew graduated from the Liverpool Institute for Performing Arts (LIPA) in 2012 and has been designing/programming professionally for over a decade. Notable credits include: *Giant Spectacular* (Liverpool Capital of Culture), *Mamma Mia!* (Surflight Theatre), *Buddy: The Buddy Holly Story* (Beobe Productions), *To Kill a Mockingbird* (Parker Snell Productions), and *Lost & Found* (BP productions). Select FST credits include: *The Lion, the Witch and the Wardrobe; A Place in the Sun; The '70s: More Than a Decade; Charlotte's Web; Smoke & Mirrors; Maytag Virgin; Ring Of Fire; Friends in Low Places; Laughing Matters; and The Wanderers.*

LOUIS VETTER TORRES (Sound Designer) is thrilled to be at FST. He is originally from Union City, NJ. He graduated from Fairleigh Dickinson University with a BA in Theatre. Favorite acting credits include Ritchie Valens (U/S) in *Buddy...* (FST), Trevor (U/S) in *The Play That Goes Wrong* (FST), *Alexander and the Terrible, Horrible, No Good, Very Bad Day* (Two Beans/Theatreworks), *The Two Month Rule* (NYMTF), and *In the Heights* (Mystic Vision Players). Sound Design: *Dancing at Lughnasa* (Fairleigh Dickinson University), *The Legend of Georgia McBride, Smoke & Mirror*, and *Babel* (FST).

ELLIE MOONEY (Movement Coordinator) is an FST Associate Artist and has over 25 years of professional experience as a director, choreographer, performer, and teaching artist. Select FST credits: *Network* (Intimacy Coordinator), *Something Rotten!* (Director/Choreographer), *Charlotte's Web* (Director), *Maytag Virgin* (Intimacy Coordinator), *Bright Star* (Choreographer), and *The Marvelous*

ARTIST PROFILES

Wonderettes (Choreographer). After 15 years in NYC, working nationally and internationally, Ellie made an artistic home in Philadelphia, working for the historic Walnut Street Theatre on over 30 productions. In addition to teaching at Rutgers University, Ellie recently returned to school full-time to enrich her EDI, Intimacy Direction, and Gender Study training at the University of the Arts.

ANNA ZIEGLER (Playwright) has written the plays *Actually* (produced at Manhattan Theatre Club, Williamstown Theatre Festival, Geffen Playhouse, London's Trafalgar Studios and more; L.A. Ovation Award winner for Playwriting for an Original Play), the widely produced *Photograph 51* (directed on the West End by Michael Grandage and starring Nicole Kidman; WhatsOnStage Award for Best New Play; *Chicago Tribune's* #1 play of 2019 and a "Best of the Year" play in *The Washington Post* and UK's *The Telegraph*), *Boy* (Outer Critics Circle John Gassner Award nominee), *The Wanderers* (playing this season at Roundabout Theatre Company and City Theatre; previously produced at The Old Globe;

Theater J; Craig Noel Award winner for Outstanding New Play), *The Last Match* (Roundabout Theatre Company; The Old Globe; Writers' Theatre; City Theatre), and *A Delicate Ship* (*New York Times* Critic's Pick). She holds commissions from Roundabout Theatre Company, Second Stage Theatre and The Geffen Playhouse. Oberon/Bloomsbury Books has published a collection of her work entitled "*Anna Ziegler: Plays One*"; "*Plays Two*" is forthcoming. Recent: *Photograph 51* at Melbourne Theatre Company and Ensemble Theatre (Sydney); *The Great Moment* at Seattle Rep (world premiere); *Antigones* at the O'Neill Playwrights Conference; *The Janeiad* at Cape Cod Theatre Project and Ojai Playwrights Conference. She is developing television and movie projects with Paramount, *Defiant by Nature* and Leviathan Productions. *Photograph 51* is now available on Audible and in Bloomsbury's Modern Classics series. More at annabziegler.net.

TENNIS CONSULTANTS: Benjamin Brandt and GI Hodges for professional training in physical movement, research, consulting, and ongoing support.

NOW ALSO PLAYING

"STELLAR"
- Total Theater

HELD OVER!

"GRIPPING"
- Sarasota Herald-Tribune

"AS TIMELY AS EVER"
- Sarasota Magazine

NETWORK

Adapted by Lee Hall.

Based on the screenplay by Paddy Chayefsky.

EXECUTIVE STAFF

RICHARD HOPKINS is the Producing Artistic Director of Florida Studio Theatre. Mr. Hopkins has fostered the development of FST's Mainstage and Cabaret productions. His many directing Mainstage credits include: *Network*, *Sophie Tucker: The Last at the Red Hot Mamas*, *Curious Incident of the Dog in the Night-Time*, *Honor Killing*, *Inspired Lunacy*, *The Best of Enemies*, *Next to Normal*, *Race*, *Ruined*, *The 25th Annual Putnam County Spelling Bee*, *Boleros for the Disenchanted*, *Permanent Collection*, and *Metamorphoses*, among numerous other plays. Mr. Hopkins led the development of FST's Cabaret productions *The Wanderers*, *Outlaws and Angels*, *Guitar Girls*, *Mack the Knife*, *Older than Dirt*, *Piano Men*, and *The Prima Donnettes*. Mr. Hopkins also serves as the Chief Executive Officer of Florida Studio Theatre. This includes overseeing the creation and implementation of all FST programming, including Mainstage, Cabaret, Stage III, New Play Development, Education, and Touring. Since his arrival at FST in 1980, Mr. Hopkins has guided the theatre from a small touring company to a nationally-recognized regional theatre, which impacts over 200,000 adults and children annually. He created the New Play Development Program, the Cabaret Series, FST's award-winning WRITE A PLAY Program, and he has directed the design and renovation of all FST's theatres. Mr. Hopkins is the recipient of numerous awards including the Arts Leadership Award from the Sarasota Arts Council, the Richard G. Fallon Award for Artistic Excellence from the Florida Professional Theatres Association, and the 2012 Cultural Champion Award from the Arts and Cultural Alliance of Sarasota County. In 2016, Mr. Hopkins was awarded the Luminaire Award, honoring excellence in creativity, philanthropy, advocacy, and all elements that are keys to future growth of the arts in Sarasota. In 2017, Mr. Hopkins was awarded the Florida Theatre Conference Lifetime Achievement Award for contributing to the rich cultural fabric of the Sarasota community and the state of Florida, and his dedication to developing future artists, educators, and advocates.

REBECCA HOPKINS serves as Managing Director for Florida Studio Theatre, and as such, is the Chief Operations Officer. Mrs. Hopkins is responsible for oversight of FST's Administration, including the Business Office, Development, Marketing, Box Office, Front of House, Restaurant, Budgeting, and maintaining the overall quality of FST's internal management. Mrs. Hopkins serves as an officer on the Board of Directors for the League of Resident Theatres. She also serves on the Board of the Sarasota Arts & Cultural Alliance. She is the former President of the National New Play Network and a former Board member of the Theatre Communications Group. Mrs. Hopkins has been actively involved in development of FST's Cabaret productions since her arrival in 1998. In addition to being Lead Developer for *The '70s: More Than A Decade*, this season she is also part of the development team for *Reel Music*. Additionally, she was the Head Writer for *Laughing Matters*, and was the Head Writer for all five previous volumes of the show. Previously she was the lead developer on *Friends in Low Places*; *Light my Fire*; *Thats Amoré*; *The Wonder Years: The Music of the Baby Boomers*; *Unchained Melodies*; *Blue Suede Shoes*; *Gypsies, Tramps and Thieves*; *Yesterday*; and *American Pie*. In addition, she is the founder and producer of FST Improv and the Sarasota Improv Festival. In 2012, the Arts & Cultural Alliance awarded Mrs. Hopkins the Cultural Champion Award in recognition of her many years of accomplishment and growth with Florida Studio Theatre. In 2016, Mrs. Hopkins was awarded the Luminaire Award, honoring excellence in creativity, philanthropy, advocacy, and all elements that are keys to future growth of the arts in Sarasota.



@FloridaStudioTheatre
#TheLastMatch

UNDERWRITERS

GAELE BARTHOLD FST is family and an integral part of my life. Its community contributions are myriad and a model of theatrical excellence. Quality and diverse stage productions at affordable prices are but one component of FST's offerings. Other contributions include extensive contact with local schools to foster student creativity and theatre appreciation, structured and wide-ranging educational programs for adults and children, community forums and other community outreach programs, and a strong commitment to New Play Development and excellence in the arts. FST is a gem that warrants our widespread financial and artistic support. I am proud to serve on FST's board and to support it financially and otherwise.

ED & JUDY CHRISTIAN Ed's passion for the theatre lives on in the Christian family's continued support of Florida Studio Theatre. FST sets the mark and excels in invariably producing a high-level, quality theatre experience. No doubt about it, FST is a strong part of the fabric that makes Sarasota the stand-out community that it is. Please join with us and other donors to ensure that FST will grow and continually challenge us with great theatre and entertainment on all levels.

GEORGIA COURT I love great theatre and FST delivers that. FST is among the best theatre companies I have seen, but it is more than a theatre company. It is an organization that recognizes it is part of the greater community—and it reaches out to that community in positive, productive ways. As the owner of Bookstore1 Sarasota, I have been proud to partner with FST in the creation and celebration of contemporary literary works. Having FST so accessible adds to the joy of living in the fabulous arts community that is Sarasota.

WENDY & BOB GRADY We were so impressed when we first visited FST, that we immediately wanted to become involved. Whenever you come across a vision as unique as FST's, where the key to getting art into the hearts of so many has been found, in a comfortable and easily accessible way, you know you've spotted a winner. Our love for FST, its people, and the visiting

talent make us proud to be Underwriters and hope that others will join us in supporting FST's important work.

DENNIS & GRACI MCGILLICUDDY FST is important to us because we believe so strongly in the transformative power of the arts. For more than 30 years now, we have been so fortunate to experience first-hand how that transformative power works its magic in the hands of an organization that is not only experienced and dedicated, but so highly skilled in their craft. The values of the theatre and its leadership, as reflected in its mission and as manifested in its work, whether it be on the Mainstage, in the Cabaret, in its education and community outreach programs, are values that we so strongly believe in. It has been and continues to be such a privilege to be supportive of FST and the meaningful and wonderful impact the theatre has on our community

PATRICK & MARY MULVA From cabaret to comedy to drama to children's theatre and educational opportunities, FST offers an amazing array of theatrical experiences to Sarasota audiences. We are honored to be part of the group of people helping to make all of this available at an affordable price for everyone.

ANNE H.S. NETHERCOTT ★ (1926-2019) When asked to define giving, Anne said: "My mother used to say the best way to find you is to lose yourself, by focusing on the needs of others rather than on oneself." So giving has always been an important family value, which in childhood was reinforced by the community experience of surviving The Depression. Anne was proud to be a supporter of FST.

CAROL B. WILLIAMS Although I enjoy most theatrical genres, I am particularly drawn to the cutting-edge plays that make one think or that take a different slant on an issue. I am pleased that FST has launched another Stage III season of these works for our enjoyment and edification. Supporting this innovative and community-oriented organization is a joy for me.

★ Recognizes our Legacy Underwriters & Legacy Co-Producers for their commitment to the Art of FST, establishing an endowed fund to support cherished programs for many years to come.

FST COMPANY

BOARD OF TRUSTEES

President.....	Dennis McGillicuddy
Vice-President	Richard Hopkins
Secretary/Treasurer.....	Patricia Courtois
Trustee	Gaele Barthold
Trustee	Neil M. Comber
Trustee	Georgia Court
Trustee	Robert Israeloff
Trustee	Patrick Mulva
Trustee	Honorable Charles Williams

EXECUTIVE STAFF

Producing Artistic Director	Richard Hopkins
Managing Director.....	Rebecca Hopkins

ARTISTIC STAFF

Associate Director	Sean Daniels
Associate Director At-Large	Kate Alexander
Casting/Hiring Coordinator	Alexa Vetter Torres
Resident Pianist	Jim Prosser
Associate Artist.....	Catherine Randazzo
Associate Artist.....	Rachel Moulton
Associate Artist.....	Ellie Mooney
Director of Improvisation.....	Will Luera
Assistant to the Artistic Director.....	Doris Iemolo
Literary Associate.....	Helena Rankin

PRODUCTION STAFF

Associate Production Manager.....	Allison Hannon
Associate Production Manager.....	Louis Vetter Torres
Production Office Manager.....	Andie Cummings
Production Stage Manager.....	Roy Johns
Stage Manager.....	Jim Anthony
Stage Manager.....	Shira Lebovich
Technical Director.....	Clint Wright
Associate Technical Director.....	Nathan Clark
Costume Shop Manager	Mari Taylor Floyd
Assistant Costume Shop Manager.....	Erin Barnett
Seasonal Draper	Ana Strickland
Sound Supervisor	Thom Korp
Lighting Supervisor.....	Andrew Gray
Lead Carpenter.....	Casey Seiler
Props & Paint Supervisor.....	Danielle McKay
Company Manager	Enrico Drago

ADMINISTRATIVE STAFF

General Manager	Jill Zakrzewski
Director of IT.....	Clarke Weigle
Director of Finance.....	Jacinta Kavanaugh
Business Manager.....	Carmen Gonzalez
Associate Business Manager	Orville Cordero
Business Office Associate	David Wallace
Asst. to the Managing Dir	Sarah Durham
Receptionist.....	Joan O'Dowd
Director of Marketing.....	Becca Boyd
Public Relations Manager.....	Lydia Baxter
Events Coord. & Digital Marketing Assistant.....	Franki Arroyo
Marketing Assistant	Destiny Jackson
Director of Indiv. Giving.....	Melody Mora-Shihadeh
Major Gifts Officer	Jay Lockaby
Development Associate	Kristin Hartnett
Development Associate.....	Rachel Moulton
Development Associate.....	Bo Smith
Development Assistant.....	Claudio DeJesus Arteta
General Management Associate	JT Priar
Patron Services Manager	Kelsey Wehde-Wilson
Box Office Manager	Gigi Delpero
Asst. Box Office Manager	Bev Kippenhan
Asst. Box Office Manager	Seth Hilbert
Asst. Box Office Manager.....	Jordyn Davis
Restaurant Manager.....	Tom Curry
Restaurant Manager.....	Karen Kraster
Restaurant Manager.....	Pamela Dillon
Kitchen Manager	Steve Swan

FACILITIES

Facilities Manager.....	Justin Piccolo
Facilities Technician.....	Agustin Garcia
Facilities Technician.....	Bernardo Hernandez
Facilities Assistant.....	Luke Johnson

EDUCATION & TOURS

Director of Children's Theatre	Caroline Saldivar
Manager of Education & WRITE A PLAY.....	Shelby Lynhall
Teaching Artist.....	Genesis Perez-Padilla
Teaching Artist.....	Kate Walsh
Education Administrator	Pam Smith

COMMUNITY RESOURCE GROUP

Larry Coleman	Bonny Israeloff	Graci McGillicuddy
Shirley Fein	Valerie Joels	Jill Ross
Maddy Freshwater	Patricia Kordis	Ina Schnell
Carol Gilbert	Marie Kropp	Lois Schottenstein
Sy Goldblatt	Susan Landau	Lois Stulberg
Robert Grady	Frank Malickson	Charlie Ann Sypprett
Wendy Grady	Matty Matheson	Martin Tafel

AUDIENCE ENRICHMENT GROUP

Hon. Larry L. Eger	Ina Schnell
Trevor Harvey	Willie Shaw
The Jewish Federation of Sarasota-Manatee	Charles Shaw
Gilbert King	Howard Tevlowitz
Michele D. Redwine	Honorable Charles Williams
Dr. Eddy Regnier	Rose Chapman
Renée James Gilmore	

OUTSIDE ASSISTANCE

House Counsel.....	Michael E. Siegel
.....	Shutts & Bowen LLP

PROFESSIONAL TRAINING PROGRAM

Acting Apprentice	Ben Brandt
Acting Apprentice	Cameron Clements
Acting Apprentice	Allison Daniels
Acting Apprentice	Athena Jean-Étienne
Acting Apprentice	Marissa Gast
Acting Apprentice	Jeric Gutierrez
Acting Apprentice	Linnzie Hays
Acting Apprentice	Deonta Mitchell
Acting Apprentice	Keegan Penny
Acting Apprentice	Storm Tracy
Acting Apprentice	Gemma Vodacek
Artistic Fellow.....	Sydney Scott
Children's Theatre & Education Intern.....	Miles Davidow
Company Management Intern	Tyler Brady
Costume Intern	Annie Watson
General Management Intern.....	Chris Pendry
Lighting Intern.....	Joseph Storti
Literary Fellow	Sammy Pontello
Literary Fellow	Jessica Sager
Literary Intern.....	Sam-Claire Bieber
Literary Intern.....	Kacy Jones
Literary Intern.....	Dellan Short
Production Management Intern.....	Cassidy Hayden
Props & Paint Intern	Adriana Ayala
Sound Intern	Anakin Garner
Stage Management Intern	Katie Chabot
Stage Management Intern	Emilia Ciotti Hernández
Stage Management Intern	Matthew Owitz
Stage Management Intern	Sam Powers
Stage Management Intern	Rach Roach
Stage Management Intern	Passion Shaffer
Stage Management Intern	Jamie Thygesen