

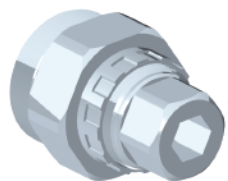


CINCH
POWER METER

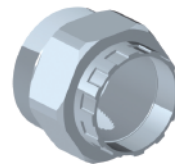
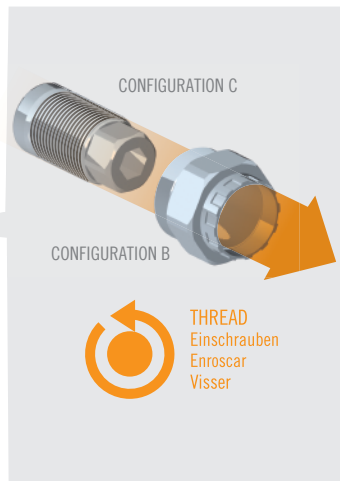
SPINDLE INSTALLATION MANUAL



CHECK RACEFACE.COM OR EASTONCYCLING.COM
FOR INSTALLATION UPDATES



CONFIGURATION A
CINCH CRANK EXTRACTOR



CONFIGURATION B
CINCH POWER NDS
CRANK BOLT ADAPTER



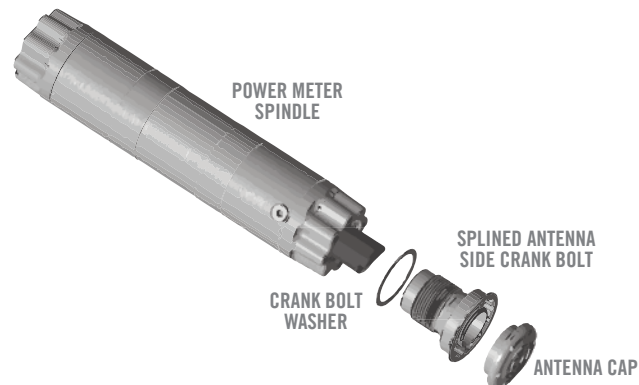
CONFIGURATION C
8-16mm HEX ADAPTER



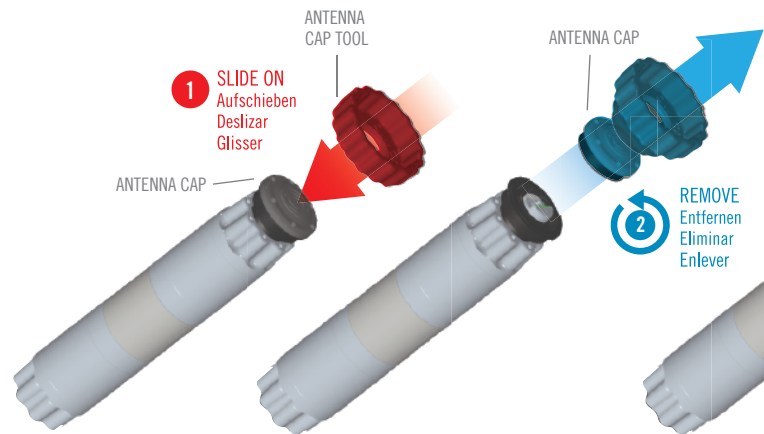
ANTENNA CAP TOOL



MICRO USB CABLE



POWER METER INSTALL



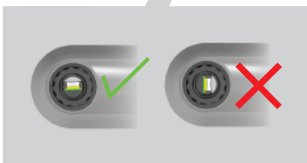
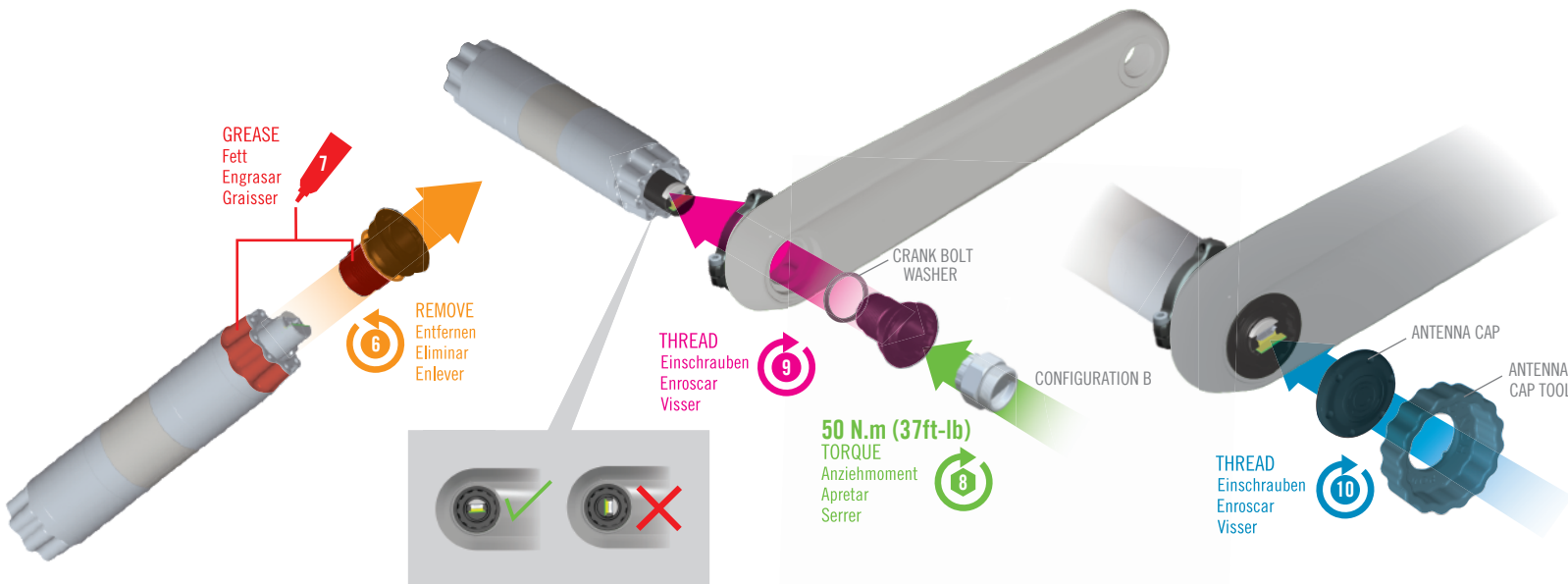
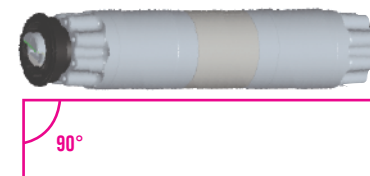
4 DOWNLOAD LATEST CINCH APP FOR YOUR SMART PHONE FROM GOOGLE PLAY OR APP STORE.



GET IT ON
Google Play

Download on the
App Store

5 LAY SPINDLE ON LEVEL SURFACE AND UPDATE FIRMWARE.



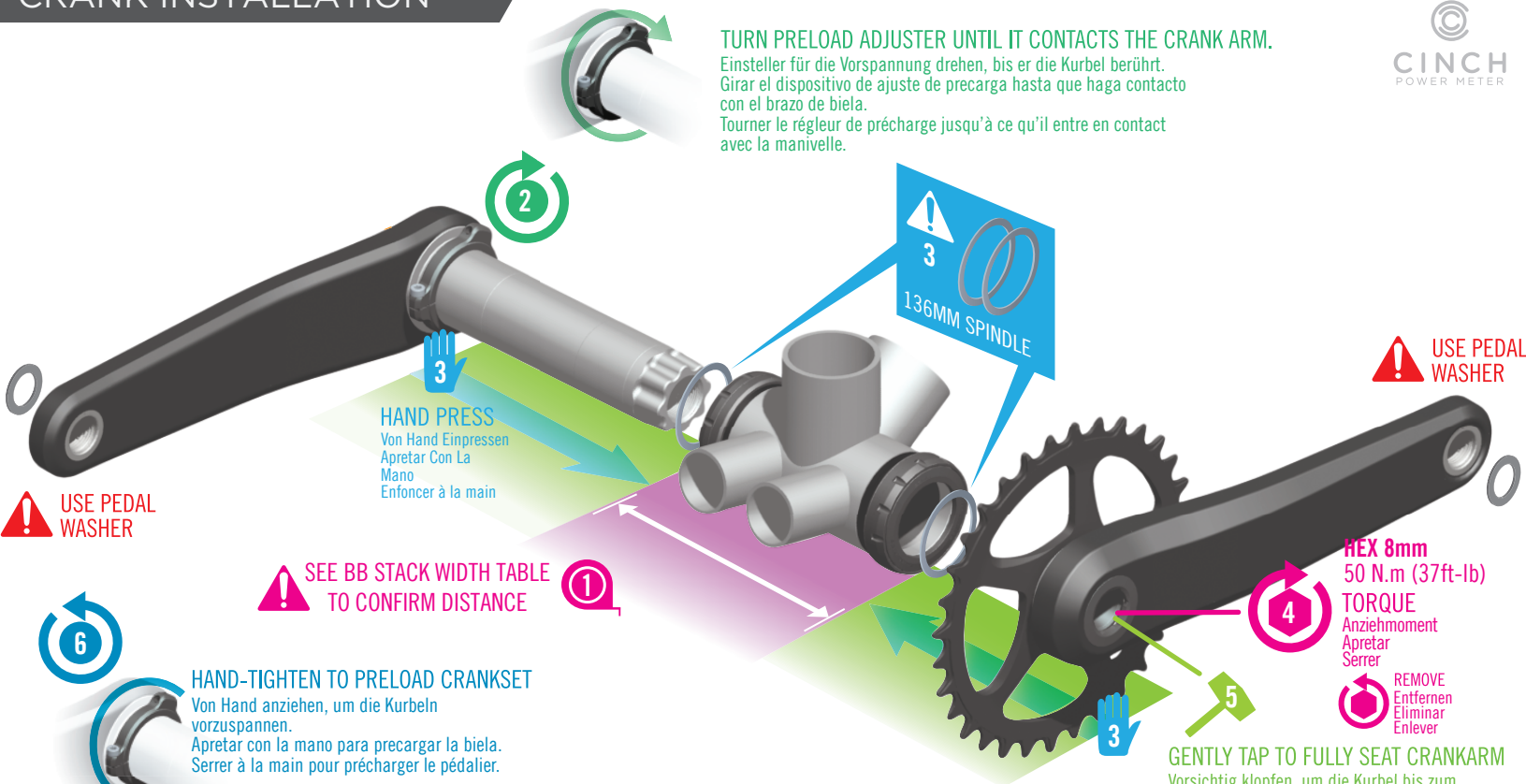
CRANK INSTALLATION



TURN PRELOAD ADJUSTER UNTIL IT CONTACTS THE CRANK ARM.

Einsteller für die Vorspannung drehen, bis er die Kurbel berührt.
Girar el dispositivo de ajuste de precarga hasta que haga contacto con el brazo de biela.

Tourner le réglage de précharge jusqu'à ce qu'il entre en contact avec la manivelle.



USE PEDAL WASHER

HAND PRESS
Von Hand Einpressen
Apretar Con La Mano
Enfoncer à la main

SEE BB STACK WIDTH TABLE TO CONFIRM DISTANCE

136MM SPINDLE

USE PEDAL WASHER

HEX 8mm
50 N.m (37ft-lb)
TORQUE
Anziehmoment
Apretar
Serrer

REMOVE
Entfernen
Eliminar
Enlever

GENTLY TAP TO FULLY SEAT CRANKARM

Vorsichtig klopfen, um die Kurbel bis zum Anschlag auf die Achse zu treiben.
Golpear ligeramente hasta acoplar bien el brazo de biela.
Tapoter gentiment pour asseoir correctement la manivelle.

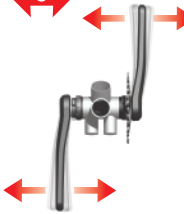
6

HAND-TIGHTEN TO PRELOAD CRANKSET
Von Hand anziehen, um die Kurbeln vorzuspannen.
Apretar con la mano para precargar la biela.
Serrer à la main pour précharger le pédalier.

7

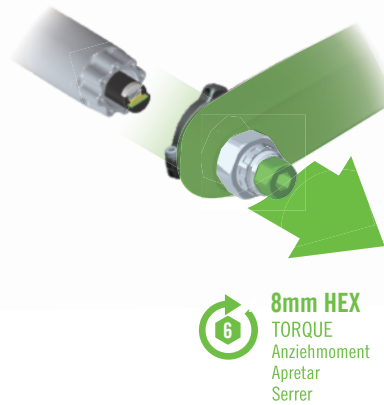
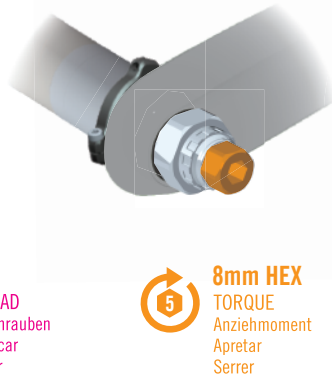
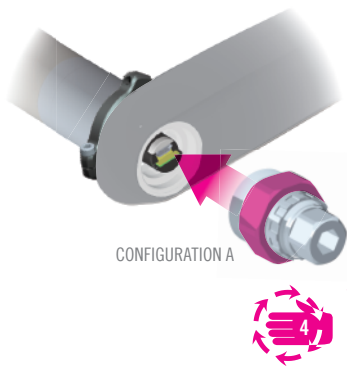
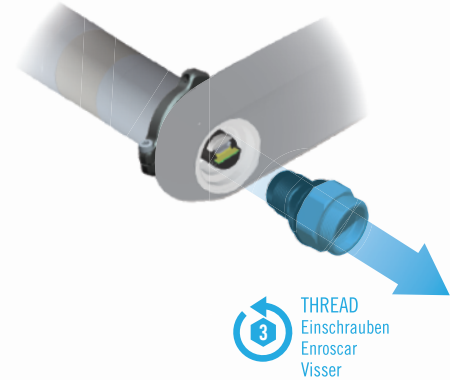
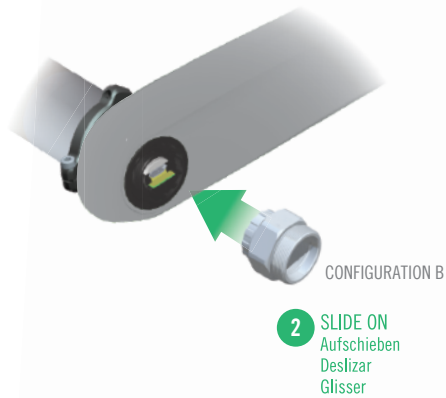
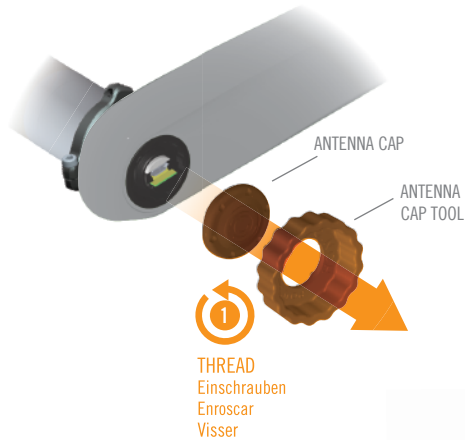
HEX 2mm
TIGHTEN PRELOAD ADJUSTER BOLT TO CLOSE GAP
Einsteller für die Vorspannung anziehen, um die Lücke zu schließen.
Apretar el perno del dispositivo de ajuste de precarga hasta cerrar el hueco.
Serrer le boulon de réglage de la précharge pour refermer l'espace.

8



ENSURE THERE IS NO PLAY

Prüfen, dass kein Spiel auftritt.
Comprobar el juego.
Vérifier le jeu





CINCH
POWER METER

BB STACK WIDTH TABLE

Name	Total BB Width*
OPM1730129	92.1 ± 1.0 mm
OPM1730136	96.1 ± 1.0 mm



**INCLUDING REQUIRED SPACERS.
SEE BB INSTRUCTION SHEET.**

Einschließlich der notwendigen
Distanzscheiben. Includendo
separadores requeridos.

Ver instrucciones de pedalier.
Incluant les entretoises nécessaires.

Consulter la fiche d'instructions
de l'axe de pédalier

CHECK RACEFACE.COM OR EASTONCYCLING.COM
FOR INSTALLATION UPDATES

