



491 W. Garfield Ave., Coldwater, MI 49036

Phone: 517-279-2135

Web/live chat: www.bds-suspension.com

E-mail: tech@bds-suspension.com

Part#: 123407

Track Bar Relocation Kit

Ford F250, F350

READ AND UNDERSTAND ALL INSTRUCTIONS AND WARNINGS PRIOR TO INSTALLATION OF SYSTEM AND OPERATION OF VEHICLE.

SAFETY WARNING BDS Suspension Co. recommends this system be installed by a professional technician. In addition to these instructions, professional knowledge of disassembly/ reassembly procedures and post installation checks must be known.

INSTALLATION INSTRUCTIONS

1. Park and secure the vehicle on a hard, level surface. Block the rear tires for safety.
2. Disconnect the track bar bracket from the frame by removing the three mounting bolts (Fig. 1). Retain hardware.
3. Install the track bar relocation bracket to the frame using the original track bar bracket mounting holes with three 1/2" x 2" bolts and nuts. Attach the OE track bar bracket to the relocation bracket with the OE hardware (Fig. 2). Torque to 75 ft-lbs.
4. Check all fasteners for proper torque. Check all fasteners after 500 miles.

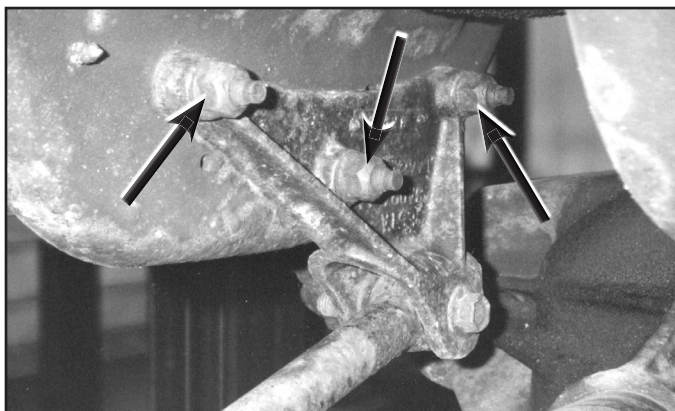


Fig 1

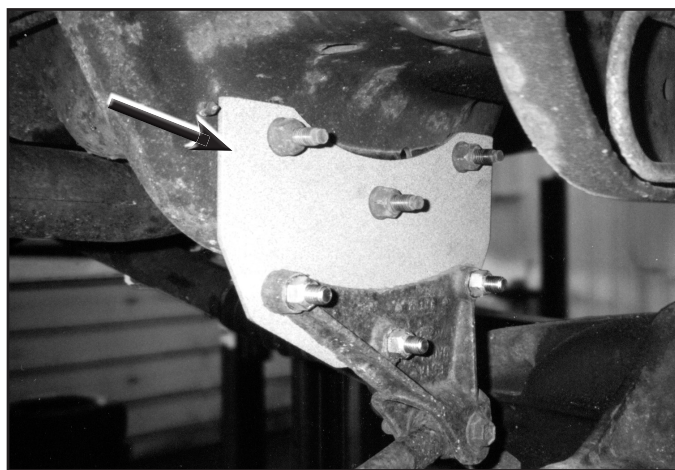


Fig 2