

Rear Shock Relocation

Jeep Wrangler TJ | 1997-2006

Part #: 124009

Rev. 081414



491 W. Garfield Ave., Coldwater, MI 49036 • Phone: 517-279-2135

Web/live chat: www.bds-suspension.com • E-mail: tech@bds-suspension.com

SAFETY WARNING

BDS Suspension Co. recommends this system be installed by a professional technician. In addition to these instructions, professional knowledge of disassembly/ reassembly procedures and post installation checks must be known.

INSTALLATION INSTRUCTIONS

1. Park the vehicle on a clean, flat surface and block the rear wheels for safety.
2. Disconnect the rear shocks from the rear axle. Retain hardware.
3. These shock brackets are designed to offset to the outside of the vehicle on both sides for best gas tank and exhaust clearance. Starting with the passenger side, install the bracket so it offsets to the outside of the factory mount (Fig 1).

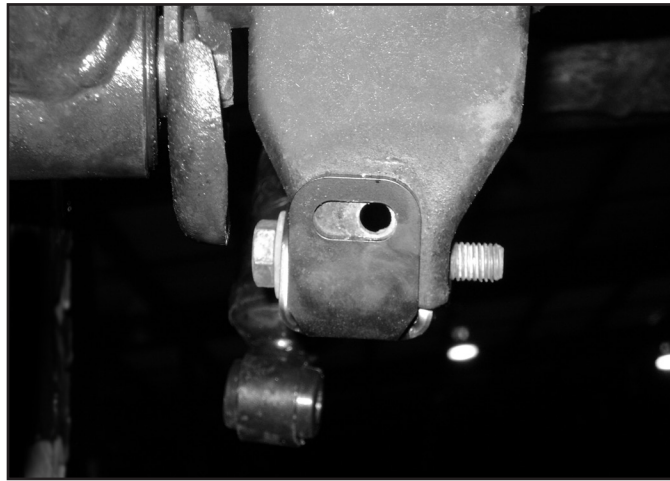
124009 Box Kit		
Part #	Qty	Description
01461	2	Shock Relocation Bracket
125	2	5/8" x 1-1/4" Sleeve
712	1	Bolt Pack
	2	12mm x 65mm bolt
	2	12mm prevailing torque nut
	4	1/2" SAE washer
	2	3/8" x 1" bolt
	2	3/8" prevailing torque nut
	4	3/8" SAE washer

FIGURE 1 - PASSENGER SIDE



4. Loosely install the shock relocation bracket in the OE mount to locate the existing hole that lines up with the slot in the new bracket (Fig 2). Verify the provided 3/8 hardware will fit through the bracket and hole in the axle. If necessary, remove the bracket and drill the factory hole to 7/16".

FIGURE 2- PASSENGER SIDE



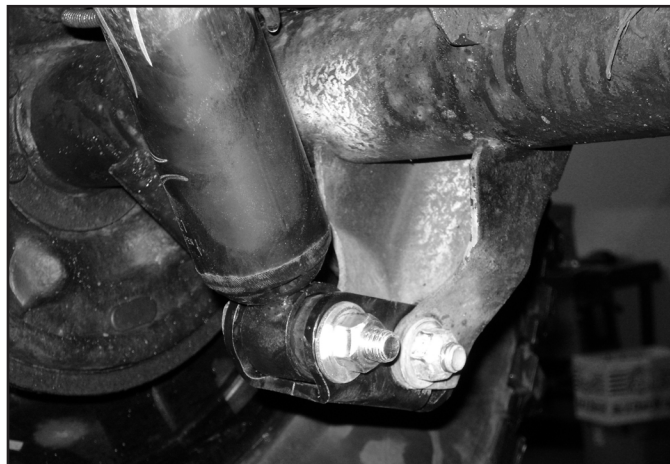
5. Loosely install the relocation bracket to the factory mount with OE shock hardware and provided sleeve (125) through the original shock mounting hole.
 6. Attach the bracket with the provided 3/8" hardware (BP712) through the hole in the OE mount and slot in the bracket. Torque to 30 ft-lbs.
- Figure 3

FIGURE 3 PASSENGER SIDE



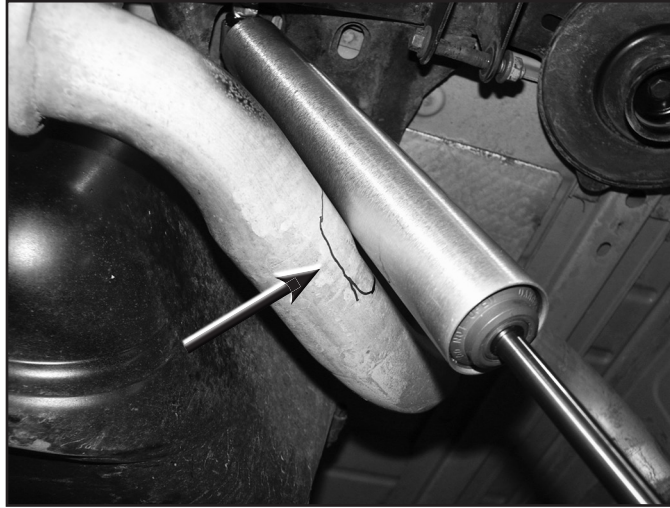
7. Repeat installation on the driver's side, again with the relocation bracket offset to the outside.
8. Install the shocks in the relocation brackets with the provided 12mm bolts, washers, and nuts. (BP712). Torque the factory bolts to 50 ft-lbs and new 12mm bolts to 50 ft-lbs.

FIGURE 4 - DRIVER SIDE



9. On the passenger's side, check for clearance between the rear shock and exhaust tail pipe. This clearance varies from vehicle to vehicle and depends heavily on the rotation of the axle, which is dictated by the pinion angle setup. Mark the area if there is a clearance issue (Fig 5). The exhaust can be rerouted or reworked to clear the shock properly.

FIGURE 5



10. Check all hardware for proper torque.
11. Check hardware after 500 miles.

TIME TO HAVE SOME FUN

Thank you for choosing BDS Suspension.

For questions, technical support and warranty issues relating to this BDS Suspension product, please contact your distributor/installer before contacting BDS Suspension directly.