

Front Adjustable Track Bar | 0-4.5" Lift

2018-2020 Jeep Wrangler JL & 2020 Jeep Gladiator JT

Part #: 124453

Rev. 020922



491 W. Garfield Ave., Coldwater, MI 49036 • Phone: 517-279-2135

Web: www.bds-suspension.com • E-mail: tech-bds@ridefox.com

SAFETY WARNING

BDS Suspension Co. recommends this system be installed by a professional technician. In addition to these instructions, professional knowledge of disassembly/ reassembly procedures and post installation checks must be known.

INSTALLATION INSTRUCTIONS

1. Park vehicle on clean flat and level surface. Block the rear wheels for safety.
2. Loosen the two bolts holding the factory front track bar on the vehicle. Remove the factory track bar, retain hardware for installation of new trackbar.
3. Thread the hex adjustment collar all the way in. Then, thread out the axle end one turn.
4. Install the new track bar on the vehicle, installing frame side first. Ensure the gusset plate on the axle side is on top.



Tip

The preferred method to aligning the axle side bolt is to have an assistant turn the steering wheel in small increments to shift the chassis. If working by yourself, a ratchet strap can be used.

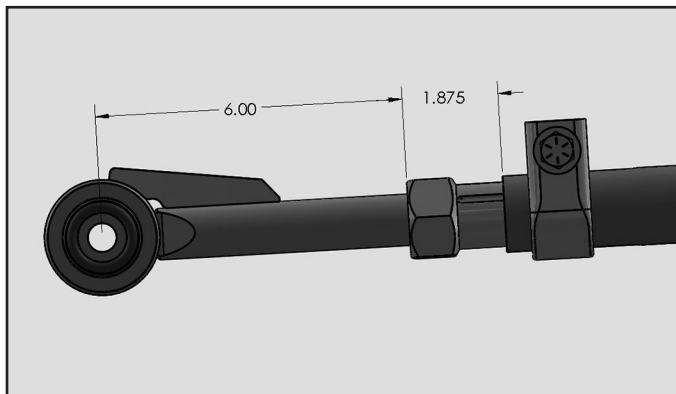
5. Set the length of the track bar by turning the hex adjustment collar. If necessary, a 1-1/2" wrench or accessory BDS129601 can be used. For reference, the factory length is 33-5/8" measured from eye to eye. A good starting point for 3" of lift is 34". Make adjustments as necessary to center the axle from side to side.



Caution

In order to ensure proper thread engagement, do not extend the axle side bushing past 6", and do not extend the hex adjustment collar past 1-7/8". Reference figure 1 below.

FIGURE 1

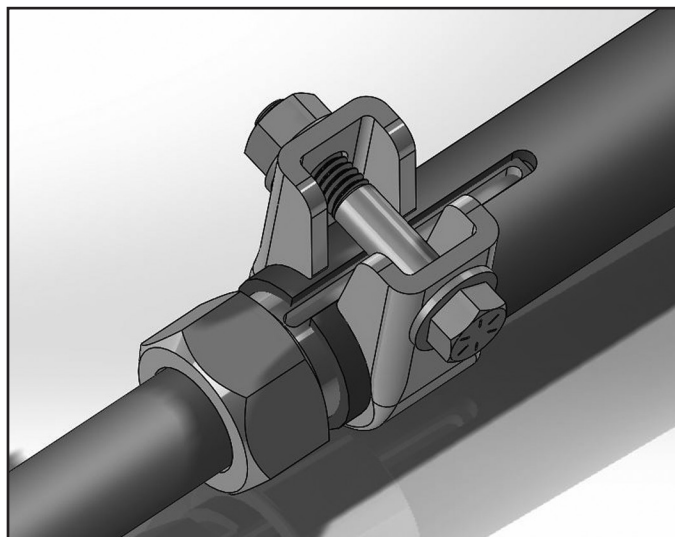


124453 Box Kit

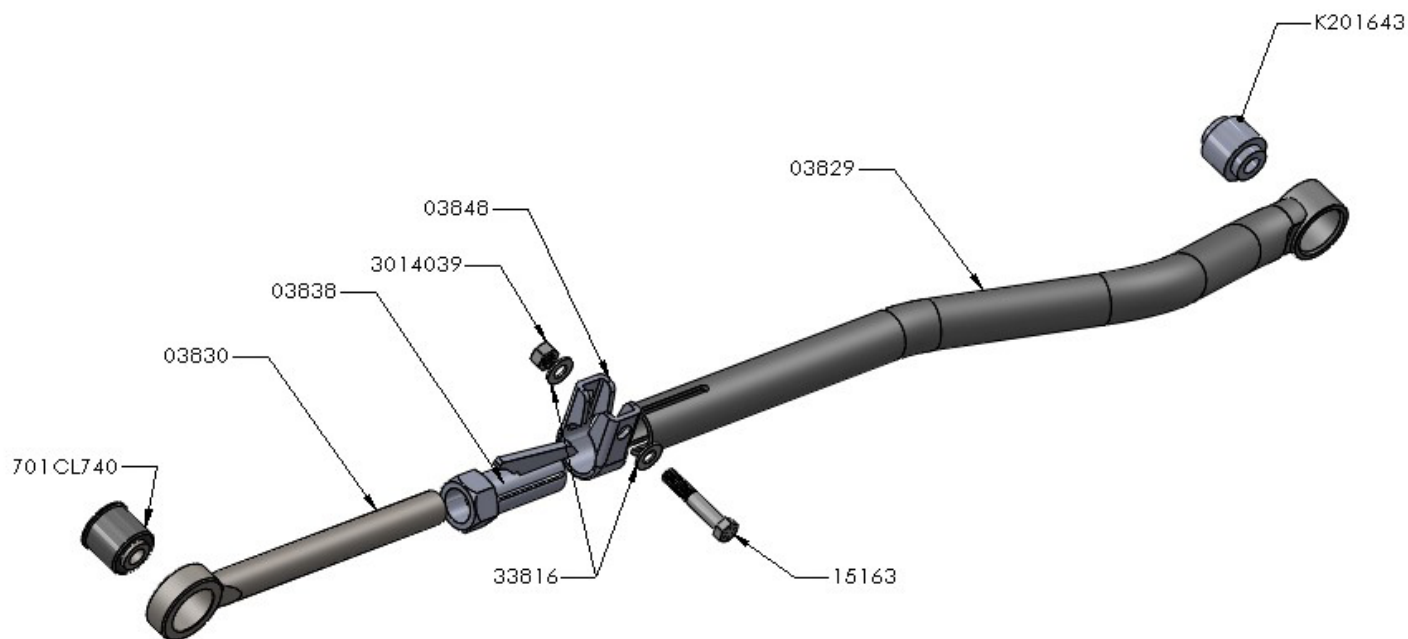
Part #	Qty	Description
A356	1	Adjustable Track Bar Assembly
03830	1	Adjustable Track Bar - Axle End
03829	1	Adjustable Track Bar - Frame End
03838	1	Hex Adjustment Collar
03848	1	Clamp
K201643	1	COM Bearing
MB01B701740	1	Rubber Bushing
15163	1	7/16" x 2.5" Bolt
33816	2	7/16" Flat Washer
3014039	1	7/16" Lock nut

6. Ensure that the clamp is located 1/2" from the end of the tube, facing up. This is to avoid contact with other suspension/ steering components. Also ensure that the clamp is centered upon the slit on the end of the tube. Both the slit on the tube and the slit on the hex adjustment collar must be perfectly aligned. This is illustrated in figure 2 below.

FIGURE 2



7. Using a 5/8" socket and 11/16" wrench, tighten the pinch bolt to 40 ft-lbs.
8. Tighten trackbar mounting hardware to the proper torque specifications, 125 ft-lbs on the frame end and 121 ft-lbs on the axle end.
9. Recheck all hardware, check again at regular maintenance intervals.



TIME TO HAVE SOME FUN

Thank you for choosing BDS Suspension.

For questions, technical support and warranty issues relating to this BDS Suspension product, please contact your distributor/installer before contacting BDS Suspension directly.



WE WANT TO SEE YOUR RIDE!

Grab photos of your BDS-equipped truck in action and send them in for a chance to be featured. Send it in to our Bad Ass Rides customer gallery at bds-suspension.com/bar and post them on the BDS Fan Page on Facebook at facebook.com/BDSSuspensions. Don't forget about your BDS swag! BDS offers t-shirts, hoodies, decals and more available on the BDS website or through your local BDS distributor.