

Adjustable Track Bar

Ford Superduty | 2017-2023

Part #: 123203

Rev. 051723



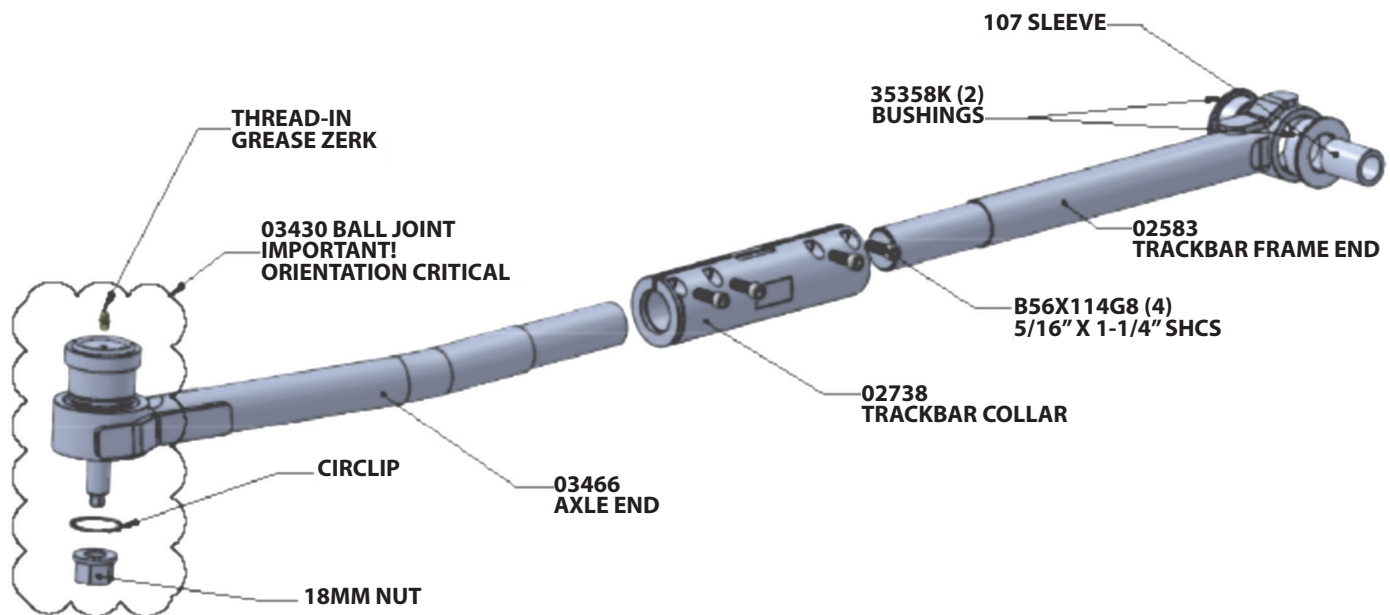
491 W. Garfield Ave., Coldwater, MI 49036 • Phone: 517-279-2135

Web: www.bds-suspension.com • E-mail: tech-bds@ridefox.com

Box Kit		
Part #	Qty	Description
A291	1	Track Bar Assembly
02583	1	Track Bar - Frame End
03466	1	Track Bar - Axle End w/ Ball Joint
02738	1	Adjuster
B1068	1	Adjustable Track Bar Bag Kit
3535BK	2	Bushing
107	1	Sleeve
B56X114G8	4	Bolt
	1	Thread Locker

SAFETY WARNING

BDS Suspension Co. recommends this system be installed by a professional technician. In addition to these instructions, professional knowledge of disassembly/ reassembly procedures and post installation checks must be known.

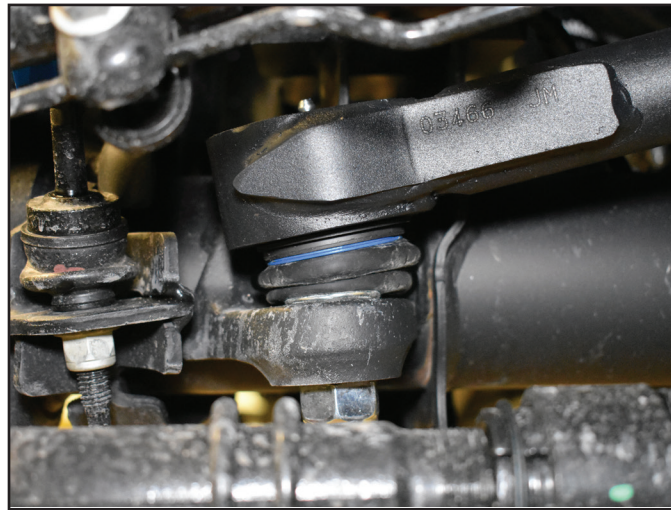


INSTALLATION INSTRUCTIONS

NOTE: Kit is to be used with 2"-4" of lift with OEM trackbar bracket and stock pitman arm, or can be used with 4"-8" of lift in combination with a trackbar drop bracket and dropped pitman arm. Do not use at lift heights above 4" with the factory trackbar bracket, or over 8" of lift.

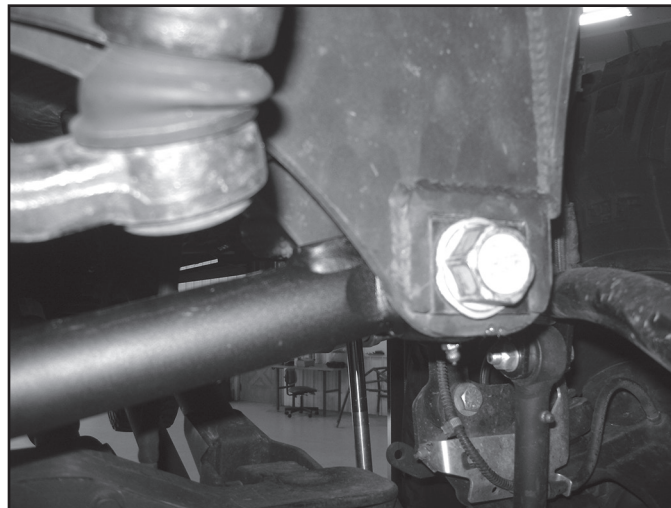
1. Park vehicle on clean, flat, and level surface. Block wheels for safety.
2. Remove the track bar ball joint nut at the axle. Reinstall the nut a couple of turns to prevent damage to OE trackbar joint threads. Use an appropriate puller (small pitman arm puller works in most cases) to dislodge the taper from the axle bracket.
3. Remove the stock track bar. If this is used in conjunction with a BDS lift kit with replacement trackbar bracket, save the cam plates. Retain all hardware.
4. Grease and install bushings and sleeves into track bar. Thread grease zerk into track bar.
5. Adjust the track bar length (eye to eye) to 37-1/8" for 2-1/2" lift, 37-1/2" for 4" lift.
6. Attach the trackbar to the axle bracket first. Attach with new 18mm nut. Swing the trackbar up to the frame end and check for clearance at the axle end between the new trackbar gusset and the axle gussets. It may be necessary to grind the axle gussets for clearance. Once clearance is verified, tighten 18mm ball joint nut to 185 ft-lbs. (Fig 1)

FIGURE 1



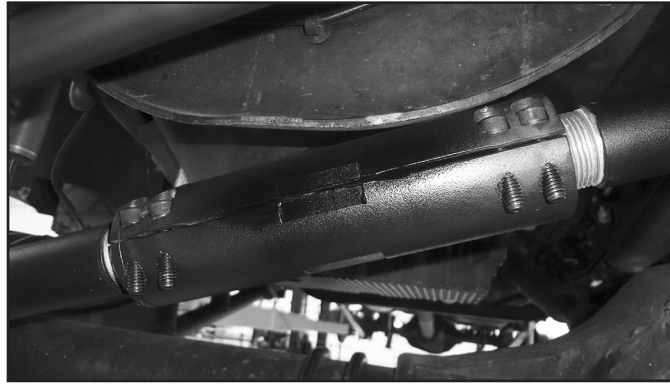
7. Install track bar into vehicle with the grease fitting facing down at the frame mount with factory bolt. Use cam plates if equipped with 4" or larger BDS lift. Snug the trackbar at this time, final torque will be performed later. (Fig 2)

FIGURE 2



8. Ensure the axle is square under the vehicle. Additional adjustment of the track bar collar may be required. Check the trackbar collar to frame crossmember for adequate clearance. A small amount of grinding on the frame crossmember lip may be required for clearance to the trackbar under compression clearance. (Fig 3)

FIGURE 3



9. Check that the ball joint is square with even spacing at the axle. Rotate forward / backward as necessary to get the joint to be square.
10. Remove the 4 allen bolts on the trackbar collar and apply thread locker to the threads, reinstall into trackbar.
11. First, tighten pinch bolts on track bar left-to-right at 30 ft-lbs.
12. Repeat left-to-right torque sequence at 30 ft-lbs until all pinch bolts meet 30 ft-lbs specification.
13. Tighten track bar hardware at the frame to 405 ft-lbs. Grease the track bar mount at the frame.
14. An alignment is highly recommended to re-center the steering wheel. It is possible for the installer to do this by adjusting the drag link collar near the axle. Do not drive models for extended periods of time with the steering wheel off center or adverse traction control and / or Vehicle Collision Avoidance issues may arise.
15. Grease bushings and recheck hardware after 500 miles and at regularly scheduled maintenance intervals.



WE WANT TO SEE YOUR RIDE!

Grab photos of your BDS-equipped truck in action and send them in for a chance to be featured. Send it in to our Bad Ass Rides customer gallery at bds-suspension.com/bar and post them on the BDS Fan Page on Facebook at facebook.com/BDSSuspensions. Don't forget about your BDS swag! BDS offers t-shirts, hoodies, decals and more available on the BDS website or through your local BDS distributor.

TIME TO HAVE SOME FUN

Thank you for choosing BDS Suspension.

For questions, technical support and warranty issues relating to this BDS Suspension product, please contact your distributor/installer before contacting BDS Suspension directly.