



491 W. Garfield Ave., Coldwater, MI 49036

Phone: 517-279-2135

Web/live chat: [www.bds-suspension.com](http://www.bds-suspension.com)

E-mail: [tech-bds@ridefox.com](mailto:tech-bds@ridefox.com)

Part#: 124349, 124447


## Rear Adjustable Flex Upper Control Arms

Jeep Wrangler TJ, Jeep Grand Cherokee ZJ


READ AND UNDERSTAND ALL INSTRUCTIONS AND WARNINGS PRIOR TO INSTALLATION OF SYSTEM AND OPERATION OF VEHICLE.


## INSTALLATION INSTRUCTIONS

1. Park the vehicle on a clean, flat surface and block the front wheels for safety.
2. Raise the rear of the vehicle and support with jack stands under the frame rails just ahead of the lower control arm mounts.
3. Remove wheels.

 Note: Step 3 is not necessary, but will allow easier access to the work area.

4. Disconnect the brake lines from the factory upper control arms. Retain fasteners.
5. Support the rear axle near the pinion with a hydraulic jack.
6. Disconnect the upper control arms from the frame and axle. Remove the arms from the vehicle and retain the nut tabs and bolts from the frame mounts.
7. Adjust the arms to the desired length. Lengthening the arms will increase the pinion angle.

 Note: Factory Length is 13-1/4". Be sure that both the driver's and passenger's arms are identical length.

8.  **Rubber Bushing Arms Only (124445) Steps 8-9:** Due to the larger 12mm mounting bolts at the axle, the square holes will also need to be enlarged. Using a 31/64" drill or rotary grinder enlarge the square holes to fit the larger hardware (Figure 1).

 Note: It may be necessary to disconnect the sway bar from the links to allow enough room for the drill.

## PARTS LIST

Part #	Qty	Description
<b>124349</b>		
A178	1	Rear Adjustable UCA w/ Rubber Bushings - Drv
A179	1	Rear Adjustable UCA w/ Rubber Bushings - Pass
941	1	Bolt Pack
	2	12mm x 80mm bolt
	2	12mm-1.75 lock nut
	4	12mm flat washer
<b>124447</b>		
A213	1	Rear Adjustable UCA-Drv w/ grease fitting hole
A215	1	Rear Adjustable UCA-Pass w/ grease fitting hole
3538BK	4	Poly bushing
67	2	3/4" x 2" Sleeve
60107	2	90 deg grease fitting

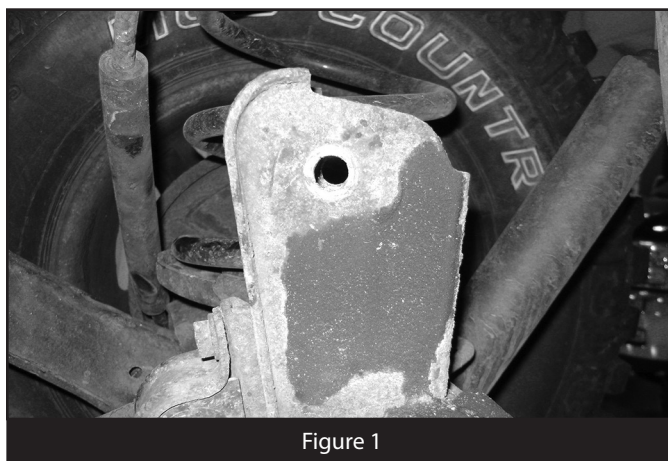

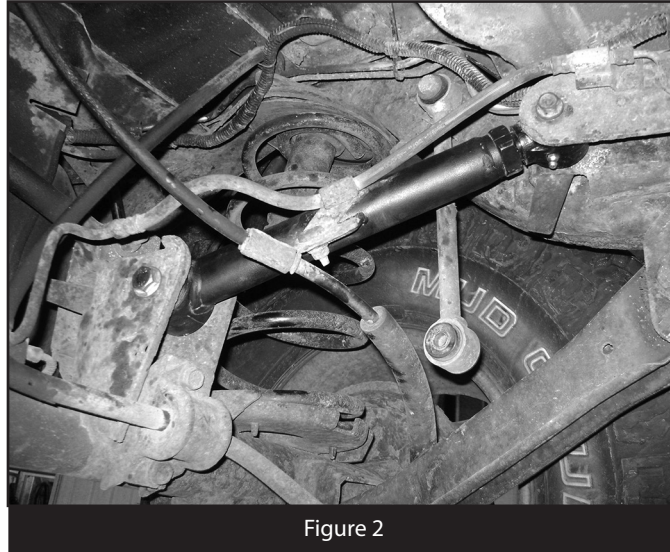


Figure 1

9. The arms should be installed so that the brake line tabs are pointing in toward the center of the vehicle and slightly down toward the ground (Figure 2). The adjustable flex end will mount in the frame pocket with the grease fitting pointing down. Install the driver's and passenger's arms to the frame and axle using the 12mm hardware (BP 941). Leave hardware loose. Note: The pinion can be rotated up or down to aid in aligning the control arm mounting holes. It is recommended to install the axle side first.
10.  Poly Bushing Arms Only (124446) Steps 10-11: Coat the provided bushings and sleeves with a thin layer of grease and install them in the new control arms. Install the provided grease fittings in the threaded holes. The heads of the fittings should point toward the body of the arm.
11. The arms should be installed so that the brake line tabs are pointing in toward the center of the vehicle and slightly down toward the ground (Figure 2). The adjustable flex end will mount in the frame pocket with the grease fitting pointing down. Install the driver's and passenger's arms with the OE hardware. Leave hardware loose. Note: The pinion can be rotated up or down to aid in aligning the control arm mounting holes. It is recommended to install the axle side first.



12. Torque frame mounting bolts to 35 ft-lbs.
13. Re-install the brake lines to the control arm tabs with the factory hardware.
14. If removed, reattach the sway bar links to the sway bar.
15. If removed, install the wheels and lower the vehicle to the ground.
16. Bounce the rear of the vehicle to settle the suspension.
17. Torque the 12mm control arm bolts at the axle to 60 ft-lbs.
18. Tighten the jam nuts.
19. Grease the upper flex ends with lithium based grease.
20. Check all hardware after 500 miles and after any offroad use.
21. Grease control arm bushings at every regularly scheduled service.

---

## NOTICE TO DEALER/INSTALLER

These instructions, the warning card, and included decals must be given to the owner of this BDS Suspension product.

---

For questions, technical support and warranty issues relating to this BDS Suspension product, please contact your distributor/installer before contacting BDS Suspension directly.

Sold/Installed by: