



Department  
for Education

# **Supporting pupils at school with medical conditions**

**Statutory guidance for governing bodies  
of maintained schools and proprietors of  
academies in England**

**April 2014**

# Contents

Summary	3
Introduction	5
The role of governing bodies, proprietors and management committees	7
Developing the school's policy	8
Policy implementation	8
Procedure to be followed when notification is received that a pupil has a medical condition	8
Individual healthcare plans	9
Roles and responsibilities	11
Staff training and support	14
The child's role in managing their own medical needs	15
Managing medicines on school premises	16
Record keeping	17
Emergency procedures	17
Day trips, residential visits and sporting activities	18
Other issues for consideration	18
Unacceptable practice	19
Liability and indemnity	19
Complaints	20
Further sources of information	21
Other safeguarding legislation	21
Other relevant legislation	22
Associated resources	22
Annex A: Model process for developing individual healthcare plans	23

# Summary

## About this guidance

This document contains both statutory guidance and non-statutory advice.

The statutory guidance applies to any “appropriate authority” as defined in section 100 of the Children and Families Act 2014. That means governing bodies in the case of maintained schools, proprietors in the case of academies and management committees in the case of pupil referral units (PRUs).

Statutory guidance is set out in **bold** text, and “appropriate authorities” **must** have regard to<sup>1</sup> this when carrying out their statutory duty to make arrangements to support pupils at school with medical conditions. The guidance also applies to activities taking place off-site as part of normal educational activities. **In this document, references to schools are taken to include academies and PRUs and references to governing bodies include proprietors in academies and management committees of PRUs.**

The rest of the text is non-statutory advice to other persons or bodies who may have a role in helping to support pupils at school with medical conditions.

Early years settings should continue to apply the [Statutory Framework for the Early Years Foundation Stage](#).

This document replaces previous guidance on Managing medicines in schools and early years settings published in March 2005.

## Expiry or review date

This document will be reviewed in September 2015.

## What legislation is this guidance issued under?

Section 100 of the **Children and Families Act 2014 places a duty on** governing bodies of maintained schools, proprietors of academies and management committees of PRUs to make arrangements for supporting pupils at their school with medical conditions.

In meeting the duty, the governing body, proprietor or management committee **must** have regard to<sup>1</sup> guidance issued by the Secretary of State under this section. Section 100 will come into force on 1 September 2014.

---

<sup>1</sup> This means to take account of the guidance and to carefully consider it. Having done so, there would need to be a good reason to justify not complying with it.

## Who is this guidance for?

The statutory sections of this guidance apply to:

- governing bodies of maintained schools (excluding maintained nursery schools)
- management committees of PRUs
- proprietors of academies, including alternative provision academies (not including 16-19 academies)

The non-statutory advice is provided to assist and guide:

- schools, academies, (including alternative provision academies), and PRUs
- local authorities
- clinical commissioning groups (CCGs), NHS England
- anyone who has an interest in promoting the wellbeing and academic attainment of children with medical conditions, including alternative provision, eg independent schools
- parents/carers<sup>2</sup> and pupils
- health service providers

## Key points

- Pupils at school with medical conditions should be properly supported so that they have full access to education, including school trips and physical education.
- Governing bodies **must** ensure that arrangements are in place in schools to support pupils at school with medical conditions.
- Governing bodies should ensure that school leaders consult health and social care professionals, pupils and parents to ensure that the needs of children with medical conditions are effectively supported.

---

<sup>2</sup> All further references to a parent or parents also includes a carer or carers

## Introduction

1. On 1 September 2014 a new duty will come into force for governing bodies to make arrangements to support pupils at school with medical conditions. The statutory guidance in this document is intended to help governing bodies meet their legal responsibilities and sets out the arrangements they will be expected to make, based on good practice. The aim is to ensure that all children with medical conditions, in terms of both physical and mental health, are properly supported in school so that they can play a full and active role in school life, remain healthy and achieve their academic potential.

2. Parents of children with medical conditions are often concerned that their child's health will deteriorate when they attend school. This is because pupils with long-term and complex medical conditions may require on-going support, medicines or care while at school to help them manage their condition and keep them well. Others may require monitoring and interventions in emergency circumstances. It is also the case that children's health needs may change over time, in ways that cannot always be predicted, sometimes resulting in extended absences. It is therefore important that parents feel confident that schools will provide effective support for their child's medical condition and that pupils feel safe. In making decisions about the support they provide, schools should establish relationships with relevant local health services to help them. It is crucial that schools receive and fully consider advice from healthcare professionals and listen to and value the views of parents and pupils.

3. In addition to the educational impacts, there are social and emotional implications associated with medical conditions. Children may be self-conscious about their condition and some may be bullied or develop emotional disorders such as anxiety or depression around their medical condition. In particular, long-term absences due to health problems affect children's educational attainment, impact on their ability to integrate with their peers and affect their general wellbeing and emotional health. Reintegration back into school should be properly supported so that children with medical conditions fully engage with learning and do not fall behind when they are unable to attend. Short term and frequent absences, including those for appointments connected with a pupil's medical condition, (which can often be lengthy), also need to be effectively managed and appropriate support put in place to limit the impact on the child's educational attainment and emotional and general wellbeing.

4. Some children with medical conditions may be disabled. Where this is the case governing bodies **must** comply with their duties under the Equality Act 2010. Some may also have special educational needs (SEN) and may have a statement, or Education, Health and Care (EHC) plan which brings together health and social care needs, as well

as their special educational provision. For children with SEN, this guidance should be read in conjunction with the SEN code of practice<sup>3</sup>.

---

<sup>3</sup> Available at [GOV.UK](https://www.gov.uk)

## The role of governing bodies, proprietors and management committees

5. In meeting the duty to make arrangements to support pupils with medical conditions, functions can be conferred on a governor, a headteacher, a committee or other member of staff as appropriate. Help and cooperation can also be enlisted from other appropriate persons. We expect that an approach to meeting the duty will be taken in light of the statutory guidance. This will inform the school and others about what needs to be done in terms of implementation. However, the governing body, proprietor or management committee remains legally responsible and accountable for fulfilling their statutory duty.

6. **The governing body<sup>4</sup> must ensure that arrangements are in place to support pupils with medical conditions. In doing so they should ensure that such children can access and enjoy the same opportunities at school as any other child.** Schools, local authorities, health professionals and other support services should work together to ensure that children with medical conditions receive a full education. In some cases this will require flexibility and involve, for example, programmes of study that rely on part time attendance at school in combination with alternative provision arranged by the local authority<sup>5</sup>. Consideration may also be given to how children will be reintegrated back into school after periods of absence.

7. **In making their arrangements, governing bodies should take into account that many of the medical conditions that require support at school will affect quality of life and may be life-threatening. Some will be more obvious than others. Governing bodies should therefore ensure that the focus is on the needs of each individual child and how their medical condition impacts on their school life.**

8. **The governing body should ensure that their arrangements give parents and pupils confidence in the school's ability to provide effective support for medical conditions in school. The arrangements should show an understanding of how medical conditions impact on a child's ability to learn, as well as increase their confidence and promote self-care. They should ensure that staff are properly trained to provide the support that pupils need.**

9. Children and young people with medical conditions are entitled to a full education and have the same rights of admission to school as other children. This means that no child with a medical condition should be denied admission<sup>6</sup> or prevented from taking up a place in school because arrangements for their medical condition have not been made.

---

<sup>4</sup> In this document, references to governing body includes proprietors in academies and management committees of PRUs

<sup>5</sup> All children must receive a full time education, unless this would not be in their best interests because of their health needs

<sup>6</sup> See School Admissions Code 2012

However, in line with their safeguarding duties, governing bodies should ensure that pupils' health is not put at unnecessary risk from, for example infectious diseases. They therefore do not have to accept a child in school at times where it would be detrimental to the health of that child or others to do so.

10. **Governing bodies must ensure that the arrangements they put in place are sufficient to meet their statutory responsibilities and should ensure that policies, plans, procedures and systems are properly and effectively implemented.** This aligns with their wider safeguarding duties.

## Developing the school's policy

11. **Governing bodies should ensure that all schools develop a policy for supporting pupils with medical conditions that is reviewed regularly and is readily accessible to parents and school staff.** In developing their policy, schools may wish to seek advice from any relevant healthcare professionals.

## Policy implementation

12. **Governing bodies should ensure that the arrangements they set up include details on how the school's policy will be implemented effectively, including a named person who has overall responsibility for policy implementation.** Details should include:

- who is responsible for ensuring that sufficient staff are suitably trained,
- a commitment that all relevant staff will be made aware of the child's condition,
- cover arrangements in case of staff absence or staff turnover to ensure someone is always available,
- briefing for supply teachers,
- risk assessments for school visits, holidays, and other school activities outside of the normal timetable, and
- monitoring of individual healthcare plans.

## Procedure to be followed when notification is received that a pupil has a medical condition

13. **Governing bodies should ensure that the school's policy sets out the procedures to be followed whenever a school is notified that a pupil has a medical condition.** Procedures should also be in place to cover any transitional arrangements



between schools, the process to be followed upon reintegration or when pupil's needs change, and arrangements for any staff training or support. For children starting at a new school, arrangements should be in place in time for the start of the relevant school term. In other cases, such as a new diagnosis or children moving to a new school mid-term, every effort should be made to ensure that arrangements are put in place within two weeks.

14. Schools do not have to wait for a formal diagnosis before providing support to pupils. In cases where a pupil's medical condition is unclear, or where there is a difference of opinion, judgements will be needed about what support to provide based on the available evidence. This would normally involve some form of medical evidence and consultation with parents. Where evidence conflicts, some degree of challenge may be necessary to ensure that the right support can be put in place.

## Individual healthcare plans

15. **Governing bodies should ensure that the school's policy covers the role of individual healthcare plans, and who is responsible for their development, in supporting pupils at school with medical conditions.** Individual healthcare plans can help to ensure that schools effectively support pupils with medical conditions. They provide clarity about what needs to be done, when and by whom. They will often be essential, such as in cases where conditions fluctuate or where there is a high risk that emergency intervention will be needed, and are likely to be helpful in the majority of other cases, especially where medical conditions are long-term and complex. However, not all children will require one. The school, healthcare professional and parent should agree, based on evidence, when a healthcare plan would be inappropriate or disproportionate. If consensus cannot be reached, the headteacher is best placed to take a final view. A flow chart for identifying and agreeing the support a child needs and developing an individual healthcare plan is provided at annex A.

16. The format of individual healthcare plans may vary to enable schools to choose whichever is the most effective for the specific needs of each pupil. They should be easily accessible to all who need to refer to them, while preserving confidentiality. Plans should not be a burden on a school, but should capture the key information and actions that are required to support the child effectively. The level of detail within plans will depend on the complexity of the child's condition and the degree of support needed. This is important because different children with the same health condition may require very different support. Where a child has SEN but does not have a statement or EHC plan, their special educational needs should be mentioned in their individual healthcare plan.

17. Individual healthcare plans, (and their review), may be initiated, in consultation with the parent, by a member of school staff or a healthcare professional involved in providing care to the child. Plans should be drawn up in partnership between the school,

parents, and a relevant healthcare professional, eg school, specialist or children's community nurse, who can best advise on the particular needs of the child. Pupils should also be involved whenever appropriate. The aim should be to capture the steps which a school should take to help the child manage their condition and overcome any potential barriers to getting the most from their education. Partners should agree who will take the lead in writing the plan, but responsibility for ensuring it is finalised and implemented rests with the school. **The governing body should ensure that plans are reviewed at least annually or earlier if evidence is presented that the child's needs have changed. They should be developed with the child's best interests in mind and ensure that the school assesses and manages risks to the child's education, health and social well-being and minimises disruption.** Where the child has a special educational need identified in a statement or EHC plan, the individual healthcare plan should be linked to or become part of that statement or EHC plan.

18. Where a child is returning to school following a period of hospital education or alternative provision (including home tuition), schools should work with the local authority and education provider to ensure that the individual healthcare plan identifies the support the child will need to reintegrate effectively.

19. **When deciding what information should be recorded on individual healthcare plans, the governing body should consider the following:**

- **the medical condition, its triggers, signs, symptoms and treatments;**
- **the pupil's resulting needs, including medication (dose, side-effects and storage) and other treatments, time, facilities, equipment, testing, access to food and drink where this is used to manage their condition, dietary requirements and environmental issues eg crowded corridors, travel time between lessons;**
- **specific support for the pupil's educational, social and emotional needs – for example, how absences will be managed, requirements for extra time to complete exams, use of rest periods or additional support in catching up with lessons, counselling sessions;**
- **the level of support needed, (some children will be able to take responsibility for their own health needs), including in emergencies. If a child is self-managing their medication, this should be clearly stated with appropriate arrangements for monitoring;**
- **who will provide this support, their training needs, expectations of their role and confirmation of proficiency to provide support for the child's medical condition from a healthcare professional; and cover arrangements for when they are unavailable;**

- who in the school needs to be aware of the child's condition and the support required;
- arrangements for written permission from parents and the headteacher for medication to be administered by a member of staff, or self-administered by the pupil during school hours;
- separate arrangements or procedures required for school trips or other school activities outside of the normal school timetable that will ensure the child can participate, eg risk assessments;
- where confidentiality issues are raised by the parent/child, the designated individuals to be entrusted with information about the child's condition; and
- what to do in an emergency, including whom to contact, and contingency arrangements. Some children may have an emergency healthcare plan prepared by their lead clinician that could be used to inform development of their individual healthcare plan.

## Roles and responsibilities

20. **The governing body should ensure that the school's policy clearly identifies the roles and responsibilities of all those involved in the arrangements they make to support pupils at school with medical conditions.**

21. Supporting a child with a medical condition during school hours is not the sole responsibility of one person. A school's ability to provide effective support will depend to an appreciable extent on working cooperatively with other agencies. Partnership working between school staff, healthcare professionals (and where appropriate, social care professionals), local authorities, and parents and pupils will be critical. An essential requirement for any policy therefore will be to identify collaborative working arrangements between all those involved, showing how they will work in partnership to ensure that the needs of pupils with medical conditions are met effectively.

22. Some of the most important roles and responsibilities are listed below, but schools may additionally want to cover a wider range of people in their policy.

- **Governing bodies - must make arrangements to support pupils with medical conditions in school, including making sure that a policy for supporting pupils with medical conditions in school is developed and implemented.** They should ensure that a pupil with medical conditions is supported to enable the fullest participation possible in all aspects of school life. **Governing bodies should ensure that sufficient staff have received suitable training and are competent before they take on responsibility to support children with**

**medical conditions.** They should also ensure that any members of school staff who provide support to pupils with medical conditions are able to access information and other teaching support materials as needed.

- Headteachers – should ensure that their school’s policy is developed and effectively implemented with partners. This includes ensuring that all staff are aware of the policy for supporting pupils with medical conditions and understand their role in its implementation. Headteachers should ensure that all staff who need to know are aware of the child’s condition. They should also ensure that sufficient trained numbers of staff are available to implement the policy and deliver against all individual healthcare plans, including in contingency and emergency situations. This may involve recruiting a member of staff for this purpose. Headteachers have overall responsibility for the development of individual healthcare plans. They should also make sure that school staff are appropriately insured and are aware that they are insured to support pupils in this way. They should contact the school nursing service in the case of any child who has a medical condition that may require support at school, but who has not yet been brought to the attention of the school nurse.
- School staff - any member of school staff may be asked to provide support to pupils with medical conditions, including the administering of medicines, although they cannot be required to do so. Although administering medicines is not part of teachers’ professional duties, they should take into account the needs of pupils with medical conditions that they teach. School staff should receive sufficient and suitable training and achieve the necessary level of competency before they take on responsibility to support children with medical conditions. Any member of school staff should know what to do and respond accordingly when they become aware that a pupil with a medical condition needs help.
- School nurses - every school has access to school nursing services. They are responsible for notifying the school when a child has been identified as having a medical condition which will require support in school. Wherever possible, they should do this before the child starts at the school. They would not usually have an extensive role in ensuring that schools are taking appropriate steps to support children with medical conditions, but may support staff on implementing a child’s individual healthcare plan and provide advice and liaison, for example on training. School nurses can liaise with lead clinicians locally on appropriate support for the child and associated staff training needs – for example there are good models of local specialist nursing teams offering training to local school staff, hosted by a local school. Community nursing teams will also be a valuable potential resource for a school seeking advice and support in relation to children with a medical condition. See also paragraphs 23 to 31 below about training for school staff.

- Other healthcare professionals, including GPs and paediatricians - should notify the school nurse when a child has been identified as having a medical condition that will require support at school. They may provide advice on developing healthcare plans. Specialist local health teams may be able to provide support in schools for children with particular conditions (eg asthma, diabetes).
- Pupils – with medical conditions will often be best placed to provide information about how their condition affects them. They should be fully involved in discussions about their medical support needs and contribute as much as possible to the development of, and comply with, their individual healthcare plan. Other pupils will often be sensitive to the needs of those with medical conditions.
- Parents – should provide the school with sufficient and up-to-date information about their child’s medical needs. They may in some cases be the first to notify the school that their child has a medical condition. Parents are key partners and should be involved in the development and review of their child’s individual healthcare plan, and may be involved in its drafting. They should carry out any action they have agreed to as part of its implementation, eg provide medicines and equipment and ensure they or another nominated adult are contactable at all times.
- Local authorities – are commissioners of school nurses for maintained schools and academies. Under Section 10 of the Children Act 2004, they have a duty to promote cooperation between relevant partners such as governing bodies of maintained schools, proprietors of academies, clinical commissioning groups and NHS England, with a view to improving the well-being of children so far as relating to their physical and mental health, and their education, training and recreation. Local authorities should provide support, advice and guidance, including suitable training for school staff, to ensure that the support specified within individual healthcare plans can be delivered effectively. Local authorities should work with schools to support pupils with medical conditions to attend full time. Where pupils would not receive a suitable education in a mainstream school because of their health needs, the local authority has a duty to make other arrangements. Statutory guidance for local authorities sets out that they should be ready to make arrangements under this duty when it is clear that a child will be away from schools for 15 days or more because of health needs (whether consecutive or cumulative across the school year)<sup>7</sup>.
- Providers of health services - should co-operate with schools that are supporting children with a medical condition, including appropriate communication, liaison

---

<sup>7</sup> Local authorities must have regard to statutory guidance on the education of children unable to attend school because of health needs. This guidance is available on [GOV.UK](https://www.gov.uk)

with school nurses and other healthcare professionals such as specialist and children's community nurses, as well as participation in locally developed outreach and training. Health services can provide valuable support, information, advice and guidance to schools, and their staff, to support children with medical conditions at school.

- Clinical commissioning groups (CCGs) – commission other healthcare professionals such as specialist nurses. They should ensure that commissioning is responsive to children's needs, and that health services are able to co-operate with schools supporting children with medical conditions. They have a reciprocal duty to cooperate under Section 10 of the Children Act 2004 (as described above for local authorities). Clinical commissioning groups should be responsive to local authorities and schools seeking to strengthen links between health services and schools, and consider how to encourage health services in providing support and advice, (and can help with any potential issues or obstacles in relation to this). The local Health and Wellbeing Board will also provide a forum for local authorities and CCGs to consider with other partners, including locally elected representatives, how to strengthen links between education, health and care settings.
- Ofsted - their inspection framework places a clear emphasis on meeting the needs of disabled children and pupils with SEN, and considering the quality of teaching and the progress made by these pupils. Inspectors are already briefed to consider the needs of pupils with chronic or long-term medical conditions alongside these groups and to report on how well their needs are being met. Schools are expected to have a policy dealing with medical needs and to be able to demonstrate that this is implemented effectively.

## **Staff training and support**

**23. Governing bodies should ensure that the school's policy sets out clearly how staff will be supported in carrying out their role to support pupils with medical conditions, and how this will be reviewed. This should specify how training needs are assessed, and how and by whom training will be commissioned and provided.**

**24. The school's policy should be clear that any member of school staff providing support to a pupil with medical needs should have received suitable training.** This should have been identified during the development or review of individual healthcare plans. Some staff may already have some knowledge of the specific support needed by a child with a medical condition and so extensive training may not be required. Staff who provide support to pupils with medical conditions should be included in meetings where this is discussed.

**25. The relevant healthcare professional should normally lead on identifying and agreeing with the school, the type and level of training required, and how this can be**

obtained. Schools may choose to arrange training themselves and should ensure this remains up-to-date.

26. Training should be sufficient to ensure that staff are competent and have confidence in their ability to support pupils with medical conditions, and to fulfil the requirements as set out in individual healthcare plans. They will need an understanding of the specific medical conditions they are being asked to deal with, their implications and preventative measures.

27. **Staff must not give prescription medicines or undertake health care procedures without appropriate training (updated to reflect any individual healthcare plans).** A first-aid certificate does not constitute appropriate training in supporting children with medical conditions.

28. Healthcare professionals, including the school nurse, can provide confirmation of the proficiency of staff in a medical procedure, or in providing medication.

29. The school's policy should additionally set out arrangements for whole school awareness training so that all staff are aware of the school's policy for supporting pupils with medical conditions and their role in implementing that policy. Induction arrangements for new staff should be included. The relevant healthcare professional should be able to advise on training that will help ensure that all medical conditions affecting pupils in the school are understood fully. This includes preventative and emergency measures so that staff can recognise and act quickly when a problem occurs.

30. The family of a child will often be key in providing relevant information to school staff about how their child's needs can be met, and parents should be asked for their views. They should provide specific advice, but should not be the sole trainer.

31. Governing bodies should consider providing details of continuing professional development provision opportunities.

## **The child's role in managing their own medical needs**

32. **Governing bodies should ensure that the school's policy covers arrangements for children who are competent to manage their own health needs and medicines.** After discussion with parents, children who are competent should be encouraged to take responsibility for managing their own medicines and procedures. This should be reflected within individual healthcare plans.

33. Wherever possible, children should be allowed to carry their own medicines and relevant devices or should be able to access their medicines for self-medication quickly and easily. Children who can take their medicines themselves or manage procedures may require an appropriate level of supervision. If it is not appropriate for a child to self-

manage, then relevant staff should help to administer medicines and manage procedures for them.

34. If a child refuses to take medicine or carry out a necessary procedure, staff should not force them to do so, but follow the procedure agreed in the individual healthcare plan. Parents should be informed so that alternative options can be considered.

## Managing medicines on school premises

35. **The governing body should ensure that the school's policy is clear about the procedures to be followed for managing medicines.** Although schools may already have such procedures in place, they should reflect the following details:

- medicines should only be administered at school when it would be detrimental to a child's health or school attendance not to do so
- no child under 16 should be given prescription or non-prescription medicines without their parent's written consent - except in exceptional circumstances where the medicine has been prescribed to the child without the knowledge of the parents. In such cases, every effort should be made to encourage the child or young person to involve their parents while respecting their right to confidentiality. Schools should set out the circumstances in which non-prescription medicines may be administered
- a child under 16 should never be given medicine containing aspirin unless prescribed by a doctor. Medication, eg for pain relief, should never be administered without first checking maximum dosages and when the previous dose was taken. Parents should be informed
- where clinically possible, medicines should be prescribed in dose frequencies which enable them to be taken outside school hours
- schools should only accept prescribed medicines that are in-date, labelled, provided in the original container as dispensed by a pharmacist and include instructions for administration, dosage and storage. The exception to this is insulin which must still be in date, but will generally be available to schools inside an insulin pen or a pump, rather than in its original container
- all medicines should be stored safely. Children should know where their medicines are at all times and be able to access them immediately. Where relevant, they should know who holds the key to the storage facility. Medicines and devices such as asthma inhalers, blood glucose testing meters and adrenaline pens should be always readily available to children and not locked away. This is particularly important to consider when outside of school premises eg on school trips



- a child who has been prescribed a controlled drug may legally have it in their possession if they are competent to do so, but passing it to another child for use is an offence. Monitoring arrangements may be necessary. Schools should otherwise keep controlled drugs that have been prescribed for a pupil securely stored in a non-portable container and only named staff should have access. Controlled drugs should be easily accessible in an emergency. A record should be kept of any doses used and the amount of the controlled drug held in school
- school staff may administer a controlled drug to the child for whom it has been prescribed. Staff administering medicines should do so in accordance with the prescriber's instructions. Schools should keep a record of all medicines administered to individual children, stating what, how and how much was administered, when and by whom. Any side effects of the medication to be administered at school should be noted
- when no longer required, medicines should be returned to the parent to arrange for safe disposal. Sharps boxes should always be used for the disposal of needles and other sharps

## Record keeping

36. **Governing bodies should ensure that written records are kept of all medicines administered to children.** Records offer protection to staff and children and provide evidence that agreed procedures have been followed. Parents should be informed if their child has been unwell at school.

## Emergency procedures

37. **Governing bodies should ensure that the school's policy sets out what should happen in an emergency situation.** As part of general risk management processes, all schools should have arrangements in place for dealing with emergencies.

38. Where a child has an individual healthcare plan, this should clearly define what constitutes an emergency and explain what to do, including ensuring that all relevant staff are aware of emergency symptoms and procedures. Other pupils in the school should know what to do in general terms, such as informing a teacher immediately if they think help is needed.

39. If a child needs to be taken to hospital, staff should stay with the child until the parent arrives, or accompany a child taken to hospital by ambulance. Schools need to ensure they understand the local emergency services cover arrangements and that the correct information is provided for navigation systems.

## Day trips, residential visits and sporting activities

40. **Governing bodies should ensure that their arrangements are clear and unambiguous about the need to support actively pupils with medical conditions to participate in school trips and visits, or in sporting activities, and not prevent them from doing so.** Teachers should be aware of how a child's medical condition will impact on their participation, but there should be enough flexibility for all children to participate according to their own abilities and with any reasonable adjustments. Schools should make arrangements for the inclusion of pupils in such activities with any adjustments as required unless evidence from a clinician such as a GP states that this is not possible.

41. Schools should consider what reasonable adjustments they might make to enable children with medical needs to participate fully and safely on visits. It is best practice to carry out a risk assessment so that planning arrangements take account of any steps needed to ensure that pupils with medical conditions are included. This will require consultation with parents and pupils and advice from the relevant healthcare professional to ensure that pupils can participate safely. Please also see Health and Safety Executive (HSE) guidance on school trips.

## Other issues for consideration

42. Governing bodies may want the school's policy to refer to:

- home to school transport – this is the responsibility of local authorities, who may find it helpful to be aware of a pupil's individual healthcare plan and what it contains, especially in respect of emergency situations. This may be helpful in developing transport healthcare plans<sup>8</sup> for pupils with life threatening conditions;
- defibrillators – sudden cardiac arrest is when the heart stops beating and can happen to people at any age and without warning. When it does happen, quick action (in the form of early CPR and defibrillation) can help save lives. A defibrillator is a machine used to give an electric shock to restart a patient's heart when they are in cardiac arrest. Modern defibrillators are easy to use, inexpensive and safe. Schools are advised to consider purchasing a defibrillator as part of their first aid equipment. If schools install a defibrillator for general use they should notify the local NHS ambulance service of its location. Staff members appointed as first aiders should already be trained in the use of CPR and may wish to promote these techniques more widely in the school, amongst both teachers and pupils alike; and
- asthma inhalers – once regulations are changed, schools will be able to hold asthma inhalers for emergency use. This is entirely voluntary, and the

---

<sup>8</sup> These are separate to the individual healthcare plans referred to throughout this document

Department of Health is producing a protocol which will provide further information.

## Unacceptable practice

43. **Governing bodies should ensure that the school's policy is explicit about what practice is not acceptable.** Although school staff should use their discretion and judge each case on its merits with reference to the child's individual healthcare plan, it is not generally acceptable practice to:

- prevent children from easily accessing their inhalers and medication and administering their medication when and where necessary;
- assume that every child with the same condition requires the same treatment;
- ignore the views of the child or their parents; or ignore medical evidence or opinion, (although this may be challenged);
- send children with medical conditions home frequently or prevent them from staying for normal school activities, including lunch, unless this is specified in their individual healthcare plans;
- if the child becomes ill, send them to the school office or medical room unaccompanied or with someone unsuitable;
- penalise children for their attendance record if their absences are related to their medical condition eg hospital appointments;
- prevent pupils from drinking, eating or taking toilet or other breaks whenever they need to in order to manage their medical condition effectively;
- require parents, or otherwise make them feel obliged, to attend school to administer medication or provide medical support to their child, including with toileting issues. No parent should have to give up working because the school is failing to support their child's medical needs; or
- prevent children from participating, or create unnecessary barriers to children participating in any aspect of school life, including school trips, eg by requiring parents to accompany the child.

## Liability and indemnity

44. **Governing bodies should ensure that the appropriate level of insurance is in place and appropriately reflects the level of risk.** It is important that the school policy sets out the details of the school's insurance arrangements which cover staff providing

support to pupils with medical conditions. Insurance policies should be accessible to staff providing such support.

45. Insurance policies should provide liability cover relating to the administration of medication, but individual cover may need to be arranged for any health care procedures. The level and ambit of cover required must be ascertained directly from the relevant insurers. Any requirements of the insurance such as the need for staff to be trained should be made clear and complied with.

46. In the event of a claim alleging negligence by a member of staff, civil actions are likely to be brought against the employer.

## Complaints

47. **Governing bodies should ensure that the school's policy sets out how complaints may be made and will be handled concerning the support provided to pupils with medical conditions.** Should parents or pupils be dissatisfied with the support provided they should discuss their concerns directly with the school. If for whatever reason this does not resolve the issue, they may make a formal complaint via the school's complaints procedure. Making a formal complaint to the Department for Education should only occur if it comes within scope of section 496/497 of the Education Act 1996 and after other attempts at resolution have been exhausted. In the case of academies, it will be relevant to consider whether the academy has breached the terms of its Funding Agreement<sup>9</sup>, or failed to comply with any other legal obligation placed on it. Ultimately, parents (and pupils) will be able to take independent legal advice and bring formal proceedings if they consider they have legitimate grounds to do so.

---

<sup>9</sup> The contractual relationship between academies and the Department for Education

## Further sources of information

### Other safeguarding legislation

**Section 21 of the Education Act 2002** provides that governing bodies of maintained schools must in discharging their functions in relation to the conduct of the school promote the well-being of pupils at the school.

**Section 175 of the Education Act 2002** provides that governing bodies of maintained schools must make arrangements for ensuring that their functions relating to the conduct of the school are exercised with a view to safeguarding and promoting the welfare of children who are pupils at the school. Paragraph 7 of Schedule 1 to the Independent School Standards (England) Regulations 2010 set this out in relation to academy schools and alternative provision academies.

**Section 3 of the Children Act 1989** provides a duty on a person with the care of a child (who does not have parental responsibility for the child) to do all that is reasonable in all the circumstances for the purposes of safeguarding or promoting the welfare of the child.

**Section 17 of the Children Act 1989** gives local authorities a general duty to safeguard and promote the welfare of children in need in their area.

**Section 10 of the Children Act 2004** provides that the local authority must make arrangements to promote co-operation between the authority and relevant partners (including the governing body of a maintained school, the proprietor of an academy, clinical commissioning groups and the NHS Commissioning Board) with a view to improving the well-being of children, including their physical and mental health, protection from harm and neglect, and education. Relevant partners are under a duty to cooperate in the making of these arrangements.

**The NHS Act 2006: Section 3** gives Clinical Commissioning Groups a duty to arrange for the provision of health services to the extent the CCG considers it necessary to meet the reasonable needs of the persons for whom it's responsible. **Section 3A** provides for a CCG to arrange such services as it considers appropriate to secure improvements in physical and mental health of, and in the prevention, diagnosis and treatment of illness, in the persons for whom it's responsible. **Section 2A** provides for local authorities to secure improvements to public health, and in doing so, to commission school nurses.

Governing Bodies' duties towards disabled children and adults are included in the **Equality Act 2010**, and the key elements are as follows:

- They **must not** discriminate against, harass or victimise disabled children and young people

- They **must** make reasonable adjustments to ensure that disabled children and young people are not at a substantial disadvantage compared with their peers. This duty is anticipatory: adjustments must be planned and put in place in advance, to prevent that disadvantage

## Other relevant legislation

Section 2 of the **Health and Safety at Work Act 1974**, and the associated regulations, provides that it is the duty of the employer (the local authority, governing body or academy trust) to take reasonable steps to ensure that staff and pupils are not exposed to risks to their health and safety.

Under the **Misuse of Drugs Act 1971** and associated Regulations the supply, administration, possession and storage of certain drugs are controlled. Schools may have a child that has been prescribed a controlled drug.

The **Medicines Act 1968** specifies the way that medicines are prescribed, supplied and administered within the UK and places restrictions on dealings with medicinal products, including their administration.

**Regulation 5 of the School Premises (England) Regulations 2012 (as amended)** provide that maintained schools must have accommodation appropriate and readily available for use for medical examination and treatment and for the caring of sick or injured pupils. It **must** contain a washing facility and be reasonably near to a toilet. It **must** not be teaching accommodation. Paragraph 23B of Schedule 1 to the Independent School Standards (England) Regulations 2010 replicates this provision for independent schools (including academy schools and alternative provision academies).

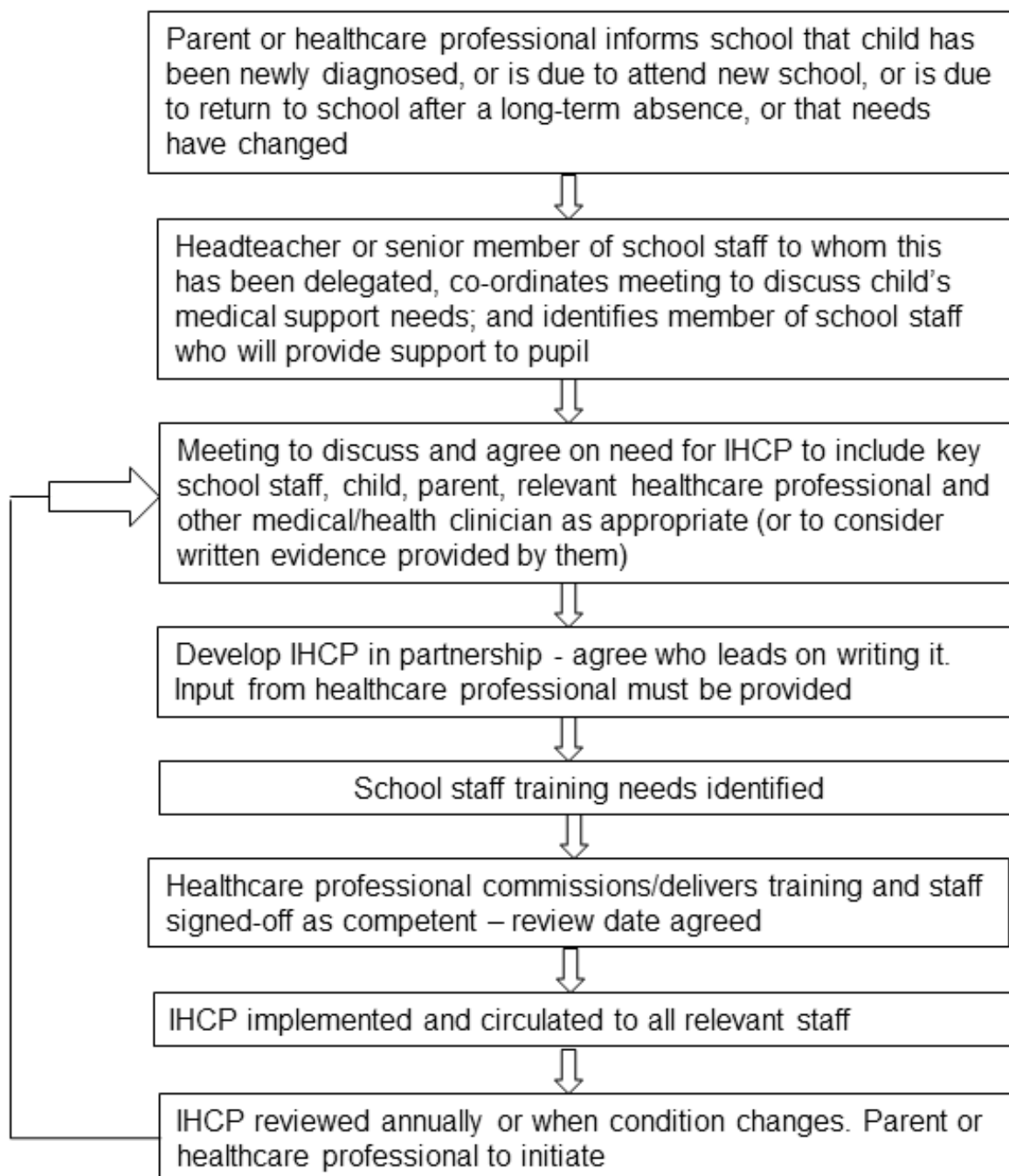
### The Special Educational Needs Code of Practice

**Section 19 of the Education Act 1996** (as amended by Section 3 of the Children Schools and Families Act 2010) provides a duty on local authorities of maintained schools to arrange suitable education for those who would not receive such education unless such arrangements are made for them. This education must be full time, or such part time education as is in a child's best interests because of their health needs.

## Associated resources

Links to other information and associated advice, guidance and resources eg templates and to organisations providing advice and support on specific medical conditions will be provided on the relevant web-pages at [GOV.UK](http://GOV.UK).

## Annex A: Model process for developing individual healthcare plans





Department  
for Education

© Crown copyright 2014

You may re-use this document/publication (not including logos) free of charge in any format or medium, under the terms of the Open Government Licence v2.0. Where we have identified any third party copyright information you will need to obtain permission from the copyright holders concerned.

To view this licence:

visit [www.nationalarchives.gov.uk/doc/open-government-licence/version/2](http://www.nationalarchives.gov.uk/doc/open-government-licence/version/2)

email [psi@nationalarchives.gsi.gov.uk](mailto:psi@nationalarchives.gsi.gov.uk)

About this publication:

enquiries [www.education.gov.uk/contactus](http://www.education.gov.uk/contactus)

download [www.gov.uk/government/publications](http://www.gov.uk/government/publications)

Reference: DFE-00393-2014



Follow us on Twitter:  
[@educationgovuk](https://twitter.com/educationgovuk)



Like us on Facebook:  
[facebook.com/educationgovuk](https://facebook.com/educationgovuk)