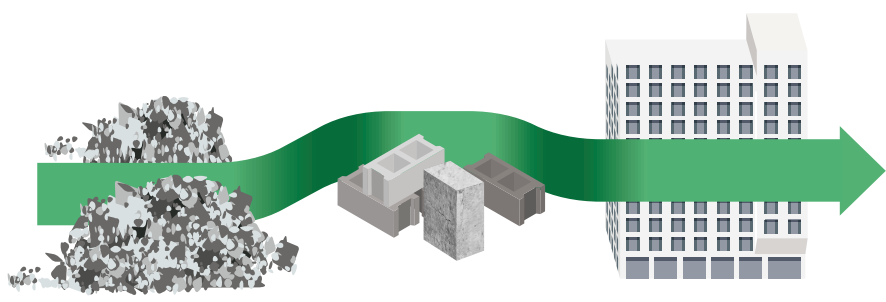


Sustainable & Circular



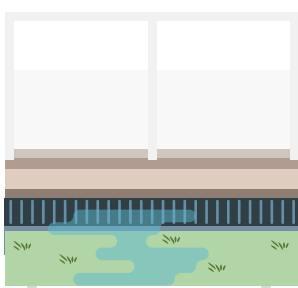
98% of the material after demolition is reused.



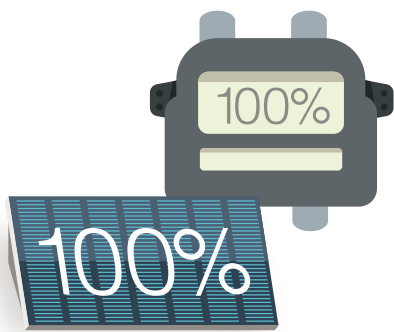
85% of the material after demolition is reused in Bajeskwartier itself.



160 cell doors and 20 isolation cell doors given a new lease of life in picnic tables and bridges.



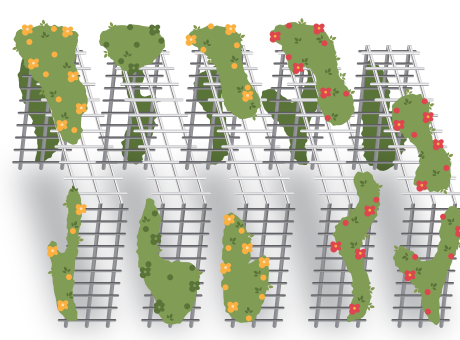
Rainwater is collected and used for such things as watering vegetable gardens.



Energy-neutral & gas-free

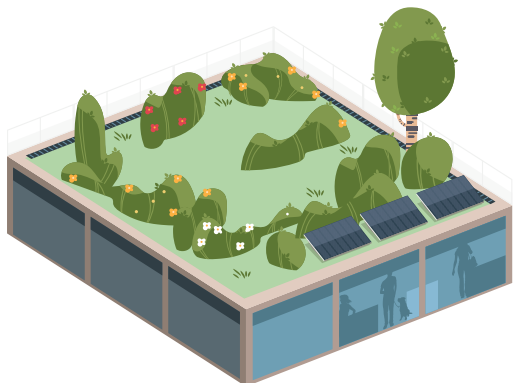


The wooden floor from the gymnasium is used for picnic tables.

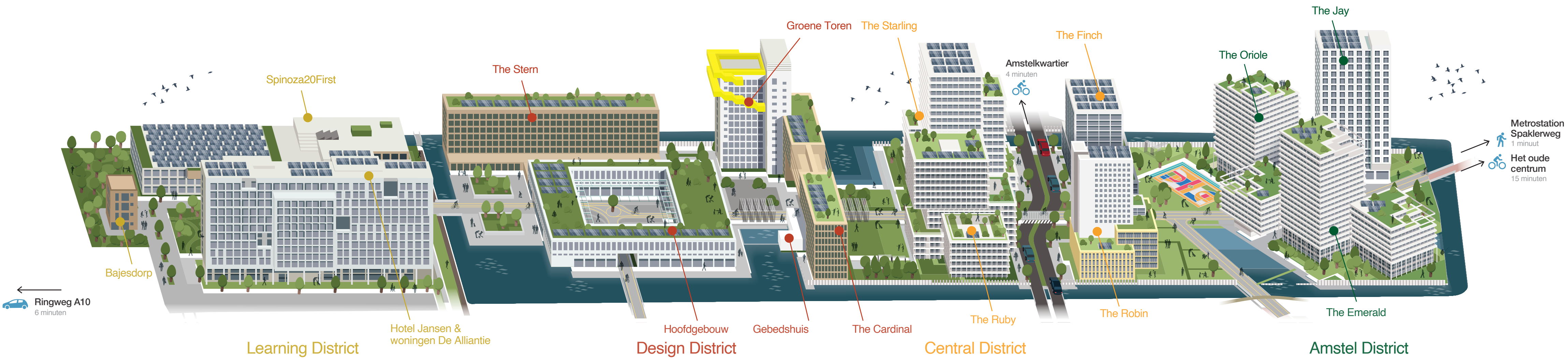


#419

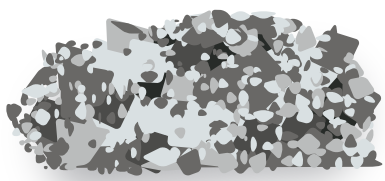
bars are used for a variety of purposes including pergolas and fencing for plants.



Green roofs and external walls contribute to reducing heat stress.



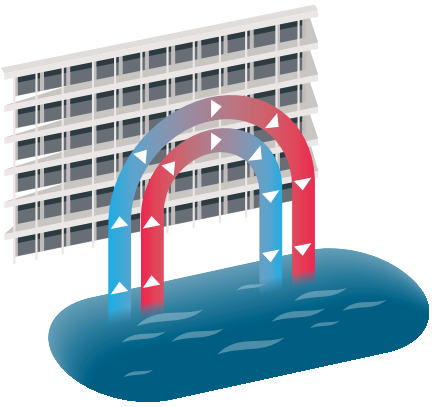
A nature-inclusive district. The plants will filter fine particles and attract birds, insects and bats.



8.300 tonnes of concrete granulate is used in road foundations and for water storage.



Compost from food waste from the district is converted into electricity and heat.



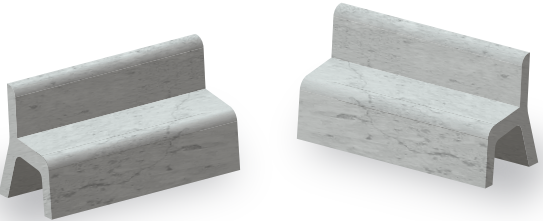
Surface water from the canal is used for heating and cooling homes and buildings.



4 buildings have been retained: the former women's tower, the main building, the church and the boiler house.



3% Car-free district. Only 3% is designated for cars.



12.000 tonnes 'Bajes concrete' Rubble is turned into things such as concrete blocks and benches and used in the public space.



The prison wall will be retained, providing space for insects and nesting sites for birds and bats.