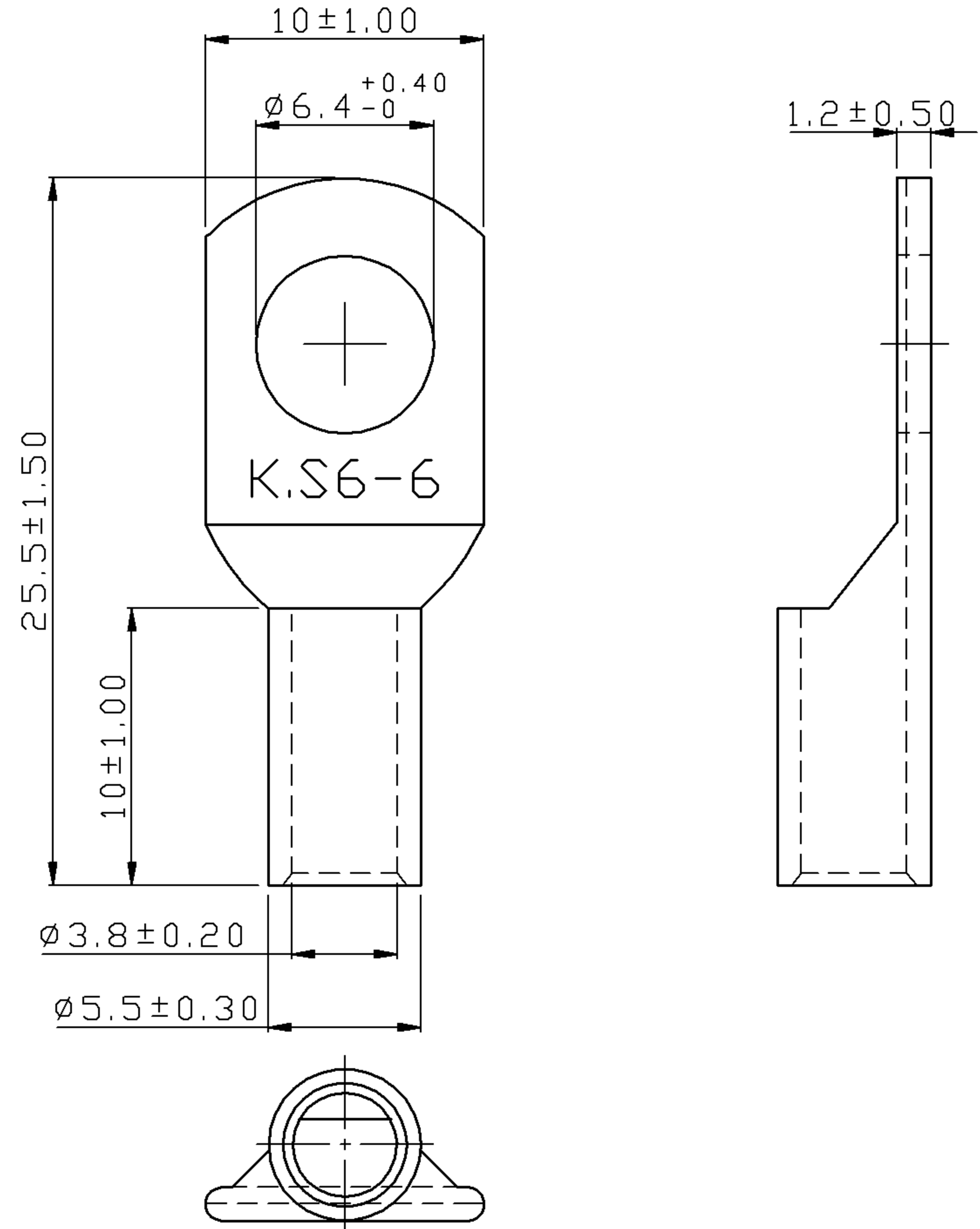


REV	DESCRIPTION	DATE
-----	-------------	------



NOTE :

1. MAXIMUM ELECTRIC CURRENT : 

A.W.G.	12	10	
AMP.	35	50	
2. WIRE RANGE : 12-10 A.W.G. ( 4 - 6 mm<sup>2</sup> )
3. SURFACE TREATMENT : TIN PLATED
4. THICKNESS : 0.85 mm

Tolerance Unless Otherwise Specified	
0 > 6 mm ± 0.20	ANGLE
6 > 18 mm ± 0.30	0° > ° REF ±
18 > 30 mm ± 0.40	° ±
30 > 75 mm ± 0.50	° ±

NAME	NON-INSULATED COPPER TUBULAR LUGS(TL SERIES)			UNIT	
PART NO.	TL6-6	MATERIAL	COPPER TUBULAR	APPROVE	
NUMBER	KT-96187-C	SCALE	SHEET PAGE	CHECKED	
DATE	2008/10/01	3/1	1-0 10F2	DRAWN	張馨尹

**KST. K.S. TERMINALS INC.**