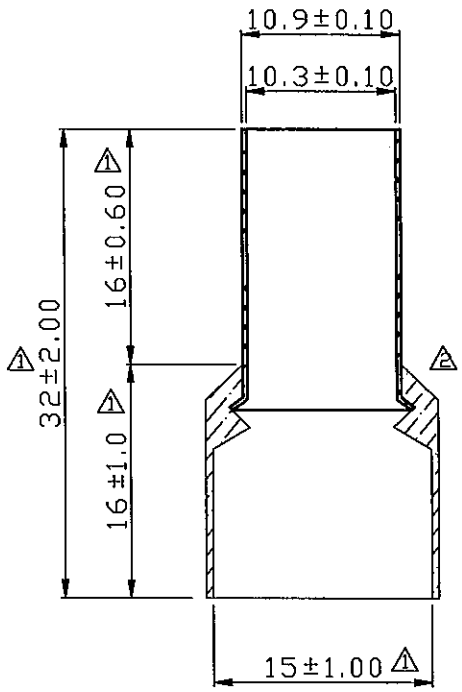
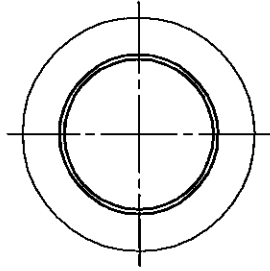


REV	DESCRIPTION	DATE
△	RDK-97163	張馨尹 2008/09/08
△	RDCM-105070	林淑楨 2016/06/06



NOTE:

- MAXIMUM ELECTRIC CURRENT :  $\frac{\text{A.W.G.} | 1/0}{\text{AMP.} | 230}$
- MAXIMUM ELECTRICAL RATING : 105°C 600 VOLTS MAX.
- INSULATION MATERIAL : NYLON
- INSULATION COLOR :  
FRENCH COLOR : BLUE  
GERMAN COLOR : OLIVE  
DIN COLOR : BLUE
- CONNECTOR MATERIAL : COPPER TUBE.
- WIRE RANGE : 1/0 A.W.G.( 50 mm<sup>2</sup>)
- CONNECTOR SURFACE TREATMENT : TIN PLATED

Tolerance Unless Otherwise Specified	
0 >	mm ± 0.50 ANGLE
>	mm ± 0° ° REF ±
>	mm ± ° ° ±
>	mm ± ° ° ±

NAME	NYLON-INSULATED CORD END TERMINALS (E SERIES)			UNIT	mm	
PART NO.	E50-16	MATERIAL	-----	APPROVE		
NUMBER	KA-95460-C	SCALE	SHEET	PAGE	CHECKED	
DATE	2006/05/10	2/1	1-2	10F1	DRAWN	張馨尹

**KST. K.S. TERMINALS INC.**