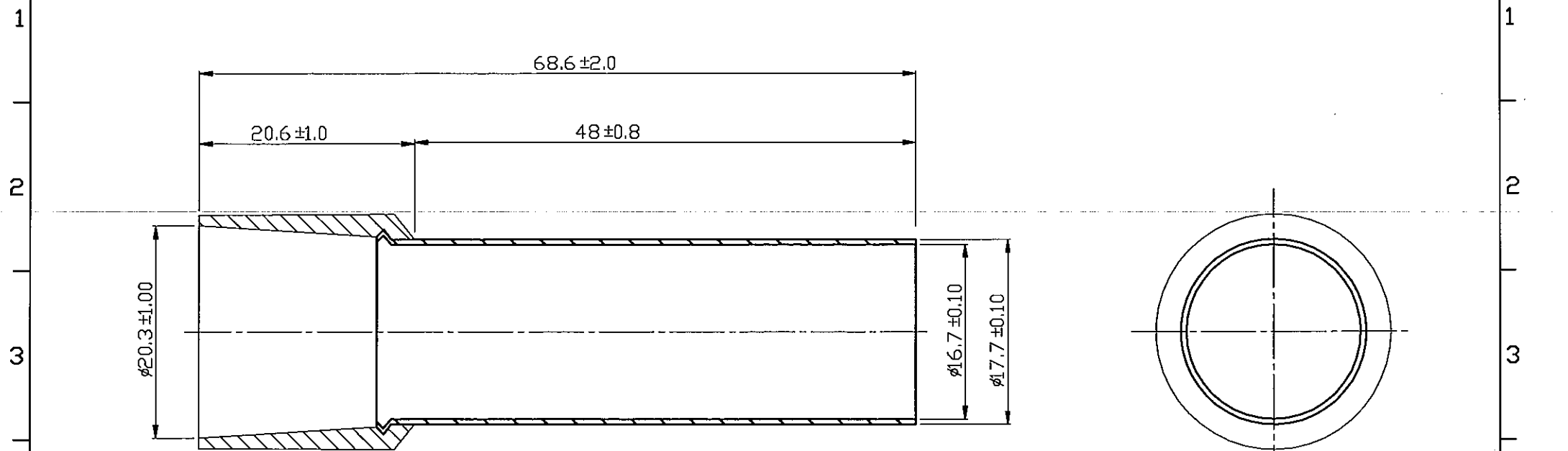


REV	DESCRIPTION	DATE
-----	-------------	------

RD25018-1



- NOTE:
- MAXIMUM ELECTRIC CURRENT : 

A.W.G.	4/0
AMP.	360
  - MAXIMUM ELECTRICAL RATING : 105°C 600 VOLTS MAX.
  - INSULATION MATERIAL : NYLON
  - INSULATION COLOR :  
FRENCH COLOR : BLUE  
GERMAN COLOR : BLUE  
DIN COLOR : BLUE
  - CONNECTOR MATERIAL : COPPER TUBE.
  - WIRE RANGE : 4/0 A.W.G.( 120 mm<sup>2</sup>)
  - CONNECTOR SURFACE TREATMENT : TIN PLATED

Tolerance Unless Otherwise Specified	
0 > 6 mm ± 0.20	ANGLE
6 > 18 mm ± 0.30	0° > ° REF ±
18 > 30 mm ± 0.40	° > ° ±
30 > 75 mm ± 0.50	° > ° ±

NAME	NYLON-INSULATED CORD END TERMINALS (E SERIES)			UNIT	mm	
PART NO.	E120-48	MATERIAL	COPPER	APPROVE		
NUMBER	KA-114008-C	SCALE	REV. SHEET	CHECKED		
DATE	2025/05/07	2/1	1-0	10F1	DRAWN	林佳麗

**KST. K.S. TERMINALS INC.**