



# Moduleo 55 Tiles

As versatile as it gets



---

Brought to you by



“

We offer top-quality products, impeccable service, innovative, sustainable production and a proven track record... But most of all, we love helping to achieve your goals.”



BEYOND FLOORING

## **GH Commercial. Global Flooring Solutions**

GH Commercial is committed to designing, creating and supplying high-quality floorcoverings around the world, with a dedicated focus on Australia and New Zealand. As a group, our market-leading brands cover virtually every aspect of flooring. Our goal is to connect you with the right floor, when, where and how you need it.

As part of the Mohawk family, GH Commercial has global access to products and resources, including the high quality product offering from IVC.

## **About IVC**

IVC is the commercial division of IVC Group, dedicated to creating unique floors for corporate & office, retail, hospitality & leisure, housing, education and healthcare projects. Founded in 1997, IVC Group is Europe's leading manufacturer of carpet tiles, luxury vinyl tiles (LVT) and sheet vinyl.

With 1,600 employees and 10 production units in Belgium, Luxembourg, the United States and Russia, IVC Group produces over 180 million m<sup>2</sup> of flooring per year.



# IVC's promise to you: we go beyond flooring

Making promises is admirable, but keeping them is how we really make a difference. That's why our ambitions are built on five strong pillars.

## 01.

**We're in control from start to finish, from inspiration to installation.**

Our dedicated, professional, multidisciplinary team is at your service. Design, production, delivery, planning... Everything you need under one roof – it doesn't get more convenient than that.

## 02.

**We look beyond the ordinary to create the perfect solution for your project.**

We always consider the materials we use, performance, design, acoustics, comfort, installation and recycling; while keeping your wishes in mind. After all, innovation revolves around you.

## 03.

**We offer versatile product solutions for all your projects.**

Whether you want to design inspiring office spaces, bohemian hotel rooms, a daycare centre, practical educational facilities or any other space you're passionate about; we have a solution to fit your needs.

## 04.

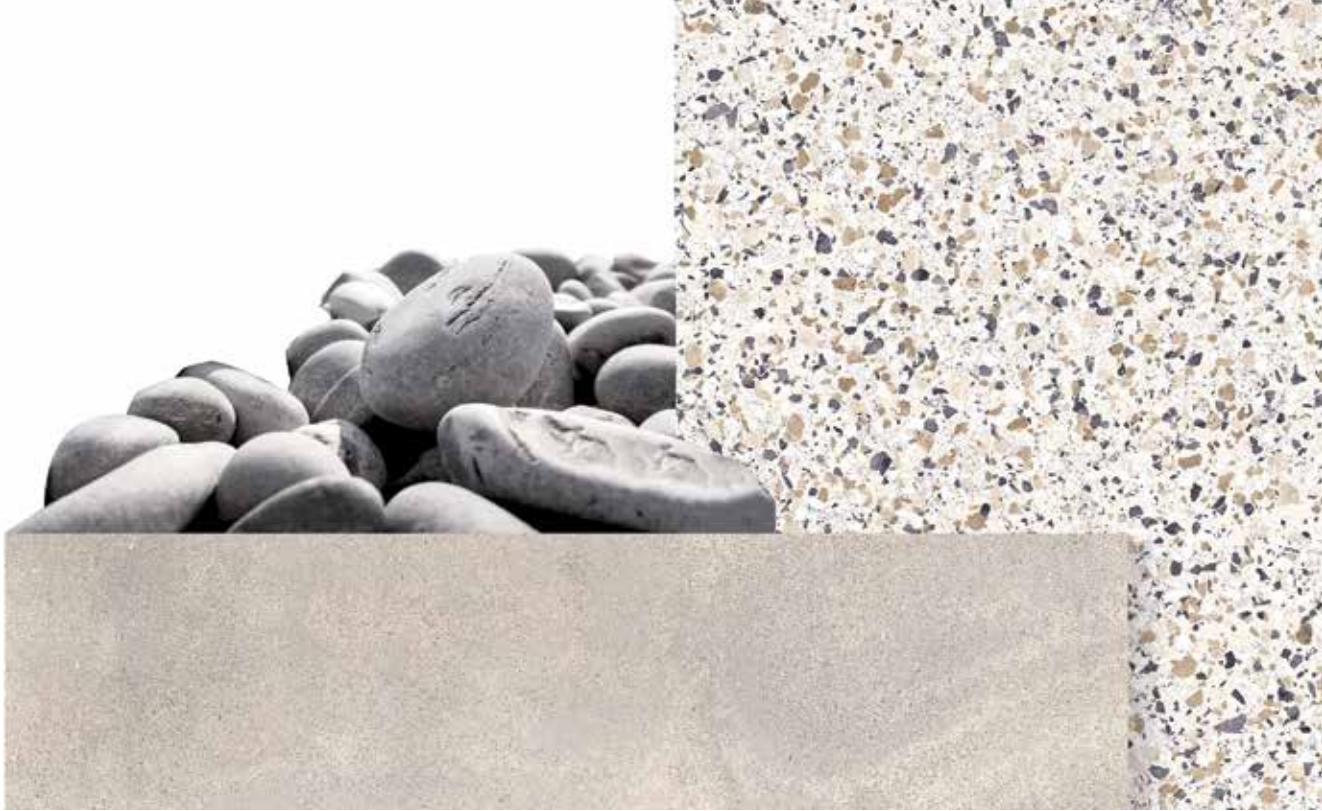
**We have a proven track record in a wide range of sectors.**

We know the specific needs of restaurants, healthcare facilities, shops, offices, schools and multi-occupancy housing, and ensure our unique advantages meet the specific needs of each environment.

## 05.

**In everything we do, we keep the planet in mind.**

We take the time to pause and reflect on the impacts of our entire strategy and operations. Our eco-friendly production sites, recycling efforts, windmills and solar panels are just a few of the ways we pave the way for a better tomorrow.



## Moduleo 55 Tiles: naturally different

Rock-solid and natural, or abstract and creative; with Moduleo 55 Tiles, the choice is yours. The collection offers 52 stone looks in different formats: some mimics stones from all over the world, others inspire those who dare to be different. The result: ultimate design flexibility and creative transitions.

What's more Moduleo 55 Tiles offers a 0.55mm thick scratch, stain, wear and water resistant layer, perfect for medium to high commercial traffic. Rest assured: Moduleo 55 Tiles floors last. That's set in stone.









Moduleo 55 Tiles

# The Collection

---

#01 AZURIET	#05 CONCRETE	#10 JURASTONE
#02 BRUSHED METAL	#06 DESERT CRAYOLA	#11 MYSTO
#03 CEPPO	#07 DESERT STONE	#12 RIVER WOOD
#04 CLOUD STONE	#08 HOOVER STONE	#13 STEEL ROCK
	#09 JERSEY STONE	

---



#01

## AZURIET<sup>L</sup>

Let your interior shine with the effect of beautiful metallic speckling. The light reflection creates the illusion of additional space. A bold statement that makes bright and light spaces even more beautiful.

Azuriet 46919

<sup>L</sup> Lead time: please allow 12-14 weeks.



Azuriet 46148  
329mm x 659mm

LRV 58



Azuriet 46919  
329mm x 659mm

LRV 48



Azuriet 46939  
329mm x 659mm

LRV 37



Azuriet 46860  
329mm x 659mm

LRV 22



Azuriet 46959  
329mm x 659mm

LRV 22

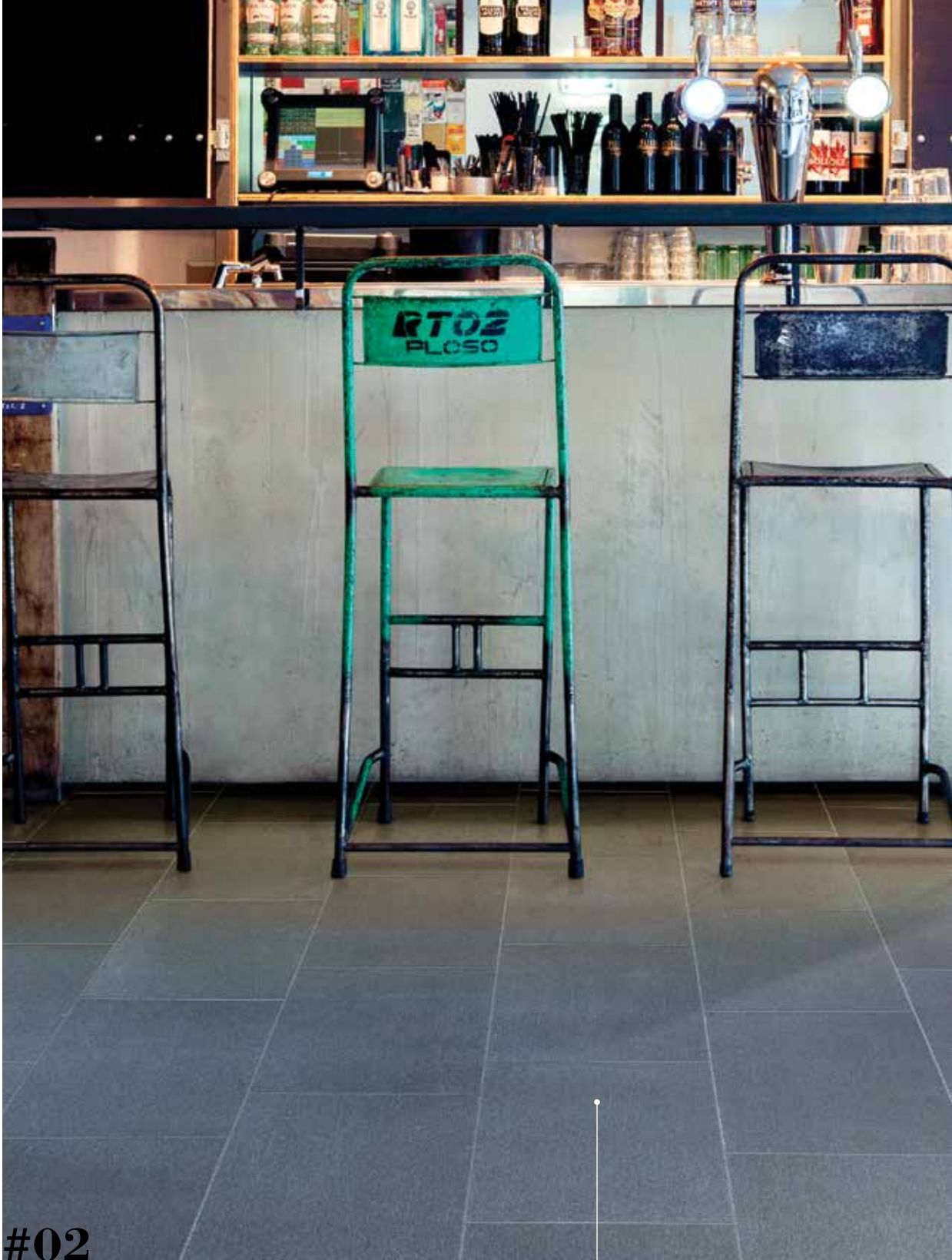


Azuriet 46985  
329mm x 659mm

LRV 10

Glitter effect on all products

LRV : Light Reflectance Value



#02

## BRUSHED METAL <sup>L</sup>

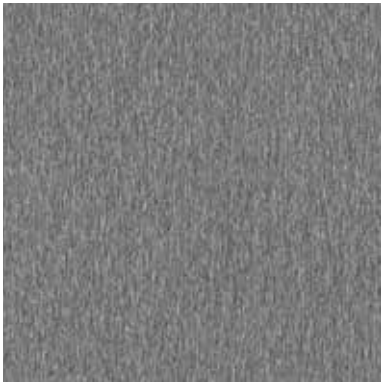
An abstract, contemporary design with a metallic shine, perfect for a modern interior.

Brushed Metal 20950

<sup>L</sup> Lead time: please allow 12-14 weeks.



Brushed Metal 20830 LRV 35  
329mm x 659mm



Brushed Metal 20950 LRV 33  
329mm x 659mm

Metal effect on all products





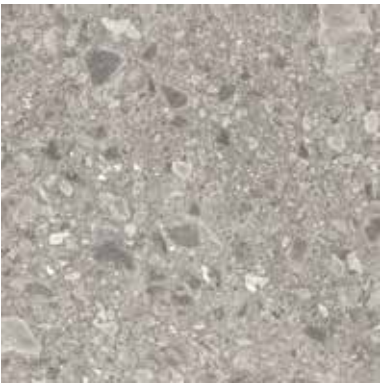
#03

## CEPPO <sup>S</sup>

Combining the natural appeal of beach stones and pebbles, subtle shades of grey allow you to create an interior design space that radiates inner peace and tranquillity: the key to a warm and inviting atmosphere.

Ceppo 40945

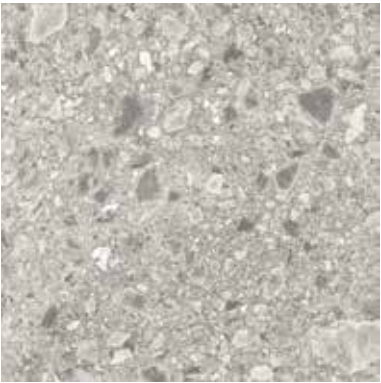
<sup>S</sup> Stocked locally in Australia for a fast turnaround.



Ceppo 46151

LRV 37

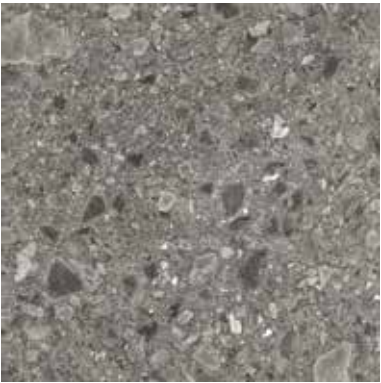
609.6mm x 609.6mm



Ceppo 46921

LRV 31

609.6mm x 609.6mm



Ceppo 46961

LRV 18

609.6mm x 609.6mm



#04

## CLOUD STONE<sup>L</sup>

Reach cloud nine in the stylish space you've designed with this elegant unique stone. The unique and wide pattern variation and multitude of shades create a truly original floor.

Cloud Stone 46134

<sup>L</sup> Lead time: please allow 12-14 weeks.



Cloud Stone 46134  
609.6mm x 609.6mm

LRV 35



Cloud Stone 46244  
609.6mm x 609.6mm

LRV 36



Cloud Stone 46854  
609.6mm x 609.6mm

LRV 21





#05

## CONCRETE <sup>S</sup>

Use this stylish, contemporary tile to make a statement. A perfect choice for spaces with an exclusive vibe that are used intensively.

Concrete 40945

<sup>S</sup> Stocked locally in Australia for a fast turnaround.





Concrete 40945

LRV 37

329mm x 659mm



Concrete 40876

LRV 34

329mm x 659mm



Concrete 40986

LRV 15

329mm x 659mm



#06

## DESERT CRAYOLA <sup>L</sup>

Soft contemporary pastels for a hint of colour in your projects.

Desert Crayola 46533-46562-46616-46696

<sup>L</sup> Lead time: please allow 12-14 weeks.



Desert Crayola 46533  
329mm x 659mm

LRV 34



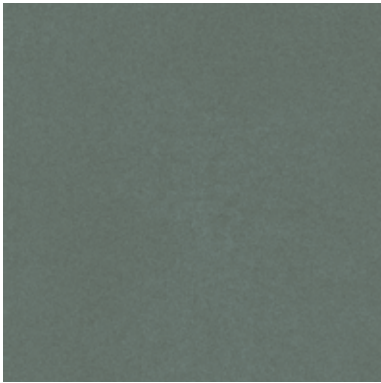
Desert Crayola 46616  
329mm x 659mm

LRV 47



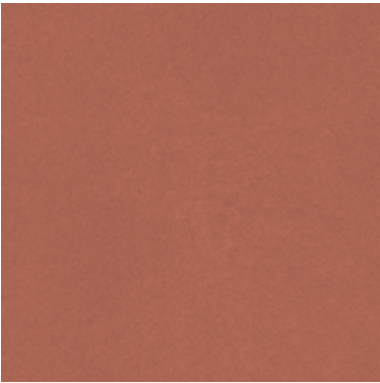
Desert Crayola 46454  
329mm x 659mm

LRV 27



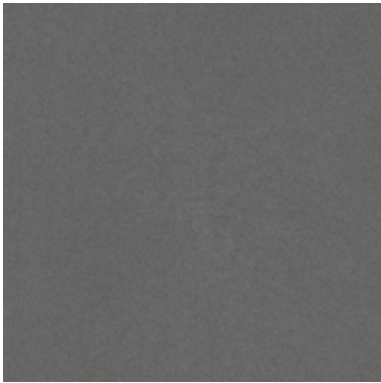
Desert Crayola 46772  
329mm x 659mm

LRV 16



Desert Crayola 46562  
329mm x 659mm

LRV 20



Desert Crayola 46696  
329mm x 659mm

LRV 13



#07

## DESERT STONE <sup>L</sup>

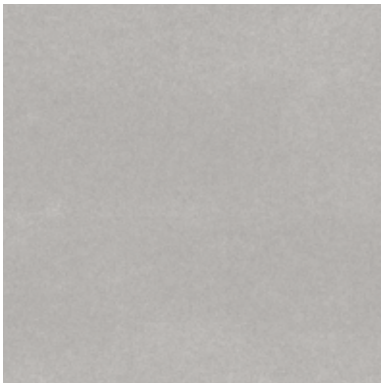
A sleek and shiny epoxy floor look that brings every space to life.

Desert Stone 46950

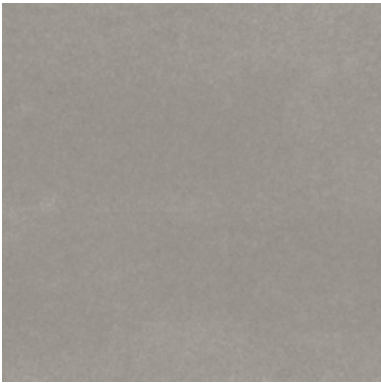
<sup>L</sup> Lead time: please allow 12-14 weeks.



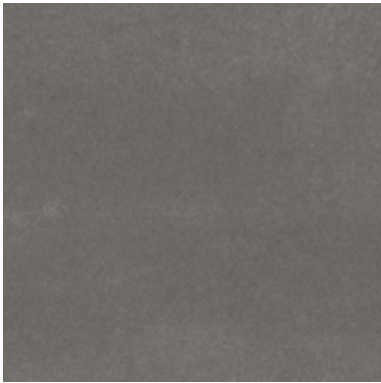
Desert Stone 46210 LRV 60  
329mm x 659mm | 434mm x 868mm



Desert Stone 46915 LRV 42  
329mm x 659mm | 434mm x 868mm



Desert Stone 46920 LRV 36  
329mm x 659mm | 434mm x 868mm



Desert Stone 46950 LRV 22  
329mm x 659mm | 434mm x 868mm



Desert Stone 46970 LRV 15  
329mm x 659mm | 434mm x 868mm





#08

# HOOVER STONE <sup>S</sup>

The subtle effect and cool look of solid worn concrete.

Hoover Stone 46957

<sup>S</sup> Stocked locally in Australia for a fast turnaround.



Hoover Stone 46916  
609.6mm x 609.6mm

LRV 31



Hoover Stone 46926  
609.6mm x 609.6mm

LRV 21



Hoover Stone 46957  
609.6mm x 609.6mm

LRV 14



Hoover Stone 46979  
609.6mm x 609.6mm

LRV 9



#09

## JERSEY STONE <sup>L</sup>

The new marble: a naturally veined design that captures the essence of stone, infusing your interior with peace and tranquillity.

Jersey Stone 46156

<sup>L</sup> Lead time: please allow 12-14 weeks.



Jersey Stone 46156 LRV 62  
329mm x 659mm



Jersey Stone 46913 LRV 37  
329mm x 659mm



Jersey Stone 46976 LRV 8  
329mm x 659mm





#10

# JURA STONE <sup>L</sup>

Bring the ancient elegance of limestone and marble into your interior and fuse it with the warm, comfortable nature of vinyl.

Jura Stone 46956

<sup>L</sup> Lead time: please allow 12-14 weeks.





Jura Stone 46191  
329mm x 659mm

LRV 48



Jura Stone 46214  
329mm x 659mm

LRV 35



Jura Stone 46110  
329mm x 659mm

LRV 62



Jura Stone 46820  
329mm x 659mm

LRV 36



Jura Stone 46935  
329mm x 659mm

LRV 38



Jura Stone 46956  
329mm x 659mm

LRV 19



Jura Stone 46960  
329mm x 659mm

LRV 26



Jura Stone 46975  
329mm x 659mm

LRV 11



#11

# MYSTO <sup>S</sup>

This terrazzo-style floor is eye-catching, audacious and sure to be remembered.

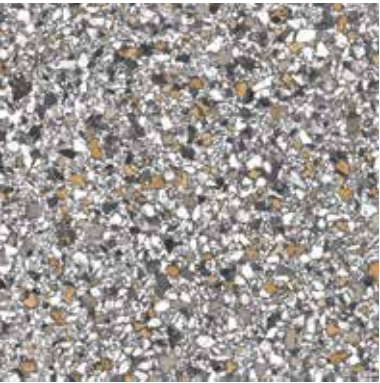
Mysto 46164

<sup>S</sup> Stocked locally in Australia for a fast turnaround.





Mysto 46164 LRV 54  
493mm x 493mm



Mysto 46921 LRV 29  
493mm x 493mm



Mysto 46946 LRV 17  
493mm x 493mm



#12

## RIVER WOOD <sup>L</sup>

Marble or wood, this floor can be whatever you want it to be. An original look for a bold statement.

River Wood 46993

<sup>L</sup> Lead time: please allow 12-14 weeks.



River Wood 46137  
329mm x 659mm

LRV 53



River Wood 46882  
329mm x 659mm

LRV 20



River Wood 46993  
329mm x 659mm

LRV 7





#13

## STEEL ROCK <sup>L</sup>

Choose a credible industrial look with a floor that can take a beating. Inspired by used steel plates, this design creates a modern and industrial look while offering the warmth of a vinyl floor.

Steel Rock 46234

<sup>L</sup> Lead time: please allow 12-14 weeks.



Steel Rock 46234

LRV 28

329mm x 659mm



Steel Rock 46832

LRV 20

329mm x 659mm



Steel Rock 46940

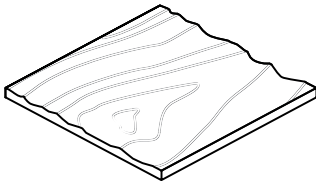
LRV 17

329mm x 659mm

Metal effect on all products

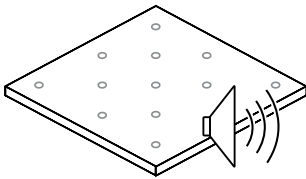
# Why choose Moduleo 55 Tiles?

IVC's unique production process results in a floor that's durable, easy to maintain and natural looking. The secret: the smart use of cutting-edge technologies and our patented Surface Layer Complex.



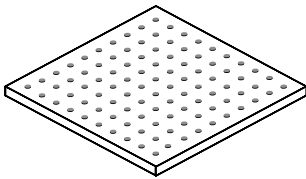
## Original look and feel

IVC select only the most natural looks and rely on an extensive range of realistic structures. Our water-based printing technique, with a very fine dot screen, makes it hard to discern our authentic designs from real wood or genuine stone. And it doesn't stop there; we use large cylinders to minimize pattern repeat, allowing us to cover up to 25m<sup>2</sup> without any duplication. Lastly, we add a V-groove on four sides of each plank or tile, resulting in an even more true-to-nature look.



## The perfect indoor environment

IVC's indoor air quality far exceeds legal requirements, achieving numerous international certifications: ISO 9001, ISO 14001, indoor air quality A+, BRE A+, to name just a few. Additionally, Moduleo 55 Tiles is compatible with underfloor heating and reduces walking sound more than other types of floor.



## Performance you can trust

Although Moduleo 55 Tile's designs may sweep you off your feet, their anti-slip surface sure won't. The Moduleo 55 Tiles collection has been independently tested, achieving satisfactory pendulum and slip rating test results for a range of commercial applications. What's more, a water-resistant wear layer makes the floors easy to maintain.





# The Moduleo 55 technology

## **The function of every layer**

IVC's patented Surface Layer Complex: a multi-layer construction fused into a single, super-strong whole, with a wear layer and lacquer. This robust bind between layers thanks to our composition process technology has numerous assets: acoustic comfort, water resistance and dimensional stability through glass-fibre reinforcement, to name a few. The 0.55 mm wear layer is perfectly suited for high traffic commercial applications. Finally, every floor is protected by Protectonite™ PU, safeguarding it from scratches and stains.













## Discover our LVT collections

At GH Commercial our LVT collections reflect the unique patterns and textures found in nature, and offer distinctive abstract looks to explore. At the same time, they guarantee the easy installation and maintenance of luxury vinyl floors.

The abundance of designs to choose from – oak, concrete, tropical shades and mystical textiles are just a few – give you the freedom to create truly unique spaces. Whether triangular or octagonal, we'll make them for you.

Haven't found what you need in Moduleo 55 Tiles?

Browse our other collections at [www.ghcommercial.com](http://www.ghcommercial.com)



## **Endless combinations, infinite possibilities**

Our broad range of luxury vinyl tiles (LVT) allows you to create unique floors that light up every room. But the ultimate way to take your project's floor to new heights is by combining different products for one special look. That's why we offer a variety of carpet tiles and heterogeneous vinyl that can be easily mixed and matched with your favourite LVT floor.





## IVC Carpet tiles: unique colours that last a lifetime

IVC's carpet tiles are the solution for a truly unique floor that complements the spaces you design. Mix and match shades, or create your own personalised look. The nylon yarn we use is solution-dyed, giving our carpet tiles lasting stain and fade resistance. Even better, the trilobal shape of the yarn makes colours pop and ensures our carpet tiles reflect light and hide dirt.



## Heterogeneous vinyl: easy, durable, versatile

Our sheet vinyl collections are the solution for a stunning floor that's easy to install and maintain. Use them for all your projects; retail, offices, day care centres, social housing, and even schools. Wet jackets, muddy shoes and noisy students are no problem; our heterogeneous vinyl is at the top of its class when it comes to durability, hygiene and acoustic performance.



## Future-proof, for you and for the planet

At GH Commercial and IVC Group, we truly believe in products that are developed with the future in mind. That's why we take the time to pause and reflect on the impacts of our entire strategy and operation. But we also realise that actions speak louder than words, so here's how we raise the industry standard for sustainability, day after day.

- Through resource conservation and waste reduction, we minimise the environmental impact of our manufacturing and distribution operations.
- Our energy-efficient flooring plants are among the leanest and greenest in their class.
- To get our products to you, inland waterways are the logical choice.
- We invest in clean-air technology and cutting-edge manufacturing methods
- We use as many recycled or renewable materials as possible – think of eco-friendly inks and recycled PVC.
- We hold all suppliers accountable for ensuring that products are made in a responsible manner – one that respects both labour and environment.

## **Dedicated to sustainability**

At GH Commercial, we are challenging ourselves to design, manufacture and distribute innovative products with reduced environmental and social impacts. As part of the world's largest flooring manufacturer, we feel a profound sense of responsibility to advance our shared mission of a more sustainable future.

## **Product Stewardship**

Product Recovery Program (3R). Under today's 3R program (Reclaim - Recycle - Reprocess), we take back all GH Commercial broadloom carpets, modular carpets and vinyl flooring products at the end of their first life with the guarantee that no recovered product will be disposed of in landfill.

# Global GreenTag Certified



At GH Commercial, we are delighted to have achieved Global GreenTag’s GreenRate, Level A certification on our IVC Group Moduleo 55 vinyl plank products. Global GreenTag<sup>Cert™</sup> is a third-party certification system that provides independent, evidence-based research on product solutions that contribute to a more sustainably built environment. Requiring complete transparency from manufacturers, the GreenRate program uses an ecolabel system and assesses exactly how and from what each product is made, rating their overall health and environmental impact, while also examining other criteria like local sourcing, ethical labour and supply chain principles.

## Why Choose GreenRate?

The Green Building Council of Australia recognise Global GreenTag as an important independent arbiter in verifying sustainable products; vital for achieving a Green Star certified building. Specifically devised by Global GreenTag to comply with Green Star’s rating tools, GreenRate certified products are examined for ‘Fit-for-Purpose’ criteria and confirmed for Building Code compliance.

As a transparency program with full disclosure of product ingredients, GreenRate looks at a product’s health and ecotoxicity, plus a multitude of other aspects including ingredients at various stages and conditions such as resource use, waste reduction, greenhouse gas and water footprints.





# How Does GreenRate Level A Certification Translate?

GreenRate Level A certification provides 100% of the credit points available in the GreenStar rating tools. Here's how our GreenRate, Level A certification translates across the widely used sustainable building programs in Australia and New Zealand.

## **Green Star:**

- 100% points under the 'Volatile Organic Compounds (VOCs) / Indoor Air Quality (IAQ)' credit (GreenRate, Level B = 75% points & GreenRate, Level C = 50% points)
- Points available under the 'Sustainable Product' credit

## **Well™ Building Standard:**

- Recognition under the VOC's / IAQ and Enhanced Material Safety credits

## **LEED®:**

- Recognition under the 'VOC's / IAQ' credit

## **Infrastructure Sustainability (IS) Rating Scheme:**

- Recognition under the 'Sustainable Product' credit



# Moduleo 55 Tiles



## Technical Specifications

Classification	EN ISO 10874	23 - 33 - 42
Total thickness	EN ISO 24346	2.5mm
Wear layer	EN ISO 24340	0.55mm
Wear Layer PUR treatment	-	Protectonite™
Total weight g/m²	EN ISO 23997	4059
Tiles A	EN ISO 24342	329mm x 659mm
Tiles B	EN ISO 24342	493mm x 493mm
Tiles C	EN ISO 24342	434mm x 868mm
Tiles D	EN ISO 24342	609.6mm x 609.6mm
Box tiles A	-	16 tiles - 3.47m2
Box tiles B	-	14 tiles - 3.40m2
Box tiles C	-	10 tiles - 3.77m2
Box tiles D	-	10 tiles - 3.72m2
Flammability	EN ISO 9239	CRF 6.4 kW/m2 130% Minutes
Scratch resistance	EN ISO 660-2	Group T
Squareness & straightness	EN ISO 24342	≤ 0.25mm (Tiles B) ≤0.35mm (Tiles A, C, D)
Slip resistance	AS/NZ 4586	Refer to individual specification sheets
Residual indentation	EN ISO 24343-1	Norm: ≤0.10mm 0.03mm
Furniture leg resistance	EN ISO 16581	No cracks, no damage
Curling	EN ISO 23999	≤2mm
Electrical resistance	EN 1081	≤10° Ohm
Dimensional stability average measured value	EN ISO 23999	Norm: ≤0.25% ≤ 0.05%
Heat insulation	EN ISO 10456	0.25 k/(m.K)
Thermal resistance R	EN 12664	0.01m². K/W
Electrostatic performance	EN 1815	< 2kV
Formaldehyde group	EN 717-1	E1
Castor chair resistance	EN ISO 26987	No damage to wearlayer, no delamination
Stain resistance	EN ISO 26987	Very good
Light fastness	EN ISO 105-B02	≤6
Residential Warranty*	-	25 Years
Commercial Warranty†	-	10 Years

Test results and certificates are available on request. Specifications and colourations are subject to manufacturing tolerances. Moduleo 55 vinyl plank floors must be installed in accordance with the relevant Australian Standards and in conjunction with the GH Commercial Vinyl Plank Floors Installation Instructions. This product comes with a residential warranty for new product installed indoors in a residential home, if properly installed and maintained. This warranty is in addition to consumers' rights under the statutory consumer guarantee provisions in the Australian Consumer Law, which may exceed the rights under this warranty. The amount recoverable under the warranty decreases after five years. For full information in respect to the scope and limitations of this warranty, please refer to the full terms and conditions available from your retailer, by calling 1300 444 778, or by download from [www.moduleo.com.au](http://www.moduleo.com.au). \*Terms and conditions apply to all commercial warranties – contact your GH Commercial Account Manager. GH Commercial and IVC reserve the right to right to change the specifications of or delete colours or change or amend any written information without notice. Ensure the latest information is being consulted by referring to [www.moduleo.com.au](http://www.moduleo.com.au). While all care is taken, product images may vary in colour due to possible printing process variation. Images do not seek to duplicate the exact visual appearance, but serve merely as a guide or point of reference.

Manufactured under a quality and environmental system as complying with ISO9001 and 14001.



# Get in touch

Want to learn more about Luxury Vinyl Tiles and other flooring solutions brought to you from IVC, or need help tackling an exciting project? We've got you covered.

Go to [www.ghcommercial.com](http://www.ghcommercial.com) to browse our collections or make an appointment with one of our dedicated members at GH Commercial.

Follow us on     









---

## LUXURY VINYL TILES

### **Australia**

Godfrey Hirst Australia Pty Ltd  
(ABN 58 000 849 758)  
1300 444 778  
[ghcommercial.com](http://ghcommercial.com)