



# Art Style

Disruptive Path





Art, in any form, has the power to advance human connection in an increasingly fragmented world. As a universal language and change agent, art intervenes to inspire, heal and unite. Mohawk Group celebrates the interconnectivity of artistic form and expression with an imaginative collection of products with universal appeal. Representing a truly global product launch, the patterns, textures and colours originate from unexpected art interventions. Manufactured in our facilities around the world, these products are globally accessible.

Disruptive Path

Art and design can occasionally be an unexpected, yet extraordinary, journey. Art Style's Disruptive Path supports this notion with a neutral solid ground pattern that reveals electrifying bright accents. Mohawk Group believes design can be transformative, and we invite you to create your own art intervention with Art Style.



Disruptive Path 933 Crimson Flash, Shared Path 989 Charcoal (Herringbone)  
Cover: Disruptive Path 946 Above Par, Color Balance 141 Sunlight and 641 Punchy (Herringbone)





Disruptive Path Colourway



Disruptive Path 911 Mellow Yellow



Disruptive Path 913 Orange Crush



Disruptive Path 914 Purple Dawn



Disruptive Path 915 Blue Dusk



Disruptive Path 916 Lime Rush



Disruptive Path 919 Pink Berry



Disruptive Path 931 Neon Citron



Disruptive Path 933 Crimson Flash



Disruptive Path 944 Cotton Candy



Disruptive Path 946 Above Par



Disruptive Path 954 Purple Ash



Disruptive Path 955 Cosmic Sky



Disruptive Path 915 Blue Dusk, Shared Path 924 Platinum (Monolithic Stepping)





# Matuto Plus

ENHANCED RESILIENT TILE

Named after the Filipino word for “teacher,” Matuto Plus enhanced resilient tile features eye-catching colours that energize the space and stimulate creativity.

## Matuto Plus Colourway

			
646 Green Grass	656 Botany	556 Mega Blue	555 Blue Night
			
599 Deep Sea	454 Wizard	353 Red Hot	252 Outrageous Orange
			
131 Lemon Twist	123 Barely Beige	752 Nutshell	858 Bronze Blast
			
959 Grey Granite	927 Sonic Silver	926 Agreeable Grey	915 Frostbite

## CONSTRUCTION

The 12"x 24" (304.8mm x 609.6mm) tiles are designed with a versatile concrete style visual and embossed texture, especially relevant in schools, healthcare settings and retail spaces.

## PERFORMANCE

The 20 mil (0.5mm) commercial wear layer coated with M-Force™ enhanced urethane finish provides durability and cleanability with a no-polish option that allows for cost-effective maintenance.

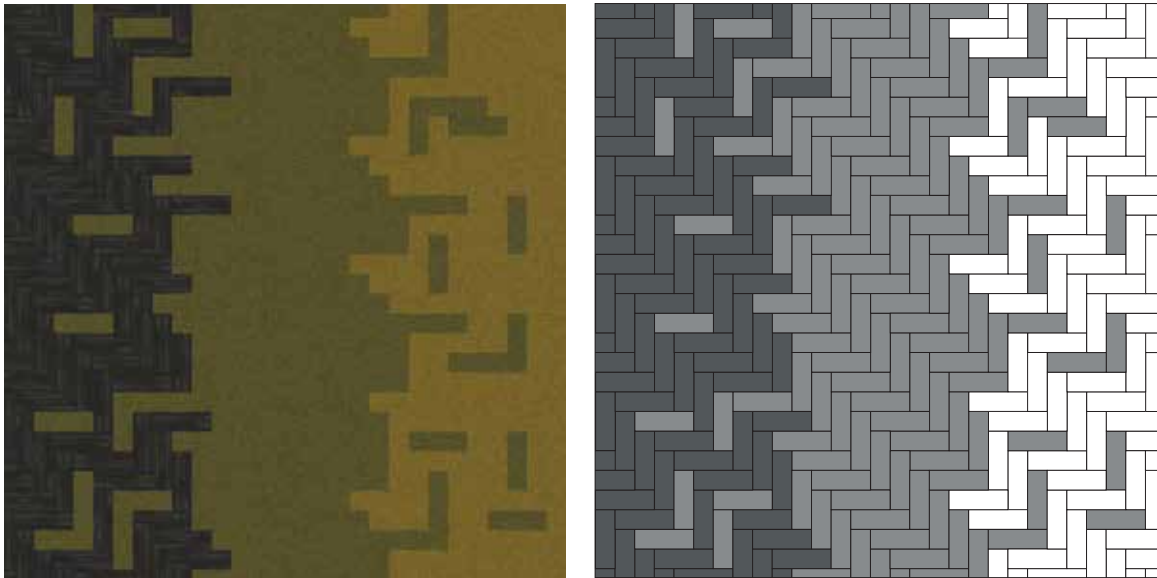
## COLOUR

Mix and match across this palette of popular school colours - from fresh, youthful brights to an array of clean, grounded neutrals.

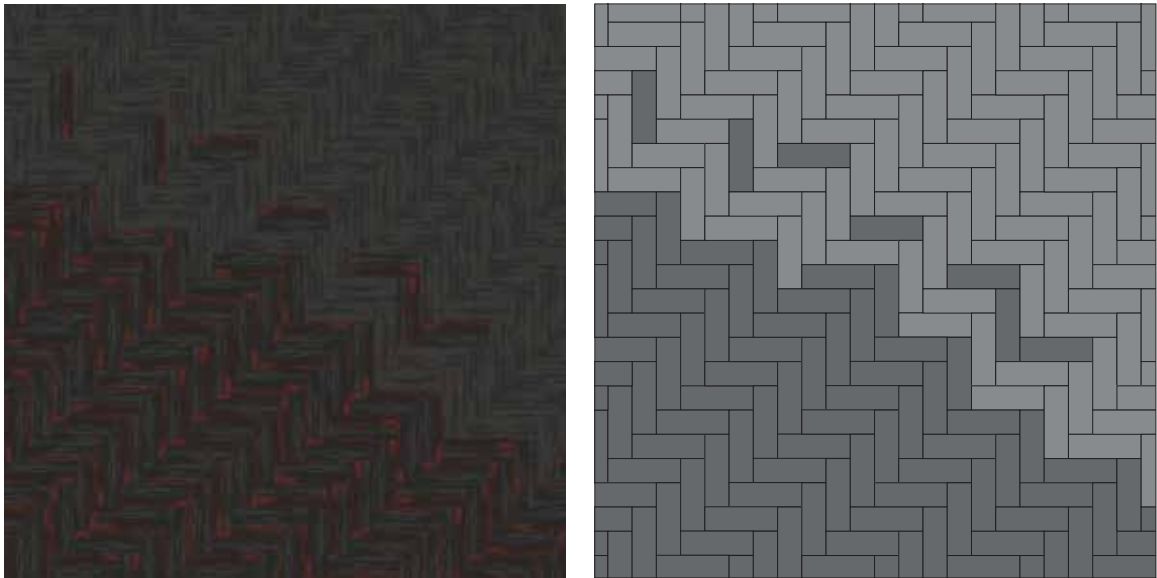


# Installation Inspirations

The installation ideas featured here are a small sampling of the infinite possibilities offered in the Art Style Collection.



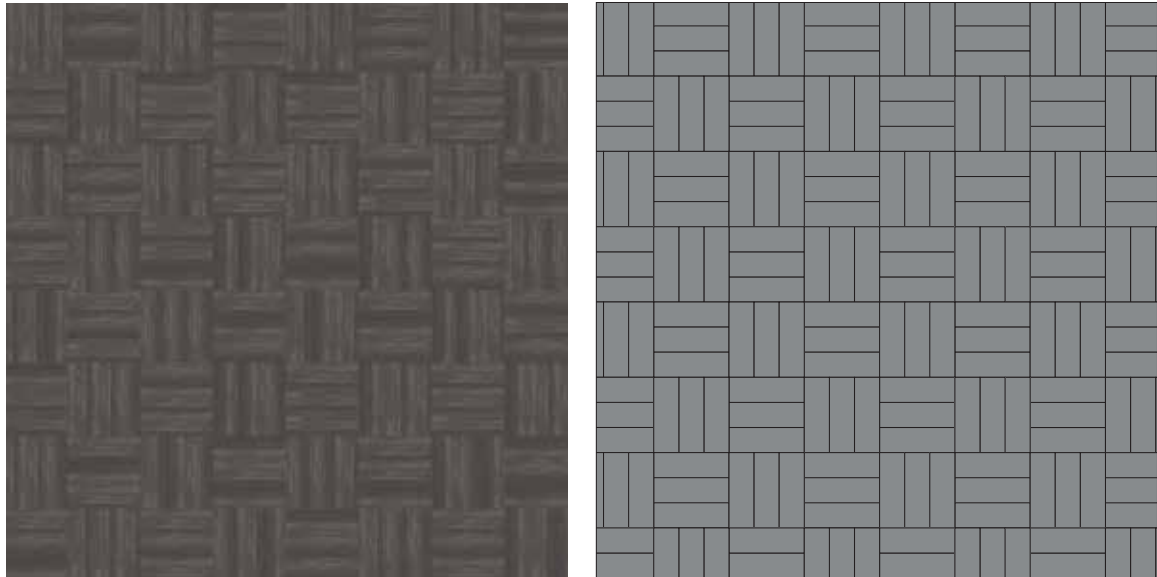
Disruptive Path 946 Above Par, Color Balance 141 Sunlight and Color Balance 641 Punchy (Herringbone)



Disruptive Path 933 Crimson Flash, Shared Path 989 Charcoal (Herringbone)



Disruptive Path 915 Blue Dusk, Shared Path 924 Platinum (Monolithic Stepping)



Disruptive Path 919 Pink Berry (Basket Weave)





Disruptive Path 919 Pink Berry (Basket Weave)

# Colorstrand® FIBRE

For over 15 years, Colorstrand® fibre has continually exceeded the demanding expectations of our customers for their projects. With the design flexibility and colour intensity of solution dyed fibre, Colorstrand® delivers lasting beauty and value.



## PERFORMANCE

- Unsurpassed colourfastness to light, atmospheric contaminants, and harsh cleaning agents in Colorstrand® SD
- Sentry Plus™ soil and stain protection keeps your investment looking newer longer

## BUDGET

- Internally extruded fibre allows cost control of products
- Numerous broadloom and modular products available at value engineered budgets

## SUSTAINABILITY

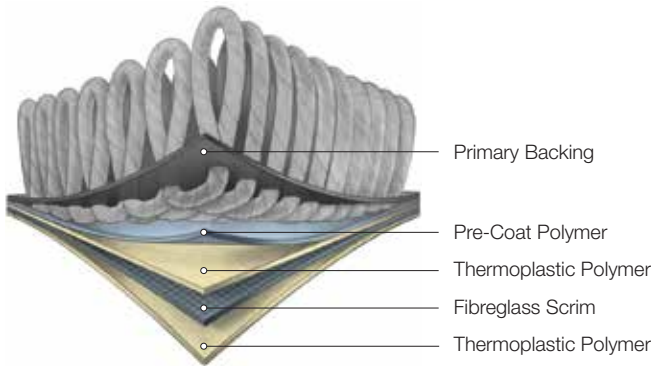
- 40% certified Pre-Consumer Recycled Content

## DESIGN

- A wide variety of colours for excellent design flexibility

## SERVICE

- In-stock locally and serviced by local consultants for superior lead times and service reliability



# EcoFlex™ NXT

## CARPET TILE BACKING

EcoFlex™ NXT is a polyolefin carpet tile backing that is up to 40% lighter than similar competitive products, making it easier to install and less expensive to ship. It also incorporates a minimum of 35% pre-consumer recycled content.

### PERFORMANCE

- Provides permanent tile dimensional stability
- Tiles are impervious to moisture damage from spills and water extraction cleaning
- Main body of tile provides an effective moisture barrier (not applicable at the seams)
- Construction features superior tuft bind that is highly resistant to edge ravel

### INSTALLATION

- Greatly reduces sub-floor moisture concerns and saves money on mitigation
- Worry free installation with no visible moisture present using our Flexlok® Tab System
- Superior construction offers reliability for the life of your installation

### SUSTAINABILITY

- Contains no plasticisers
- Contains a minimum of 35% pre-consumer recycled content based on total product weight
- Certified at the Gold Level in accordance with NSF/ANSI 140
- EcoFlex™ NXT may contribute to or comply with LEED® credits MR 4.0, IEQ 4.3 and Innovation credit for NSF 140
- Declare Red List Free

# Transparency SUSTAINABLE LEADERSHIP

Mohawk Group leads the building products industry in transparency with the largest selection of products with Declare Labels, Health Product Declarations (HPDs), and Environmental Product Declarations (EPDs). What's more, we offer over 500 Red List Free Declared products.



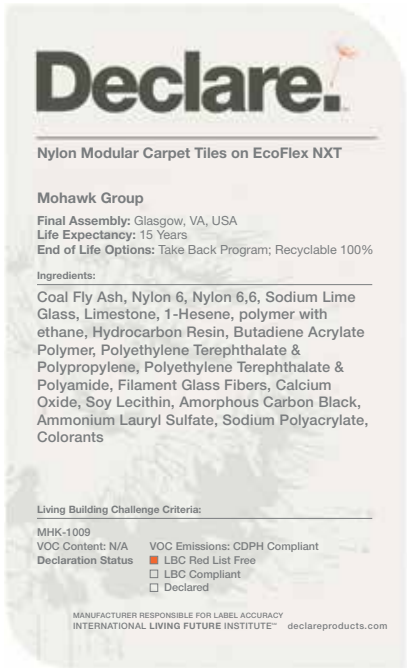
### OUR COMMITMENT

As a Gaia sponsor of the International Living Future Institute (ILFI), we are committed to revolutionary programs that are redefining the green building movement. These include the ILFI's Living Building Challenge and Declare programs.

Declare Labels are a 'nutrition label' for the building industry, providing ingredients, source and manufacturing locations. We offer you:

- The most products with Declare Labels
- The most Red List Free products

We have eliminated the mystery of product ingredients so you get total product transparency.\*



Mohawk Group utilises multiple platforms for disclosing our transparency information, including: Designer Pages, Mindful Materials and the Declare Database.



\*Transparency documentation can be found at [mohawkgroup.com.au](http://mohawkgroup.com.au) or [mohawkgroup.co.nz](http://mohawkgroup.co.nz)



# Visual Interactive Studio

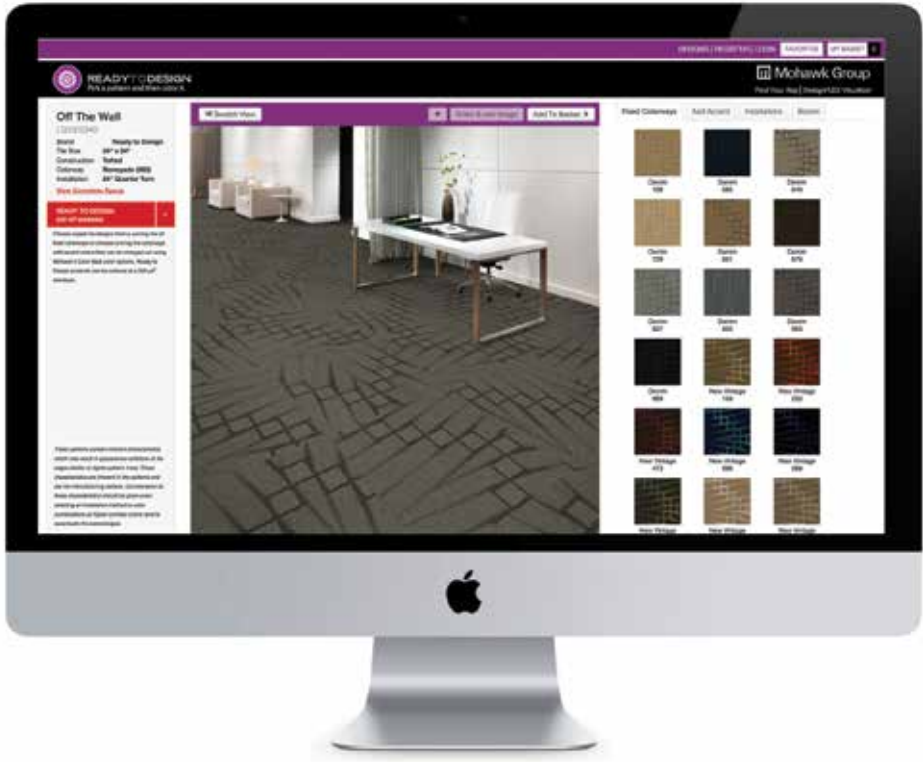
Mohawk Group's Visual Interactive Studio (VIS) offers a suite of design services to help you craft and perfect every aspect of your flooring selection.

## READY TO DESIGN

Visit our website and browse through hundreds of bespoke carpet patterns where you can customise colour and installation methods. View your creation laid out in various room scenes at the click of a button and order a PDF layout, straight to your inbox.

## DESIGNFLEX VISUALISER

Also online, our DesignFlex Visualiser allows you to select standard Mohawk Group ranges, customise the installation method and view your creation in various room scenes. Again, you can order a PDF layout straight to your inbox for your next client meeting.



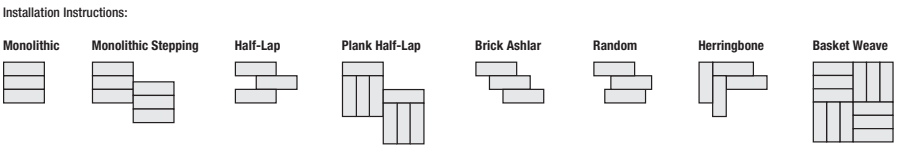
## VIS TEAM

The Visual Interactive Studio (VIS) team, based at the Mohawk Light Lab in Georgia, can take your own 2D floor plan or 3D building render and add any standard or custom Mohawk Group product in any installation method. This service also includes an installation guide, showing tile direction and colour reference to make specification a breeze.

# Specifications

**Art Style Collection**  
**Disruptive Path**  
**Carpet Tile**

DESIGN	
Size	12" x 36" (304.8mm x 914.4mm)
Tile Thickness	3/16 inch (5mm)
Surface Appearance	Textured Patterned Multi-Coloured Loop
Fibre Type	Colorstrand® SD Nylon
Dye Method	Solution Dyed
Installation Methods	Monolithic, Monolithic Stepping, Half-Lap, Brick Ashlar, Basket Weave, Random, Herringbone, Plank Half-Lap
Colours Available	12
PERFORMANCE	
Construction	Tufted
Gauge	1/12" (47 rows per 10cm)
Stain/Soil Release Technology	Sentry Plus™ stain and soil protection
Backing Material	EcoFlex™ NXT
Flammability#	ASTM E 648 - Class 1 (Glue Down)
Smoke Density"	ASTM E 662 - Less than 450
Static Propensity	AATCC - 134 Under 3.5 KV
SUSTAINABILITY	
Certification	Declare Red List Free
Indoor Air Quality	Green Label Plus Certified #1171
NSF 140	Gold



These patterns contain inherent characteristics which may result in pattern run off and/or pattern appearance variations at the seams or tile edges (darker or lighter pattern lines). These characteristics are inherent in the patterns and are not manufacturing defects. Consideration to these characteristics should be given when selecting an installation method.

#Test results and certificates are available on request.

Specifications and colourations are subject to manufacturing tolerances. As part of the manufacturer's continuous improvement program, the manufacturer reserves the right to change the specifications of or delete colours of this product without notice.

These carpet tiles must be installed in accordance with AS2455 (Parts 1 & 2) and the Godfrey Hirst Carpet Tile Installation Instructions.

While all care is taken, product images may vary in colour due to possible printing process variations. Images do not seek to duplicate the exact visual appearance, but serve merely as a guide or point of reference.

For current and complete specifications please visit [mohawkgroup.com.au](http://mohawkgroup.com.au) or [mohawkgroup.co.nz](http://mohawkgroup.co.nz)





