

Homogeneous Vinyl Sheet Floors Installation Instructions

New Zealand

Australia / New Zealand

General

Godfrey Hirst Vinyl Sheet (Direct Stick) Installation Guidelines should be reviewed by installers prior to the commencement of installation. All installations should be in accordance with NZS/AS 1884:2013. Should you have any queries in relation to the recommendations below, please get in touch with your retailer or Godfrey Hirst Floors representative.

Godfrey Hirst vinyl sheet floors have been tested and are recommended for use with the adhesives in the Godfrey Hirst Adhesive Recommendations list. Godfrey Hirst cannot guarantee the performance of products installed with any other adhesives.

WARNING: Prior to any take-up or removal of floorcoverings, adhesives or underlay, you should be certain these do not contain asbestos. If it is known or suspected the previous flooring, adhesive or underlay contains asbestos, you should avoid creating dust and the previous flooring and/or components should only be removed by an appropriately licensed asbestos removal contractor.

Pre-Laying Checks

It is the installer's responsibility to verify that the product supplied is the correct product, colour, pattern, and quantity, prior to installation and in good natural light, check for any obvious visual defects.

Site Testing & Conditioning

Concrete sub-floors must be tested in accordance with NZS/AS 1884:2013 for moisture using the relative humidity in-situ probe test & pH. RH levels should not exceed 75% & pH levels should not exceed 10.

Godfrey Hirst Vinyl Sheet products must be allowed to condition on-site for a minimum period of 48 hours in a dry, well-ventilated area with an air temperature between 18°C and 38°C and a minimum floor temperature of 15°C. The temperature must remain within this range for the entire installation period and a minimum of 48 hours after installation completion. For optimum bond strength during and 48 hours post installation, the ambient relative humidity of the area where the products are to be installed must not exceed 75% or fall below 40%.

Godfrey Hirst Vinyl Sheet rolls should be stored in an upright position. If storing flat absolute care must be taken to avoid any indentation damage. Be careful when stacking rolls. Falling rolls can cause harm to people, and the environment and may damage the product.

Sub Floor Preparation

Condition the room's floor temperature for a minimum 24 hours prior to installation for optimum results. The subfloor must comply with NZS/AS 1884:2013 and be solid, level, dry, smooth, clean and free from all contaminants and substances which could be harmful to vinyl or adhesive. The installer must inspect and approve the subfloor as satisfying these requirements prior to installation. If required, remove any contaminants. Do not install over existing floor coverings as any such installation may void the warranty.

Installation Procedure

Vinyl sheet should be carefully checked prior to installation. Never install defective products. If the product has any visual defects or damage, contact the retailer. Godfrey Hirst will not be responsible for any visible defects after the flooring has been cut and/or installed.

1. Production Batch number (Tonality) checks:

- All rolls of Godfrey Hirst Flooring products are marked with a 'batch number' and 'Roll No'. When installing more than one roll in an area, do ensure the rolls have the same 'batch number' and whilst installing different rolls side by side, install in a sequence of ascending "Roll No".

Example:

- Roll 1: "Roll No. XXX4190404"
- Roll 2: "Roll No. XXX4190405"
- Roll 3: "Roll No. XXX4190406"

2. Material checks:

- Check for obvious transit damage or manufacturing defects in good daylight conditions.
- Check material is the correct color code (SKU) and ensure sufficient quantity for the entire site.
- Allow all the materials to acclimatize to job climatic conditions 48 hours before installation, unpack the materials in advance to release the stress to minimize the dimension variance. Avoid immediate installation after unpacking.
- After loosely laying the first two lengths and before adhering, step back and inspect the overall effect. If acceptable, then go ahead and adhere, but if there is a problem or doubt of any kind then stop immediately and call your retailer or Godfrey Hirst Flooring Representative.

3. Structural and Seams checks:

- Expansion/ construction (Structural) joints
- Godfrey Hirst does not recommend that resilient floorcoverings be installed across expansion construction joints. Various expansion/ construction joint covers are available and should be specified by the architect or agreed between the contractor and the purchaser.

4. Vinyl flooring sheet material set out (Seams):

- Vinyl flooring sheet material direction, seam and cross join placement should be approved by the client prior to the installation. Avoid cross joins and seams in heavy traffic ways. Wherever possible lay the sheet down the length of the room to minimize the number of seams. Seams should run toward the main light source and or the length of the room.

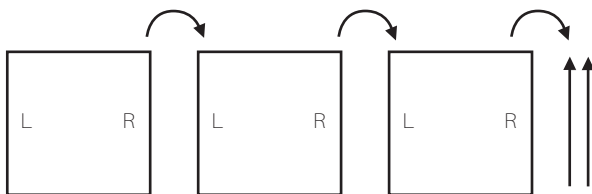
Homogeneous Vinyl Sheet Floors Installation Instructions

New Zealand

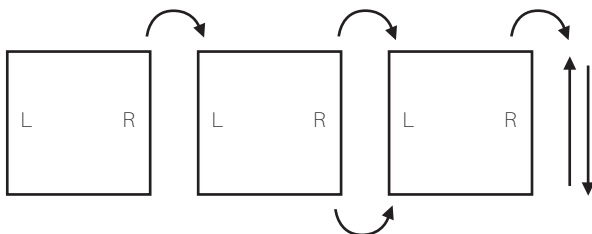
Homogenous Vinyl Sheet

Installation Instructions

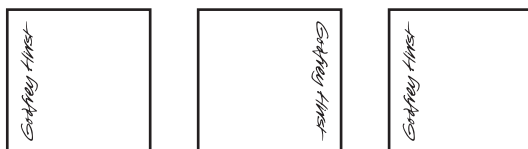
1. Prepare the subfloor in accordance with NZS/AS 1884:2013 as set out in these instructions.
2. Vacuum and clean a cutting area. Godfrey Hirst recommends the use of a vinyl dolly to roll out the sheet vinyl face up. Cut the required lengths, loosely roll up face in and stand in the area to be installed, this will help to further condition the vinyl to the area.
3. Godfrey Hirst recommends cutting off the lengths of material longer than the net size measured. When cutting to size please consider the nature of the design and roll direction.
4. **Maidstone - Directional.** Godfrey Hirst recommends that every sheet be installed in the same direction.



5. **Sandstone - Reverse Laye.** Godfrey Hirst recommends that every sheet is rotated (180 degrees).



6. **Albertine - Logo to Logo.** Godfrey Hirst recommends that product is installed logo to logo, unmarked to unmarked. The logo will wipe away easily with a clean damp cloth.



8. Coved installation: Godfrey Hirst recommends the use of the 20mm or 32mm cove fillet to support the coved vinyl. The standard cove height is estimated at 100-150mm based on site requirements.



Homogeneous Vinyl Sheet Floors Installation Instructions

New Zealand

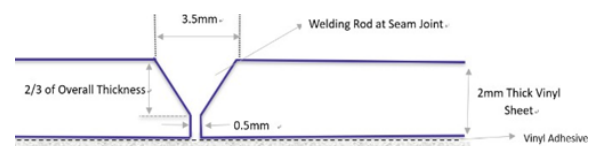
Australia / New Zealand

Adhesives & Application

1. Only use a Godfrey Hirst-recommended Hard-Set Acrylic Adhesive (in accordance with relevant Godfrey Hirst Adhesive Recommendations) and your chosen adhesive manufacturer guidelines. The recommended trowel notch sizes are A2 or A3.
2. Prior to using the adhesive, contact the manufacturer to confirm the spread rate and open time for site conditions as this can affect the bonding capability and performance of the floor covering.
3. Once the vinyl is pulled back to be glued, vacuum clean the sub-floor surface and the back of the vinyl. Spread the recommended adhesive using the nominated trowel notch size. Allow adhesive to tack up or reach the "Opening Time", depending on site and sub-floor conditions. Lay vinyl flooring into the adhesive making sure to achieve a full wet transfer onto the back of the vinyl, using a roller to expel any trapped air, then roll the vinyl with a minimum 45kg roller in both directions to flatten adhesive trowel lines and ensure full adhesive transfer.

4. Cut along the scribe line keeping the knife upright to achieve a square edge, roll cut edge of vinyl into the adhesive using hand roller. Roll entire floor using a minimum 45kg roller.
5. Routing or grooving and Heat welding should only be done when adhesive has cured for 24 hours.

Rout or groove the seam in a "U" or "V" shape to a maximum depth of 2/3rd the material thickness using a grooving machine or hand groover.



Heat Weld Seam Instructions

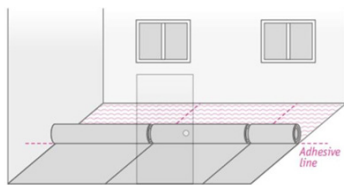
1. For optimal welding results and to reduce damage to the surface of the vinyl Godfrey Hirst recommend the use of a fine air stream speed nozzle.



Leister fine airstream nozzle

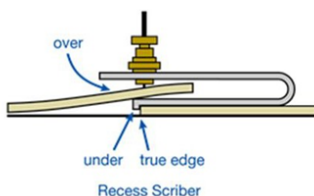
Leister Heat Gun

2. Set the temperature setting on the hot air welder, fitted with a speed nozzle, to deliver enough heat to fuse the weld rod to the sheet. Amperage of electrical supply, length of extension cord and wire size along with site conditions and subfloor temperature will affect the temperature setting. As a guide, a Leister weld gun fitted with a speed nozzle should be set to heat setting of around 400 to 450 degrees. Test weld on a piece of scrap material until correct setting is achieved.
3. Insert weld rod into the speed nozzle and immediately insert the rod into the groove, hold the welding gun at an angle so that the tip of the speed nozzle is parallel with the material. A good weld will result when the weld just starts to flair on each side of the seam. If the weld joint flairs excessively you are going too slow. Scorching the material can occur if the heat setting is too high.
4. To change directions in welding, shave off excess weld rod, groove the end of the weld rod for approximately 20mm to create a splice. Start welding from the opposite direction and continue welding until you overlap the grooved weld rod, continue for another 20mm before lifting weld off.



Seam Preparation

1. All factory edges should be removed during installation, trim the first side using the Edge trimmer.
2. Or alternatively by cutting 10mm from the factory edge using a straight blade knife and straight edge. The second run of vinyl should overlap the first by 10 to 15mm.
3. After the vinyl has been placed into the adhesive under scribe the join, scribe the seams using a recess scriber set to provide a gap of about 0.5mm.

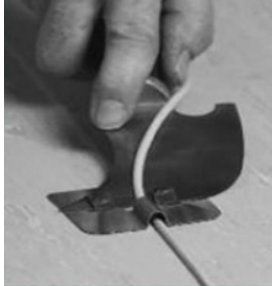


Homogeneous Vinyl Sheet Floors Installation Instructions

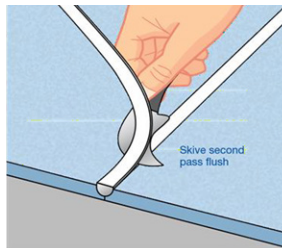
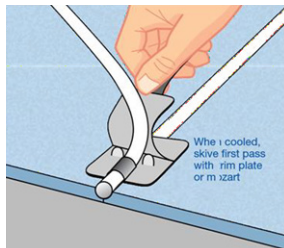
New Zealand

Australia / New Zealand

5. Allow weld rod to cool to the room/ floor temperature, skive the excess weld rod off in two passes. The first pass using a quarter moon (spatula) knife with a trim plate or a Mozart trimming tool with the spacing plate.

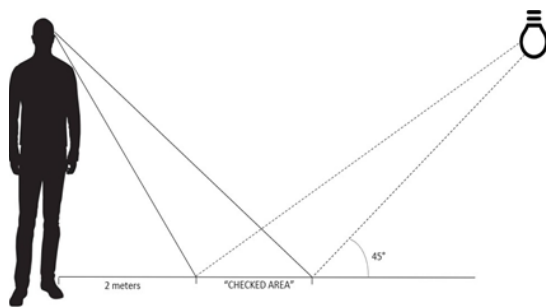


6. Allow weld rod to completely cool before final skiving (trimming).



Inspection method:

Inspector should be standing upright having a view of the floor approximately 2 meters away from the "checked area" with good day light conditions. Lighting should not be directly on top of the "checked area", please refer to "Fig 1" below.



Post Installation

If construction work is still underway, the floor should be protected from site debris, dirt, soil, traffic etc by use of a protective surface (eg sheet plastic, hard board etc). It is recommended that plywood be placed over the floor during the removal or replacement of furniture or any heavy objects within 48 hours of the installation. Please be careful to ensure no condensation occurs and any adhesive tape or protective material does not damage the surface or affect the aesthetics of the finished installation. Prevent the floor from coming into contact with water for the first 72 hours after installation.

Underfloor Heating

Godfrey Hirst vinyl can be used with underfloor heating systems and flooring should be laid in accordance with NZS/AS 1884 2013. Wired electrical systems are not recommended unless they are encased in 6mm of suitable levelling compound. Please contact your floor preparation provider for suitability.

The heating systems can be slowly turned on 72 hours after the completion of the installation, with the temperature gradually increased (1-2°C per 24 hours) over a 7-day period until the normal operating temperature has been reached. Thereafter the temperature should always be increased or decreased gradually (1-2°C per 24 hours) for the lifetime of the installation. The maximum surface temperature of the concrete slab should not exceed 26°C at all times. Be mindful of rugs and rug placement as these can trap heat. The floor can heat up underneath a heavy rug beyond the maximum temperature of 26°C.

Please Note:

Godfrey Hirst's Vinyl Sheet Installation Guidelines are intended to assist in achieving an optimum installation. Any variation to the recommendations above by installers will affect any warranties. Care and Maintenance Instructions must be followed to maintain the product warranty. Please ensure these instructions are left with the occupier. For further information, please contact your local Godfrey Hirst Floors representative.