

Bold *Brights*

SALISBURY - 10 Sarsen Stone

B

The Bold Brights trend introduces a vibrant, modern approach to home design, perfect for creating an inviting yet lively setting for socialising. This trend blends bold, dynamic colours with earthy, grounding tones, resulting in a space that feels warm, dynamic and effortlessly stylish.

**TRE
-ND**

Central to this look are 'blue blocks,' where deep, classic shades of blue provide a steady foundation. These blues not only anchor the room but also evoke a sense of calm and order, allowing the more playful colours to stand out. These bright hues can be used sparingly to highlight key areas—think statement chairs, accent walls, or even a bar cart - creating dynamic visual interest without overwhelming the space.



@feltexcarpets

www.feltex.com



Offset the vibrancy of the bright tones, with rich hues like chocolate, mahogany, and terracotta. These warm colours soften the intensity of the brights and add layers of texture and depth, bringing in an organic, comforting feel. The resulting contrast between the vivid and the muted ensures that the space feels balanced, visually cohesive, and inviting.

THE ART OF ENTERTAINING WITH BOLD BRIGHTS

This colour scheme is ideal for drawing attention to key areas like seating arrangements or bar setups. Bright accents add a sense of fun and energy, while deeper tones ensure the space remains grounded and sophisticated. It's an easy way to create an atmosphere that is both stylish and approachable, while enjoying a lively ambiance.



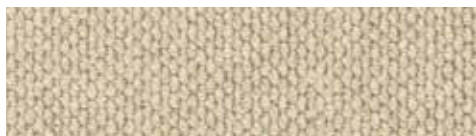
SALISBURY - 10 Sarsen Stone



HAMMERSMITH - 4 Ravenscourt



13TH BEACH - 12 Ants



STONEFIELDS - 16 Feldspar



OPULENT WEAVE - 10 Silk



SPINIFEX - 13 Earth



CREATING DYNAMIC VISUAL INTEREST WITHOUT OVERWHELMING THE SPACE.

A vibrant, modern approach to home design.

HOW TO INCORPORATE BOLD BRIGHTS INTO YOUR HOME

Start with a neutral foundation, like a soft, textured wool carpet in a light shade such as Salisbury in 10 Sarsen Stone.

Once the foundation is set, layer in the brights through accessories such as cushions, throws, or artwork. To add a warm, organic touch, integrate earthy tones like sepia or terracotta through furniture or decorative elements. The balance of textures and colours will ensure your space feels both vibrant and cohesive.



COMPLIMENTARY SAMPLES

Create your own bold, bright interior with our Feltex wool carpets. Scan the QR code or visit www.feltex.com to order your three complimentary samples to get started.