



Accredited for compliance with ISO/IEC 17025 – Testing  
NATA is a signatory to the ILAC Mutual Recognition Arrangement for the mutual recognition of the equivalence of testing, medical testing, calibration and inspection reports

**OIL-WET INCLINING PLATFORM SLIP RESISTANCE TEST**

**Prepared for:** Godfrey Hirst  
ATTENTION: Mandy Chandley  
7 Factories Road  
SOUTH GEELONG VIC 3220

**Specimen Description:** **Master Name:** **Sold As:**  
GH LVP GU 196x1320 Grand Ultimo  
Oxford

**No. of Specimens & Size:** 2 off, 196x1320 mm. (Sampling conducted by client).

**Surface Structure:** Smooth

**Specimen Preparation:** Washed with water and pH neutral detergent, rinsed then dried.

**Specimen Configuration:** Unfixed

**Test Direction:** Test conducted parallel with embossed finish.

**Joint Type & Width:** N/A

**Air Temperature:** 22°C

**Test Standard:** AS 4586: 2013 Slip resistance classification of new pedestrian surface materials, Appendix D - Oil-Wet Inclining Platform Test.

**Test Shoe:** LeipzigV73-SP

**Test Location:** ATTAR, 44-48 Rocco Drive, Scoresby, VIC.

**Test Date:** 28 April 2023

**Test Personnel:** Dale Siegle and Marcus Braché

<b>Displacement Space</b> (rounded to nearest 0.5 cm <sup>3</sup> /dm <sup>2</sup> ):	Not tested
<b>Displacement Space Assessment Group</b> (Appendix E, AS 4586 – 2013):	Not tested
<b>Corrected mean overall acceptance angle (<math>\alpha_{ave}</math>)</b> (rounded down to the nearest degree):	10°
<b>Classification:</b>	R10

These results apply only to the specimens tested and it is recommended that before selection of flooring or paving materials the effect of service conditions, including maintenance procedures and wear on their slip-resistance be checked.

Prepared by:

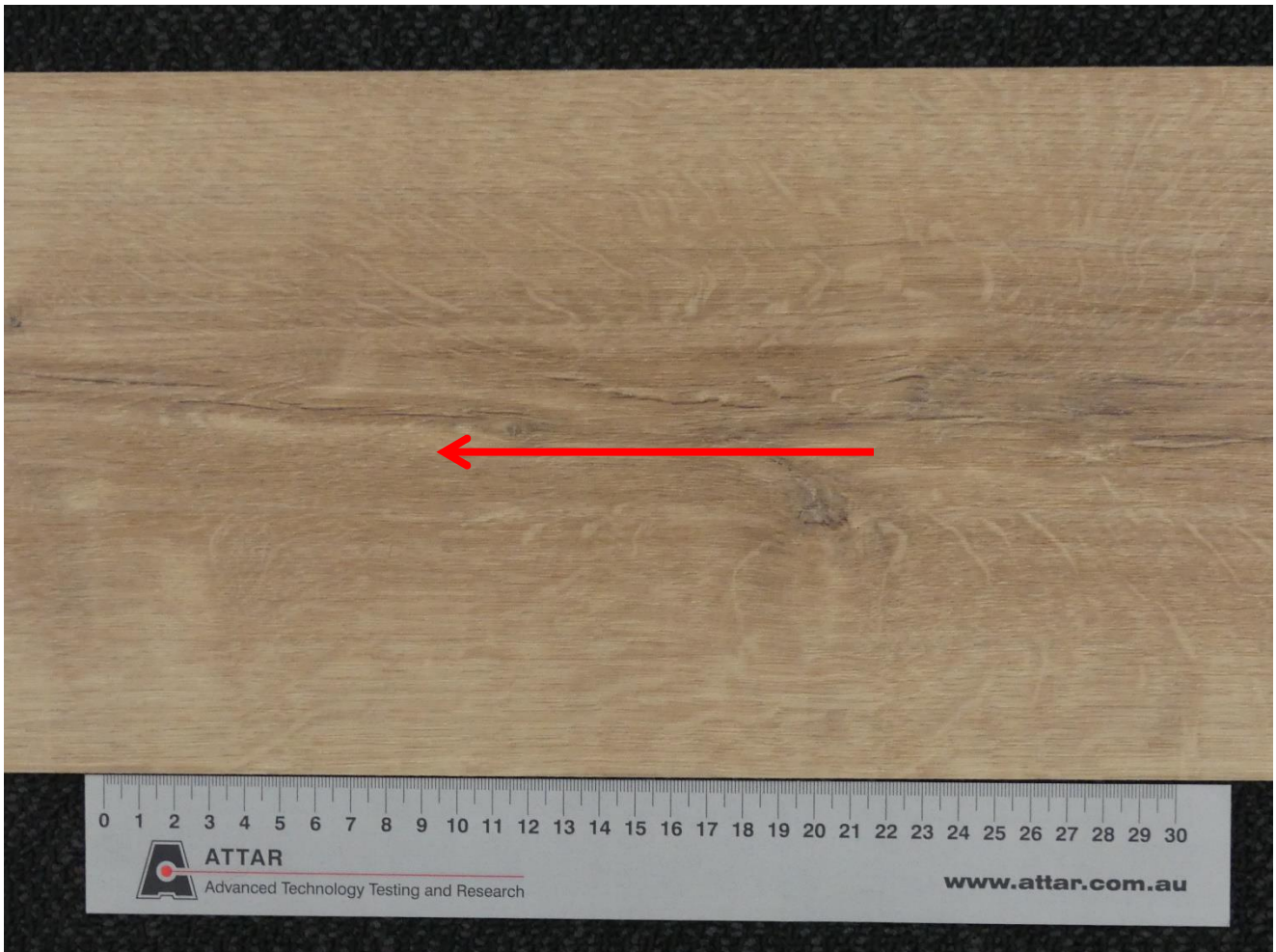
Reviewed by:



Daniel King BSc/BEng (mat) Hons., MIEAust  
General Manager – Compliance Services  
Approved Signatory



Dale Siegle  
Technical Consultant – Compliance Services  
Approved Signatory



**Figure 1:** Photo of specimen tested.  
Arrow indicates direction of test.



**CLASSIFICATION CRITERIA – AS 4586: 2013**  
**Oil Wet Inclining Platform Test – Appendix D**

**Compliance**

**TABLE 5: CLASSIFICATION OF PEDESTRIAN SURFACE MATERIALS ACCORDING TO THE  
OIL-WET INCLINING PLATFORM TEST**

<b>Classification</b>	<b>Angle, degrees</b>
No Classification	<6
R9	≥6 <10
R10	≥10 <19
R11	≥19 <27
R12	≥27 <35
R13	≥35