

CLICK TO VIEW THE  
VIRTUAL TOUR



*For Sublease*

14 Duncan Street

*Broker Bonus Fee!*



## PROPERTY DETAILS

**SUITE SIZE:**

6,145 sq. ft.

**NET RENT:**

Aggressive Rate

**TERM:**

September 30, 2028

Contact Listing Agents

**AVAILABLE:**

60 Days

**ADDITIONAL RENT:**

\$23.46 (2021 estimate)

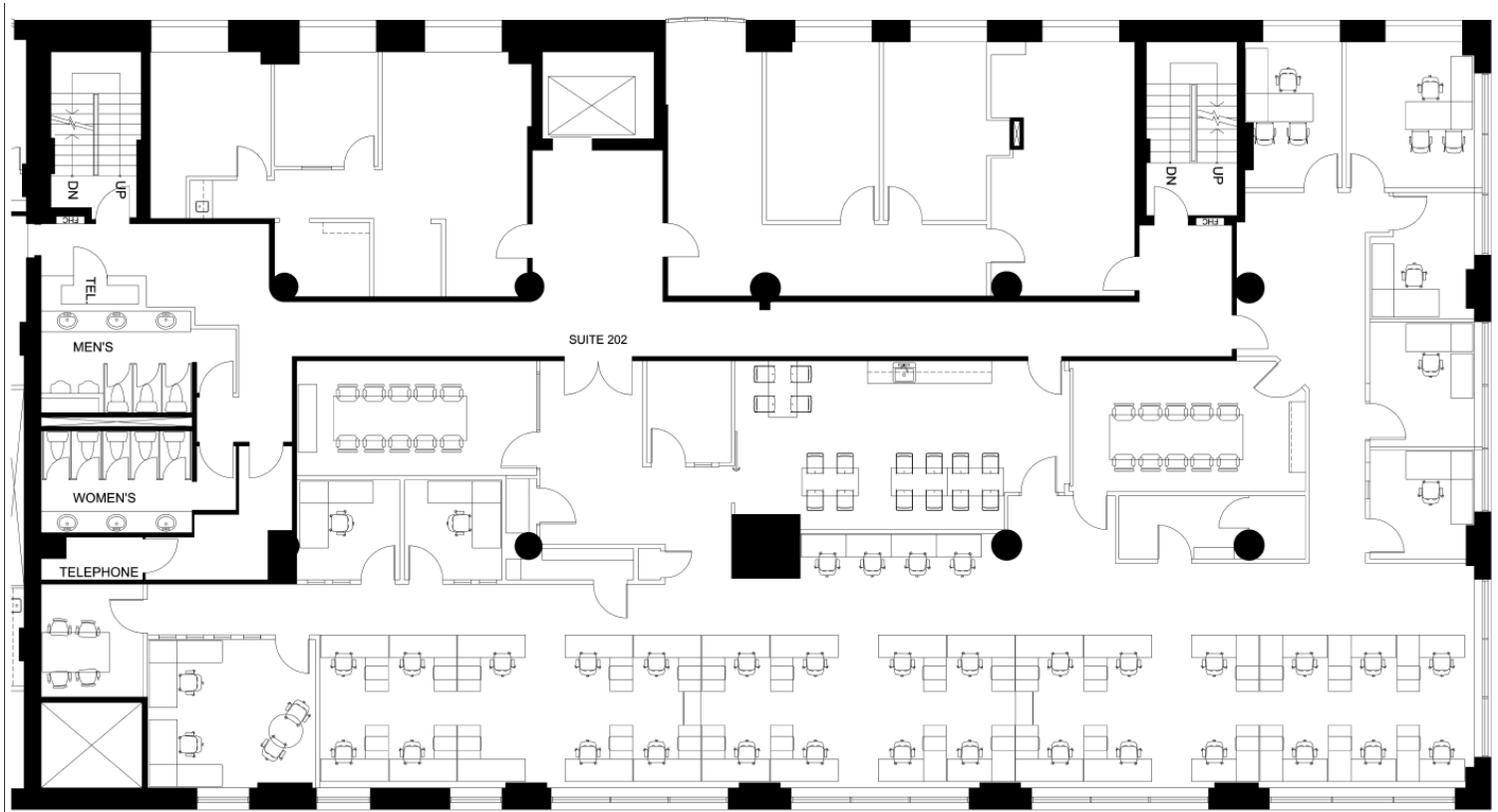
## SPACE HIGHLIGHTS

- Creative affordable office space
- Move-in condition
- Newly finished space with open area, meeting rooms, kitchen
- Brand new Herman Miller furniture available for tenant
- Steps from PATH, King Streetcar, and numerous shops and restaurants

CLICK TO VIEW THE  
VIRTUAL TOUR



*For Sublease*



**Jonathan Redrupp\***  
+1 (416) 803-8425  
Jonathan.Redrupp@am.jll.com

**Michelle McLaughlin\*\***  
+1 (905) 320-3351  
Michelle.McLaughlin@am.jll.com

**Henry Stafferton\*\***  
+1 (416) 459-0522  
Henry.Stafferton@am.jll.com

Although information has been obtained from sources deemed reliable, neither Owner nor JLL makes any guarantees, warranties or representations, express or implied, as to the completeness or accuracy as to the information contained herein. Any projections, opinions, assumptions or estimates used are for example only. There may be differences between projected and actual results, and those differences may be material. The Property may be withdrawn without notice. Neither Owner nor JLL accepts any liability for any loss or damage suffered by any party resulting from reliance on this information. If the recipient of this information has signed a confidentiality agreement regarding this matter, this information is subject to the terms of that agreement. ©2019 Jones Lang LaSalle IP, Inc. All rights reserved.

\* Broker

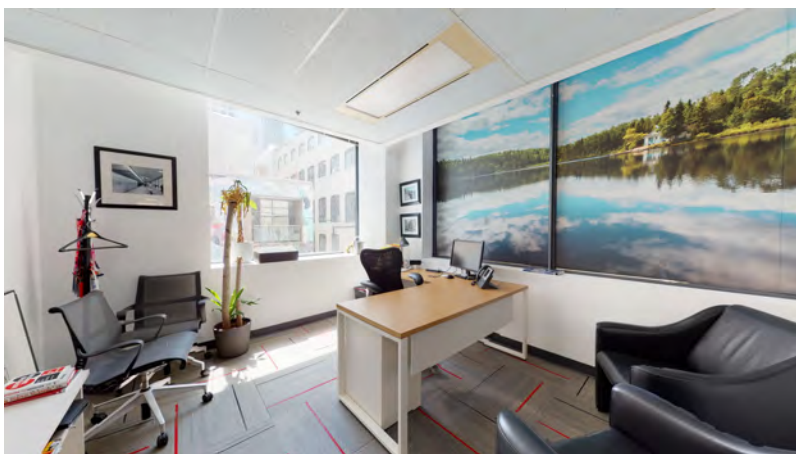
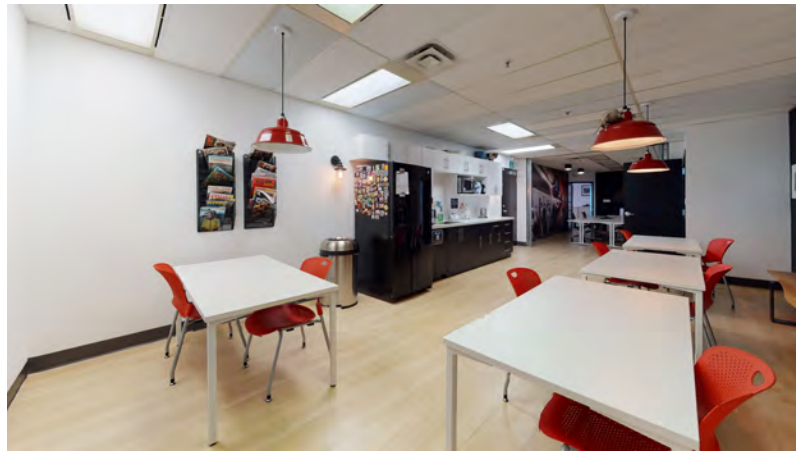
\*\* Sales Representative



CLICK TO VIEW THE  
VIRTUAL TOUR



# For Sublease



**Jonathan Redrupp\***  
+1 (416) 803-8425  
[Jonathan.Redrupp@am.jll.com](mailto:Jonathan.Redrupp@am.jll.com)

**Michelle McLaughlin\*\***  
+1 (905) 320-3351  
[Michelle.McLaughlin@am.jll.com](mailto:Michelle.McLaughlin@am.jll.com)

**Henry Stafferton\*\***  
+1 (416) 459-0522  
[Henry.Stafferton@am.jll.com](mailto:Henry.Stafferton@am.jll.com)

Although information has been obtained from sources deemed reliable, neither Owner nor JLL makes any guarantees, warranties or representations, express or implied, as to the completeness or accuracy as to the information contained herein. Any projections, opinions, assumptions or estimates used are for example only. There may be differences between projected and actual results, and those differences may be material. The Property may be withdrawn without notice. Neither Owner nor JLL accepts any liability for any loss or damage suffered by any party resulting from reliance on this information. If the recipient of this information has signed a confidentiality agreement regarding this matter, this information is subject to the terms of that agreement. ©2019 Jones Lang LaSalle IP, Inc. All rights reserved.

\* Broker  
\*\* Sales Representative