



# For Sublease

## 2 Carlton St

Suite 600  
Toronto, ON



**8,287 SF Available**

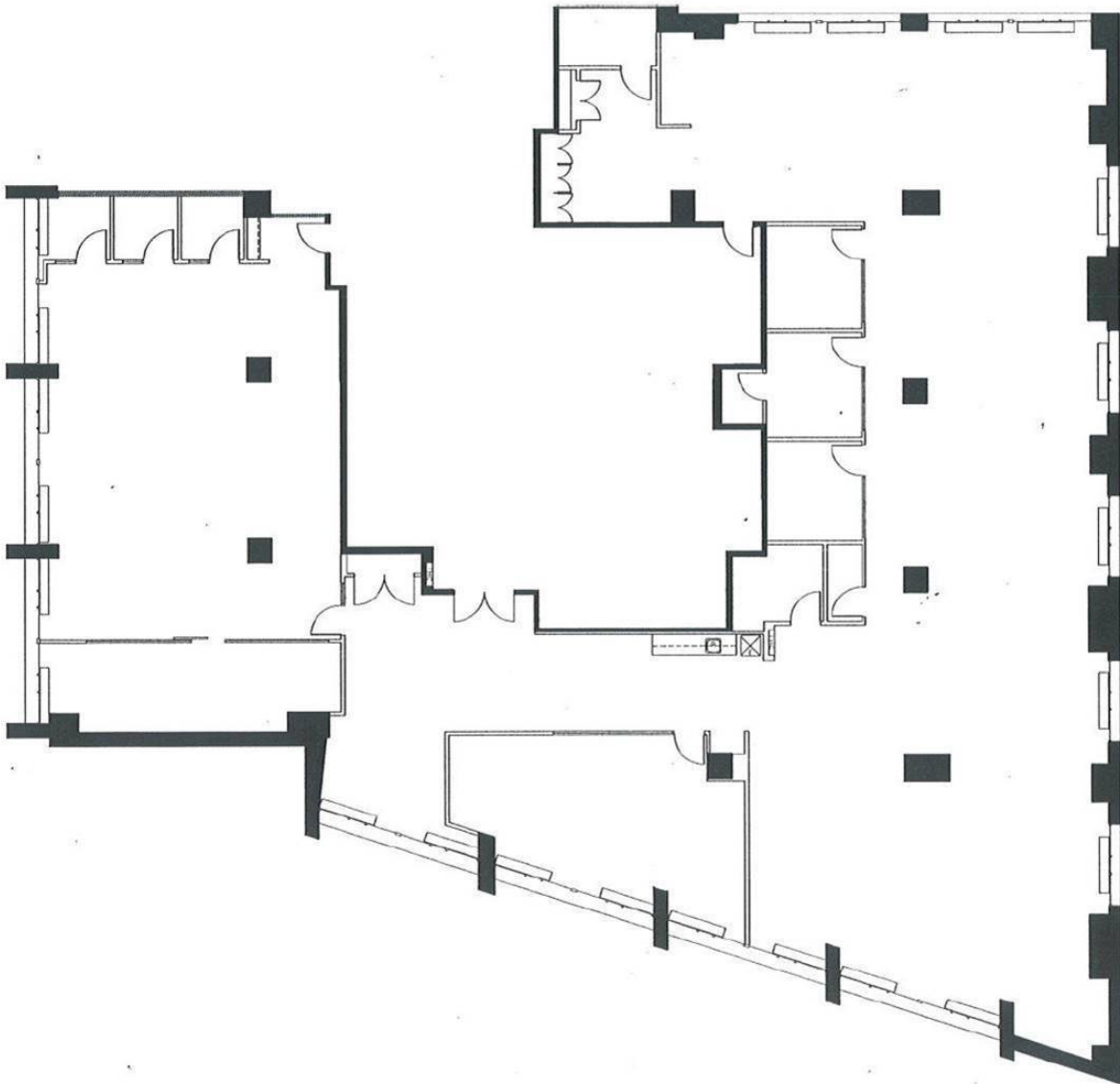


## Overview

<b>SUITE</b>	600
<b>SIZE</b>	8,287 SF
<b>AVAILABILITY</b>	Immediate
<b>TERM</b>	Expires October 30, 2023
<b>ASKING NET RENT</b>	Contact Listing Agents
<b>ADDITIONAL RENT</b>	\$22.96 PSF

## Sublease Highlights

- Open concept 'tech' build-out
- Furniture can be made available
- New finishes in common areas, washrooms and elevators
- Direct access to TTC, GO Transit, City Centre Airport, DVP/Gardiner, and Highway 401
- Located within walking distance to a variety of amenities including major retailers, eateries and entertainment






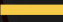



## Contact

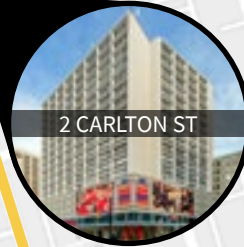
Michael Seetner\*  
Vice President  
+1 (416) 304 6011  
Michael.Seetner@am.jll.com

Ethan Case\*  
Associate, Office Leasing  
+1 (647) 268 0684  
Ethan.Case@am.jll.com



## TRANSIT MAP

-  TTC Subway Station
-  TTC Line 1
-  TTC Streetcar
-  Go Transit
-  Gardiner Expressway



Walk Score



Transit Score



Bike Score



### Contact

Michael Seetner\*  
Vice President  
+1 (416) 304 6011  
Michael.Seetner@am.jll.com

Ethan Case\*  
Associate, Office Leasing  
+1 (647) 268 0684  
Ethan.Case@am.jll.com

