

\$1.50
PSF/ANNUM
*Bonus
Commission*

For Sub-lease

111 George Street

Modern Plug & Play Space in Downtown East

PROPERTY DETAILS

SIZE:
4,538 SF

SUITE:
201

TERM:
May 31, 2022 or May 31, 2025

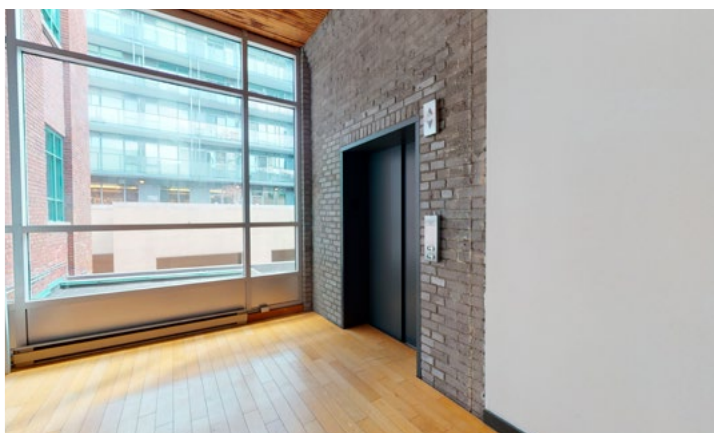
NET RENT:
Contact Listing Agents

AVAILABILITY:
Immediate

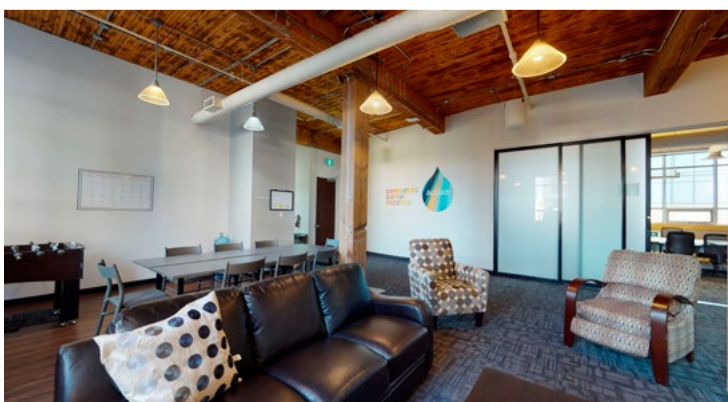
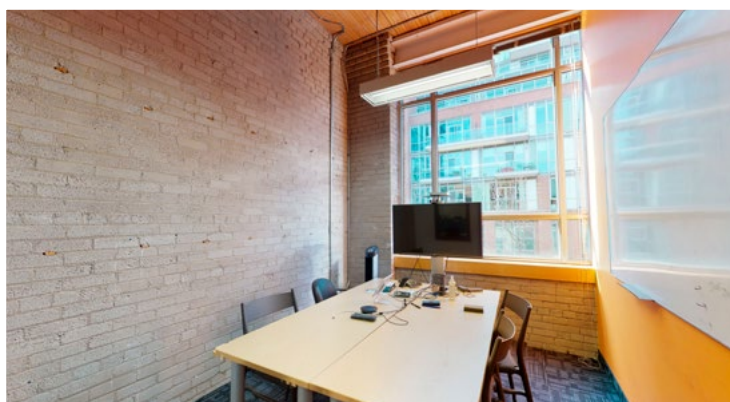
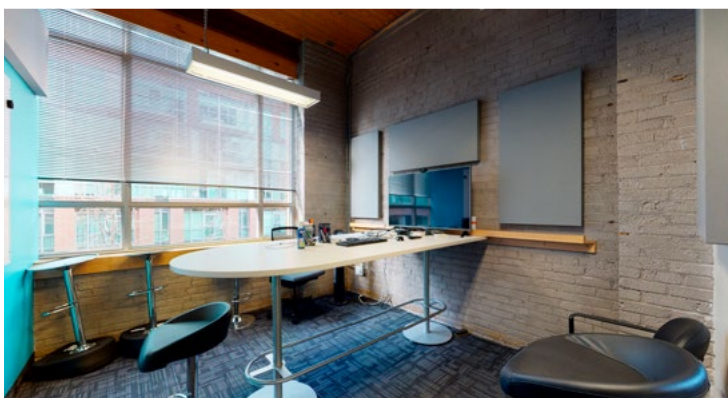
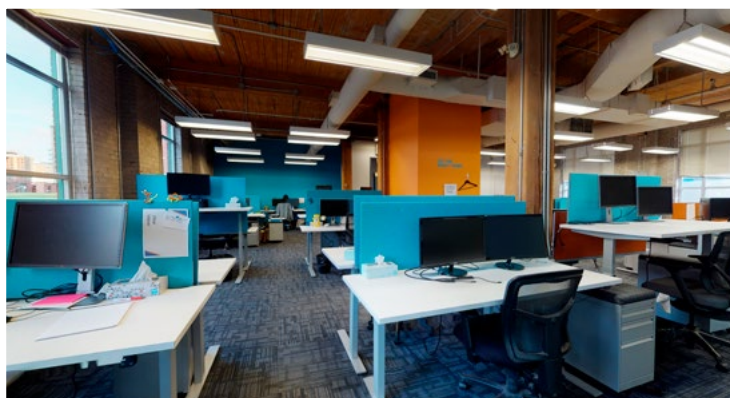
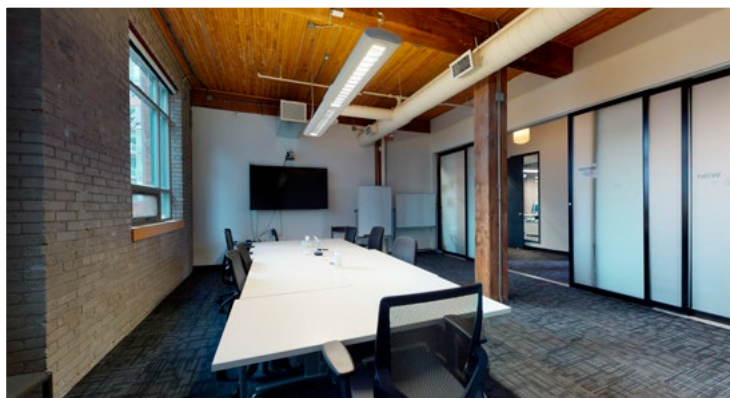
ADDITIONAL RENT:
\$15.98 PSF (2021 est.)

SPACE HIGHLIGHTS

- Plug & Play space
- Furniture available
- 5-minute walk from the heart of the Financial Core
- Modern brick and beam space
- Mix of work stations, private offices, meeting rooms, and kitchenette
- 1 Surface parking stall



The Space



For more information, contact:

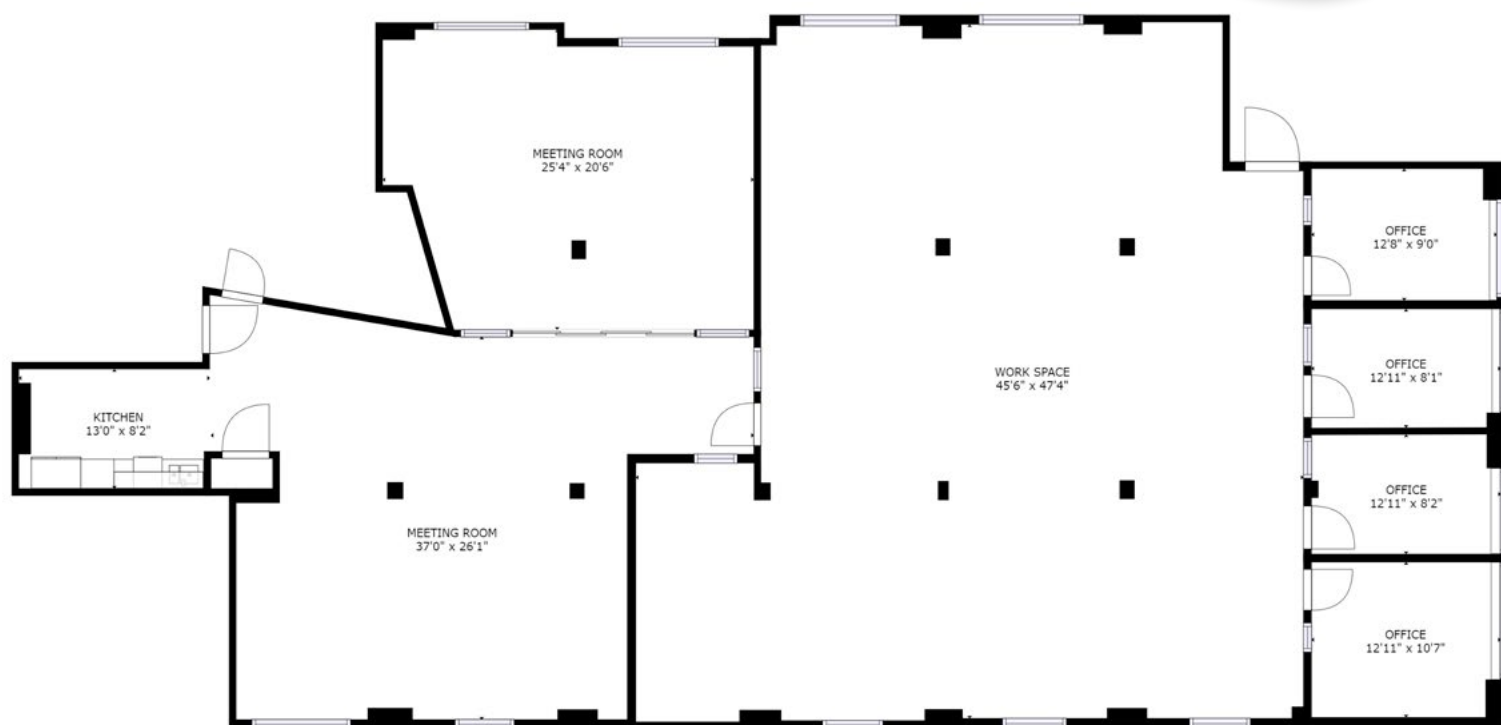
Matthew McCusker*
Transaction Manager
Tenant Representation Group
+1 416 391 6981
matthew.mccusker@am.jll.com

Sam Meer**
Toronto Lead
Tenant Representation Group
+1 416 304 6045
sam.meer@am.jll.com

Floor Plan



Suite 201 | 4,538 SF



For more information, contact:

Matthew McCusker*
Transaction Manager
Tenant Representation Group
+1 416 391 6981
matthew.mccusker@am.jll.com

Sam Meer**
Toronto Lead
Tenant Representation Group
+1 416 304 6045
sam.meer@am.jll.com