



For Sublease

96 Mowat Ave

Spectacular multi-level turnkey loft in the heart of Liberty Village

Divisible to 8,511 SF, 18,426 SF, or 26,937 SF

Overview

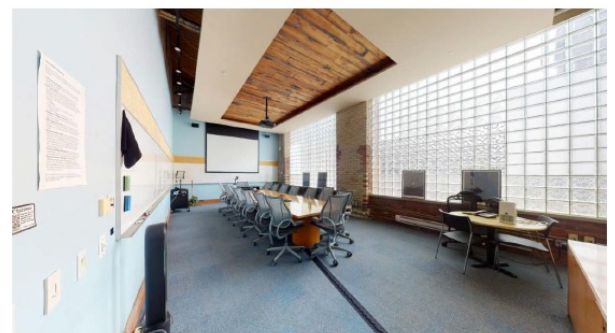
SIZE	26,937 sq.-ft (Divisible)
SUITE	Ground Floor - 18,426 SF Second Floor - 8,511 SF
AVAILABLE	Immediate
NET RENT	Contact List Agents
TERM	December 30, 2030
ADDITIONAL RENT	\$9.45 PSF (2021 est.)



CO-OP COMMISSION: \$1.50 PSF/A

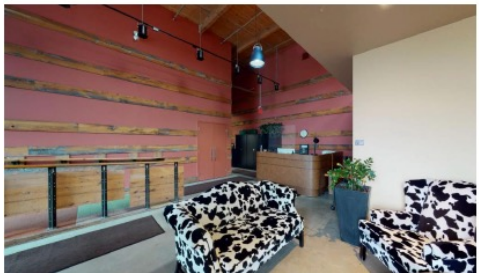
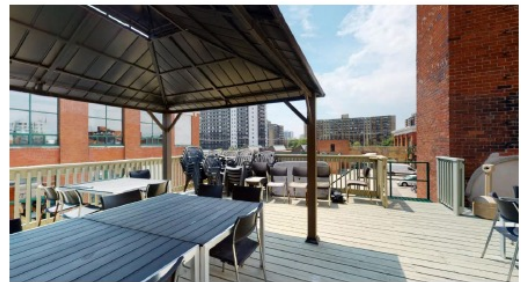
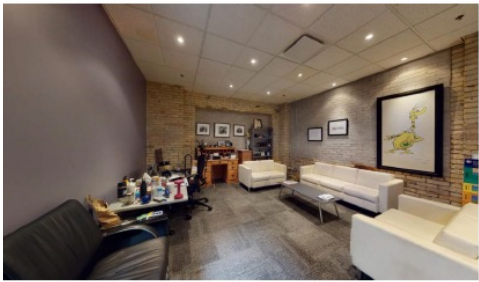
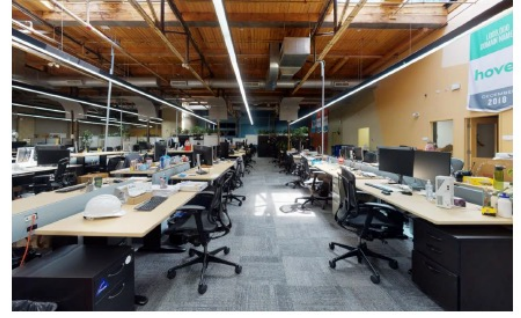
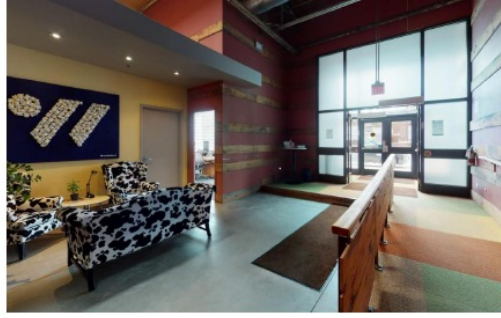
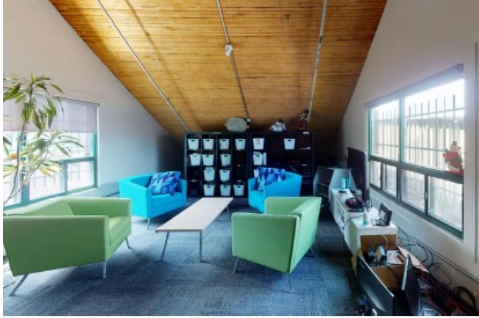
Space Highlights

- Premium multi-level Brick & Beam loft in the heart of Liberty Village
- Exclusive private terrace complete with furniture and BBQs
- Ground floor features 150 open workstations, 11 private offices, 2 boardrooms, kitchen, copy/print area, and accessible private washrooms
- Suite 200 features 75 open workstations, 5 private offices, 1 boardroom, kitchen, copy/print area, and accessible private washrooms
- High exposure street-level signage and unique branding opportunity
- Steps to King Streetcar and close proximity to Exhibition GO
- Up to 24 surface parking stalls available
- Direct access through multiple private entrances



96 Mowat Ave

The Space



For more information, contact:

Jon Pezim*
Executive Vice President
+1 (416) 304-6032
jon.pezim@jll.com

Graham Stirling*
Vice President
+1 (647) 964-4307
graham.stirling@jll.com

Adam Harun*
Associate
+1 (416) 238-4806
adam.harun@jll.com

Cali Hopkins*
Associate
+1 (647) 505-6502
cali.hopkins@jll.com

Although information has been obtained from sources deemed reliable, neither Owner nor JLL makes any guarantees, warranties or representations, express or implied, as to the completeness or accuracy as to the information contained herein. Any projections, opinions, assumptions or estimates used are for example only. There may be differences between projected and actual results, and those differences may be material. The Property may be withdrawn without notice. Neither Owner nor JLL accepts any liability for any loss or damage suffered by any party resulting from reliance on this information. If the recipient of this information has signed a confidentiality agreement regarding this matter, this information is subject to the terms of that agreement. ©2023 Jones Lang LaSalle IP, Inc. All rights reserved.

** Broker * Sales Representative

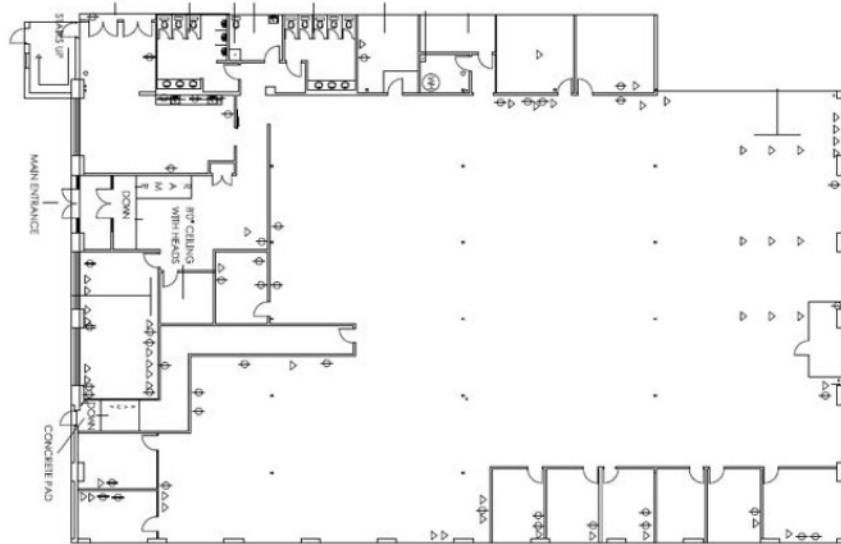
96 Mowat Ave

Floor Plan



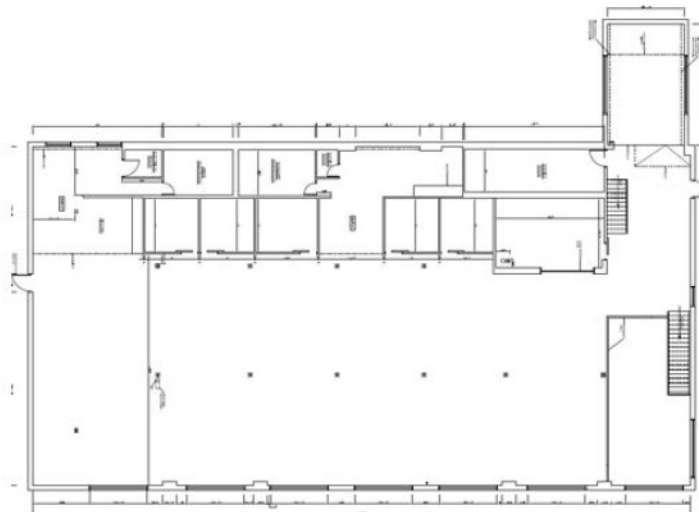
Ground Floor

18,426 SF



Second Floor

8,511 SF



For more information, contact:

Jon Pezim*
Executive Vice President
+1 (416) 304-6032
jon.pezim@jll.com

Graham Stirling*
Vice President
+1 (647) 964-4307
graham.stirling@jll.com

Adam Harun*
Associate
+1 (416) 238-4806
adam.harun@jll.com

Cali Hopkins*
Associate
+1 (647) 505-6502
cali.hopkins@jll.com

Although information has been obtained from sources deemed reliable, neither Owner nor JLL makes any guarantees, warranties or representations, express or implied, as to the completeness or accuracy as to the information contained herein. Any projections, opinions, assumptions or estimates used are for example only. There may be differences between projected and actual results, and those differences may be material. The Property may be withdrawn without notice. Neither Owner nor JLL accepts any liability for any loss or damage suffered by any party resulting from reliance on this information. If the recipient of this information has signed a confidentiality agreement regarding this matter, this information is subject to the terms of that agreement. ©2023 Jones Lang LaSalle IP, Inc. All rights reserved.

** Broker * Sales Representative