



9,323 s.f.
Available for sublease

116 Spadina Ave

Brick & Beam Turnkey Opportunity



TORONTO, ON



Property Details

SIZE:

1st Floor - 7,411 SF
2nd Floor - 1,912 SF

AVAILABILITY:

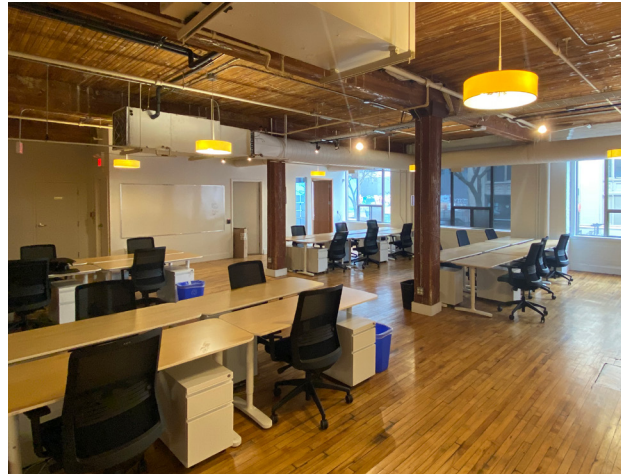
Immediate

TERM:

1st Floor - Nov 30, 2024
2nd Floor - Nov 30, 2024

SEMI GROSS RENT:

\$38.00 PSF



Space Highlights

- Tech ready built out space
- Turnkey opportunity with furniture
- Steps from Spadina & King streetcar lines
- Loads of natural light with windows on 2 sides
- Open workspace, 7 meeting rooms/offices, large boardroom off of reception, kitchen/lounge area, and games room



116 Spadina Ave

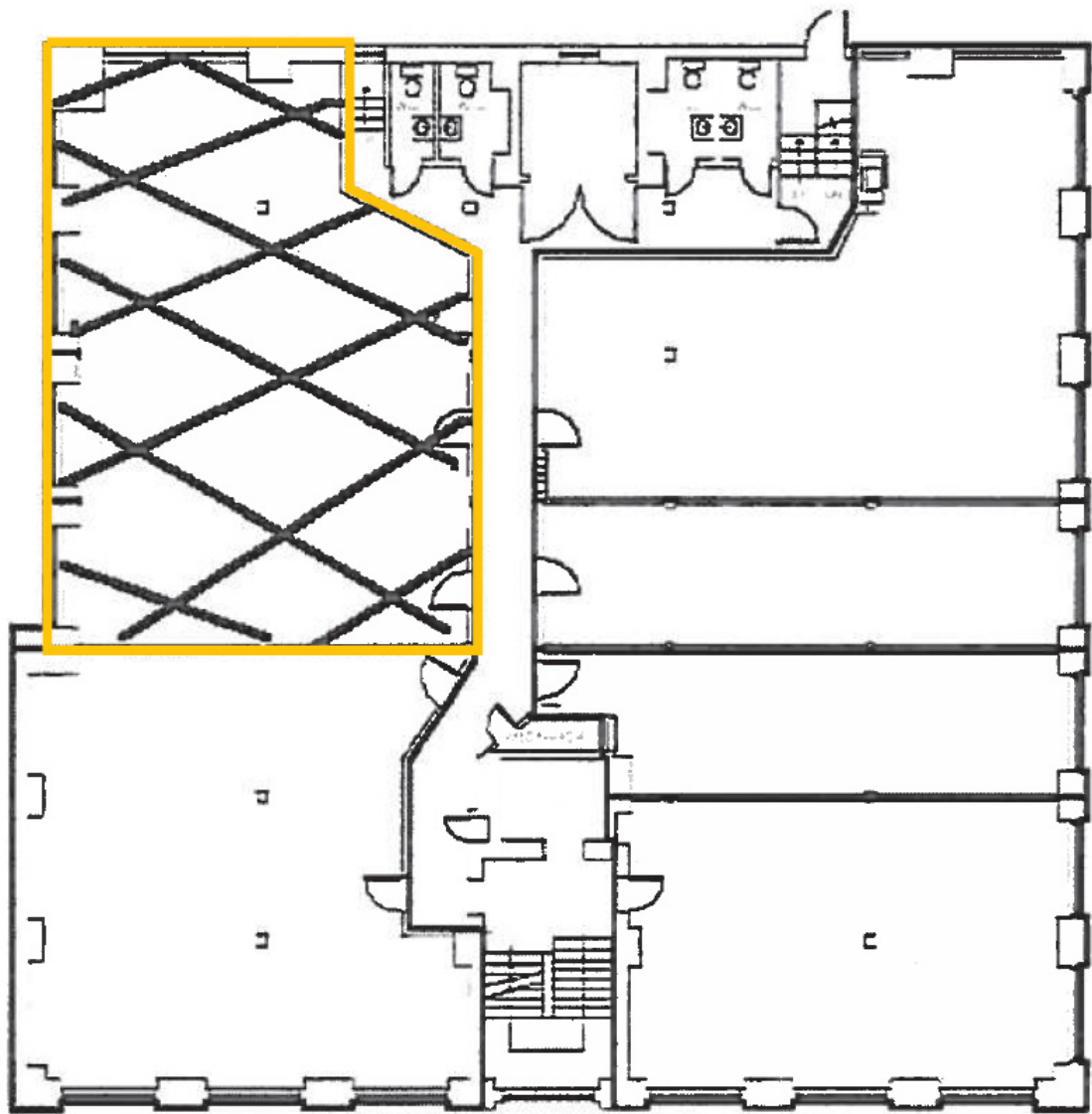
Toronto, ON



1st Floor



2nd Floor





116 Spadina Ave

Jonathan Redrupp**

Senior Vice President
+1 416 304 6043
Jonathan.Redrupp@jll.com

Ali Torabipour*

Vice President
+1 416 238 4743
Ali.Torabipour@jll.com

Henry Stafferton*

Associate
+1 416 459 0522
Henry.Stafferton@jll.com

Ethan Case*

Associate Vice President
+1 647 268 0684
Ethan.Case@jll.com

Toronto, ON - Head Office

22 Adeliade Street W, 26th Floor
Toronto, ON M5H 4E3
+1 416 304 6000

Although information has been obtained from sources deemed reliable, Owner, Jones Lang LaSalle, and/or their representatives, brokers or agents make no guarantees as to the accuracy of the information contained herein, and offer the Property without express or implied warranties of any kind. The Property may be withdrawn without notice. If the recipient of this information has signed a confidentiality agreement regarding this matter, this information is subject to the terms of that agreement. ©2022. Jones Lang LaSalle. All rights reserved. *Sales Representative, **Broker

