



9050 Yonge St

Office Space for Sublease



Richmond Hill, ON



Property Details

AVAILABLE SPACE:

~~207 - 3,130 SF~~ **SUBLEASED**

~~216 - 5,882 SF~~ **SUBLEASED**

300 - 20,108 SF

400 - 20,073 SF

NET RENT:

Contact Listing Agents

ADDITIONAL RENT:

\$17.96 PSF (2023)

AVAILABLE:

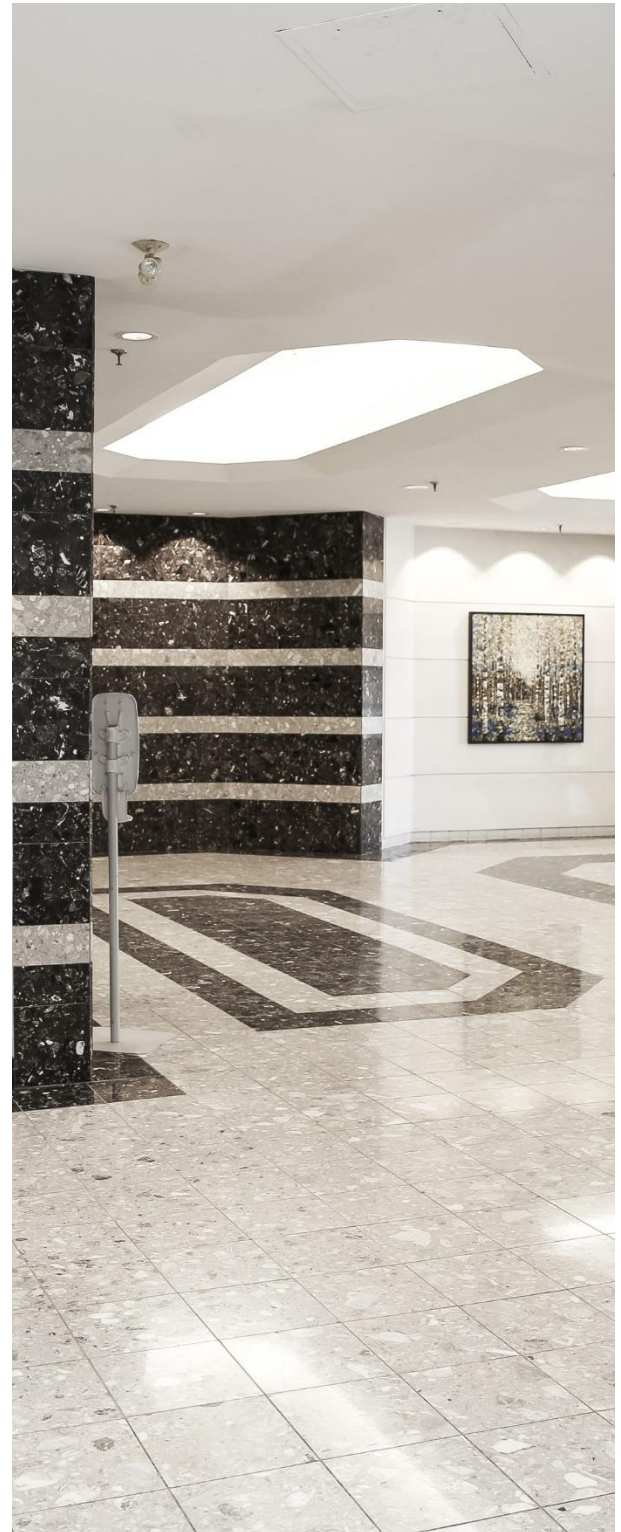
Immediately

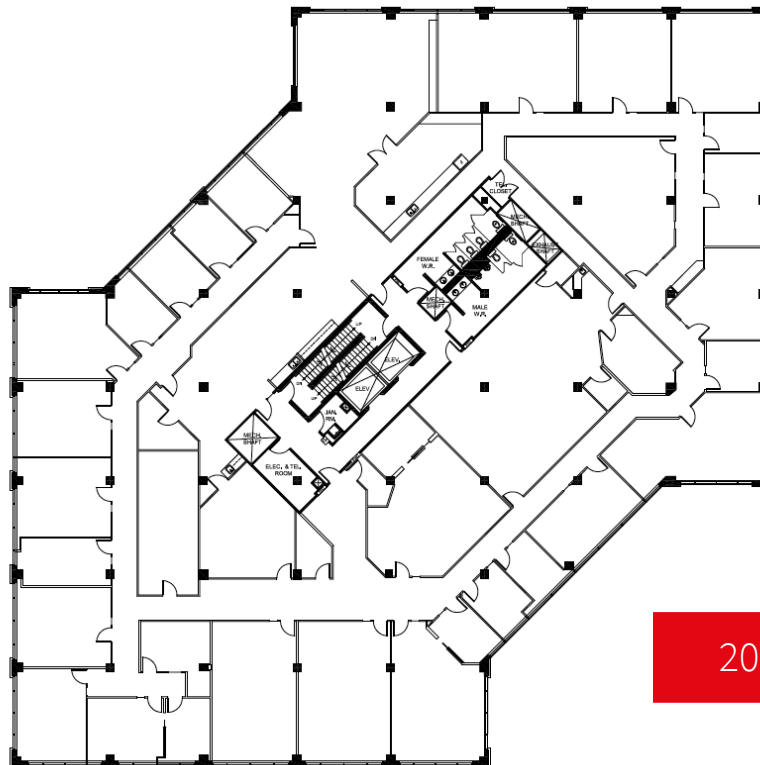
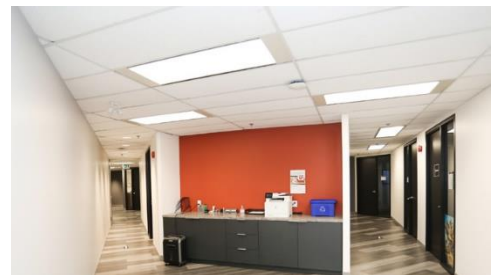
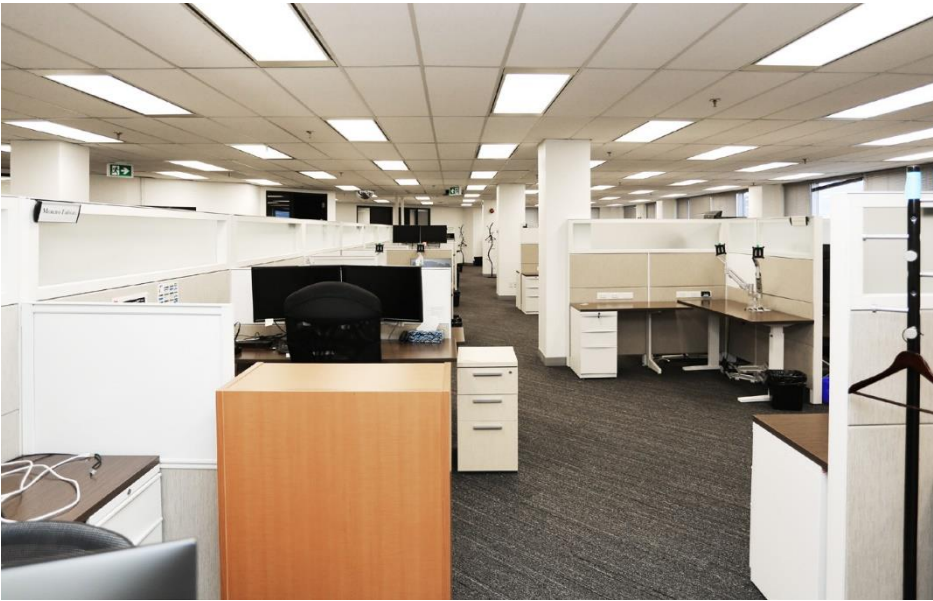
TERM:

Until September 29, 2024

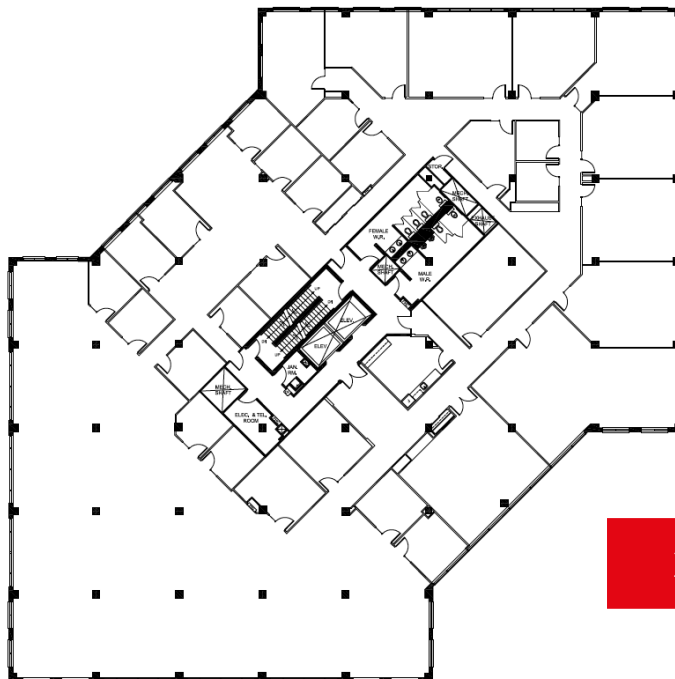
Space Highlights

- Plug and play Sublease opportunity with furniture
- Public transit located at the door step
- Close access to Highway 404, 407 & 7
- Convenient access to many amenities
- Surface and underground parking available

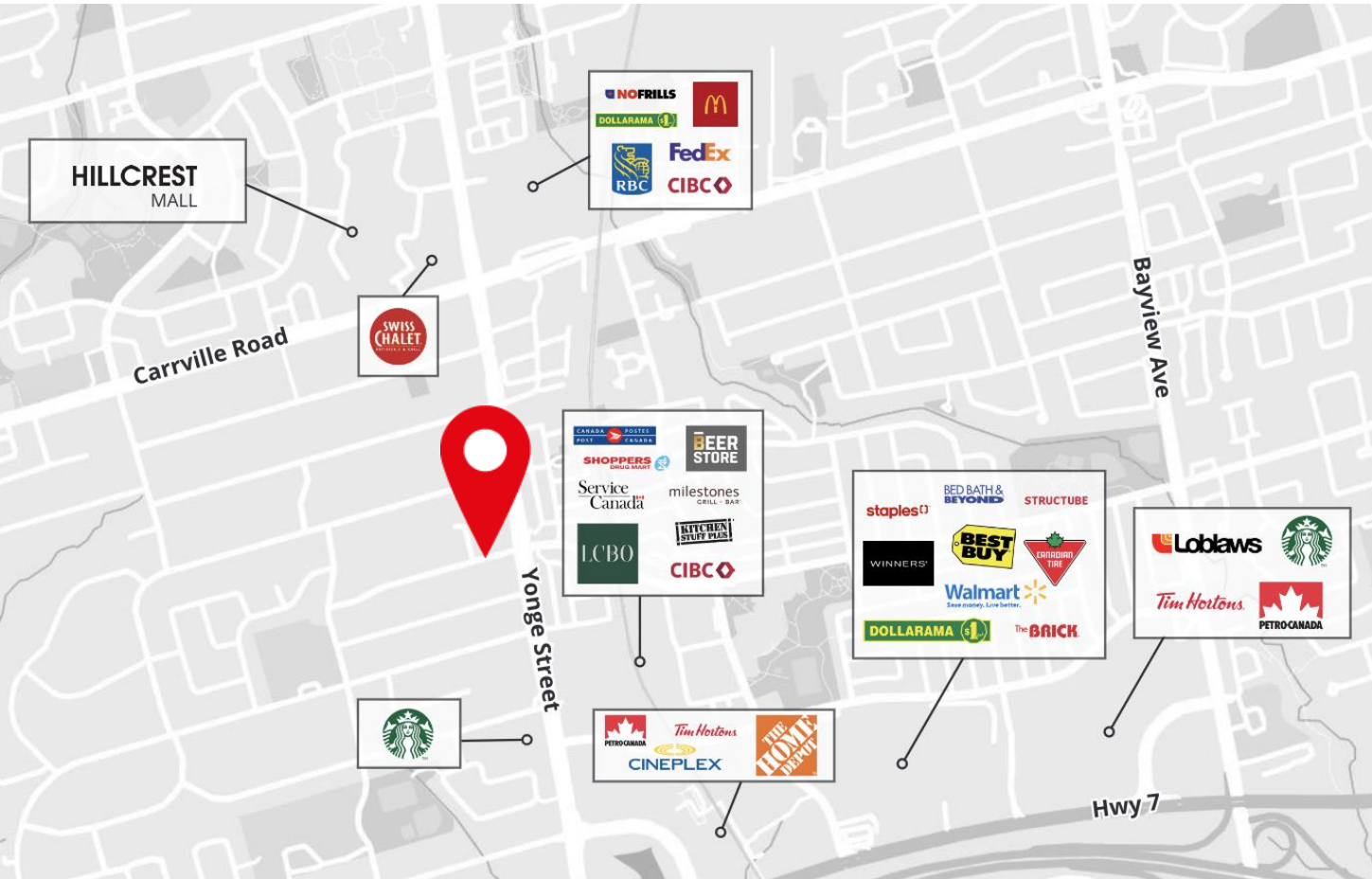




20,108 SF



20,073 SF



Amenities within 5km

358

Restaurants & Cafes

448

Retail

11

Hotels

14

Fitness Centres

61

Banks

22

Gas Stations



9050 Yonge St

Erik Bishop*

Associate Vice President
+1 416-569-7850
erik.bishop@jll.com

Glenn Thackeray*

Vice President
+1 647 970 9799
glenn.thackeray@jll.com

Erik Smith*

Senior Vice President
+1 647 339 7145
erik.smith@jll.com

Toronto, ON - North Office

235 Yorkland Boulevard, Suite 500
Toronto, ON M2J 4Y8
+1 647 728 0457

Although information has been obtained from sources deemed reliable, Owner, Jones Lang LaSalle, and/or their representatives, brokers or agents make no guarantees as to the accuracy of the information contained herein, and offer the Property without express or implied warranties of any kind. The Property may be withdrawn without notice. If the recipient of this information has signed a confidentiality agreement regarding this matter, this information is subject to the terms of that agreement. ©2022. Jones Lang LaSalle. All rights reserved. *Sales Representative, **Broker

