



For Lease

1190 Homer Street

Vancouver, BC



OFFICE SPACE FROM
5,000 SF - 19,365 SF

Mark Trepp*

Executive Vice President

+1 604 998 6035

mark.trepp@jll.com

Corbin MacDonald*

Vice President

+1 604 998 6034

corbin.macdonald@jll.com

*Personal Real Estate Corporation

THE LOCATION

Strategically located in the heart of Yaletown, steps away from the Canada Line rapid transit station. This multi-tenant building has the character of brick and beam heritage construction and the efficiency of modern office construction. The ground floor, split over two levels, includes restaurant and retail tenants. The office component has full floor office layouts. Other amenities include elevators and bike storage.



100
Rider’s Paradise



85
Very Bikeable



97
Walker’s Paradise

SALIENT DETAILS

BASIC RENT

ADD’L RENT (2024)

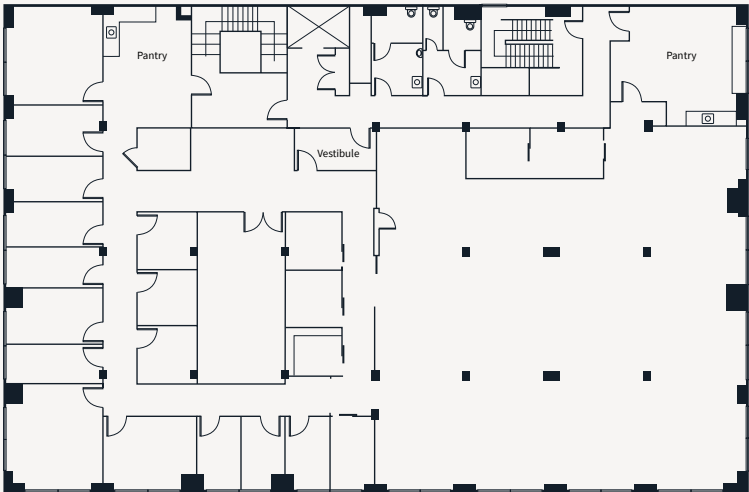
Contact the listing agents

\$18.67 psf/pa

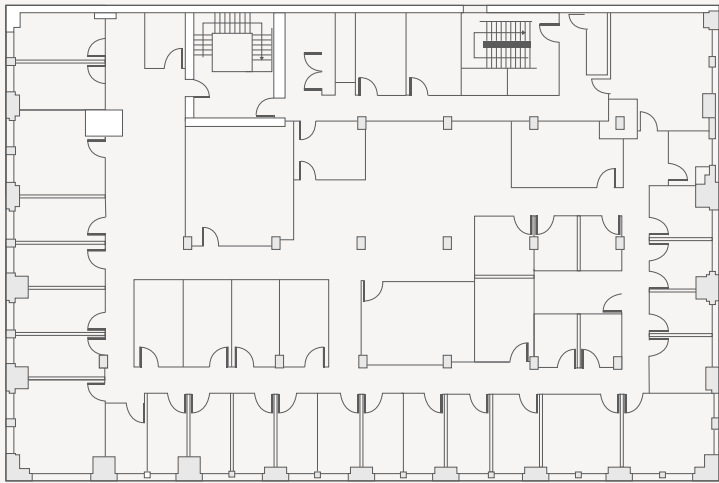
SUITE DETAILS

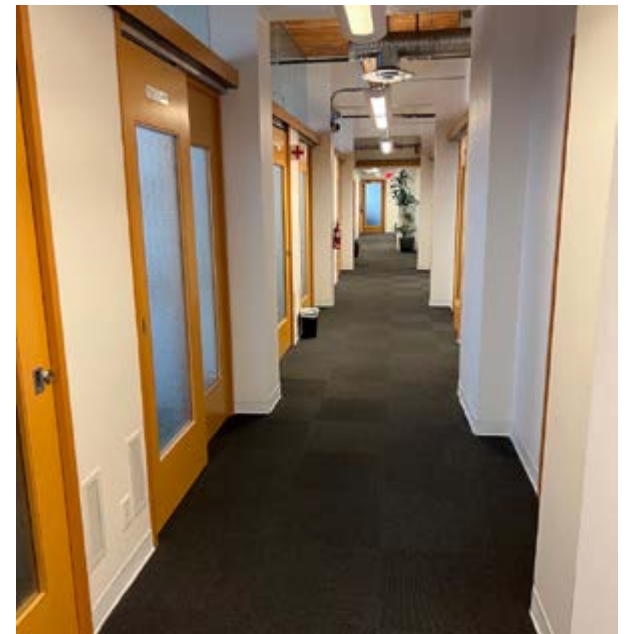
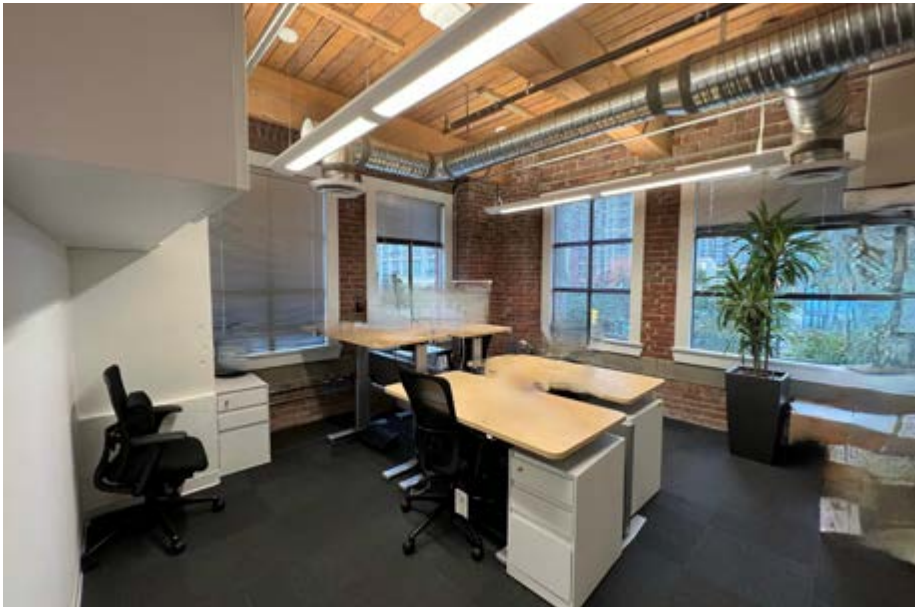
SUITE	SF	AVAILABILITY	COMMENTS
3rd Floor	9,677 sf	Immediately	Full floor with glass on three sides. Can be demised to 5,000 sf.
4th Floor	9,688 sf	Immediately	Full floor with glass on three sides. Can be demised to 5,000 sf.

3rd Floor



4th Floor





Nearby Amenities

WELLNESS

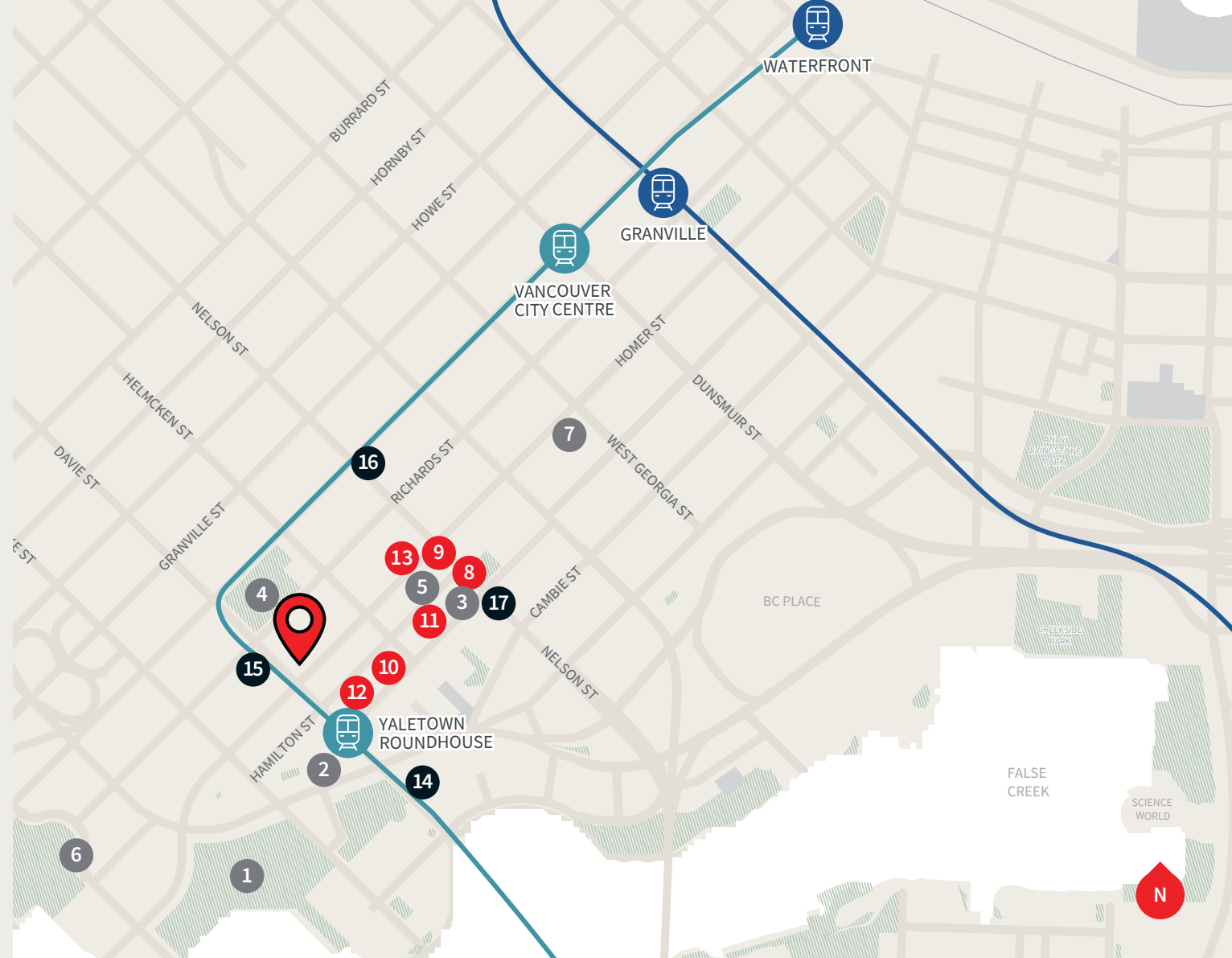
1. David Lam Park
2. YVR Cycle Spin Studio
3. Skoah Yaletown
4. Emery Barnes Park
5. YYOGA
6. Seawall
7. Kondi Fitness

FOOD & FUN

8. Earls Kitchen + Bar
9. The Parlour
10. Yaletown Brew Pub
11. Blue Water Cafe
12. The Flying Pig
13. The Keg Steakhouse + Bar

NECESSITIES

14. Urban Fare
15. Choices Market
16. Nesters Food Market
17. Shoppers Drug Mart



Corbin MacDonald*
Vice President
+1 604 998 6034
corbin.macdonald@jll.com

Mark Trepp*
Executive Vice President
+1 604 998 6035
mark.trepp@jll.com

