

# 625 Church St

TORONTO, ON



## Contact

**Sean Cline\***

Associate Vice President

+1 647-920-2113

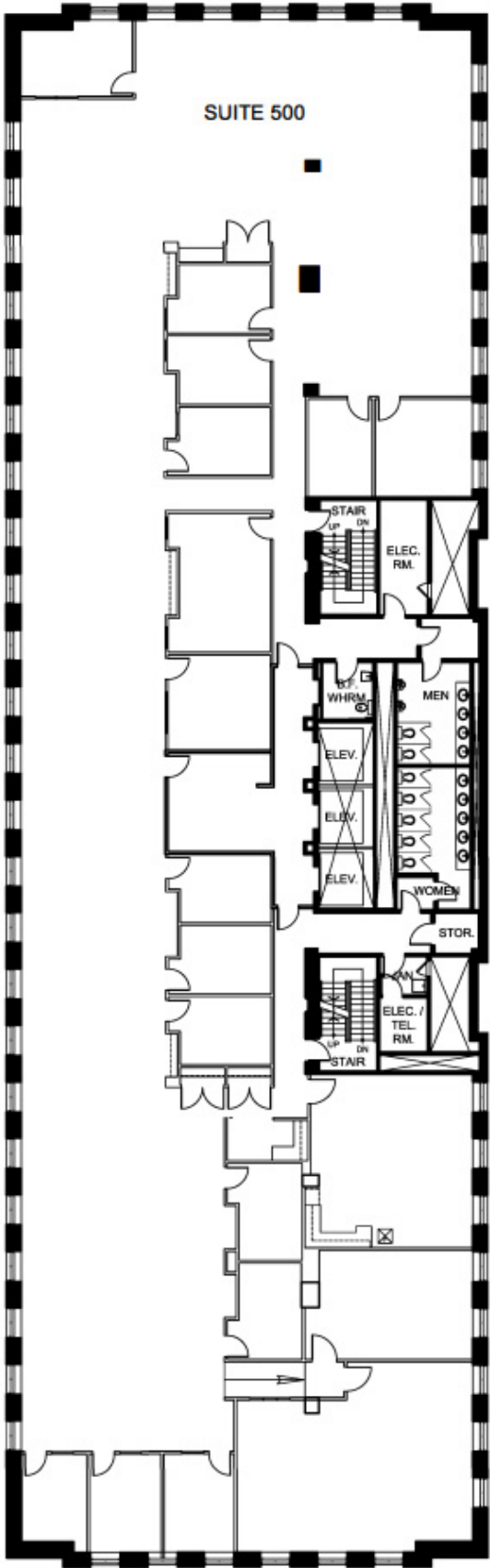
Sean.Cline@jll.com

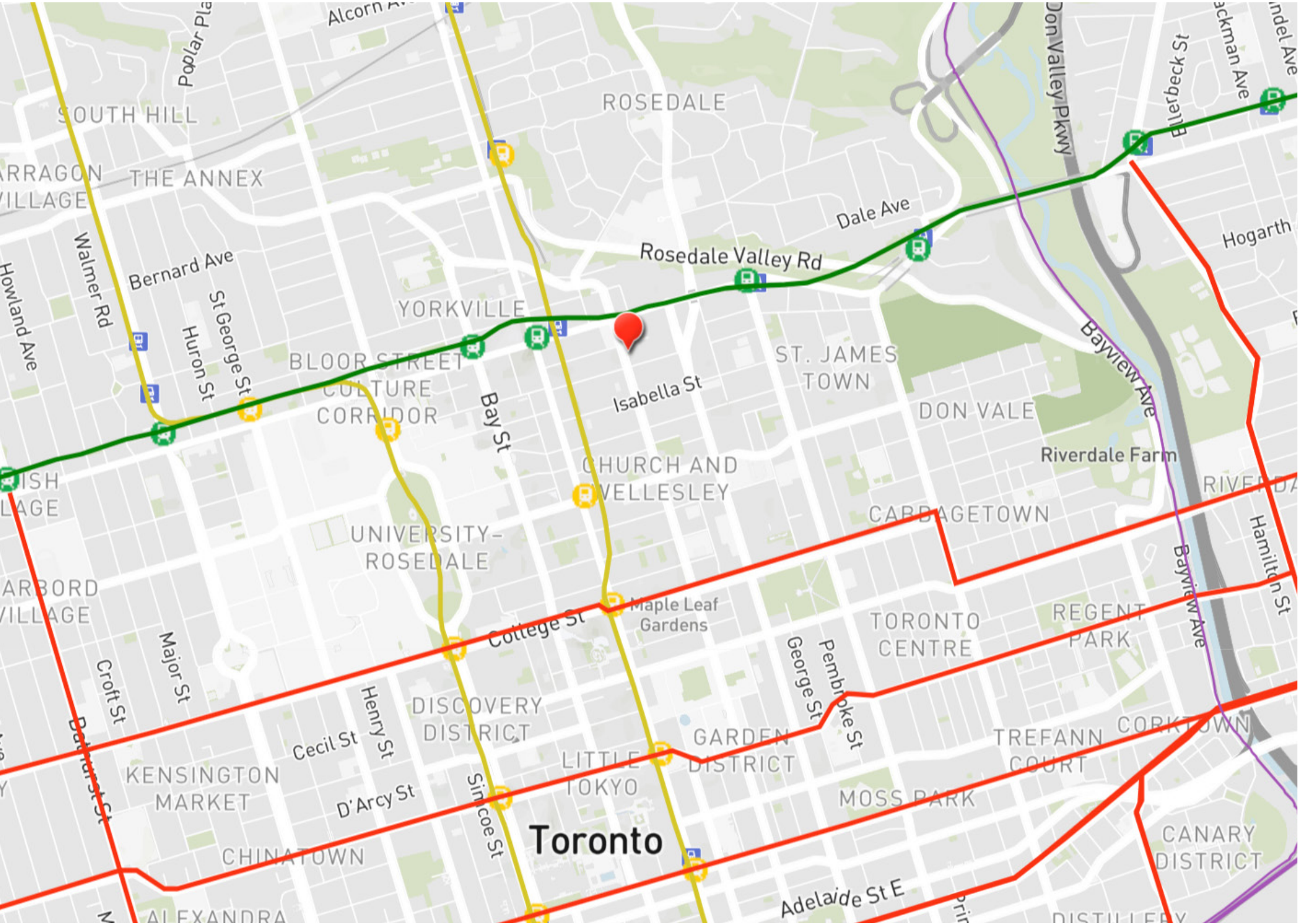


**Manulife**




Suite	500
Area (SF)	14,923
Rent (PSF)	\$25.00
Additional Rent Estimate (PSF)	\$23.46
Available	Immediate
Comments	<ul style="list-style-type: none"><li>Opportunity to lease entire 5th floor. Built out office space with traditional layout including perimeter and interior offices, open areas, kitchens, and storage rooms.</li></ul>





Amenities

-  **Public Transportation**  
5 minute walk to public transit
-  **Bicycle Parking**  
On-site
-  **Car Parking**  
1 per 1,700 SF
-  **Cafe**  
On-site

Awards and Certificates

-  **Fitwel**  
Viral Response Approval

# 625 Church St

TORONTO, ON

---

## Contact

### Sean Cline\*

Associate Vice President

+1 647-920-2113

Sean.Cline@jll.com



*Although information has been obtained from sources deemed reliable, JLL does not make any guarantees, warranties or representations, express or implied, as to the completeness or accuracy as to the information contained herein. Any projections, opinions, assumptions or estimates used are for example only. There may be differences between projected and actual results, and those differences may be material. JLL does not accept any liability for any loss or damage suffered by any party resulting from reliance on this information. If the recipient of this information has signed a confidentiality agreement with JLL regarding this matter, this information is subject to the terms of that agreement. ©2022. Jones Lang LaSalle IP, Inc. All rights reserved. \*Sales Representative*