

**FOR SUBLEASE**

# 210 King Street E

Up to 42,652 SF Available





Suite 200  
21,182 SF

Suite 300  
21,470 SF



Available  
30 Days Notice



Expiry  
July 16, 2030

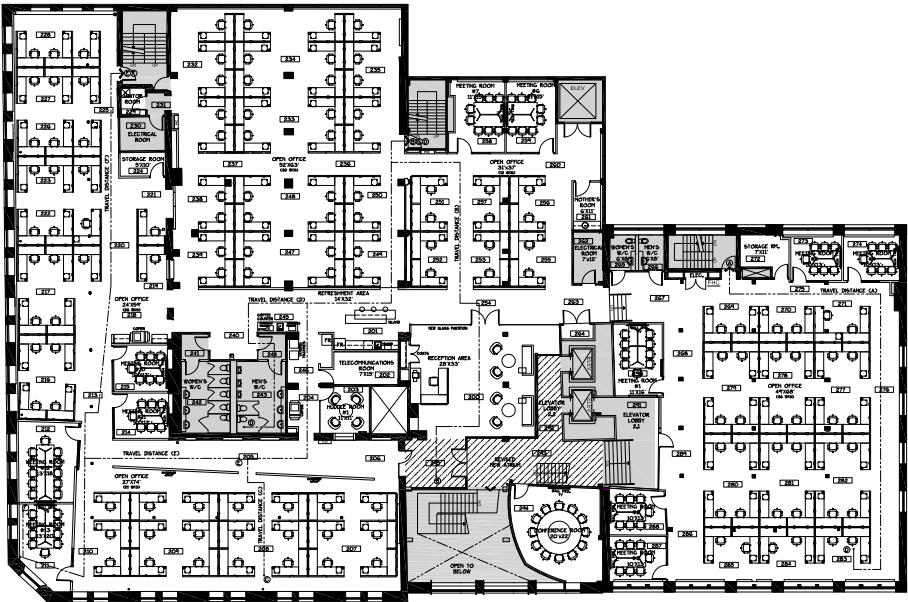


Net Rent  
Please contact  
Listing agents

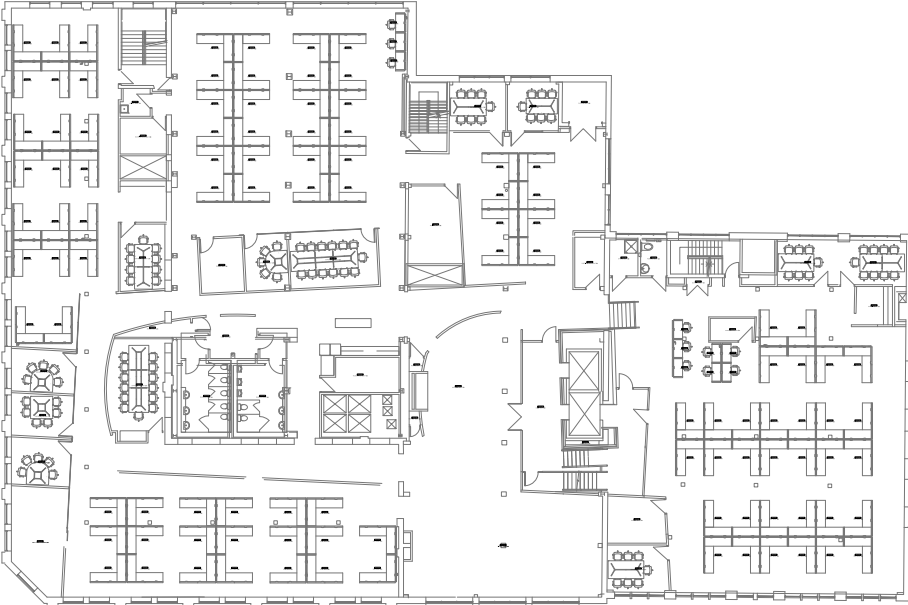


Additional  
Rent  
\$21.86 PSF  
(2024 estimate)  
\*Hydro is separately metered

Suite 200 | 21,182 SF

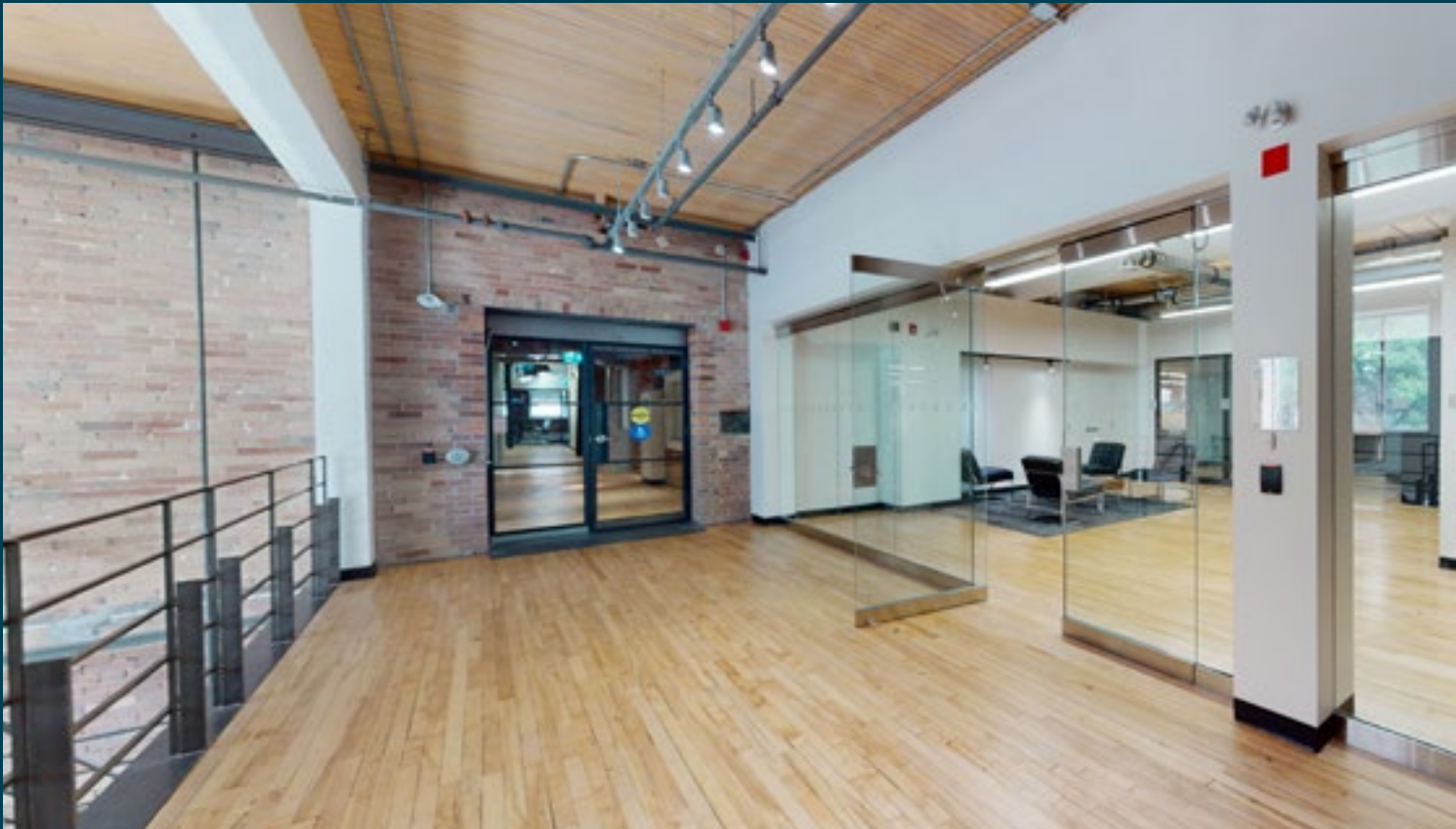


Suite 300 | 21,470 SF

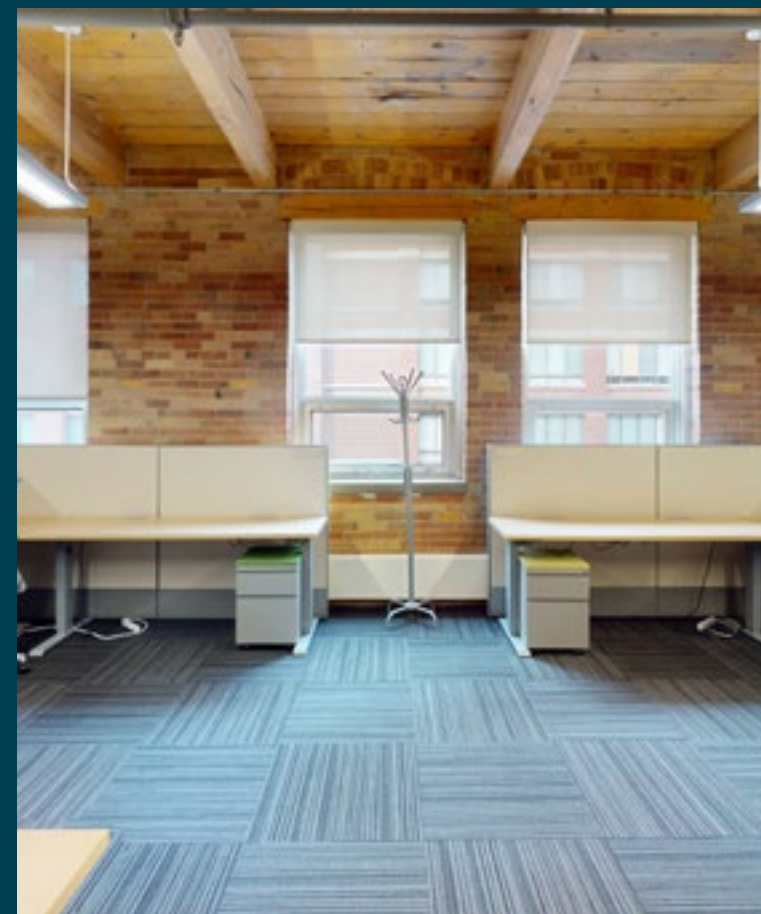
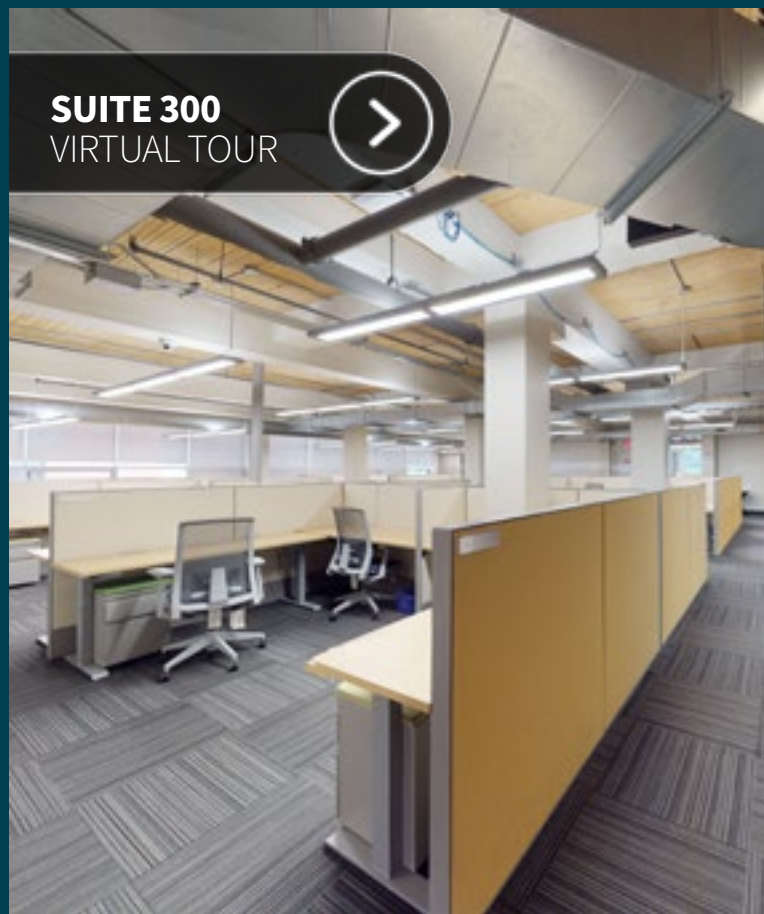
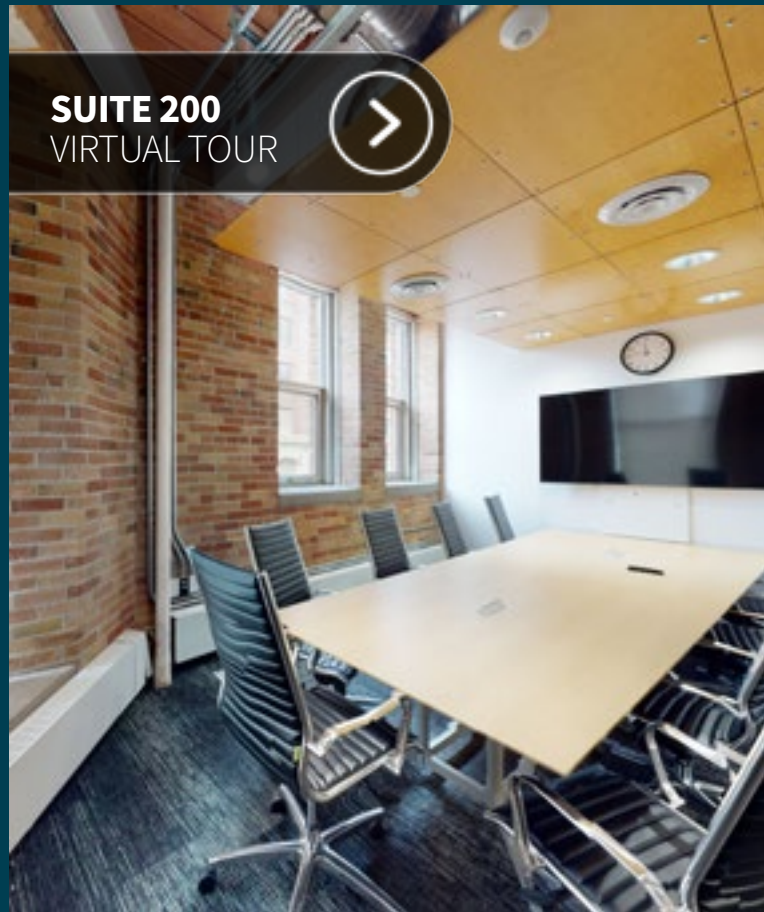


Highlights

- Turnkey Brick and Beam Space
- Contiguous up to 42,652 SF
- Large floorplates
- Mix of open concept and offices/meeting rooms
- Furniture is negotiable











**FOR SUBLEASE**

---

# 210 King Street E

Up to 42,652 SF Available

**Sean Cline\***

Associate Vice President

+1 (647) 920 2113

Sean.Cline@jll.com

**Kate Rizzardo\***

Senior Transaction Manager

+1 (604) 789 0016

Kate.Rizzardo@jll.com

**Rob Sweeney\***

Executive Vice President

+1 (416) 559 0722

Rob.Sweeney@jll.com

© 2024 Jones Lang LaSalle IP, Inc. All rights reserved. Information set out herein (the "Information") has not been verified by Jones Lang LaSalle Real Estate Services, Inc., Brokerage and any and all of its real estate agents/staff, and to all other divisions of the company (collectively "JLL"). JLL does not represent, warrant or guarantee the accuracy, correctness and completeness of the Information. Given the limitations of the investigations, inquiries and verification that JLL have undertaken, the reliability of this Information must be treated with a suitable degree of caution and neither JLL or any of their affiliates accept any liability or responsibility for the accuracy or completeness of the information contained herein and no reliance should be placed on the information contained in this document. JLL does not accept or assume any responsibility or liability, direct or consequential, for the Information or the recipient's reliance upon the Information. The recipient of the Information should take such steps as the recipient may deem necessary to verify the Information prior to placing any reliance upon the Information. The Information may change and any property described in the Information may be withdrawn from the market at any time without notice or obligation to the recipient from JLL. \*Sales Representative