





15900 Keele Street, King City, ON


Land investment opportunity


Great features

~90 acres of agricultural zoned land in King City, located near highway 400.

- 

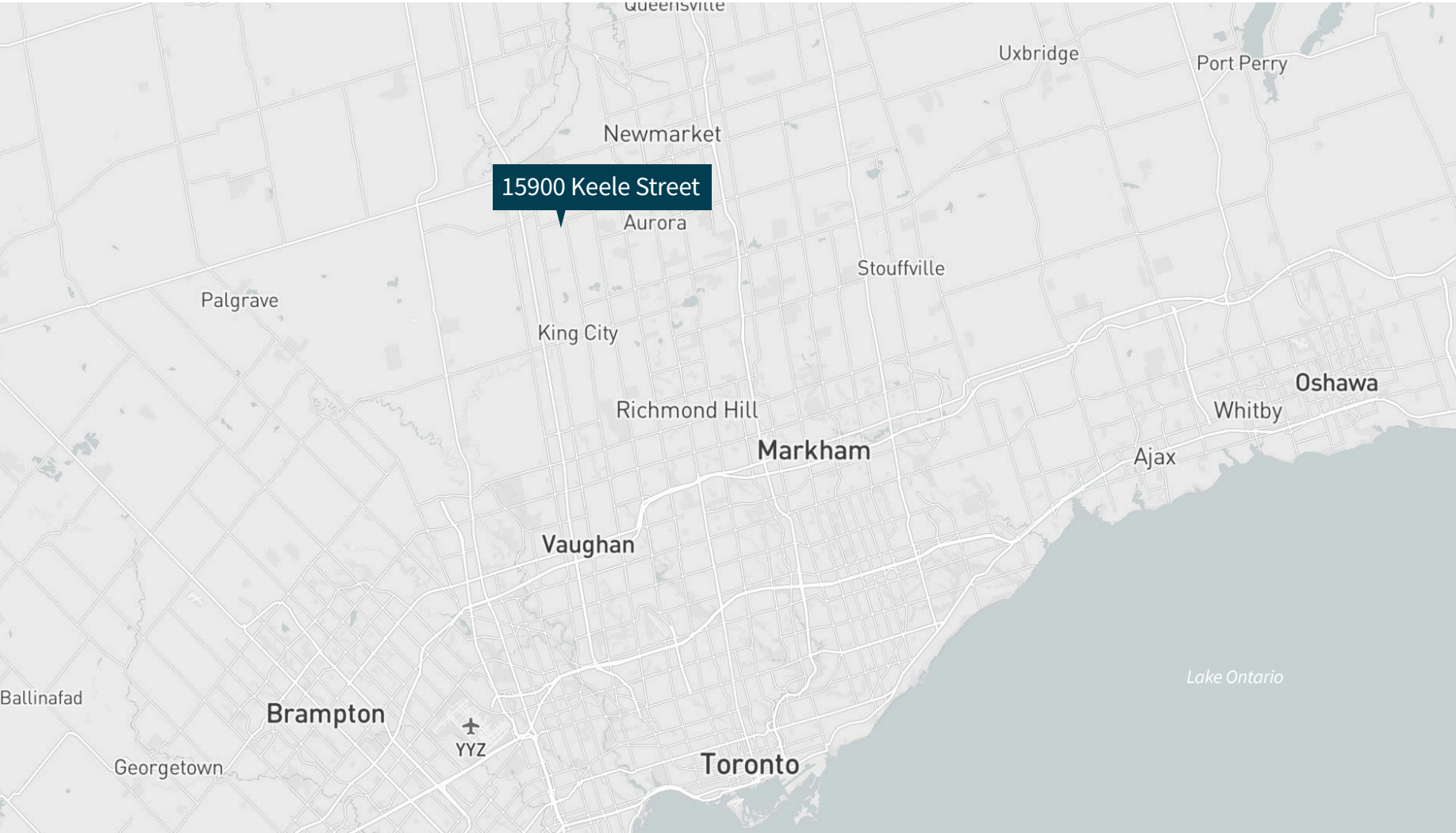
Excellent long term investment
- 

Easy access to Highway 400
- 

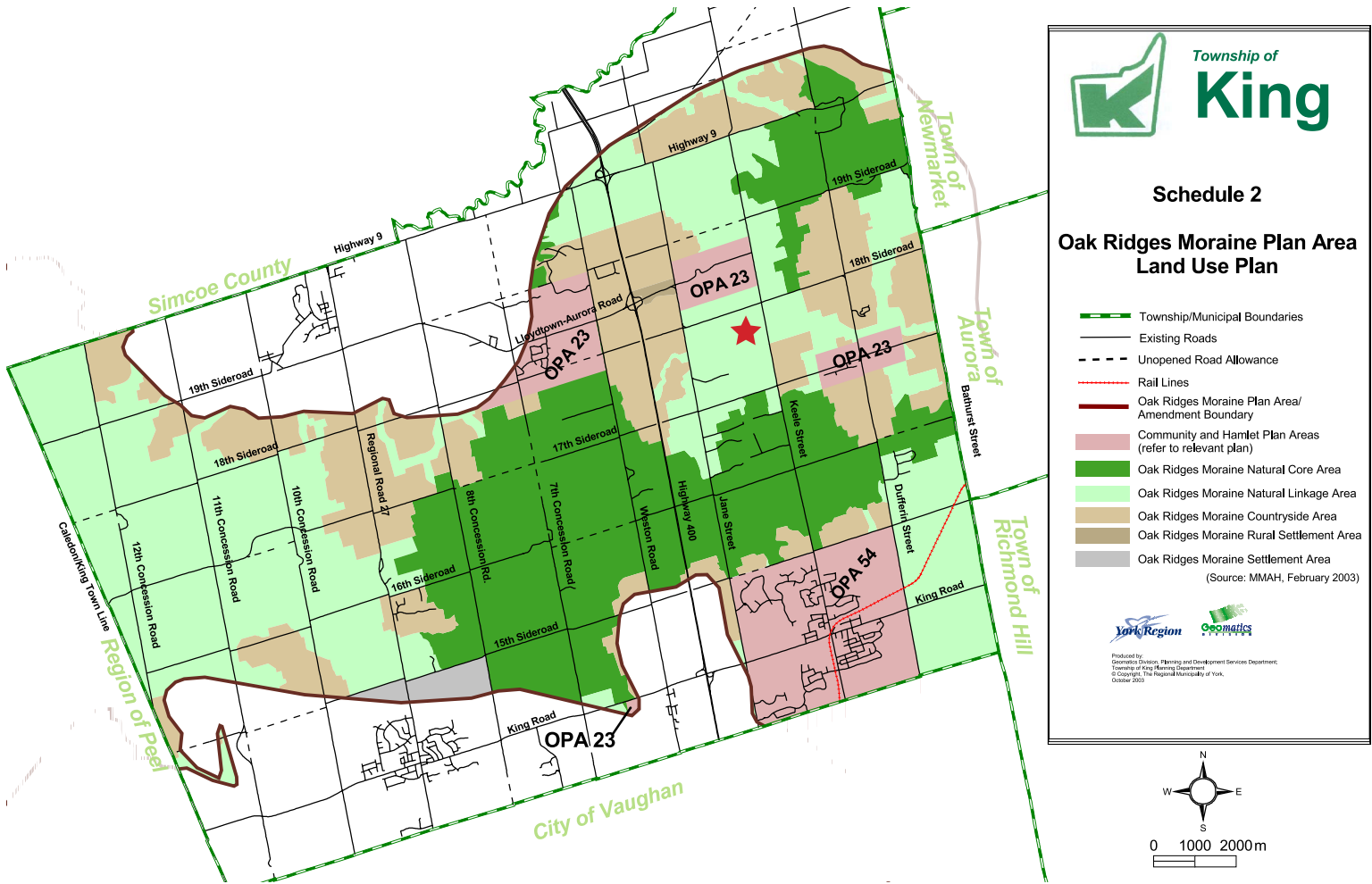
Corner property with two road frontages on Keele St. and Lloydtown Rd.
- 

Vendor financing available

Size	89.37 acres
Asking Price	\$12,000,000
Property Taxes	\$1,577.91 (2021)
Zoning	Agricultural
Services	No municipal services



Official plan



For all leasing inquiries



Max Smirnis*

Executive Vice President
Industrial Sales & Leasing

+1 647 728 0458

max.smirnis@jll.com

www.jll.com

Although information has been obtained from sources deemed reliable, Owner, Jones Lang LaSalle, and/or their representatives, brokers or agents make no guarantees as to the accuracy of the information contained herein, and offer the Property without express or implied warranties of any kind. The Property may be withdrawn without notice. The developer reserves the right to modify the information contained herein without prior notice. If the recipient of this information has signed a confidentiality agreement regarding this matter, this information is subject to the terms of that agreement. The developer reserves the right to modify the information contained herein without prior notice. E.&O.E. ©2023. Jones Lang LaSalle. All rights reserved. www.jll.ca *Sales Representative