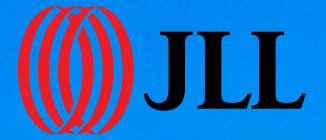


Retail

For Lease



171

EAST LIBERTY STREET
Toronto, ON





Property Summary

Set in the heart of one of Toronto’s fastest-growing neighbourhoods, The Liberty Market Building offers retailers the opportunity to capitalize on a steady stream of local and visiting clientele. This location provides a great opportunity to take advantage of the neighbourhood’s local demographic of young urban professionals and the building’s close proximity to downtown.

With more than 100,000 SF of main level retail space, The Liberty Market Building, a neighbourhood landmark, provides a unique retail mix. Featuring prominent exposure, beautiful character space, and over 50 office tenants, The Liberty Market Building offers a one-of-a-kind venue.



Highlights

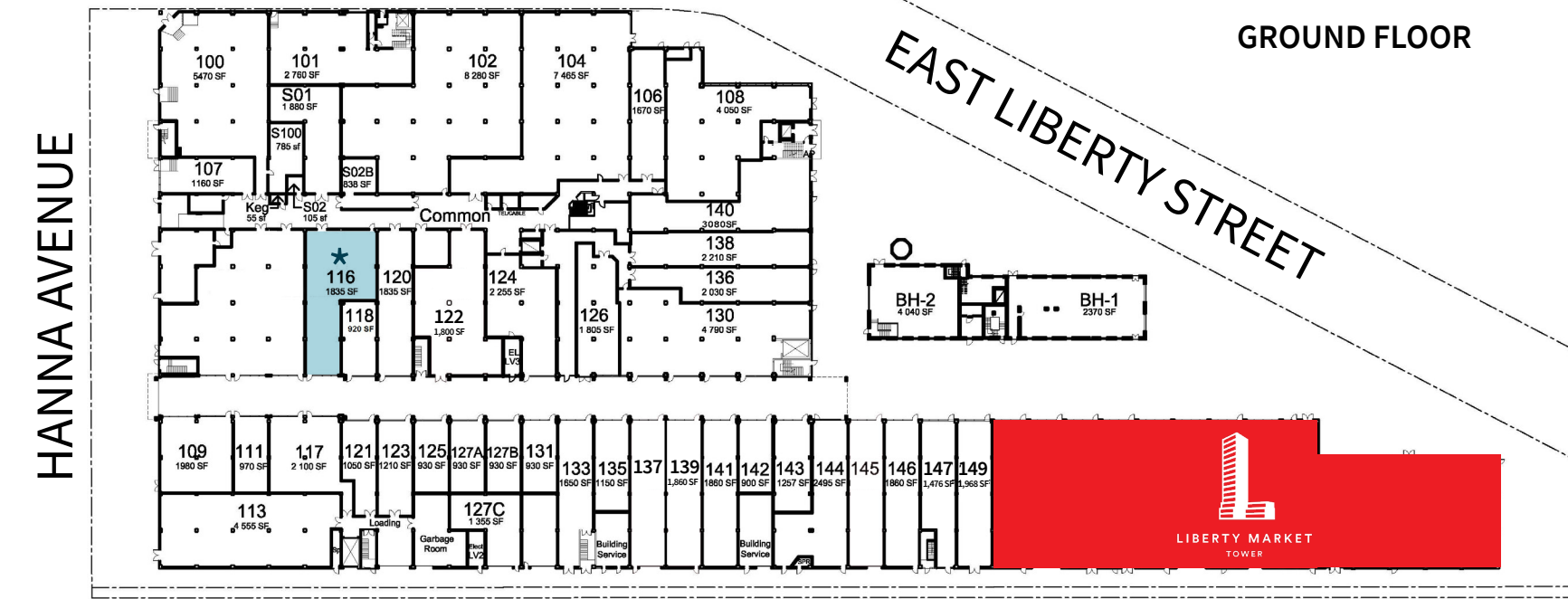
- Renovated mixed-use campus in the heart of Liberty Village
- Total complex comprised of over 295,000 SF of office and retail space
- Tenants include LOCAL Public Eatery, BMO, COBS Bread, Liberty Soho, Aloette, and Bulk Barn
- Excellent TTC and GO Station access
- Ample public parking on site
- Green ‘P’ surface parking immediately west of the property

Details

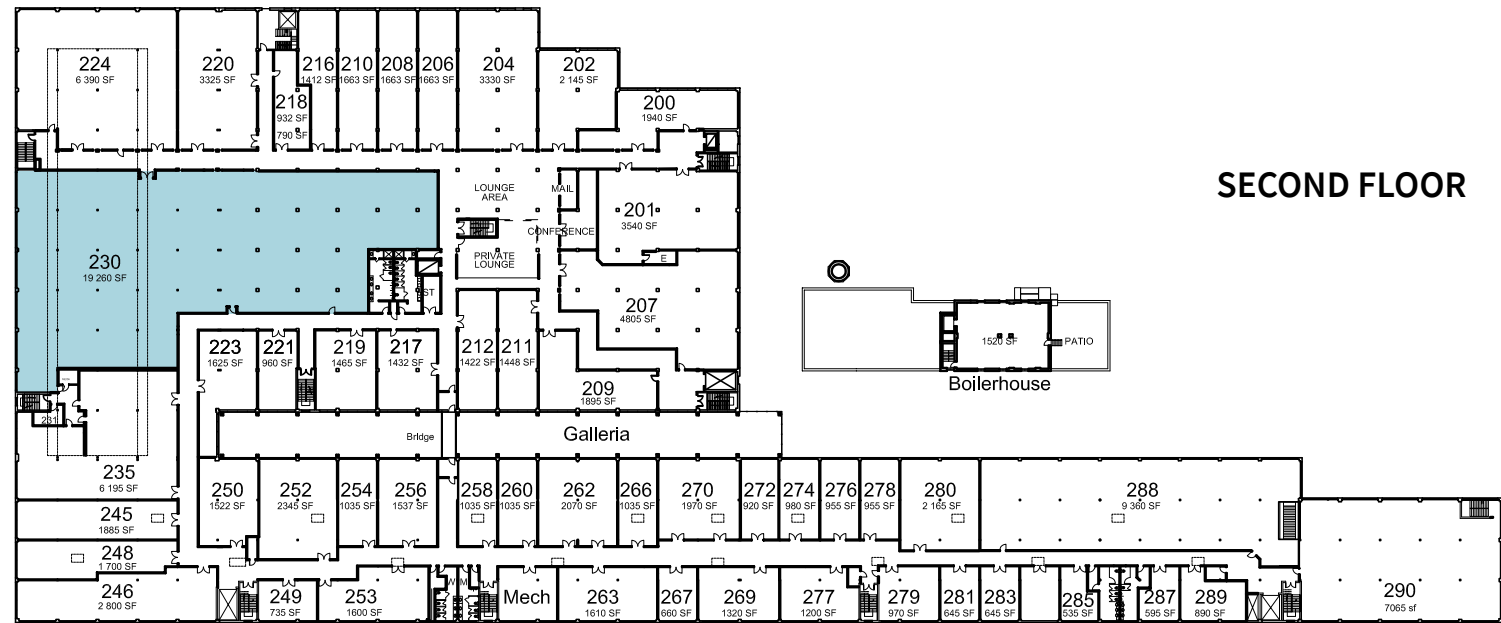
Size:	17,391 SF (split-level)
Available:	Immediately
Term:	5 - 10 Years
Asking Net Rent:	Please Contact with Listing Agents
Additional Rent:	\$21.75 PSF (EST. 2024)



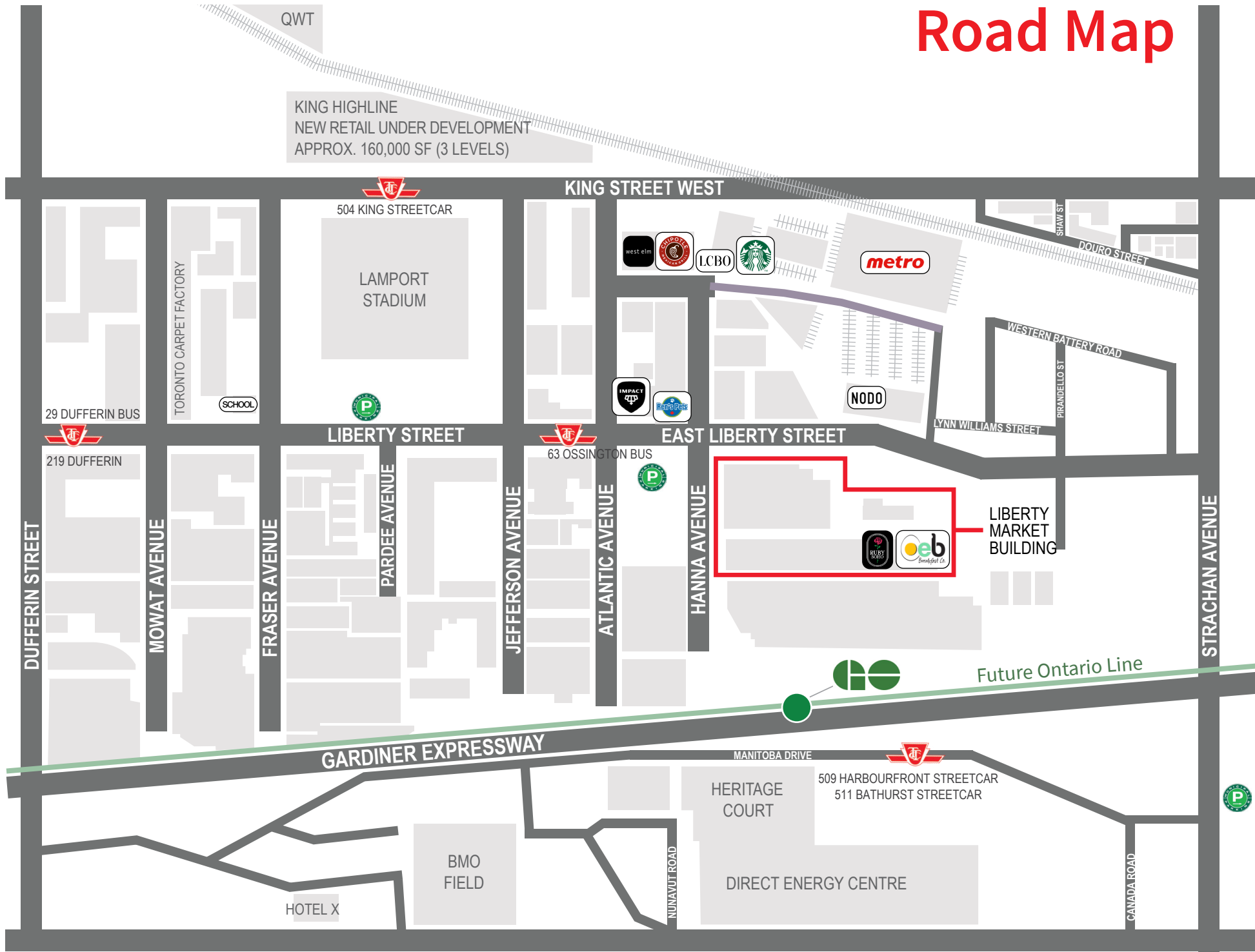
Site Map




★ Entrance point for Second Floor

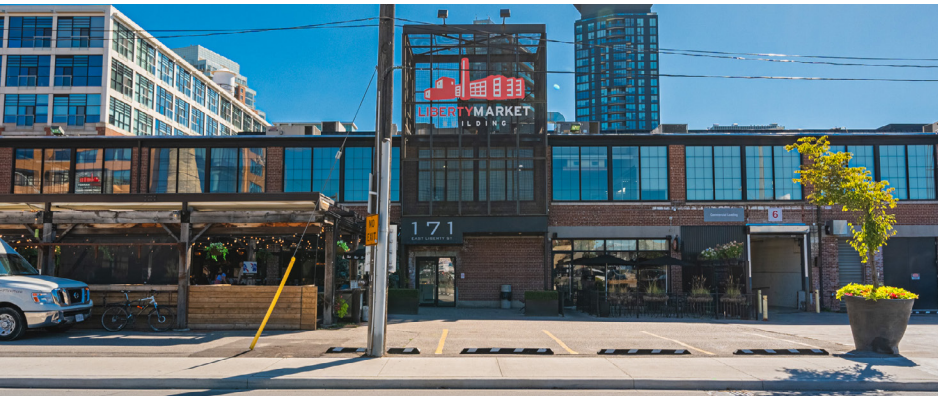


Road Map



Liberty Village

LIBERTY VILLAGE  Liberty Village is located between Strachan Avenue and Dufferin Street lining the Gardiner Expressway and King Street West. The neighbourhood is one of Toronto's fastest growing communities and has turned into a thriving mixed-use community that caters to the increasing number of residents in the area. With over two and a half million square feet of office space, the node has become a destination point for a variety of industries.



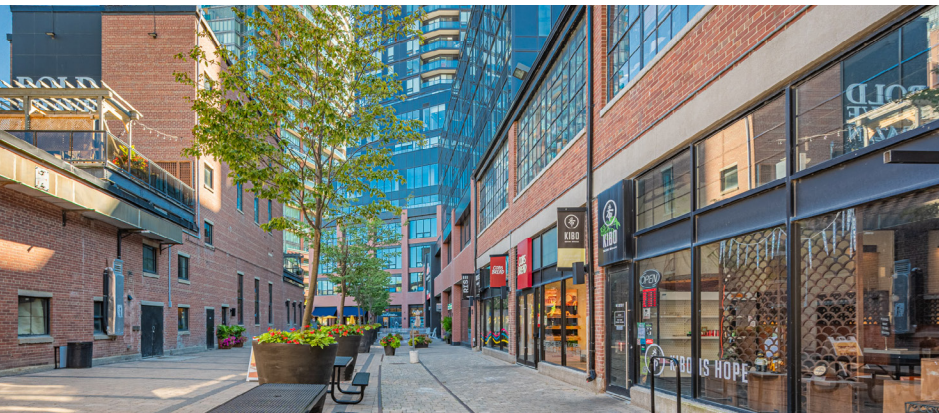
History

The neighbourhood's history mainly lies with its strong industrial ties. In 1858, Liberty Village became the site of Toronto's Industrial Exhibition that later moved south and is now known as the Canadian National Exhibition. In the 1880's the province built a prison where the inmates were put to work to generate profits for the government. In the years following, the heavily concentrated industrial area became munitions factories during the world wars to support the country's war efforts abroad.






Transportation

The Liberty Market Building enjoys public transit from the King Street West streetcar (504), Ossington bus line (63, 63A and 316), and the Exhibition Place GO Station for commuters. The Dufferin Street bus line (29, 29A, 29D and 329) is also easily accessible to those who work in Liberty Village.



Demographics

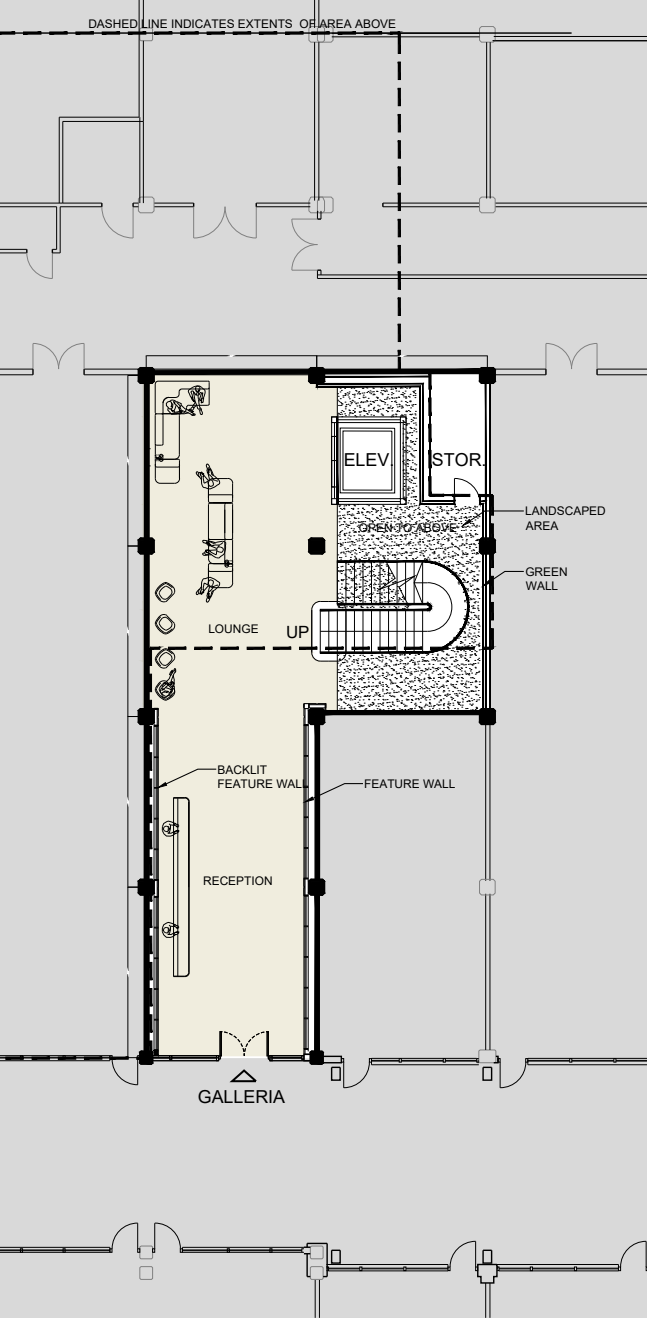
	43,847 POPULATION		97 WALK SCORE
	\$128,856 AVERAGE HH INCOME		100 TRANSIT SCORE

Within 1KM | Statistics Canada, 2021

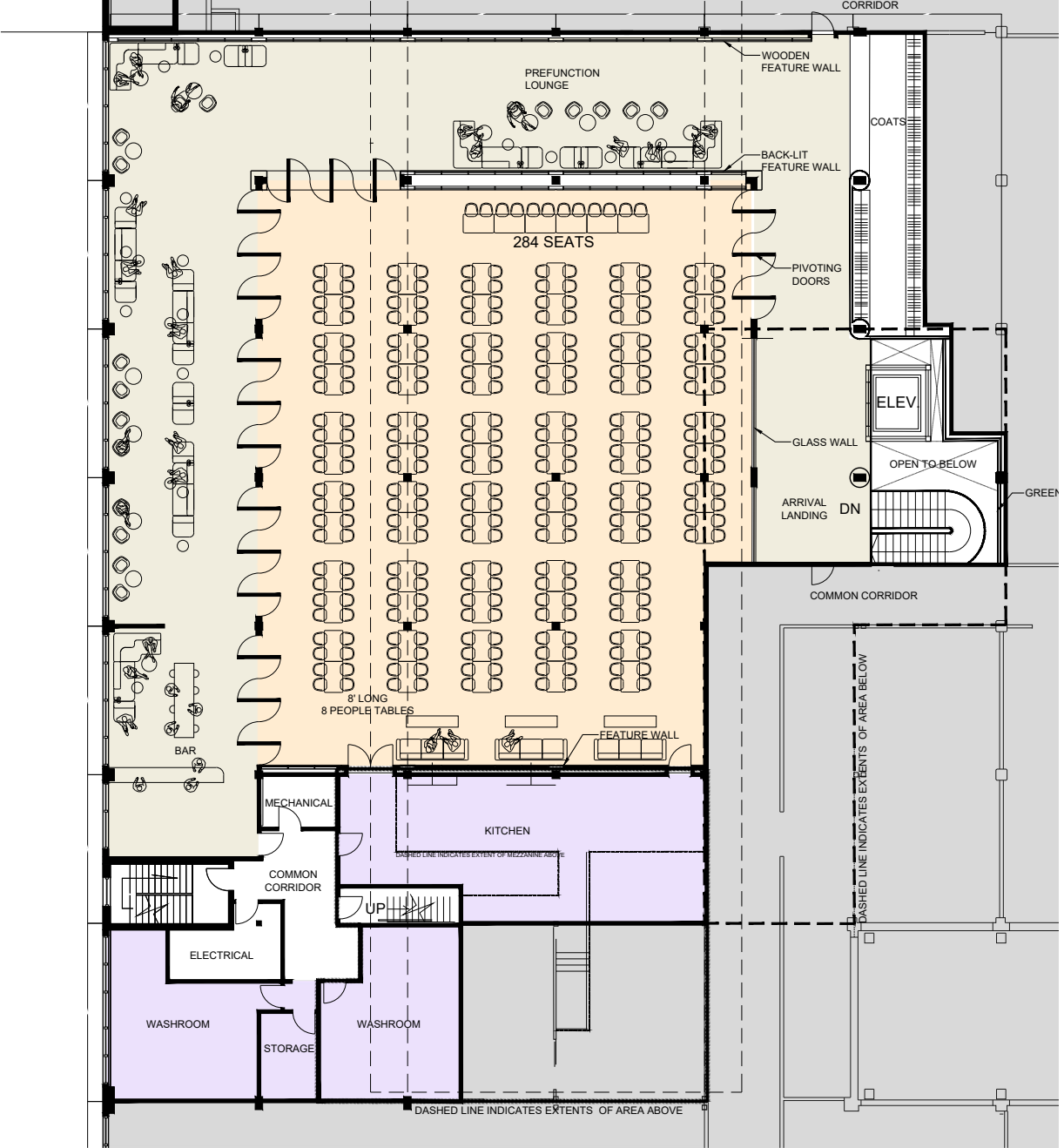




Floor Plan

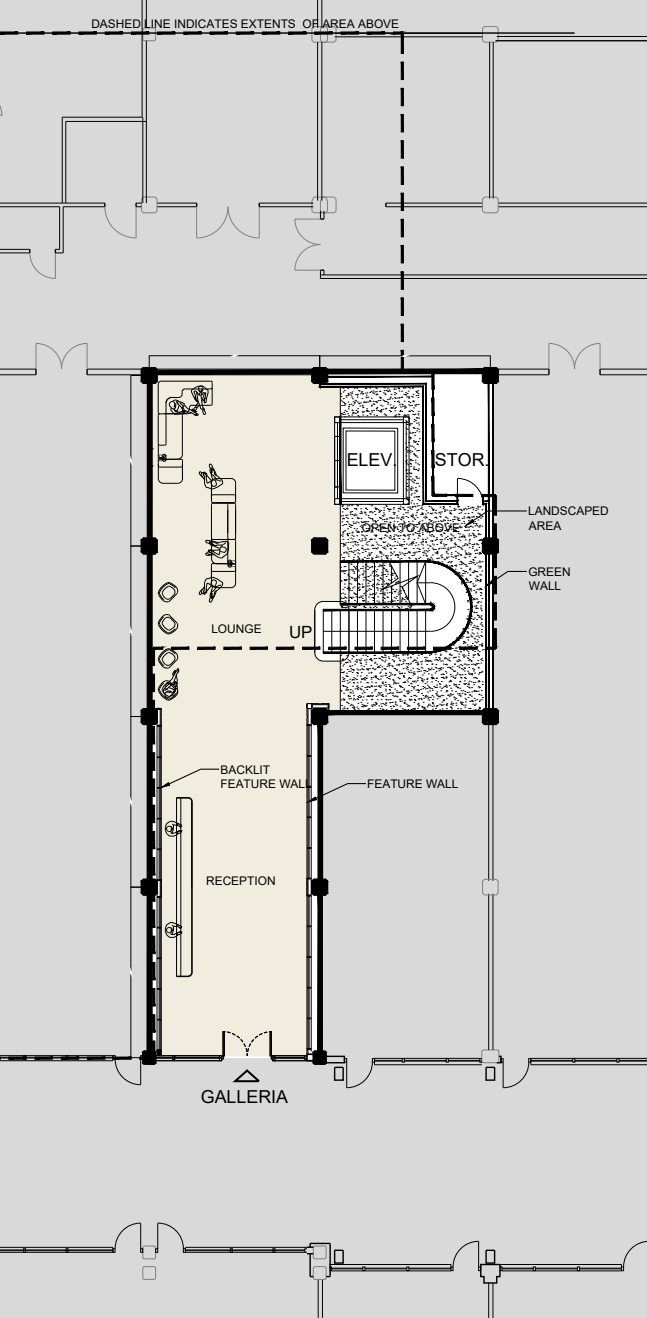


GROUND FLOOR

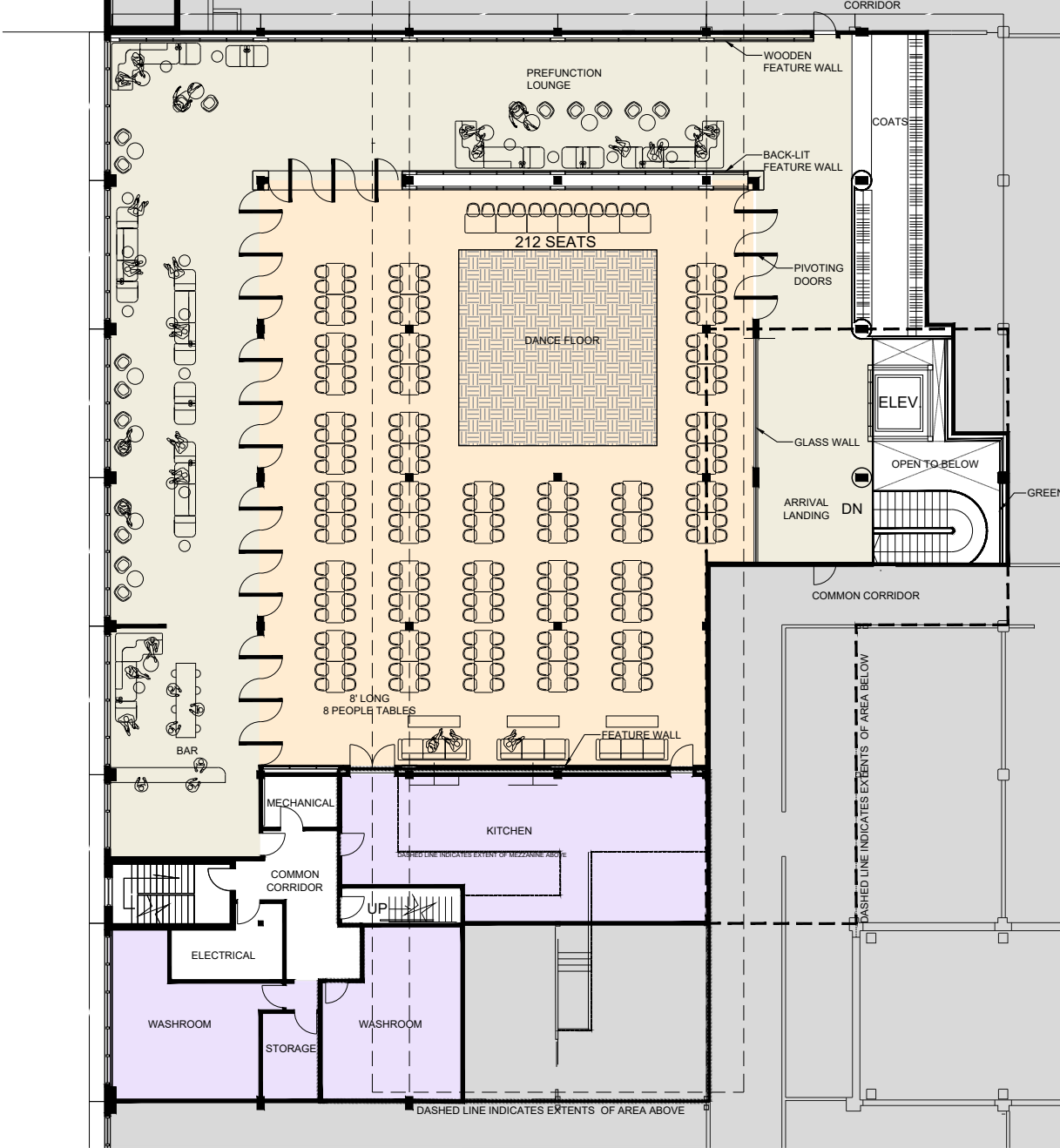


SECOND FLOOR

Floor Plan



GROUND FLOOR



SECOND FLOOR





Brandon Gorman**

Executive Vice President

+1 416 855 0907

Brandon.Gorman@jll.com

Graham Smith*

Executive Vice President

+1 416 855 0914

Graham.Smith@jll.com

Matthew Marshall*

Senior Sales Associate

+1 416 238 9925

Matthew.Marshall@jll.com