



For Sublease - 17,426 SF

# 175 Galaxy Blvd.

Toronto, ON

# Property Details



Suite: 202



Size: 17,426 SF



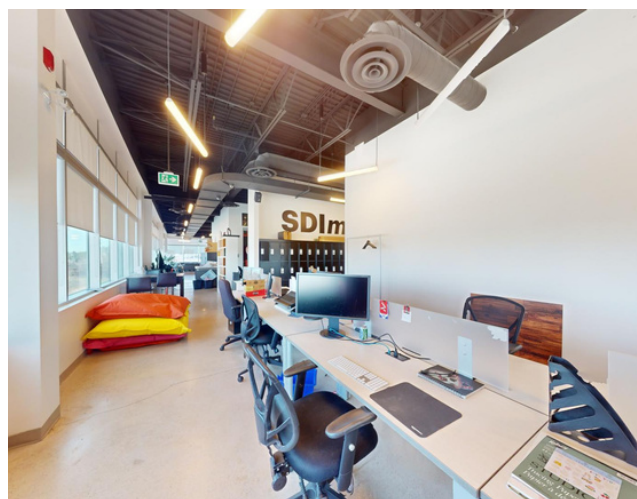
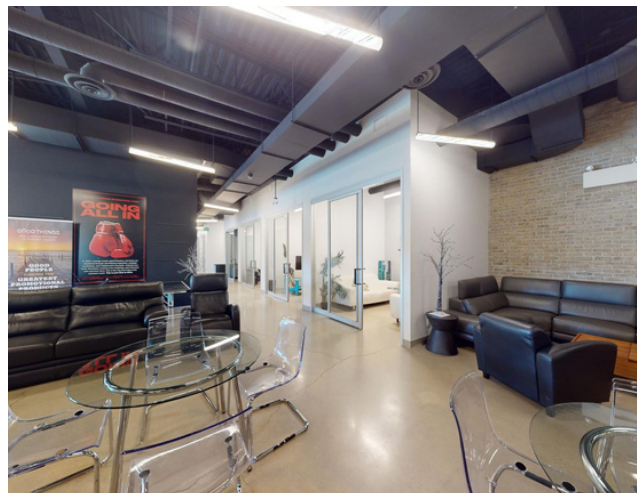
Availability: Immediate



Asking Net Rent: Contact Listing Agent



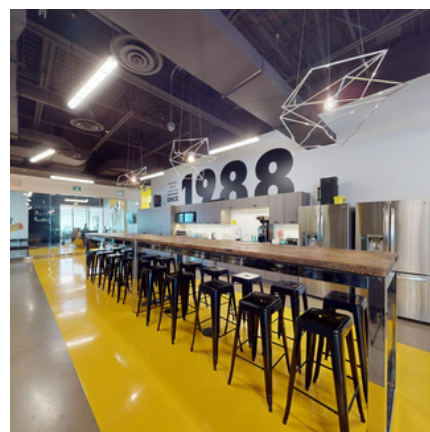
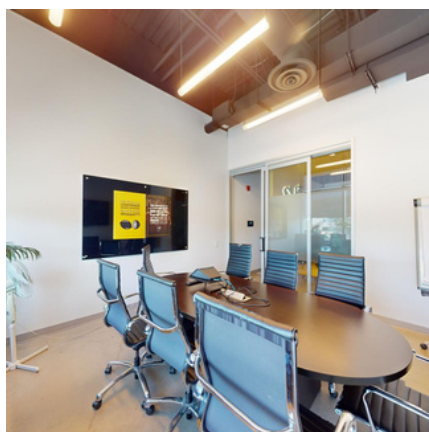
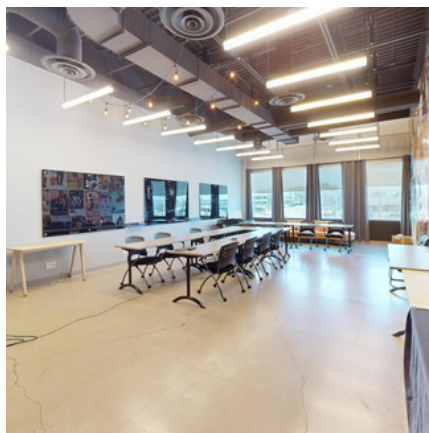
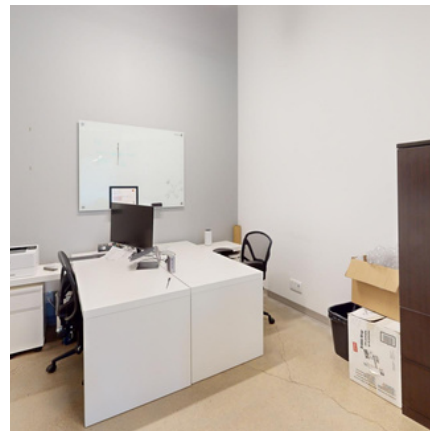
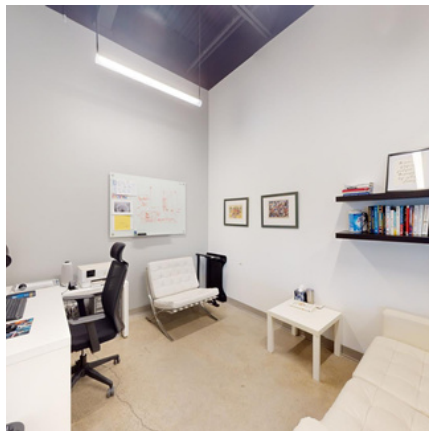
Additional Rent: \$12.50 PSF  
*\*Plus in-suite hydro*



# Property Highlights

- High-end sublease
- Furniture available
- Option for longer term direct with landlord
- Contiguous with an adjacent 15,546 SF suite





## Floor Plan





For more information, contact:

Graham Stirling\*  
Executive Vice President  
+1 647 964 4307  
Graham.Stirling@jll.com

Although information has been obtained from sources deemed reliable, neither Owner nor JLL makes any guarantees, warranties or representations, express or implied, as to the completeness or accuracy as to the information contained herein. Any projections, opinions, assumptions or estimates used are for example only. There may be differences between projected and actual results, and those differences may be material. The Property may be withdrawn without notice. Neither Owner nor JLL accepts any liability for any loss or damage suffered by any party resulting from reliance on this information. If the recipient of this information has signed a confidentiality agreement regarding this matter, this information is subject to the terms of that agreement. ©2024 Jones Lang LaSalle IP, Inc. All rights reserved. \*\*Broker. \*Sales Representative.