

# 1867 *Yonge* STREET



*Retail Available*  
Pre-Fixtured Restaurant



# Area OVERVIEW

1867 Yonge Street is located in Davisville Village, a bustling neighborhood that offers the perfect blend of urban convenience and small-town charm. Just steps from Davisville Subway Station, residents can make their commutes to the downtown core with ease. With its tree-lined streets, June Rowlands Park, and the Kay Gardner Beltline Trail, residents can enjoy a vibrant community for both walking and cycling. The area sees high foot and vehicular traffic, thanks to a diverse mix of national retailers such as The LCBO, Sobeys, Structube, and TD Canada Trust. Additionally, Davisville Village prides itself on supporting various local businesses, including Bread & Butter, Starving Artist, Poor Little Rich Girl, and Little Sister Indonesian Bar.

## DEMOGRAPHICS



Within 0.5 km Radius | Statistics Canada, 2024





Property DETAILS

Unit 100B:	2,328 SF
Available:	Immediately
Term Expiry:	July 31, 2027
Net Rent:	Please Contact Listing Agents
Additional Rent:	\$24.74 (est. 2024)

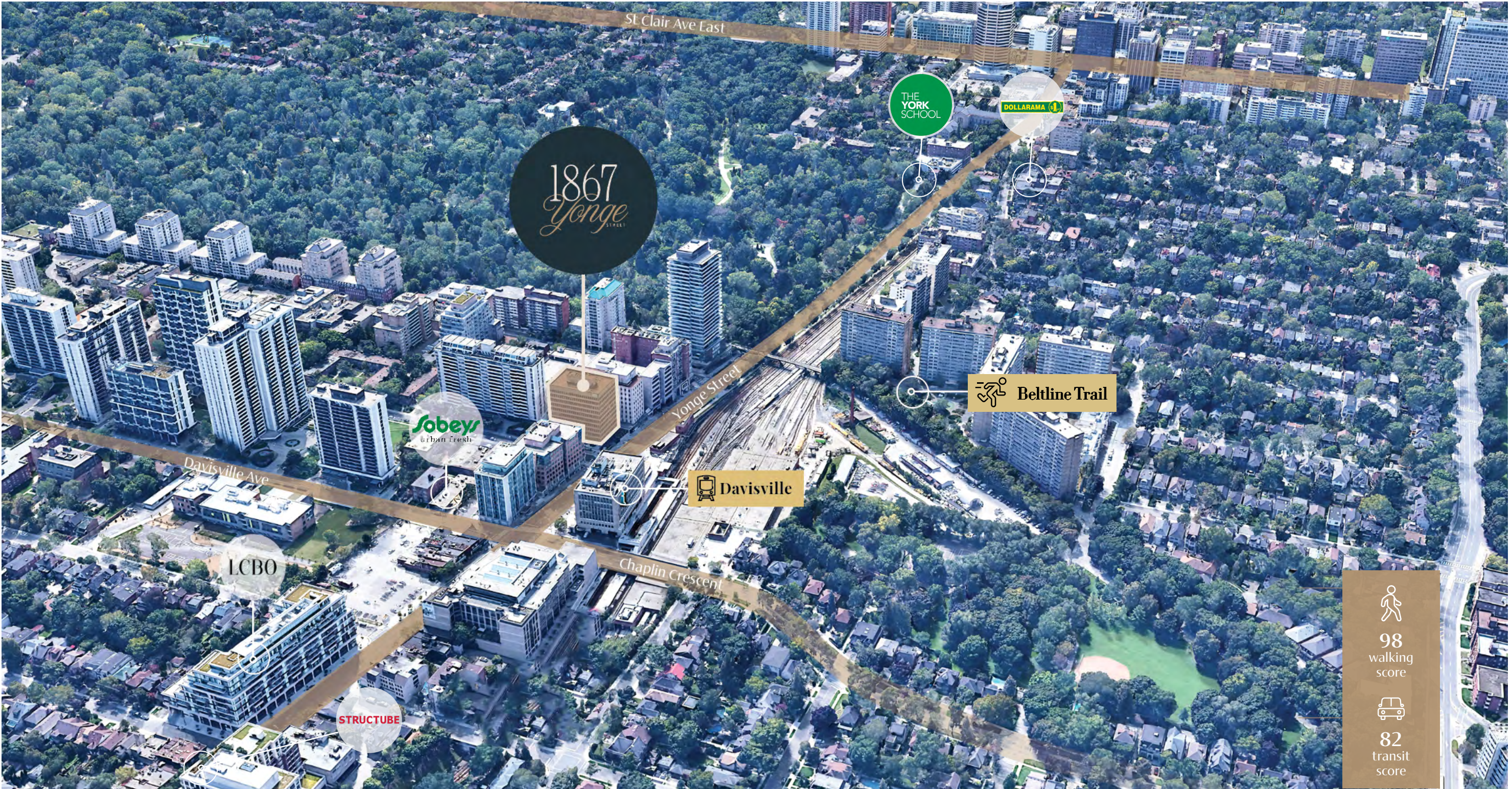
HIGHLIGHTS

- Retail available for sublease
- Pre-fixtured restaurant space
- Dedicated patio area
- Steps to Davisville Subway Station
- At the base of a 106,000 square foot office building
- Neighbouring tenancies include Cobs, LCBO, Sobey's Urban Fresh, Sotheby's International Realty, Structube, Tim Hortons





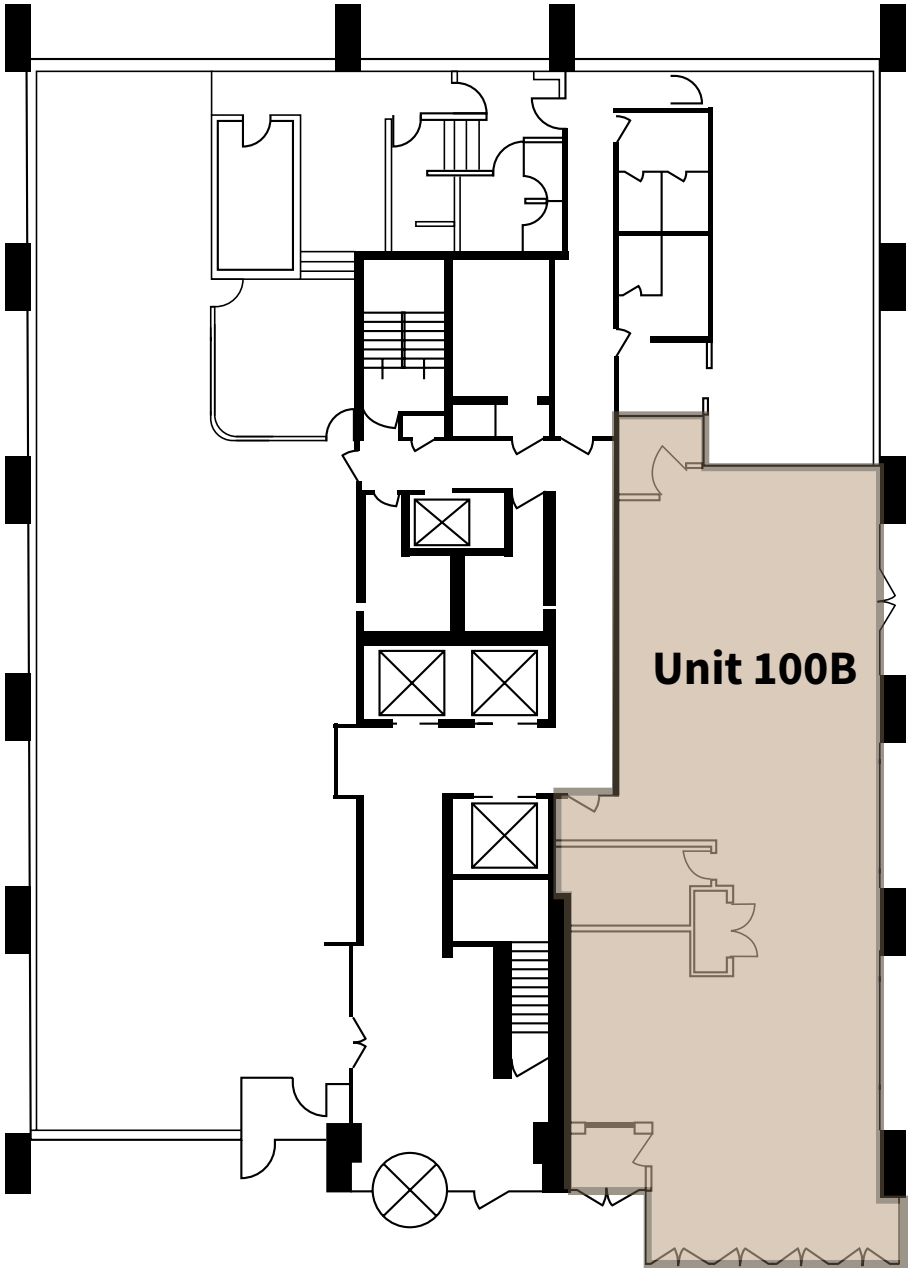
# Aerial OVERVIEW





Floor PLAN

2,328 SF





# 1867 *Yonge* STREET

*Retail Available*

Pre-Fixtured Restaurant

## JLL Retail Canada

### **Brandon Gorman\*\***

Executive Vice President  
+1 416 855 0907  
Brandon.Gorman@jll.com

### **Graham Smith\***

Executive Vice President  
+1 416 855 0914  
Graham.Smith@jll.com

### **Austin Jones\*\***

Associate Vice President  
+1 416 304 6050  
Austin.Jones@jll.com

### **Matthew Marshall\***

Senior Sales Associate  
+1 416 238 9925  
Matthew.Marshall@jll.com

### **Brett Varey\***

Sales Associate  
+1 416 304 6064  
Brett.Varey@jll.com

Although information has been obtained from sources deemed reliable, neither Owner nor JLL makes any guarantees, warranties or representations, express or implied, as to the completeness or accuracy as to the information contained herein. Any projections, opinions, assumptions or estimates used are for example only. There may be differences between projected and actual results, and those differences may be material. The Property may be withdrawn without notice. Neither Owner nor JLL accepts any liability for any loss or damage suffered by any party resulting from reliance on this information. If the recipient of this information has signed a confidentiality agreement regarding this matter, this information is subject to the terms of that agreement.