



 **JLL** SEE A BRIGHTER WAY

For sublease

#1 - 5905 11th Street SE, Calgary, AB
Second Floor Office Space

Property Highlights

- Move-in ready second-floor office space in Burns Industrial Park
- Open space concept with abundant meeting and storage space
- Two offices and board room
- Furniture included
- Numerous amenities in the immediate area, including: Deerfoot Meadows Shopping Centre, Calgary Famers' Market South, Chinook Centre, Crossroads Market.
- Two in-suite washrooms (one with shower)



Suite Details

Available Space: Suite 1 - 3,200 s.f.

- 2 offices
- 2 office bullpens
- Large conference room with kitchen
- 2 washrooms (1 with shower)

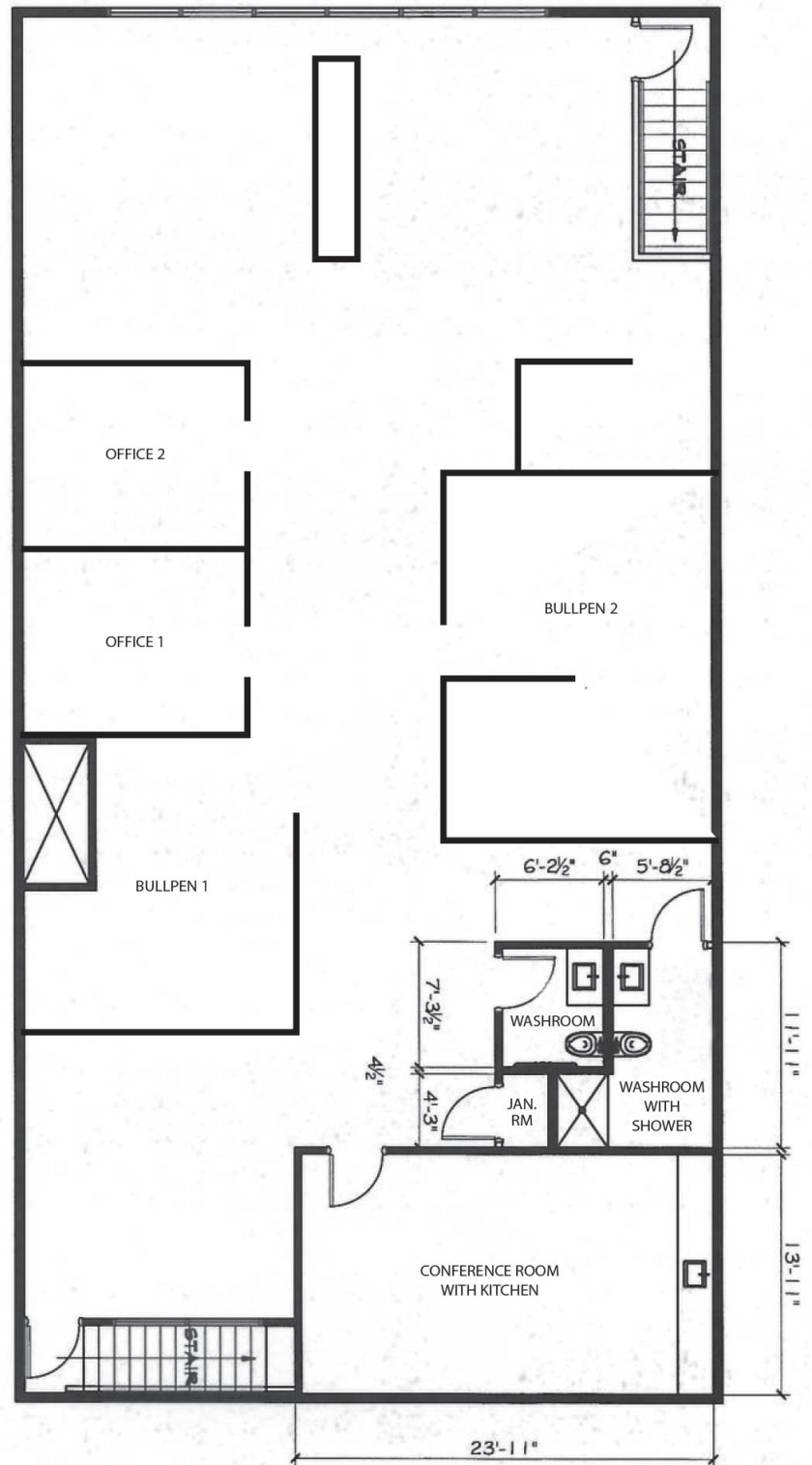
Sublandlord: School House Roasting

Gross Rent: ~~\$16.00 p.s.f.~~
\$14.00 p.s.f.

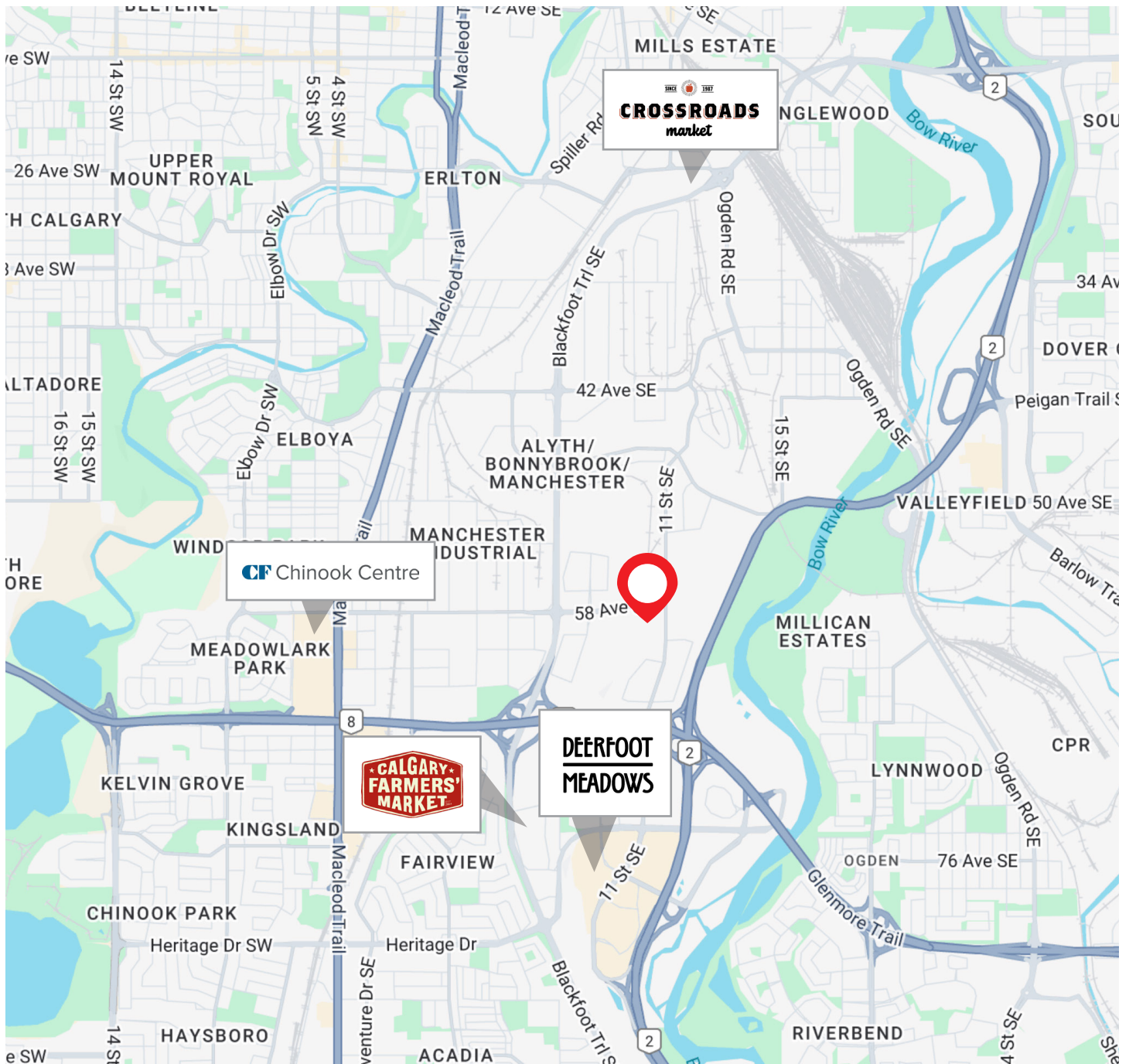
Availability: Immediately

Sublease Term: November 30, 2027

Parking: 5 random surface stalls,
free of charge



Location



For more information, please contact:

Kade Mayert

Associate

403 869 8332

kade.mayert@jll.com

Ahmad Rana

Associate

403 456 2205

ahmad.rana@jll.com

Cody Watson

Vice President

403 456 2215

cody.watson@jll.com



JLL Calgary Office

Suite 3900

Bankers Hall East

855-2nd Street SW

Calgary, AB, T2P 4K7

Although information has been obtained from sources deemed reliable, neither Owner nor JLL makes any guarantees, warranties or representations, express or implied, as to the completeness or accuracy as to the information contained herein. Any projections, opinions, assumptions or estimates used are for example only. There may be differences between projected and actual results, and those differences may be material. The Property may be withdrawn without notice. Neither Owner nor JLL accepts any liability for any loss or damage suffered by any party resulting from reliance on this information. If the recipient of this information has signed a confidentiality agreement regarding this matter, this information is subject to the terms of that agreement.

©2025 Jones Lang LaSalle IP, Inc. All rights reserved.