

For Lease

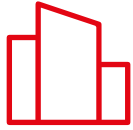
 **JLL** SEE A BRIGHTER WAY

51 Comstock Road, Scarborough



3,330 - 11,940 SF
Warehouse Space

51 Comstock Road / Scarborough



Well Maintained
Building



3,330 to 11,940
SF Available



Major Recent
Improvements



New Asphalt
Parking



Excellent Signage
Opportunity



51 Comstock Rd
(Warehouse Space
For Lease)

- 1.2 km to Eglinton LRT Station
- 1.7 km to TTC Subway Station
- 3.6 km to Go Station
- 4 km to Don Valley Parkway
- 6 km to Highway 401

Highly Functional Warehouse Space For Lease



Available Units

	Front Building	Rear Building						
		Unit 1	Unit 2	Unit 3	Unit 7	Unit 1+2	Unit 2+3	Unit 1+2+3
Size (SF)	5,320	4,360	3,330	4,250	5,480	7,690	7,580	11,940
Shipping*	1 TL & 1 DI	1 TL	1 TL	1 TL	1 TL & 1 DI	2 TL	2 TL	3 TL
Clear Height	11'	14'	14'	14'	14'	14'	14'	14'
TMI (psf)	\$5.00	\$5.00	\$5.00	\$5.00	\$5.00	\$5.00	\$5.00	\$5.00
Asking Rent (psf net)	\$14.95	\$13.95	\$13.95	\$13.95	\$13.95	\$13.00	\$13.00	\$13.00

*TL: Truck Level Door, DI: Drive-in Door

All Information To Be Verified By The Tenant.

Front Building



51 Comstock Road / Scarborough

Front Building



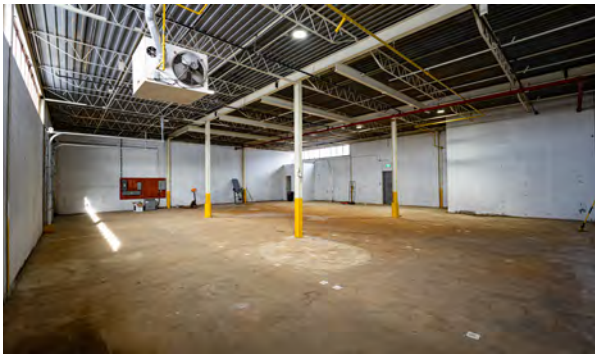
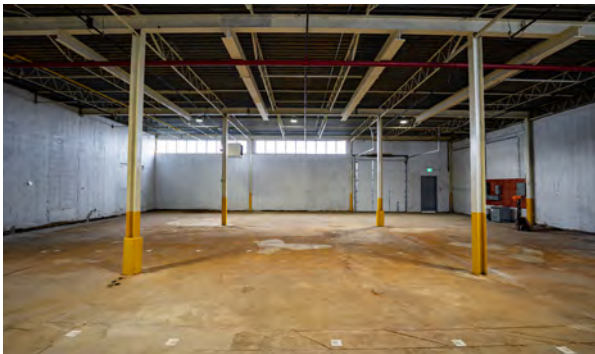
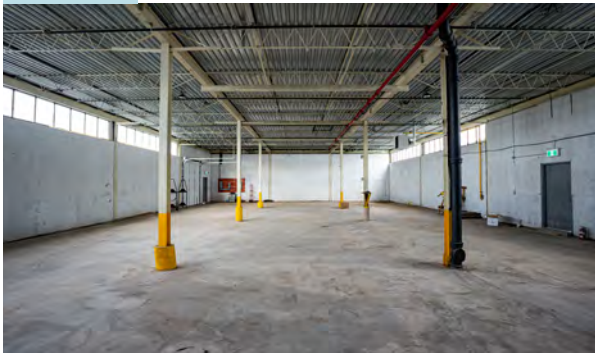
All Information To Be Verified By The Tenant.

Rear Building



Rear Building

Unit 1,2,3



Unit 7



51 Comstock Road / Scarborough

Location



Kern Ghotra

Vice President | Sales Representative

Kern.Ghotra@jll.com

+1 416 302 0171

Although information has been obtained from sources deemed reliable, neither Owner nor JLL makes any guarantees, warranties or representations, express or implied, as to the completeness or accuracy as to the information contained herein. Any projections, opinions, assumptions or estimates used are for example only. There may be differences between projected and actual results, and those differences may be material. The Property may be withdrawn without notice. Neither Owner nor JLL accepts any liability for any loss or damage suffered by any party resulting from reliance on this information. If the recipient of this information has signed a confidentiality agreement regarding this matter, this information is subject to the terms of that agreement. ©2025. Jones Lang LaSalle Brokerage, Inc. All rights reserved.