



For lease

Century Park Place
855 8th Avenue SW, Calgary, AB

 **JLL** SEE A BRIGHTER WAY

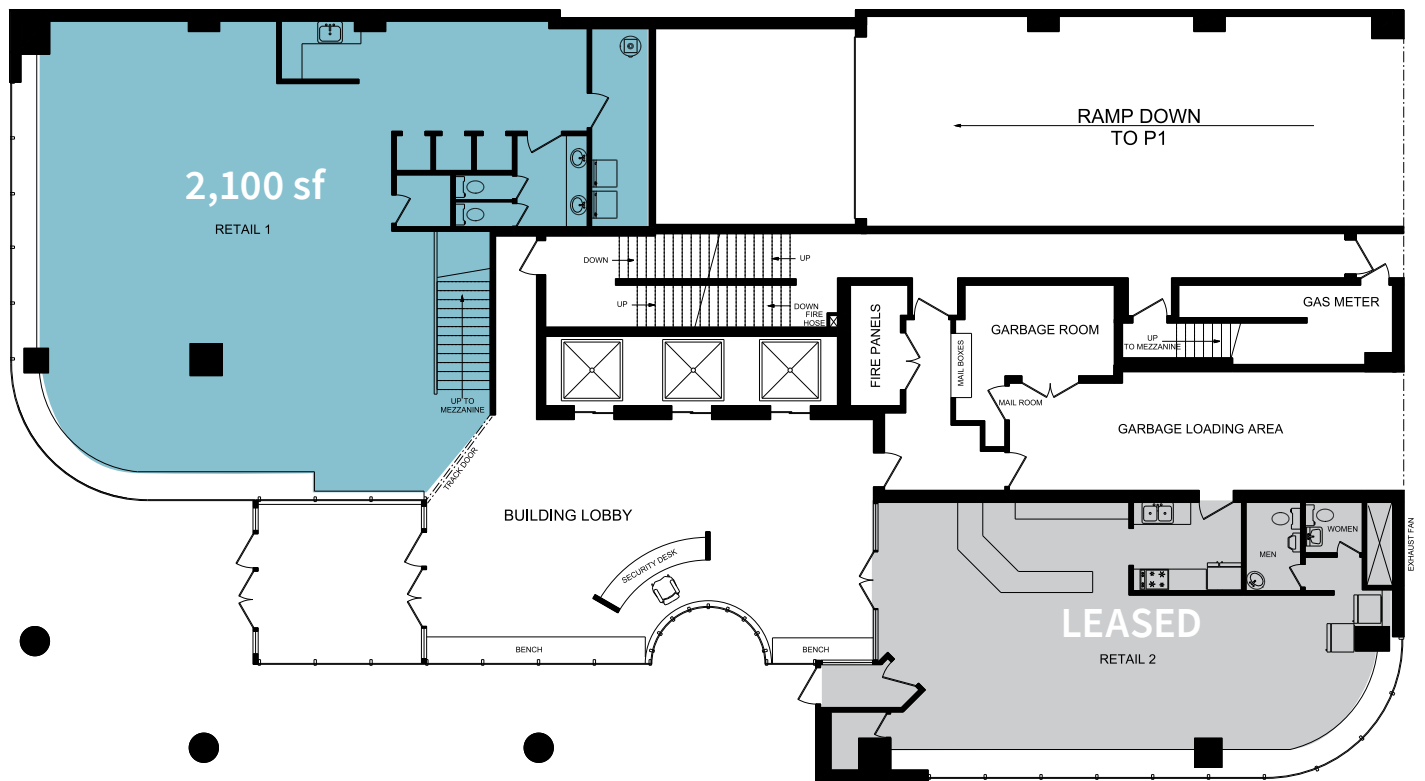
Property Highlights

- Variety of suite build-outs to suit any tenant
- Aggressive market lease rates
- Suites come with an abundance of natural light
- Underground parking
- On-site security
- Amenity rich area
- Walking distance to 7th Avenue LRT station

Available Suites	Retail Suite 101: 2,100 sf
	Office Suite 205: 905 sf Suite 300: 7,307 sf Suite 500: 7,523 sf Suite 700: 7,320 sf Suite 1010: 1,950 sf (Show Suite)
Available	Immediate
Term	Flexible
Asking Rate	Market lease rates
Operating Costs	\$16.36 (2025)
TIA	Negotiable
Parking	\$450.00 per stall per month 1 per 1,800 sf

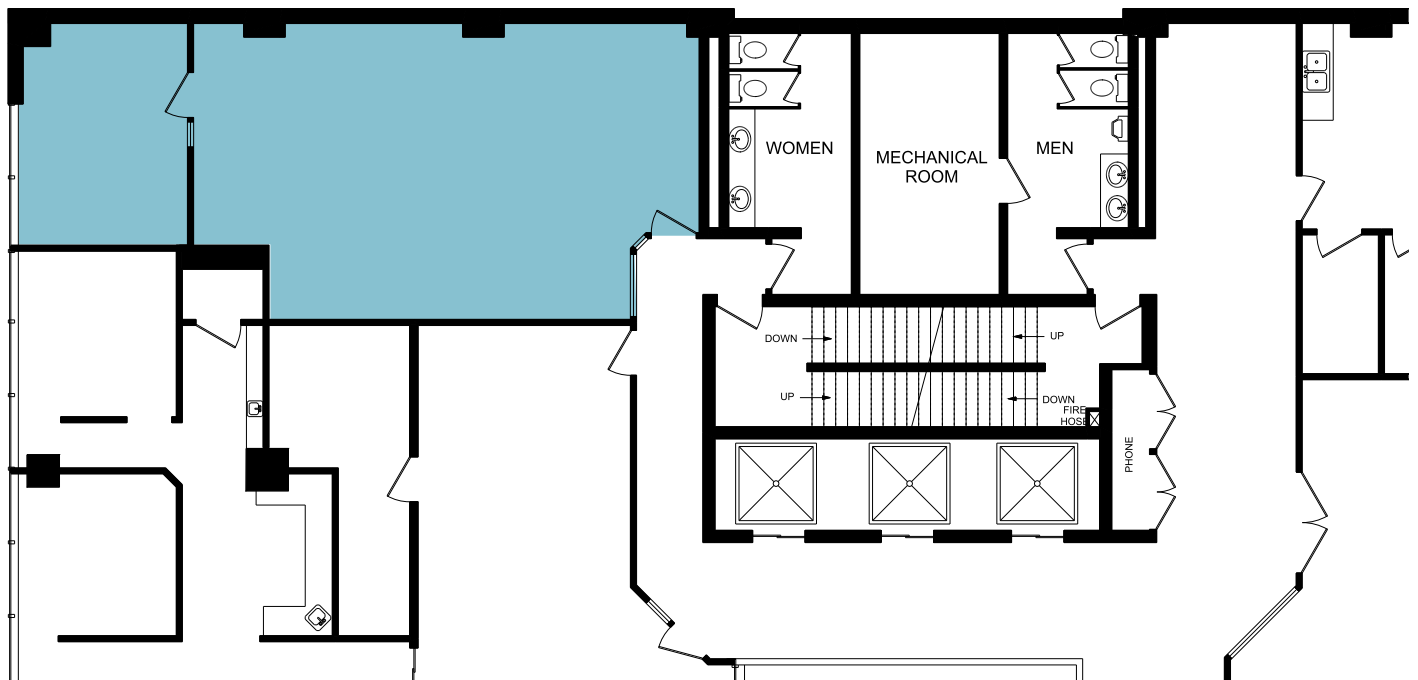


Main Floor | Retail Suites



Floor 2 | 905 sf

 View 3D Tour

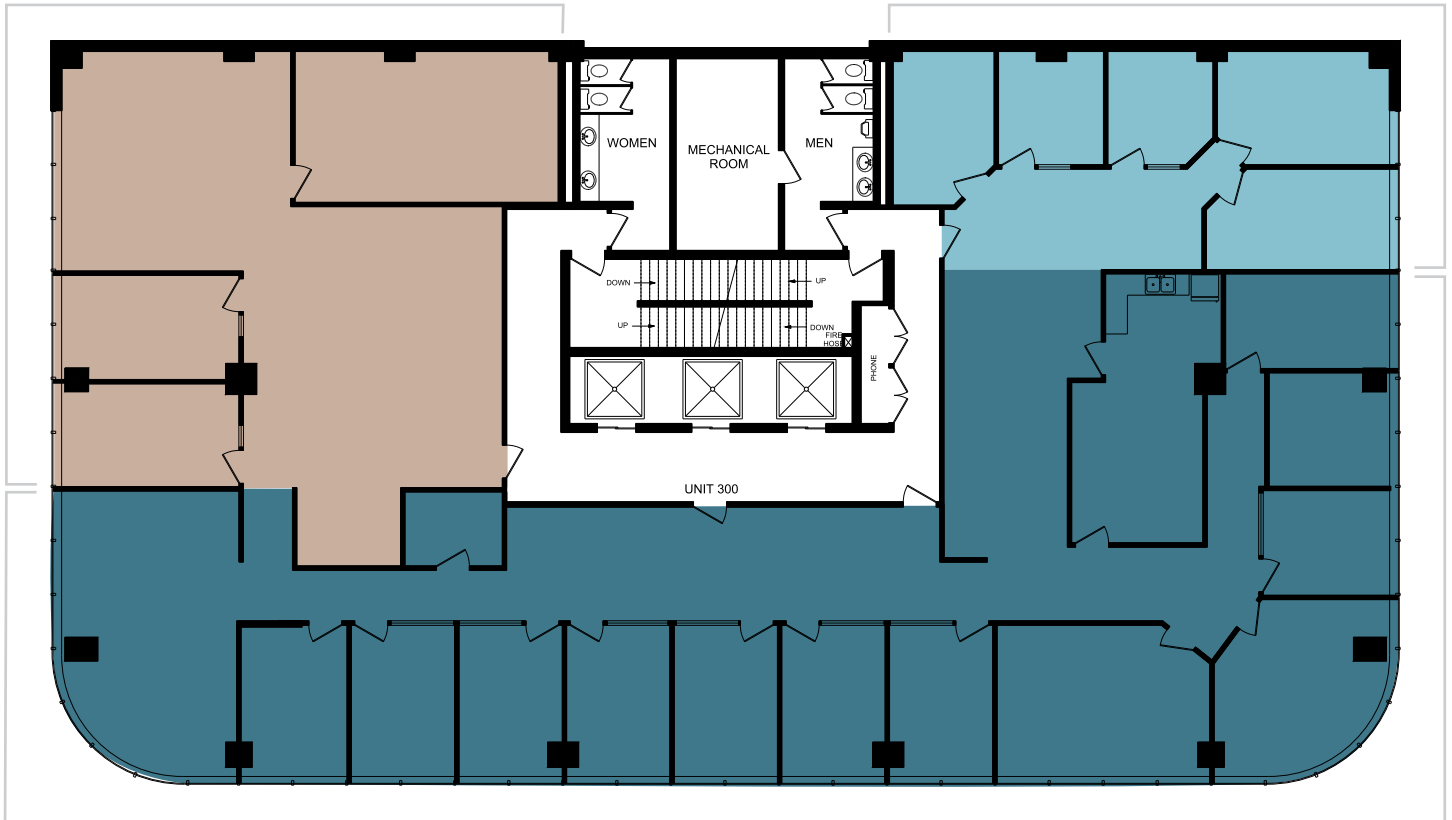


Floor 3 | 7,307 sf

 View 3D Tour

Demising Option A
1,461 sf

Demising Option C
731 sf



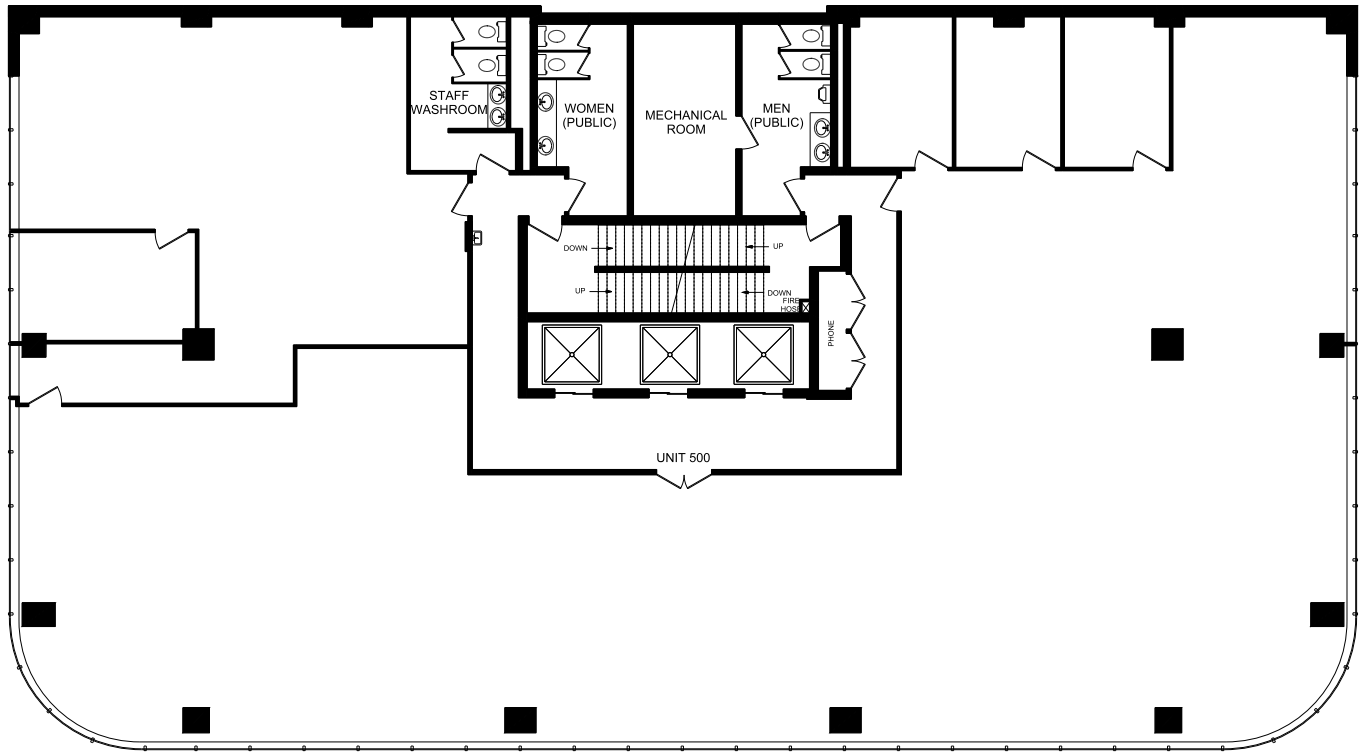
Demising Option B
5,115 sf



Floor 5 | 7,523 sf

 View 3D Tour

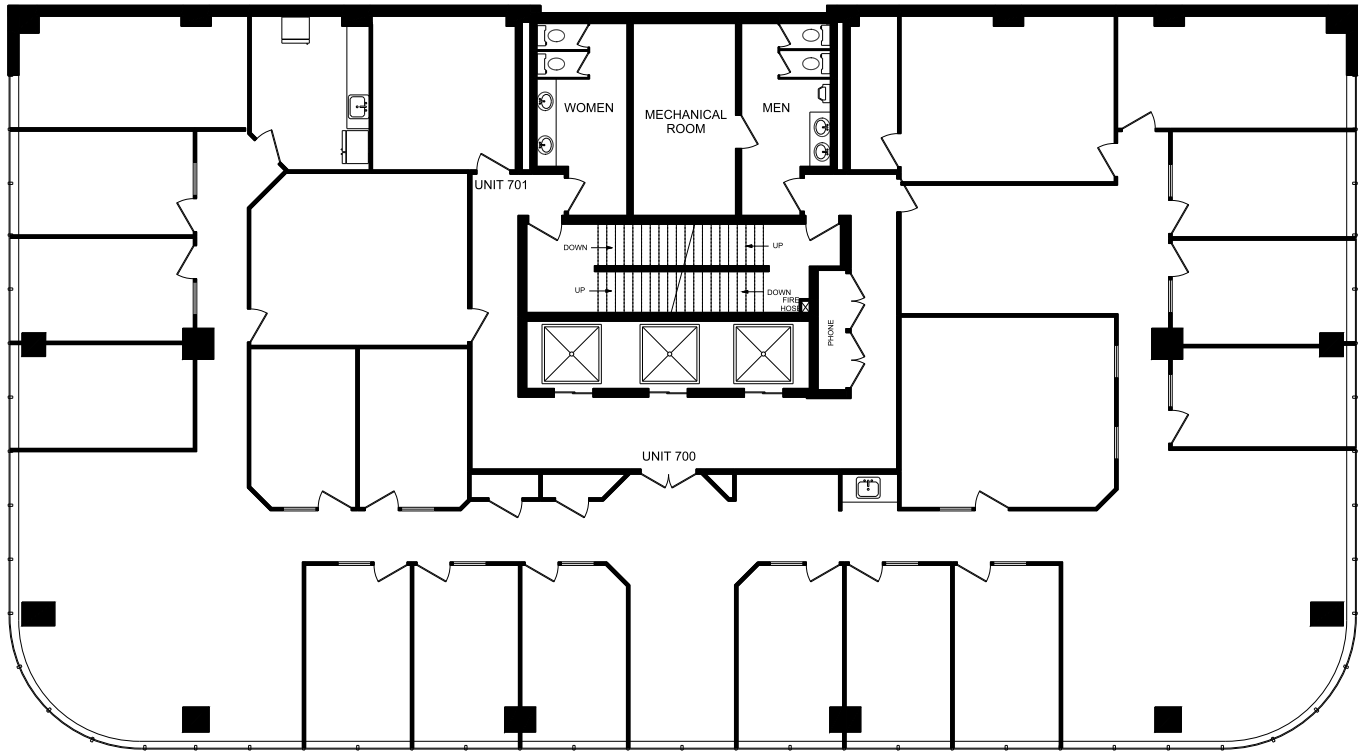
Demising Options Available



Floor 7 | 7,320sf

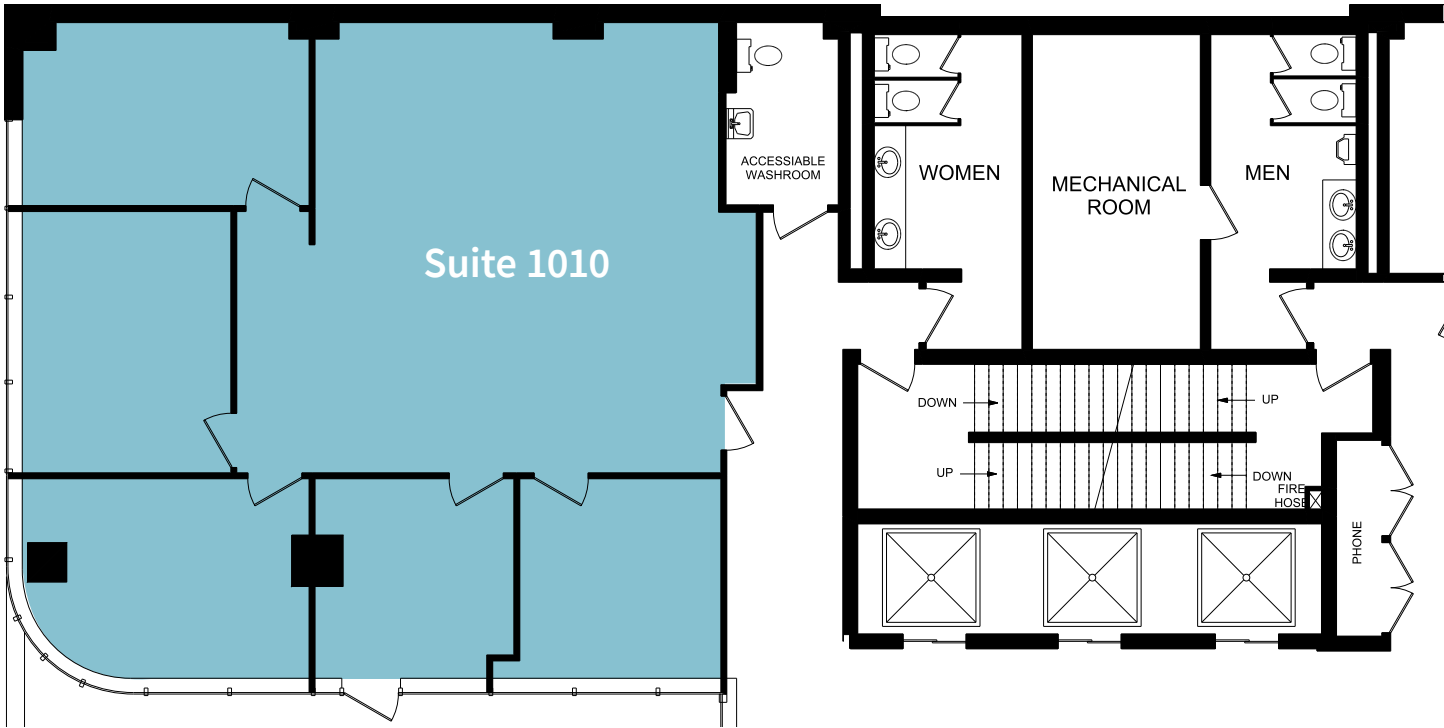
 View 3D Tour

Demising Options Available



Floor 10 | 1,950 sf

New Show Suite



OFFICE

Kara Dusseldorp

Associate Vice President

kara.dusseldorp@jll.com

403 456 2348

James McKenzie

Vice President

james.mckenzie@jll.com

403 456 8100

RETAIL

Ron Odagaki

Associate Vice President

ron.odagaki@jll.com

403 456 3245

Lauren Yanick

Associate

lauren.yanick@jll.com

403 456 3136

JLL Calgary

Suite 3900, 855 2nd Avenue SW

Calgary, AB

jll.ca