



62 MISSISSAGA STREET EAST

ORILLIA, ON
RETAIL FOR LEASE



PROPERTY DETAILS

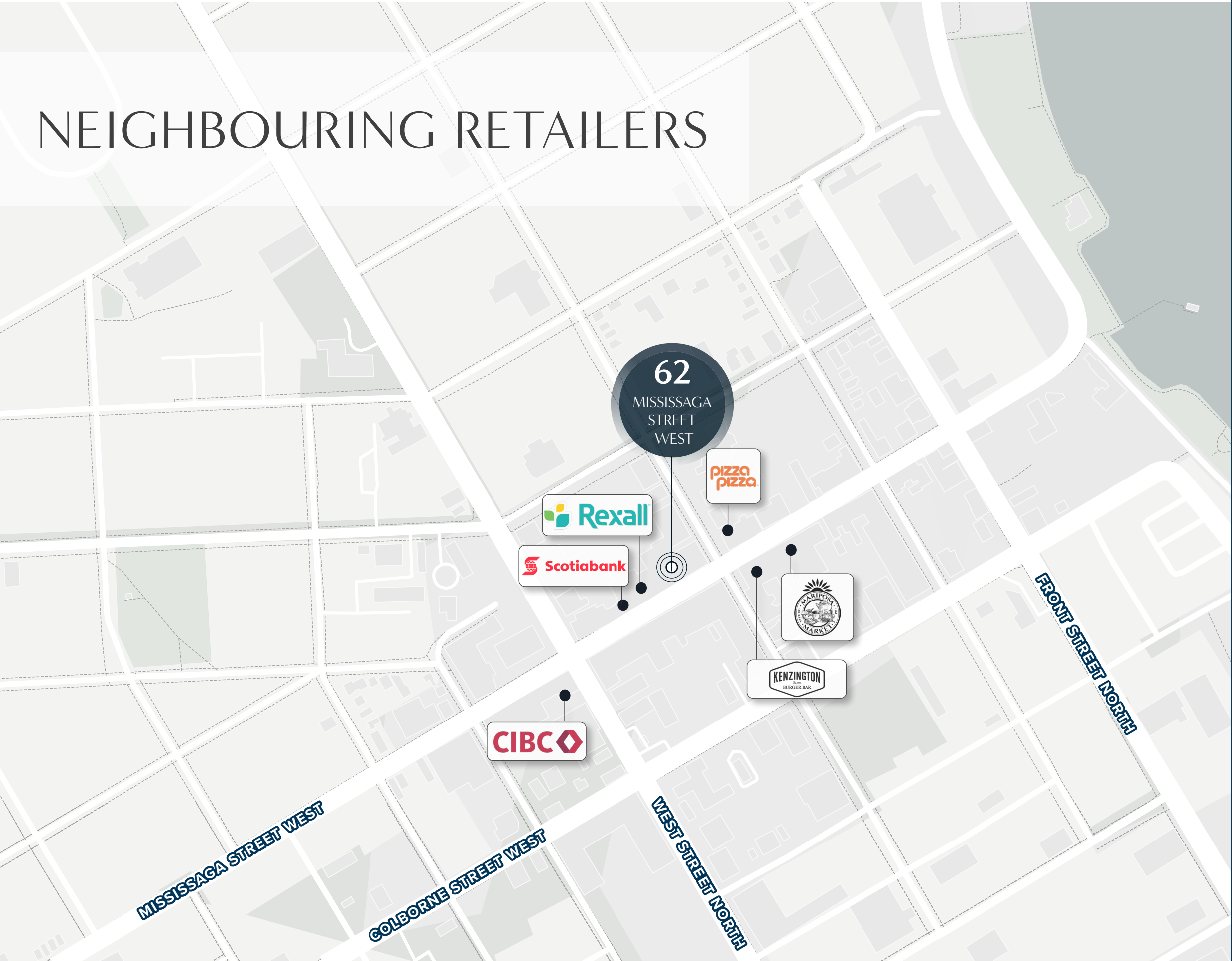
Ground Floor:	1,174 SF
Available:	Immediately
Net Rent:	\$18.00 PSF
Additional Rent:	\$6.00 (est. 2025)
Management Fee:	5% of Net Rent

HIGHLIGHTS

- Prime downtown location
- Excellent store-front opportunity abutting Rexall
- Full basement space included
- Ample streetfront parking in front of the premises
- Possible uses include: medical, healthy & beauty, financial & administrative services, and retail



NEIGHBOURING RETAILERS



 5,768
Population

 11,403
Daytime Population

 2,946
Total Households

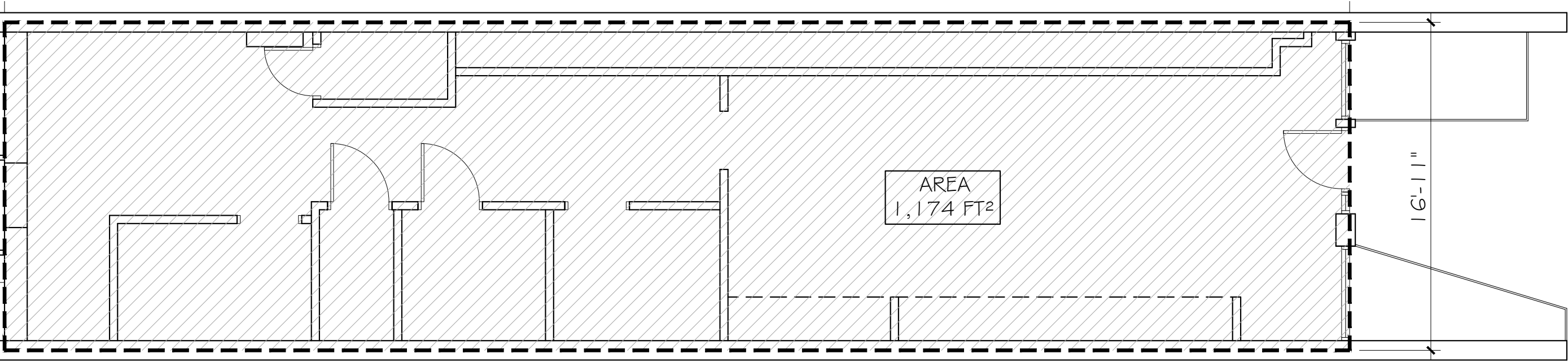
 \$77,006
Average HH Income

 6.2%
Growth Rate
Previous 5 Years

 44.3
Median Age

Within 1km Radius. Statistics Canada, 2025.

FLOOR PLAN



Mississaga Street East

1,174 SF
GROUND LEVEL



Retail for lease

+1 416 391 6960 Russell Godwin* | Russell.Godwin@jll.com

62 MISSISSAGA STREET EAST ORILLIA, ON RETAIL FOR LEASE

RUSSELL GODWIN*

Senior Vice President

+1 416 391 6960

Russell.Godwin@jll.com



Although information has been obtained from sources deemed reliable, neither Owner nor JLL makes any guarantees, warranties or representations, express or implied, as to the completeness or accuracy as to the information contained herein. Any projections, opinions, assumptions or estimates used are for example only. There may be differences between projected and actual results, and those differences may be material. The Property may be withdrawn without notice. Neither Owner nor JLL accepts any liability for any loss or damage suffered by any party resulting from reliance on this information. If the recipient of this information has signed a confidentiality agreement regarding this matter, this information is subject to the terms of that agreement. ©2024 Jones Lang LaSalle IP, Inc. All rights reserved. **Broker. *Sales Representative.