

1066

YONGE STREET

Retail

FOR LEASE



1066 YONGE STREET

Property Details

GROUND FLOOR:	1,100 SF
TERM:	5-10 years
AVAILABLE:	Immediately
NET RENT:	Please Contact Listing Agents
ADDITIONAL RENT:	\$27.55 PSF (est. 2025)
ZONING:	CR 2.5

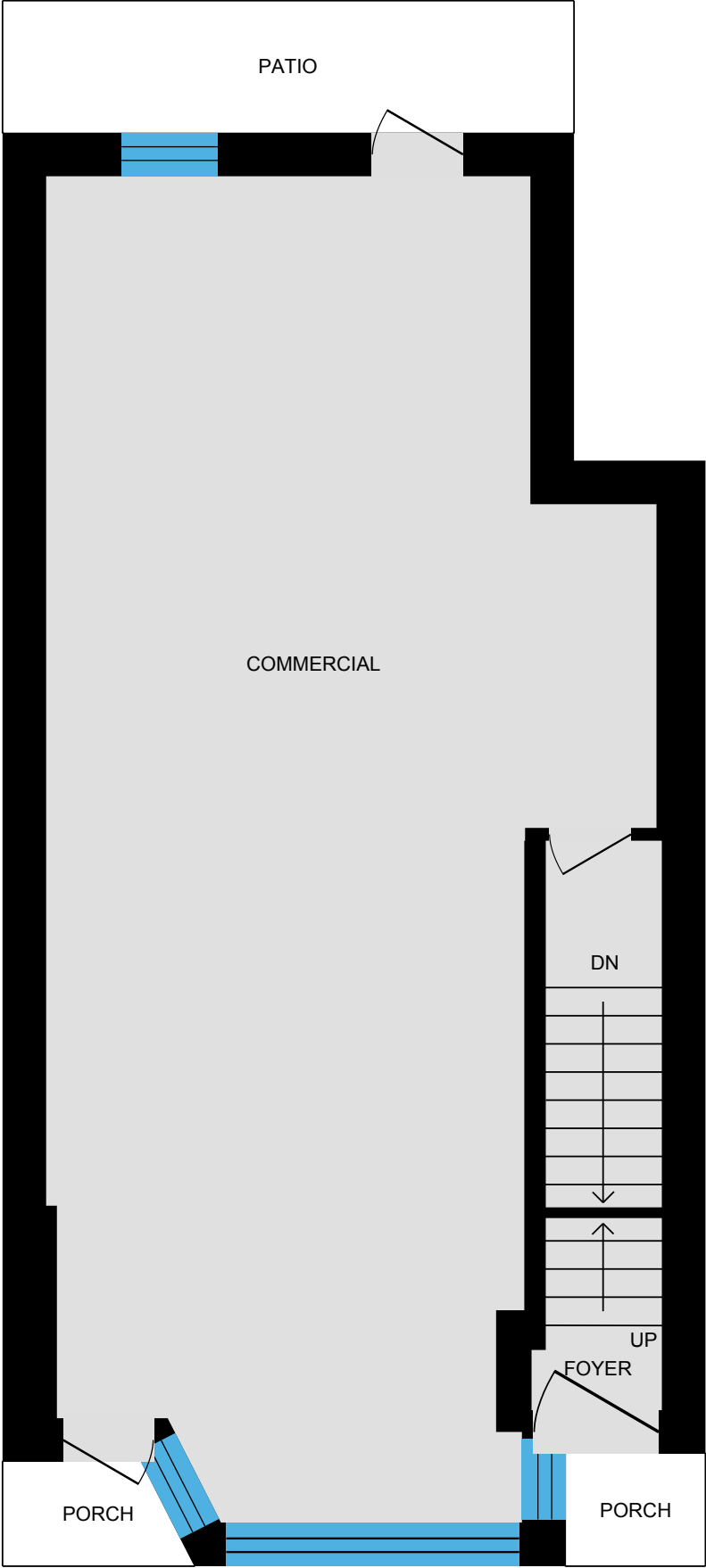
HIGHLIGHTS

- Right-sized retail space in the heart of Summerhill
- Great frontage and signage opportunity on the west side of Yonge Street
- 1,000 SF of second floor space also available
- Steps to Rosedale Subway Station
- Highly desirable retail node for a variety of different retail use



Floor Plan

GROUND FLOOR
1,100 SF



YONGE STREET



Demographics



33,704
Population



56,232
Daytime Population



18,076
Total Households



\$334,241
Average Household
Income



21.7%
Growth Rate
Next 5 Years



42.6
Median Age

Within 1 km Radius | Environics,, 2025



RETAIL FOR LEASE



1066
YONGE STREET

Retail
FOR LEASE

JLL RETAIL CANADA

BRANDON GORMAN**

Executive Vice President
+1 416 855 0907
Brandon.Gorman@jll.com

GRAHAM SMITH*

Executive Vice President
+1 416 855 0914
Graham.Smith@jll.com

MATTHEW MARSHALL*

Associate Vice President
+1 416 238 9925
Matthew.Marshall@jll.com

Although information has been obtained from sources deemed reliable, neither Owner nor JLL makes any guarantees, warranties or representations, express or implied, as to the completeness or accuracy as to the information contained herein. Any projections, opinions, assumptions or estimates used are for example only. There may be differences between projected and actual results, and those differences may be material. The Property may be withdrawn without notice. Neither Owner nor JLL accepts any liability for any loss or damage suffered by any party resulting from reliance on this information. If the recipient of this information has signed a confidentiality agreement regarding this matter, this information is subject to the terms of that agreement. ©2025 Jones Lang LaSalle IP, Inc. All rights reserved. **Broker. *Sales Representative.