



 **JLL** SEE A BRIGHTER WAY

FLEX OFFICE SPACE FOR SUBLEASE

210 COLONNADE ROAD

210 COLONNADE ROAD

Ottawa, ON.

Size	6,709 SF Suite 300
Availability	Immediately
Expiry	March 30, 2026
Net Rent	Contact Listing Agent
Additional Rent	\$7.86 PSF (2025 est)
Parking	Ample On-site Parking



BUILDING OVERVIEW

210 Colonnade Road is located in the southwest end of Ottawa and benefits from exceptional access to the city's top transportation roads. Tenants can take advantage of immediate access to public transit steps away, and nearby amenities within close driving and walking distance: Bâton Rouge Steakhouse & Bar, Cora, Panera Bread, Five Guys, and Starbucks.

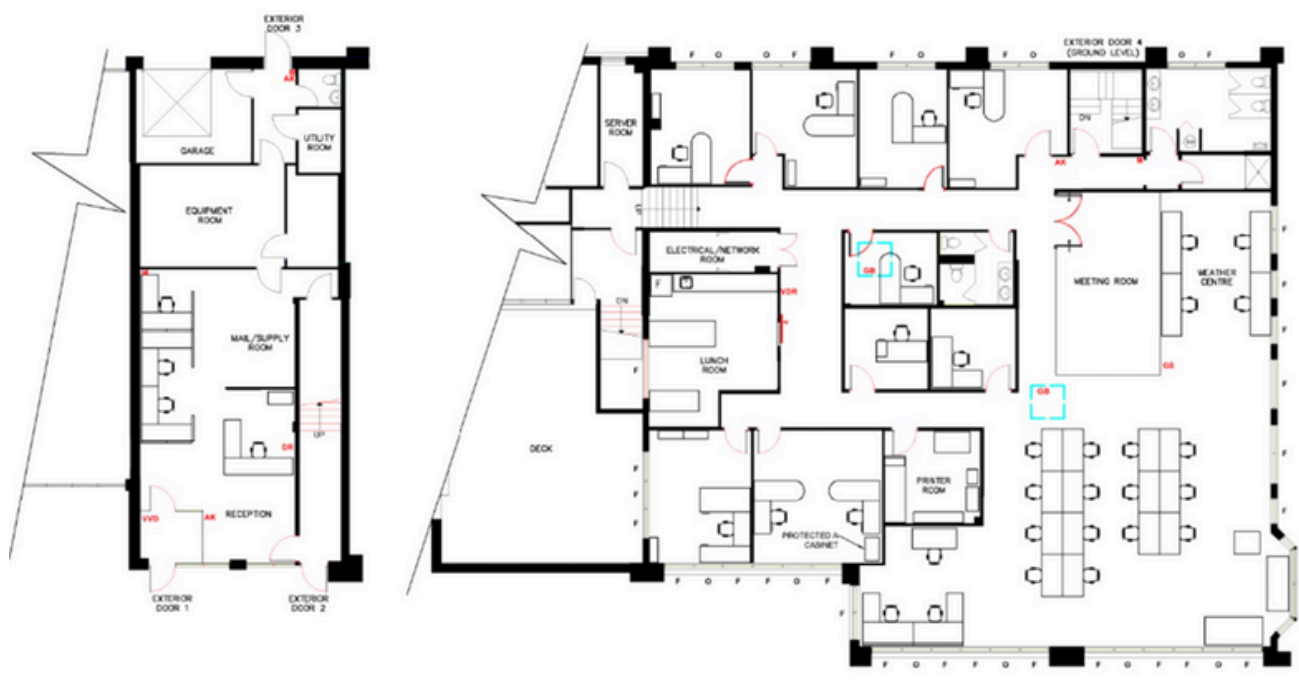


Floorplan

Suite 300 | 6,709 SF



VIRTUAL TOUR



SPACE OVERVIEW

6,709 sf of flex office space spread out throughout two floors that includes a reception area, mail and supply room, equipment room, and a garage with a grade level overhead door on the main floor. The second floor includes a kitchen area, IT room, printer room, 8 enclosed offices, a boardroom, shower room, and open collaboration space. There is also a unique shared outdoor patio on the 2nd floor.

Office Space Photos

Suite 300 | 6,709 PSF



VIRTUAL TOUR



JLL

Steven Powell
Vice President
Steven.Powell@jll.com
C: 613-656-0150

Philippe Erdmann
Sales Associate
Philippe.Erdmann@jll.com
C: 613-400-6173